



Rainbow Reflections

BULK RATE
U.S. POSTAGE
PAID
PERMIT #5377

Lutheran Outdoor Ministries of the Rockies
Rainbow Trail Lutheran Camp
107 South Ninth Street, Suite B
Canon City, Colorado 81212

Volume 36, Number 2 Spring 2024

Rainbow Trail is operated and maintained under authority of a USDA Forest Service Special Use Permit. Rainbow Trail is located in the San Isabel National Forest, USDA.

Gear Up!

New Backpacks Transform Compass Points Program

Our Compass Points backpacking program has been one of the core programs at Rainbow Trail for well over 45 years. Initiated in the late 1970's, this program helped our campers experience God's incredible creation in a very different and unique way - to have everything you need on your back as you traverse through some of the most majestic mountains anywhere. To encounter God while in this pristine wilderness and to spend time in awe and in prayer has been life-changing for thousands of participants. This program has grown over recent years and we have served as many as 213 campers in a summer. Compass Points had the capacity to serve more but we really didn't have the right equipment to do that.

Anyone that's been backpacking before knows just how vital the quality of your gear can be to the

experience you have on trail.

Reliability and comfort are two of the most important factors when it comes to choosing a pack. Rainbow Trail has been using external frame packs for Compass Points for most of the life of the program. Internal frame packs are really the way to go, and because of a very generous gift from Bill and Charlotte Dausses, Compass Points equipment just took



a giant leap forward. This spring, Bill and Charlotte donated 45 brand new Osprey backpacks and rain covers to our Compass Points program! These packs will enhance our program exponentially by helping campers feel comfortable and will prevent equipment malfunctions while out on trail. Not only is it a blessing to have new gear, but these packs are specifically designed by

Osprey for outdoor programs and repeated use by being manufactured with extra durable fabric and stitching. Osprey also has a lifetime warranty on their products so these packs will continue to serve the RTALC community and campers for years to come.

Bill was a camper here in the late 1950's, served on summer staff in the 1960's, and has a great love for this ministry. Bill did a lot of hiking at North Taylor and Lake of the Clouds back when he was on staff. Bill and Charlotte have served as camp grandparents since 2017 and are a huge part of the Rainbow Trail family.

A huge thank you to Bill and Charlotte for helping transform our Compass Points program and equipping RTALC to serve through this program for many years to come!

Who Wants To Join The Summer Staff Dream Team?

We Still Have Summer Positions Open!

We still have summer staff positions open! Are you or someone you know still looking for summer plans or even a ministry to work for? We're seeking college students who are passionate about working with children and interested in spending their summer in the beautiful Colorado mountains.

A few positions are still open, including camp hand, male counselor, Nurse, and Bridging Border Director. As a Nurse, you will help maintain a healthy culture and setting for campers and staff. You have the opportunity to change lives and connect with people everyday. The camp nurse is required to be a RN, PA, or Nure

Practitioner.

As a camp hand, you'll be responsible for helping with various tasks around camp and ensuring that everything runs smoothly. You will work closely with Sands and help the camp thrive from behind the scenes. This position enables you to appreciate how camp is run and what it takes to maintain camp.

As a male counselor, you'll work directly with campers, playing a pivotal role in their summer experience and helping create a positive, inclusive environment along with walking and talking faith. This role allows you

to change lives and help campers see the gifts God has given them, and they have a great male mentor to look up to.

As a Bridging Border Director, you'll have the opportunity to be on this leadership team and lead Day Camps and a Bridging Border trip. This position gives you the chance not only to work directly with campers but also to mentor and lead summer staff. You can bring camp to people who can't make it up the mountain to Hillside, Colorado.

Working at Rainbow Trail is a great way to spend your summer and an opportunity to make a

real difference in the lives of children and youth. Our campers come from all over the country and from various backgrounds, and we pride ourselves on creating a welcoming, close staff community. It could also be a life-changing summer for yourself with the people you surround yourself with and the time you spend with God in beautiful nature.

If you know anyone who would be a great fit in one of these positions, please email Cam at cam@rainbowtrail.org! This doesn't commit you to anything; we would love to discuss what ministry could look like for you!

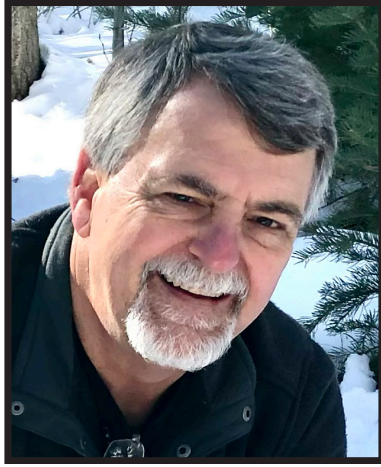
Rainbow Trail Mission Statement

Rainbow Trail Lutheran Camp creates holy spaces that embody God's radical grace to affirm, empower, and transform all people to be Christ's light in the world

Trail Boss

By Dave Jarvis - Executive Director

It has been a fast and furious spring for our ministry. Delta has lined up multiple retreats that have kept all of us hopping and I have been out in congregations doing promotion Sundays most weekends in April. And our whole full-time team attended the Rocky Mountain Synod Assembly in Loveland, Colorado. We are training our high ropes people at our site in early May along with our spring Board meeting, doing a small clean-up day at Locke Park to get that property ready to give to the Forest Service, and Memorial Day Work Weekend is full with over 100 people and with exciting projects to improve our site. We have also been purchasing lots of cool new gear for Popshop. We had awesome Spring snows (40 inches in March) that are setting us up for a summer full of singing around campfires.



Registrations have been very strong for this summer. There are still a few spots in Junior High #1, Junior #1 and both senior high camps, as well as both the Junior High and Senior High Compass Points weeks. There are a total of 100 open spots left for the whole summer! Don't miss out on the chance to be at camp with our great staff. If you are considering registering your child for camp, know we have camperships available to help. We know things are still not 100% back to normal for everyone. This is exactly why we have campership funds. If finances are an issue, email me and let's talk. Don't let money be the reason for not coming to camp. We have faithful donors that give specifically for camperships. There are no forms to fill out, and you don't need to share any private information. Take advantage of this opportunity to help your child have the best week of their summer at Rainbow Trail!

Our summer staff will soon be here! Our Directors arrive on Monday, May 20th and the rest of our ministry team arrives on May 27th. We are so excited about this team and all they will have to offer our campers. In a time when many other camps are still struggling to fill their staff, we had an amazing process and found fabulous candidates to fill our ministry team. There are many wonderful returners that you know and love. There are also a great group of amazing new folks that you will fall in love with as well. We are literally growing our own. 60% of our staff is from the Rocky Mountain Synod. We began the seven-week online portion of our training with this crew the last week of March and will complete their training with two weeks of in-person training upon their arrival for summer. Please keep this team in your prayers as they prepare for this summer. May God use them in amazing ways this summer!!

There has been great progress with the Land Exchange! Most of the field work has started and will continue through the summer. Most of that work should conclude this fall. Appraisals on both properties will happen this summer as well. We began our work with our site designer this spring and that has been an exciting process. I love the way that she looks at everything with fresh eyes, yet still knows the importance of our culture and our program. We are now looking at the spring of 2025 to complete the land exchange! There are still opportunities to support this effort. We have about \$25,000 that needs to be raised. If you would like to support this effort, mark your special check or online gift "Land Exchange." We are equipped to take stock gifts as well. I'd be happy to talk with you about the details! We will own our site and it will be the biggest celebration when that happens!

We continue to need your support for this ministry through prayer, through your gift of time and energy, and through your financial gifts. With your partnership, we are able to hire the finest staff, provide excellent facilities, and create a safe place for people to grow in Christ. I continue to be amazed and humbled by the financial support we receive for this ministry. I hope you know how much your gifts are appreciated. It is through your support that we are able to do things that we could have only imagined. Through the work of over 100 enthusiastic volunteers that join us Memorial Day Work Weekend, we figure that we are making about \$50,000 of improvements to our site every year for a fraction of that cost. Major projects for this year's Memorial Work Weekend include installing a new ceiling in the main room of Eagle Peak Lodge, installing new windows on the back side of the kitchen in Aspen, log oiling the exterior of the pavilion, installing a chimney for the woodburning stove in Juniper Lodge, installing a new railing on the deck at Eagle Peak Lodge, wood chipping the high ropes course, and painting the exterior of three of the cabins across the creek. There are so many ways to support this ministry. Gifts of all sizes, large and small, make this ministry run. Thanks for believing in the power of this ministry!

Nell and I are loving our new home. We are within 15 minutes of both of our kids, and it has allowed us to have family dinners once a month which we are loving. And I'm looking forward to a daddy/daughter weekend with Leah to see Taylor Swift in Indianapolis this fall. This should be a great time!

I'm so ready for this summer! Most of the full-time team was out at camp with our site design consultant last week and it felt like camp. All the camp dogs were there and they were so glad to be with each other. Know that we are overjoyed that we get to serve you and your children again this year. Thanks for the blessing of serving you... this is summer #36 for me at this sacred place. I can't wait! See you soon!

Until next time...

Dave

Thank You, Claire & Matt!



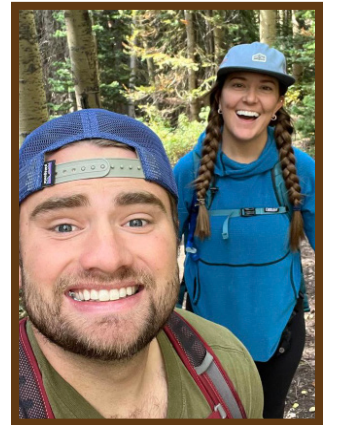
We are so thankful for our gifted 2023-2024 Program Assistants!! Claire Fisk and Matt Turman both joined us in the fall. They helped plan and implement our Confirmation and Senior High retreats. They both intentionally welcomed our guests and created relational spaces. We are grateful for their curiosity, creativity, and enthusiasm wonder they added to our team! They both will leave in May to start the next step in their careers. Matt will be serving at Mt. Cross in California and Claire will be serving at a Senior Living Center in Denver. Our Program Assistant experience is designed to equip and empower young adults interested in pursuing full time jobs in outdoor ministry. Although we had to say goodbye, we are so proud of Claire and Matt! Claire and Matt led with grace and enthusiasm, making sure our retreat guests experienced radical hospitality. Each one has made an impact on Rainbow Trail!

We wish Claire and Matt the best of luck in their journeys. May God go with the two of you as you engage in the world as beloved children of God! And always know you both have a home here!

CAMP Vibes

By Cam Regennitter - Director of On-Site & Bridging Borders

This month, I have been reading the book of Matthew. In Matthew 6, Jesus talks about the power of prayer. He shares that prayers don't just have to be loud with many words in the streets or the churches. Those are good, and he shares that those prayers will also be "rewarded." But Jesus shares that going to your room alone and praying alone is just as valuable. The amount of words doesn't make a prayer more valuable; it's mainly about making it between you and God. This was powerful because when we teach campers about prayer, we tell them that any prayer is good prayer and not to feel pressure that their prayers aren't good enough. They are powerful and always good enough for God!



Summer is approaching quickly! We are in full swing as we prepare for the summer season. Staff is hired and currently going through online training, the site is being prepped to host an average of 150 each week, and full-time is getting mentally and physically prepared to do another great three months of RTLCA ministry. This group of staff has a great mix of returners and new staffers. I'm excited for the potential and passion they bring. Know your campers this summer are in for something special, and I pray they have some life-changing weeks.

For Bridging Borders, we had to get creative this year! Since most churches we partner with attend the National Youth Gathering, I wanted to find other ways our staff could serve. We are sending a group of staff to Joshua Station for a week to volunteer. They will spend the week serving wherever JS needs them, in the kitchen, landscaping outside, helping run the program, or just being with the families. This is a great way to give back to Joshua Station; this relationship has only grown since 2022!

Another trip we are doing is sending Directors to the National Youth Gathering to lead service trips in New Orleans! The Youth Gathering searches for "Servant Companions" to lead these groups in service work. They will do that for the week and help run the gathering in the evening. This is also a great way to partner with the ELCA since they always seek volunteers. So, we will see a lot of you down there!

In my personal life, things are going well! Delta and I are continuing the wedding planning process! We are so excited to get our closest friends and families up to camp to celebrate. Dave is officiating our wedding, we couldn't think of anyone more fit to guide us during the ceremony. I could also attend the Final Four with Dave, Ben, and Greg Dorow in April. It was so cool to be in that environment with big-name college teams duking it out for the Championship. It was also my first time in Phoenix! I have also recently gotten more involved with Golf. The dudes in my family have been playing a lot more for the past couple of years. I continue to struggle with my irons, so if any golf pros out there have any advice for an amateur like me, I would appreciate it!

Thank you all for your continued support, love, and prayers for this summer. I am excited to return there and continue God's calling this summer.

Go In Peace,

Cam

Simonton Says

By Sands Simonton - Director of Site and

Hello RTALC community! I'm writing to you on yet another perfect day up here on our humble mountain side. Wherever you are, I hope you've enjoyed your fall, winter and beginning of spring! So far, the weather up at the camp has been pretty darn warm. I'm sad to see the snow leave, but as it gets warmer, I get more and more excited for the summer to come. The snowfall at camp came a little later this year than in the past, but certainly didn't hold back on the amount. Earlier this month we got a cumulative three feet of snow in the span of just a couple weeks. My time was spent mostly on plowing, shoveling and skiing! Since then, it's almost all melted. So much so that I was able to have big repairs completed up on the course. After 3 years, the Dangling Duo is finally back in action! We can't wait to put that back into the activity rotation for you.



Let's talk about the site. I am happy to report that the site is in great shape right now. Staying open year-round puts a big demand on our facilities. It can be challenging, but without the support of Dave and the rest of the Fulltime team, it'd be pretty much impossible so thank you to the entire RTALC team. Over the last 8 months, our two Program Assistants Claire Fisk and Matt Turman were also incredible and deserve a huge thanks. Without them, our season wouldn't have been what it was and I'll miss them both!

Memorial Day is officially in my cross hairs! I know lots of you are looking forward to our annual work weekend at the end of May this year so here's a quick rundown. We have a great selection of projects this year for you to choose from if you're planning on attending. Starting with Eagle Peak, we plan on tearing out the current ceiling in the main room and matching it to the back rooms with T&G. Moving out to the deck, we'll install a new wrap around railing with a wide top for setting things on, and new support posts for the overhead rafters. Installing/plumbing the wood stove in upper Juniper is a must do this year and we are very excited to improve that space even more. Pop Shop has a closet (old dining hall bathroom) that needs some love so we plan to remodel it completely with custom shelving for our merch, Holling also happens to house our water distribution system and we've decided to install a backup generator to power our pumps in case of a power outage. A few others on the list include installing a new window at Chris's baking station, replacing some of our worship space benches at the Firle and the Outdoor Chapel, installing a new flag pole at the base of the site, repairing the BC gutters and snow breaks, replacing every door handle on the cabins, cleaning up the crawl space under Aspen, splitting and chipping wood, interior wall texturing and painting, exterior painting and log oiling and many other miscellaneous things! I can't wait to see these projects get completed and of course to see and talk to all of you who are coming to volunteer your time and expertise.

As for me, things are very good in my life. The family is doing well and Bode is of course great too. My roommate/landlord/business partner Kyle and I have been continuing to make art out of our garage shop and the business is slow, but doing great still. And of course, it wouldn't be Simonton Says without me mentioning how much fun I had skiing this year. Which I definitely did...

Love you all, see you soon.

-Sands

Choose to Designate your Thrivent Choice Dollars to RTALC and Make A Difference!

Thrivent Financial for Lutherans has a charitable giving program called Thrivent Choice. Each member is allocated a set amount of money to give to the Lutheran organizations of their choice. Last year, Rainbow Trail received \$28,000 from this program. Our goal for 2023 is \$35,000. We hope that you will designate your allocated dollars to Rainbow Trail Lutheran Camp. You will need to go out to the Thrivent website quarterly to designate your Thrivent Choice dollars. We know that is a lot to remember and we can help. If you will let us know that you have designated your Thrivent Choice dollars to Rainbow Trail, we can send you either an email or a postcard quarterly to remind you to go out and designate your dollars. If you haven't designated your Choice dollars to any organization, just follow the steps below to designate them to Rainbow Trail.

HERE ARE STEP BY STEP INSTRUCTIONS ON HOW TO DESIGNATE YOUR FUNDS:

Over the Internet

1. Log on to www.thrivent.com
2. Sign in with your username and password or register for an account.
3. Once you have registered and signed in, select the "Direct Choice Dollars" button for Thrivent Choice in the right hand side.
4. In the middle of the next page, type "Rainbow Trail Lutheran Camp" in the "Organization Name" box, leave "City" blank, and click search.
5. Next to our camp name, you will click the "Direct Now" button. You will be able to assign all or part of your Choice dollars to us. You can also set it up so Rainbow Trail continues to get your future Thrivent Choice Dollars as well.
6. Click the "submit" button and your Thrivent Choice Dollars will be sent to our ministry.

Over the Phone

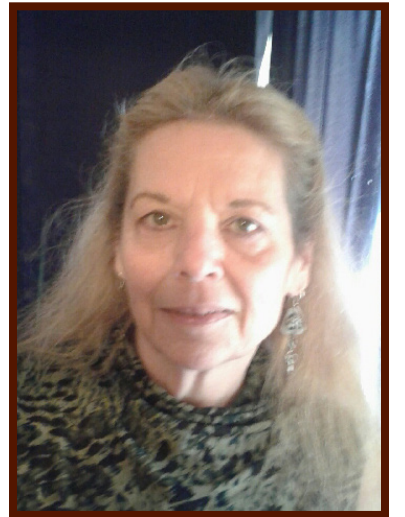
1. Call 800-847-4836.
2. Follow the prompts that are given.
3. You will be asked for the last four digits of your Social Security number, then you will be sent through an automated operator system. Our camp is listed as "Rainbow Trail Lutheran Camp."

This is just one more way that you can give to support this ministry. Encourage your friends that are Thrivent members to do the same! If you have any questions, call Dave at the Canon City office.

Chris' Corner

By Chris Seaman - Food Service Manager

Hello to my RTALC Family! As I write this article, I'm thinking about the best 21 years of my life; so far! Never could I have imagined becoming a member of the most loving and devoted family that I could have! I went to Camp for my interview. I walked up to the Aspen back door, and this guy was coming out the door and sweeping. My first words to Dave Jarvis were, "I love a man who knows how to use a broom!" I got a weird look, and "how may I help you?" "I'm here to apply for the Retreat Cook position." Of course, poor Dave had no idea what my sense of humor was like! Needless to say, Dave took a chance and hired me! I can't begin to tell you how many memories I have. The good, the bad, and the best were all created here at this most Godly place! This is my final Summer as Head Cook.



Have no fear; I will still be cooking for retreats. Just another opportunity to spend time with me! I will also write Manuals for the Head Cook, a Kitchen Procedure Manual, and a Cookbook! For the cookbook, I would love to be able to have all the favorites in there! If you have a personal favorite, please send it to chris@rainbowtrail.org. I will make sure it gets in there. My body won't miss the insanity of summer, but my heart is another story! How the heck did I get This old? I am looking forward to being able to visit some dear friends, finally plant a garden, and put in outside plants!

The fact that Camp is almost upon us, as always, has crept up on me. Where did the time go? It's with a heavy heart that I have to bid farewell to this year's PGA's. Claire Fisk and Matt Turman, I am so very grateful for our time together. You both were ROCK STARS!!!

To all who have met me, welcomed me, and loved me, I would like to say Thank You!!! So, in closing, please take care of yourselves and each other, and always remember...

"GOD IS GREAT"

-Chris

ORDER RAINBOW TRAIL BLEND FOR YOUR CHURCH!

Tired of Folgers? You can order 5 pound bags of delicious, fresh-roasted, whole bean or ground Rainbow Trail Blend coffee online! What's even better is that all profits of RTALC's unique coffee blend provide funds for kids to come to camp! Start ordering delicious coffee with a purpose for your congregation today by going to shop.rainbowtrail.org!

SAVE THE DATE: COLORADO GIVES DAY FOR 2024

Support RTALC on the 15 th Annual Colorado Gives Day on Tuesday, December 10, 2024. Save the date! Coloradans will come together again to raise millions of dollars for nonprofits like Rainbow Trail. Last year, a remarkable \$76 million was distributed to 3,381 Colorado nonprofits. RTALC raised an incredible \$171,982 in that 24-hour period. With the support received in 2023, we have set a goal for 2024 of \$150,000! All funds raised will go towards our Annual Fund. We need a great Colorado Gives Day to end the year strong. Also, we are still in the middle of the land exchange process and some people have shifted their annual fund donations towards that Capital appeal. We still need our annual funds to sustain our day-to-day operations. Mark your calendars and make a difference!



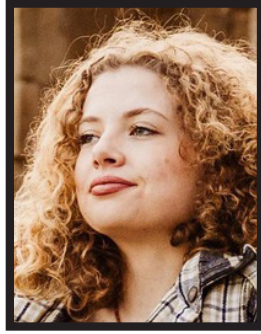
Now THIS is What You've Been Waiting for...



Becca Schatte
Counselor
Valparaiso University
Jefferson City, MO



Daniel Benson
Counselor
Pacific Lutheran University
Centennial, CO



Hannah Nisonger
Counselor
Redeemer University
Ancaster, Ontario, CA



Ben Hizer
Support Staff Director
Regis University
Omaha, NE



Campbell Smith
Camphand
Erie High School
Erie, CO



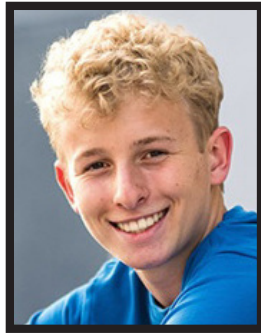
Sawyer Smith
Counselor
University of Northern Colorado
Erie, CO



Annika Buhr
Assistant Cook
Colorado State University
Greenwood Village, CO



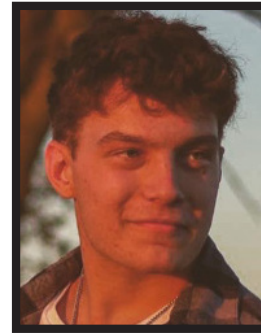
Emma Hemann
Counselor
Wartburg College
Elkton, MN



Zach Burggraaf
Maintenance Assistant
University of Iowa
Iowa City, IA



Crate Rhodes
Guitar Instructor
Clemson University
Anderson, SC



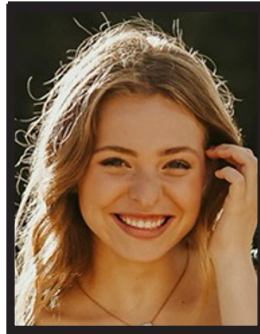
John Talley
Counselor
St. Olaf College
New Berlin, WI



Mackenzie Ross
Maintenance Assistant
Elon University
Erie, CO



Kobey Mojzis
Counselor
Belmont University
Millstadt, IL



Maddie Parker
Counselor
Regis University
Millstadt, IL



Carter Sevier
Counselor
Colorado School of Mines
Arvada, CO



Hannah Resley
Counselor
University of Nebraska Lincoln
Highlands Ranch, CO



Hunter Resley
Compass Points Director
Kansas State University
Highlands Ranch, CO



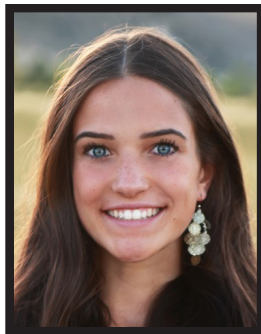
Talia McLaren
Counselor
New Mexico State University
Albuquerque, NM



Abel Gamelin
Counselor
Roanoke College
Littleton, CO



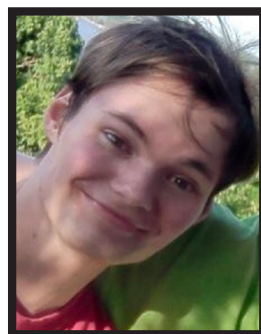
Kylie Brown
Counselor
Pikes Peak State College
Colorado Springs, CO



Riley Sawinski
Counselor
University Of Tennessee
Lakewood, CO



Andrew Sather
Counselor
Missouri University of Science & Tech
Saguin, TX



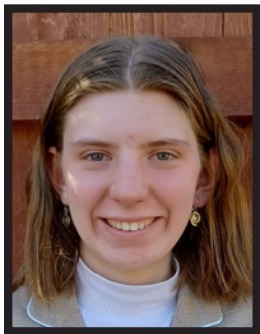
William Dohle
Bridging Borders Director
Pueblo Community College
Pueblo, CO



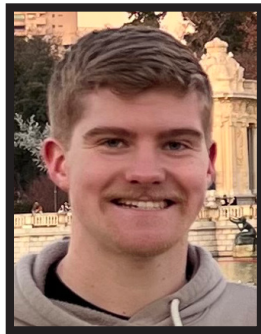
Lynne-Estelle Dohle
Arts & Crafts Instructor
Colorado State University
Pueblo, CO



Lily Jenkins
Office Assistant
Pacific Lutheran University
Garden City, ID



Atalia Fisher
Counselor
George Fox University
Canon City, CO



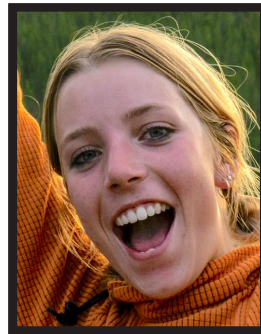
Bryan Brown
Counselor
Colorado State University
Arvada, CO



Alex Brown
Counselor
Valparaiso University
Arvada, CO



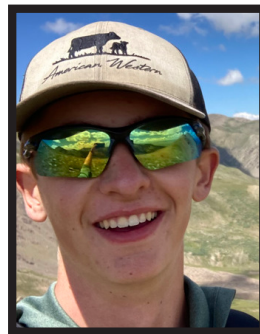
Kathryn Smith
Counselor
Depauw University
Englewood, CO



Lindsay Smith
Maintenance Assistant
Colorado State University
Englewood, CO



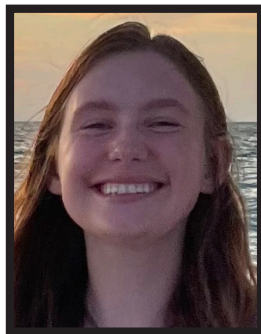
Amelia Smith
Counselor
Grand Canyon University
Parker, Colorado



Ian Smith
Ropes Coordinator
University of Montana Western
Parker, Colorado



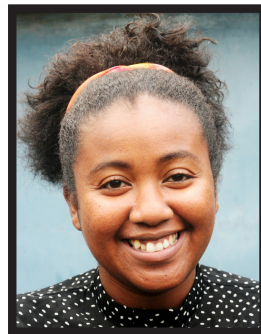
Claire Koenig
Travel Support
St. Olaf College
Centennial, CO



Brianne Engel
Woodcarving Instructor
Rollins College
Littleton, CO



Jackson Dalen
Counselor
Wartburg College
Underwood, IA

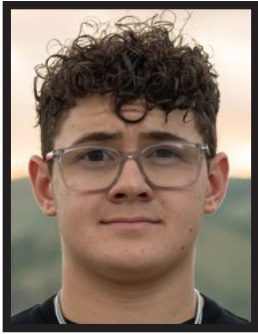


Amalia Etromaro
Counselor
Madagascar

...The 2024 Rainbow Trail Summer Staff



Carley Malm
Counselor
Gustavus Adolphus College
McPherson, KS



Jack Major
Counselor
Savannah College of Art and Design
Golden, CO



Becky Ritter
Ropes Coordinator
University of Minnesota
Rocklin, CA



Sarah Hoskins
Counselor
Pacific Lutheran University
Westminster, CO



Faith Hatch
Bridging Borders Director
University of Northern Iowa
Norwalk, IA



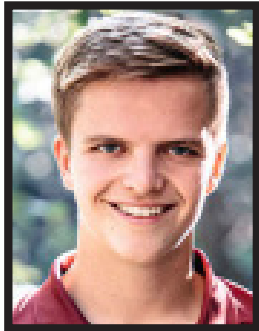
Maddi Baldwin
Counselor
Wartburg College
Denver, CO



Addie Flesch
Kitchen Assistant
St. Olaf College
Englewood, CO



Kendall Flesch
Kitchen Assistant
Gustavus Adolphus College
Englewood, CO



Payton Waggoner
Bridging Borders Director
Grand Canyon University
Parker, CO



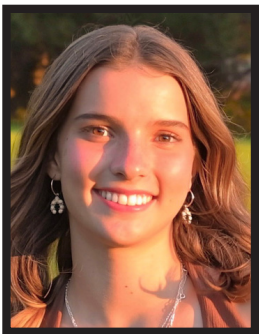
Nancy Phillips
Camphand
Chatfield High School
Littleton, CO



Kelsey Chellberg
Videographer
Kansas State University
Overland Park, KS



Teddy Heffernan
Camphand
Heritage High School
Littleton, CO



Sophie Fowler
Counselor
University of Nebraska Lincoln
Centennial, CO



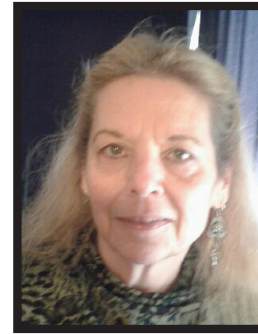
Evan Fowler
Compass Points Director
Colorado State University
Denver, CO



Will Johnson
Director of Compass Points
& Day Camp Ministries
Salida, CO



Sands Simonton
Director of Site &
Facilities
Salida, CO



Chris Seaman
Food Service Manager
Westcliffe, CO



Tricia Lindsey
Executive Secretary
Cañon City, CO



Aurice Worley
Bookkeeper
Cañon City, CO



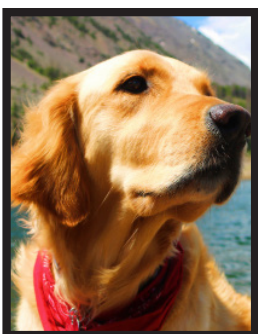
Delta Wise
Director of Retreat
Ministries
Colorado Springs, CO

Cam Regennitter
Director of On-Site
& Bridging Borders
Colorado Springs, CO

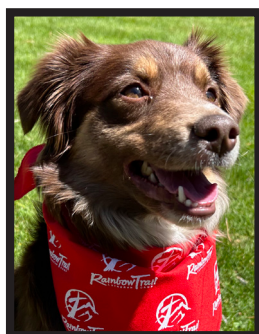


Dave Jarvis
Executive Director
Colorado Springs, CO

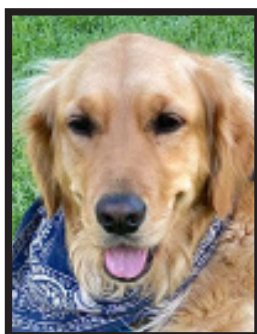
Nellie Jarvis
Intro Camp Director
Colorado Springs, CO



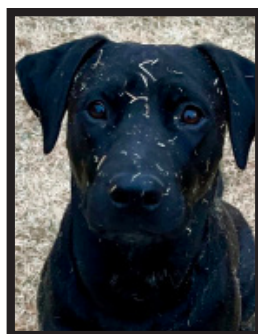
Dakota
Welcome Committee
Colorado Springs, CO



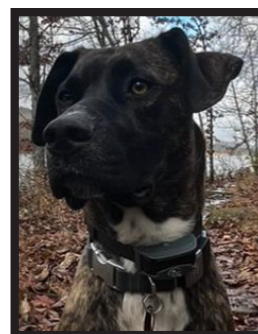
Penny
Welcome Committee
Colorado Springs, CO



Pawnee
Welcome Committee
Colorado Springs, CO



Bode
Welcome Committee
Salida, CO



Norman
Welcome Committee
Salida, CO



MAKE A DIFFERENCE AND GIVE YOUR BUSINESS A SHOUT OUT AT GRACE RACE

Every fall, Rainbow Trail Lutheran Camp hosts its annual Grace Race to help stamp out world hunger. This annual 5k run/walk was started as part of RTLCLC's 50th anniversary in 2007, to raise money for the ELCA World Hunger Appeal. The event is held in collaboration with the Rocky Mountain Synod Hunger Network. Over the last sixteen years, the Rainbow Trail community has contributed \$88,633 to the ELCA World Hunger Appeal. But we think we can do more. The 17th Annual Grace Race will be held on Saturday, October 5, 2024. We are aiming for 300 participants for this year's race. We want to send a \$10,000 check to the ELCA World Hunger Appeal!! Another great way to support this event and cause is to advertise your business on the classy Grace Race tech shirts. For a \$300 donation, we will add your company name and logo to the race shirt. There will also be a link for your business off of the RTLCLC Grace race webpage. We'll give your business some great press at the race and you will help make an incredible difference in our world. Contact Dave Jarvis at dave@rainbowtrail.org for more details.

Into The Wilderness

By Will Johnson - Director of Compass Points & Day Camp

Happy spring, everyone! I hope everyone out there is enjoying the warm weather and getting back outdoors this season. I just spent the weekend closing out the ski season at Monarch Mountain with Sands and my roommate Sam, and let me tell ya, what a season it has been! It's such a blessing living in Salida, being 30 minutes from the lifts, and I couldn't be happier settling anywhere else.

Looking forward to summer, we are preparing to send out 29 Day Camps and 9 Compass Points trips! A little light on the Compass Points trips this year because of the ELCA National Youth Gathering in New Orleans, but still plenty of opportunities for some great ministry! We also got 45 brand new internal frame Osprey backpacks with rain covers this year! A huge shout out to Bill Dausses for the donation and totally revamping our equipment this summer! This will greatly enhance our program and our campers' comfort while out on the trail for summers to come. We appreciate it, Bill.

Outside of camp life, I bought a 2002 Subaru Impreza, which I guess checks "buying a Subaru" off the list of "things to do when you move to Colorado"! It's a ton of fun to drive, and I'll probably drive it back home to Texas to visit my family. My family and I are actually coming together in May to spread my Mother's ashes at our family ranch in Dripping Springs, TX, the same place that we spread my Father's ashes almost 10 years ago. It's funny how crazy this thing we call life can be, yet simultaneously so fun and full of adventure and God's never-ending love. Please know that I'm doing great through this process but prayers are always appreciated.

As always, you are welcome to visit me at Eagle Peak Lodge this summer for coffee and a good chat! I'm looking forward to seeing everyone this summer, and happy trails!

-Will

Great Ways To Continue To Support RTLCLC and our Ministries

The support of our donors is key to our ministry thriving and growing. There are a multitude of ways that you can give to this ministry. Stocks, checks, online, and gifts to specific projects like the land exchange or camperships are just a few. However, there are some other tools available of which you may not be aware. If you own an IRA and are over the age 70 1/2 you may be eligible to make a Qualified Charitable Distribution (ie a contribution to RTLCLC) directly from your IRA and not include the amount given as subject to income tax. Because of recent law changes, it is always good to consult your tax advisor, but if you are eligible for this, it is a very good deal! Donor Advised Funds (DAFs) are tax-advantaged investment accounts used for charitable giving. You can fund a DAF with cash or other assets and take a tax deduction for doing so. Usually people opt to contribute their appreciated investments so they don't have to face the tax consequences of selling it themselves. Once inside the donor-advised fund, your contributions continue to grow tax-free until you elect to issue a grant to the IRS-approved charity of your choice. The beauty of donor-advised funds is they're available to anyone. Donor-advised funds are designed to be a simple, turnkey way to execute your philanthropic wishes, whether you're giving \$500 or several million. You can give as much or as little (as long as it's at least \$50) as you want to one charity or dozens whenever you choose. It's for this reason that Van Sant calls donor-advised funds "flexible philanthropy." Take advantages of these tools to help our ministry grow. Talk with your financial advisor for more details. Or contact Dave at dave@rainbowtrail.org and he can put you in contact with someone that can help.

Words With The Wise

By Delta Wise - Director of Retreats



Hey y'all! It's April, and we are currently defrosting because spring has finally sprung up at camp, which is breathtaking. The past week blessed us with turquoise blue skies and temperatures in the mid-60s. Finally, I can put my puffy coat away and throw on some shorts! Last week we even led several hikes up to the Balman Reservoir. Well... we stopped at the Million Dollar Curve because of all the snow higher up the road... but still, we traded in our snowshoes for hiking boots for the first time in a long time.

The grass is slowly turning darker shades of green by the day, like a black and white photo slowly regaining just the color green. The big aspen tree in front of Columbine is blooming, and the sun is beating down on our panting camp dogs, who are itching for summer camp to start. Just the other day, the program assistants and I took a midday break to bask in the UV rays on Columbine's porch. Since it was the first day since September we could wear shorts, we got sunburned pretty badly. But those burns will soon turn into classic summer staff tan lines. Speaking of, we all watched the eclipse here at camp, though it wasn't a total eclipse like it was in my hometown of Fredericksburg, Texas. But I read that in the year 2045 on the very perfect summer camp day of August 12th, there will be a total eclipse that passes right over camp! Reunion anyone?

We aren't the only ones enjoying all this warm weather. For the animals, it's spring fever across the Rockies. Last week, I came up about fifteen feet behind a Lynx who was sitting right by the RTLCLC welcome sign. We frequently hear coyotes howling at sunset, elk herds welcome us with their impressive fence-hopping performances as we drive up Billy Humble Road, and all the birds are practicing their morning hymns. To me, it is heaven. Especially since the parks are still closed and there aren't any people around yet, Penny and I can go on long hikes and never see a soul. All you'll hear is the distant thunder of a plane passing by. Claire Fisk and I have recently become obsessed with the Flight Radar app, which allows you to see what planes are passing overhead. Most of the planes going west are heading to Las Vegas or Los Angeles, but we try to spot fun ones going places like Tokyo or Zurich. Claire also introduced me to the iced Juniper latte from Peregrine Coffee in Westcliffe. I highly recommend it when you're passing through Westcliffe to get to camp.

I have five more retreats until summer staff training begins on May 20th. One of these is the Adventure Experiences ropes course training that takes place here for a week. As some of you may know, I was the ropes coordinator at RTLCLC with Cam in the summer of 2018. Since it's been six years, I have to get recertified, which I'm super excited about. Not only that, but I picked my guitar back up and cut the acrylic nails short so I could start to play again. My transition from corporate Barbie to camp Barbie is going smoothly. I realized that with my program assistants, Matt and Claire, leaving on May 11th, I would need to be able to lead camp songs on my own. Matt Turman is a true musician, so having his guitar skills has been a huge asset to this retreat season. In April alone, we hosted the Rocky Mountain Synod first call pastors and deacons, Ascension Lutheran families, and First Lutheran confirmation kids, all of whom love some good camp songs on a guitar while sitting around the campfire eating s'mores. Something I hear pretty often is adults exclaiming that they "haven't had a s'more since they were a kid!" What a reminder that we are all still kids at heart, and adults need camp just as much, if not more, than kids do. Now more than ever, retreating into God's creation is vital to the body, soul and mind. So come on up!

Personally, Cam and I are five months out to our wedding. Things are getting real! I have a dress alterations appointment and bridal shower in Texas in June, my bachelorette party in Breckenridge is in July, another bridal shower is here in Colorado in August, and then our wedding is September 14th here at camp, which also just so happens to be my busiest time of the year for retreats. Luckily Cam and I have the best jobs in the world and were able to get time off right after our wedding to go on a honeymoon. We decided to go to Costa Rica, which will be so fun as I've never been out of the country and Cam has never been to the beach. Cam pitched the idea to me and after I saw that there are monkeys, sloths and lizards everywhere and I was absolutely sold. I love animals. I feel so incredibly blessed that we get to do this together! If you have any tips for a bachelorette in Breckenridge, weddings in general, traveling to Costa Rica, or marriage advice- let Cam and I know when you see us this summer! Speaking of, I can't wait to see all of you for my first summer on full time staff. I finally don't have to take PTO to come work at camp. But if you are taking PTO to be at camp, I can honestly say there's no better way to spend it. In less than 2 short months, it'll finally be camptime in the rockies... we'll see you here.

-Delta

TRAILBLAZERS & PATHFINDERS

The following individuals are members of the 2024 Trailblazers and Pathfinder's Club. Trailblazers is an annual giving club that keeps the ministry at Rainbow Trail alive and growing. To join, contact Dave 719-276-5233 or check out the "Donate" tab on our webpage at www.rainbowtrail.org. Many thanks to the following supporters of Rainbow Trail!

Base Camp Club

\$120-\$249
 Alan and Susan Shelinbarger
 Annette Kvamme-Leijen and Ernest Leijen
 Annie and Kevin Pepper
 Anonymous
 Art Kraus and Michelle Stone Kraus
 Barbara and Chuck Exley
 Becky Zinn-Caulfield and Tom Caulfield
 Ben and Katie Rude
 Beth and John Turman
 Betty Ann Arner
 Bob and Linda Morton
 Bonnie and Jim Klamerus
 Brad and Kathleen Chewakin
 Brandon and Jennifer Wade
 Bud and Kim Smoot
 Caitlin and Joshua Nelson
 Cam Caulfield
 Carol Matson
 Cathy Goodman
 Chad and Aly Kohlmeyer
 Cheryl Almquist
 Christen and Andrew Brown
 Christina Brown-Erickson and Steven Erickson
 Christy Klemz
 Cindy and Mark Boatright
 Clarence Ver Sluys
 Connie Steiert
 Cordell and Patricia Halverson
 Corey and Katie Okes
 David and Ingrid Waggoner
 David and Janet Kennedy
 David Kumpe and Rosemarie Wipfelder Kumpe
 David Miller and Anne Wenzel
 Dena Richter
 Denise and Scott Ikenberry
 Don and Carol Troike
 Donna Hayden
 Eric and Carolyn Gustafson
 Erik Peters and Julie Horan
 Ethan Roberts
 Gary and Joy Symes
 Gene and Angie Youngmann
 George and Emilie Rickstrew
 Gina and Jay Simonson
 Gordon and Sonja Sandquist
 Greg Ronning
 Hailey Mohler
 Hal and Shirley Nilsson
 Jacob Dolan and Becca Sager Dolan
 James and Candy Hersch
 Jana and Paul Oman
 Jason and Teresa Moore
 Jean Larson
 Jennifer Newman and David Engel
 Jeremy Miller
 Jessica and Jesse Reeves
 Jessica and Todd Doyle
 Joyce Mills
 Judy Leiseth
 Julie and Scott Miller
 Karen Witt and Jim Puga
 Kari and Mitchell Kusek
 Katie and Daniel Scherr Bock
 Keith and Tammy Wetter
 Ken and Paula Wills
 Kendra and Steve Dunn
 Kevin and Marybeth Barkocy
 Kim and Jim Gonia
 Kirk Dugan
 Kris and Tim Carr
 Kristin McCracken
 LaDonna Jurgensen
 Landon Harman
 Leah Jarvis
 Leonard and Judy Walgren
 Linda Drury and Drury Family Fund
 Linda Green
 Lucy Archambault
 Maria Erling and John Spangler
 Mark and Julie Stover
 Marty Bendel Waite
 Mary Bolton-Koppenhaver
 Mickey and Cindy Bannister
 Mike and Laura Growney
 Nicole and Bob Long
 Pat and Rob Suter
 Patti Nelson
 Paul and Kathy Casey
 Paul and Nancy Judson
 Phil and Dee Erlander
 Phyllis and Randall Lynn
 Richard and Valerie Watkins
 Rick Green
 Roberta Wentworth
 Samantha Johnson
 Sara and Clark Olson-Smith
 Sara and Daniel Romanski
 Scott and Elizabeth Wertz
 Sharon and Bruce Stokes
 Stan and Sandy Johnson
 Steven and Debra Kinz
 Susan Pfabe-Wiggans and Scott Wiggans
 Terrell and Lee Manuel
 Terry and Holly Wubbena
 Thulisiwe and Charles M Beresford
 Tiff and Kevin Roiseland
 Tim and Deborah Meyer

Todd and Christine Wright
 Todd Engdahl
 Virginia Crow
 Zach Burggraaf
Rainbow Lake Club
\$250-\$499
 Allison and John Kane
 Amy and Alan Schmuck
 Anndi Russell
 Anne Herbig
 Anonymous
 Ben and Corliss Wyatt
 Bert Lager
 Bryan and Denie Nordin
 Candy and Larry Ourada
 Carl and Gail Schurman
 Cheryl Masters
 Chuck and Gayle Newell
 Clint and Anne Pluenecke
 Corey and Paula Carlson
 Craig Kelly
 Damon and Anna-Marie Larson
 Daniel Hanson and Aimee Lenth
 Dave Gunnlaugsson
 David and Michelle Louis
 David Dorow and Wendy Clark
 David Price
 Dawn and Shannon Ambrosio
 Deborah Wangerin
 Delbert Grauerholz
 Diane Boldt and Paul Hurcomb
 Donna Madsen
 Douglas and Naoko Kohlhepp
 Eric and Pam Gohl
 Eunice Mansfield
 Greg and Barbara Haschke
 Greg and Shanna Murrell
 Heather and David Kinz
 Heather Dahms and Joey Henke
 Herbert Korff
 Ina Kay and Tom Devers
 Jack and Phyllis Brown
 Jane Jebesen
 Jay and Tia Gamelin
 Jennifer and Todd Crosbie
 Jerry and Diane Miller
 Jim and Pat Speckmann
 Jim Ruden
 John and Peggy Harris
 Jon and Jo Powers
 Joyce M Schmidt Living Trust
 Karen and Scott Pedersen
 Katherine Graham and Justyn Hamilton
 Kathryn Schmidt
 Ken and Kay Gerhart
 Ken and Mary Sorenson
 Kiara and Andrew Jorgenson
 Kylie Stitt
 Lannette Abbey
 Larry and Eleanor Bonicelli
 Laura Harney and Eric Sollenberger
 Linda Stuehrenberg
 Margaret and Norm Aarestad
 Margot Wright and Dan Montoya
 Maria and Richard Smith
 Mark and Heidi Peterson
 Mark and Natalie Talley
 Merle and Martha Lydick
 Nancy Henning
 Paul Olsen
 Ray and Carrie Harney
 Ron and Heather Frost
 Ron and Katy Harder
 Ruth Idler
 Steven and Pamela Haigh
 Steven Gustafson and Beth Knutson
 Sue Michel
 Sue Samuelson
 Susan and Steven Kohuth
 Susan Wedel
 Suzan Lund and Joseph Moser
 Terry and Susan Pletkovich
 Tim and Jen Walmer
 Tres and Debbie Hicks
 Valery and Ross Rosenow
 Walter and Karyl Meyer
Eagle Peak Club
\$500-\$999
 Adrian Miller
 Alissa and Josh Plumley
 Anonymous
 Audrey and Wade Beckman
 Ben and Bev Larzelere
 Ben Hogue and Marshall Monda
 Bill and Shelly Hunter
 Brian and Marisa Carlson
 Carl and Katie Edstrom
 Carolyn Brink
 Carrie Baylis
 Cindy Weist
 Corey and Jeanette Stull
 Craig and Beverly Essex
 Dave and Carol Hartenberger
 David and Linda Higbea
 Dee and Robert Jackson
 Donald and Joyce Stephens
 Elizabeth and David Bowman
 Erik and Kim Williams
 Fred and Audrey Hansen
 Gail and Mark Muehlethaler
 George and Nancy Jacobson
 Glenn Grandy

Greg and Heidi Thiele
 Hannah Harman
 Harold and Susan Stitt
 James Myra
 Jeff and Trisha Carlson
 Jeri and Mike Rhodes
 Jerry and Deb Paul
 Jim and Jann Marie Crock
 Joel and Carolyn Buck-Gengler
 John and Kathleen Erickson
 Judy Hagee
 Judy Peters
 Julie and Jary Shimer
 Karen Nulle
 Kate Tjeerdsma Betzel and Filipe Betzel
 Kathy and Craig Twaddell
 Keli'i and Karen Rogers
 Kent and Elizabeth Lund
 Kimberly and Chris Sandman
 Kris and Greg McDaniel
 Kristen and Mike Saathoff
 Kurt Maack
 Larry and Lavona Brown
 Lisa Meyerdierks
 Lynda Keeley
 Lynn and Pat Trenda
 Maren Diercks and Paul Eppard
 Mark and Allison Whitmire
 Mark and Anne Schwartz
 Mark and Diane Sather
 Mark Skinner and Lou Ann Cheslock
 Skinner
 Marsha Yosten
 Mary Koepp
 Melissa Beaman
 Melissa Chepulis
 Michael Meyer and Enette Larson-Meyer
 Mike and Jenel Lundquist
 Nancy Skinner
 Pam and Dave Challis
 Payton Waggoner
 Rebecca and Rich Collins
 Rick and Becky Romano
 Robert Lundgren
 Roger and Jane Barrack
 Roxann and Tom Hare
 Ryan and Rianne Anderson
 Sarah and Geir Ostrem
 Sarah and Josh Anderson
 Silje Ostrem
 Stephanie Lord and William McHardy
 Suzanne Johnson
 Teak and Clifford Simonton
 Todd and Mary McNeil
 Trevor Alm
 Vince and Leigh Felletter
Challenger Peak Club
\$1,000-\$1,499
 Anonymous
 Aurice and Bob Worley
 Ben Spiger and Kendra Wilde
 Betty Kirsebom
 Bradley and Roseanna Doty
 Brian and Kira Ward
 Cheryl and Stephen Mahon
 Chris and Eric Hjelmsstad
 Chris and Stephanie Frankle
 Dave and Betsy Risendal
 Don and Bernie Mathison
 Dorothy Moran
 Evan and Beth Smith
 Gary and Kay Schritter
 Gloria and Joel Friesenegger
 Hanne and Kip Schauer
 Hunter and Janet McDaniel
 Jean Van Ordstrand
 Jeffrey and Liz Thomas
 Jill and Douglas Monsen
 John and Kathy Eckhardt
 John and Pam Marietta
 Julie and Mike Speck
 Karen Pforr
 Kay Luttinien
 Kevin and Tracey Engelhardt
 Kim and John Olson
 Kurt and Marsha Ehrhardt
 Laura Wouters
 Leslie Swetnam
 Liza and Nathan Blom
 Lorna and Zach Borger
 Marilyn and David Meline
 Matthew and Sami Meline
 Matthew and Autumn Schwabauer
 Mia and Scott Harberts
 Nancy and Al Saunders
 Orla O'Callaghan and Paul McCarthy
 Paul and Lisa Smith
 Paul Schauer
 Peter Meyer and Kyra Jensen Meyer
 Randy and Marilyn Williams
 Rick and Angela Guinn
 Robert and Melinda Marold
 Roger and Claudia Larson
 Ron and Jean Bruns
 Ron Yergert
 Russ and Cheri Sorensen
 Ruth Von Mosch
 Seth and Marianne Prochaska
 Sonja Thorwald
 Sophia and Nick Hassman
 Stan Martin
 Stanley and Evelyn John

Steve and Nancy Lord
 Tom Williamsen
 Vicki and Donald White
 Wanda Cowlshaw
Long's Peak
\$1,500-\$2,499
 Alisa and Jim Thomas
 Amy and Matthew Pallas
 Arthur Norman
 Austen and Christina Smith
 Cathy and Bill Goss
 David Lee and Lisa Brown
 Delores and Gerry Mueller
 Don and Lillian Filegar
 Edwin and Carleen Woolley
 Emily and Scott Dalen
 Eric and Elizabeth Berrill
 Holly and Nick Massie
 Janice and James Mulvany
 Jay Davis
 Jim and Cindy Britton
 Jimmy and Shirley Pettigrew
 John Rasmussen
 Karen and Richard Stenger
 Ken and Sheryl Mielke
 Kevin and Janet Flesch
 Kim and Dave Guinn
 Kristin and Christian Nisonger
 Laurie and Clay Mohler
 Leigh Powell and Kathy Gash
 Mackenzie Nading
 Marcus and Liz Kochis
 Marvin Plugge
 Michelle and Dave Okes
 Orvid Olson
 Ray and Nicole' Ferry
 Rick and Charlene Coulson
 Roger and Alice Aden
 Roger and Cheryl Thompson
 Roger and Mary Riekena
 Rosetta Bidne
 Ruth and David Ryll
 Sandra and M. Scott Elvington
 Severt and Mary Kvamme
 Susan and Dave Fisk
 Tom and Shari Gould
 Vernon Pettit
 Wendy and Glenn Kuzminski
 William Ernstrom and Janie Hanson-Ernstrom
Mt. Elbert
\$2,500-\$4,999
 Ann Hultquist and Roger Loots
 Annie and Jeff Heath
 Bob and Andrea Mooney
 Brenda and Lon Sears
 Charlie and Claire Pineda
 Chuck and Michelle Nichols
 Dave and Carolyn Carlson
 Jason Davis and Kellie Lisi
 Kate and Eric Waggoner
 Kathy and Dirk Hogue
 Kris Ericson
 Les Anderson
 Marcia and Bill Smith
 Mike and Connie Burris
 Nathan and Laura Cooper
 Randall Toney and Koren Holden
 Robert and Ann Erickson
 Ron and Nancy Bock
Mt. Princeton
\$5,000-\$9,999
 Bob and Margie Dugan
 Brad and Carissa Nietfeldt
 Carl and Emily Sauey
 Cheryl Jebesen
 Cynthia A Manery Loving Trust, Stephen Gansen, Trustee
 Dave and Nellie Jarvis
 Dave Young
 David and Edie May Phillips
 Janet and Scott Harrison
 Janice Ehlers
 Jim and Carol Reppert
 Karen Smith
 Mark and Carla Ewing
 Miles and Kim Brown
 Paul and Kathy Edstrom
 Phil and Traci Dorth
 Shelly and Gerry Clemen
 Steve Jurrens
 Tom and Alison Bucket
 Vicki and Christian Lieber
Crestone Peak
\$10,000-\$14,999
 Katie Dugan
 Steve Flessner
 Tara and Chad Sawinski
Pikes Peak
\$15,000-\$19,999
 Mike and Bonnie Ensrude
 Estate of Ruth Ericson
 Dawn and Brent Meyer
Mt. of the Holy Cross
\$20,000 plus
 Wayne Arden
 Mike and Julie Bock
 Bill and Charlotte Dausse
 David and Sharon Henneke
 Randy and Lisa Schrader
 Bob and Joyce Witte



Rainbow Trail

2024 Events Calendar

- May 24-27.....Memorial Day Work Weekend
- May 27- June 8.....Staff Training
- June 9- August 18.....Summer Camps
- August 30 - September 2.....Labor Day Family Weekend
- September 19-20.....Men's Fly Fishing Retreat
- September 27-29.....Womens Retreat
- October 5.....Grace Race
- October 11-13.....Confirmation Retreat
- October 18-20.....Fall Ambassadors Retreat
- November 22-24.....Senior High Retreat
- December 6-8.....AdventFest

www.rainbowtrail.org

GIFTS IN MEMORY & HONOR

- In memory of Kelsey Rohrbaugh
Anonymous
- In memory of Grandma Ruth Ericson
Eric Ericson
- In memory of Kitty Jarvis
John and Lois Greer
Raenette and Gary Hamann
- In memory of Greg Eklund
Kim and John Olson
- In memory of Eleanor Chapin
Linda and William Carlisle
- In memory of Birgitta Erling
Maria Erling and John Spangler
In memory of Ellie Arden
Wayne Arden
- In memory of Caroline John
Stanley and Evelyn John
- In honor of Chad and Jodi
Rissetter
Gary and Marti Jensen

2024 Thrivent Choice Donors

- Alan and Susan Shelinbarger
- Annette Kvamme-Leijen and Ernest Leijen
- Bill and Charlotte Dausses
- Bob and Margaret Curnow
- Bob and Margie Dugan
- Bob and Renee Wade
- Bonnie Brandt
- Brad and Roseanna Doty
- Brelynn Dumortier
- Brian and Marian O'Connor
- Bruce and Laura Guthals
- Bruce and Nancy Albertson
- Caitlin and Josh Nelson
- Calvin Rogers
- Carol and Ken Yoss
- Ceryl Masters
- Ceryl Werner
- Chris and Gail Tucker
- Christina Brown-Erickson and Steven Erickson
- Chuck and Gayle Newell
- Clay and Laurie Mohler
- Curtis and Suellen Kelley
- Damon and Anna-Marie Larson
- Dan and Marcia Oltrogge
- Daniel and Diana Breed
- Dave and Nellie Jarvis
- David and Linda Higbea
- David and Rebecca Kleen
- David Koenig
- David Steinhauer
- Denise Nelson
- Dyann Flickinger
- Ed and Janice Norden
- Emmett and Katherine Cruson
- Eric and Pam Gohl
- Eric Park and Kathy Kowalczyk
- Erin and Jason Jacob
- Eunice Mansfield
- Fred and Audrey Hansen
- Fred and Nancy Dorth
- Gail and Craig Bagenstos
- Gail Schultz
- Gary and Kay Schritter
- Gary Hanstein
- Gene and Angie Youngmann
- Gene and Marilyn McConnell
- Glenda Kelly
- Gordon and Carla Daniels
- Greg and Barbara Haschke
- Greg and Christine Kleen
- Greg Ronning
- Gretchen and Chad Anthony
- Harold and Susan Stitt
- Heather Campbell and Jerry Landeck
- Ina Kay and Tom Devers
- James Myra
- Jane and Curtis Bonsor
- Jeanne and Martin Dallman
- Jeanne and Patrick McClure
- Jeff and Tricia Lindsey
- Jeffrey Palmie
- Jim and Cindy Britton
- Jim and Janice Mulvany
- Jim Ruden
- Joe and Christy Peters
- Jon and Jo Powers
- Jon and Karen Morgenthaler
- Josh Olson
- Joshua Nickell
- Judy Leiseth
- Julie Horan and Erik Peters
- Karen Smith
- Kayla Aspeslagh
- Ken and Linda Hultman
- Kenneth Eastman
- Kent and Elizabeth Lund
- Kevin and Darlene Rohrbaugh
- Kevin and Michelle Dempsey
- Kevin and Nette Werling
- Kim and John Olson
- Kurt and Darlene Mader
- Kylie Stitt
- Larry and Lavona Brown
- Larry Danielson
- Lia Jeski
- Lisa and Craig Coney
- Lisa Drew
- Lynda Keeley
- Lynne and Bob Hobbs
- Marion Talley
- Mark Kluck
- Marty Bendel Waite
- Marvin and Connie Deines
- Mary and Severt Kvamme
- Meg Mansfield
- Mel and Bonnie Yockstick
- Michael and Sandra Stevrmer
- Michael Howard
- Michael Meyer and Enette Larson-Meyer
- Michael Specht
- Michelle Stone Kraus and Art Kraus
- Mike and Jenel Lundquist
- Nancy Henning
- Nancy Lindsey
- Nathan and Bonnie Palmquist
- Pat and Judy Sorenson
- Pat Holman and Phil Wangberg
- Patric and Judith Sorenson
- Patricia Camp
- Patrick and Emily Meyer
- Paul and Marcia Dahlgren
- Phil and Dee Erlander
- Rebbie Garza
- Richard and Trudy Furbeck
- Rick and Becky Romano
- Rick and Pat Bly
- Rob Maruyama and Roz Kueter
- Robert and Mary Ann Apmann
- Roger and Mary Riekema
- Ron and Janice Baumgartner
- Rosetta Bidne
- Russ and Cheri Sorensen
- Ruth Von Mosch
- Ryan Higbea
- Sarah and David Edeal
- Sharon Stoddard
- Stephanie Sharp
- Steve and Lewanne Graeber
- Steven Palmer
- Susan Behrendsen
- Susan Shapiro
- Suzanne and Ray Peterson
- Tim and Lisa Smith
- Virginia Parks

CONTRIBUTORS

Thank you to the following friends of Rainbow Trail who gave a gift in 2024

- Chris Lovagnini
- David Shroyer
- Dean and Aly Klinkerman
- Del and Cheryl Holz
- Ede Ericson
- Gary and Marti Jensen
- John and Lois Greer
- Joy Hawkins and Randall Clark
- Linda and Stephen Daniel
- Linda and William Carlisle
- Mel and Bonnie Yockstick
- Michael and Ann Tydings
- Tim and Sandra Maxa

GIFTS IN KIND

- Karel and Tom Hemler - 8-2 liter pump hand sanitizer, 9 hot dog roasting sticks
- Anna Krafnick-Lessar and Bobbie Anderson - 6 pairs of work gloves; 9 rain ponchos; office supplies; 12 containers disinfecting wipes
- Bethlehem Lutheran Church, Minnetonka, MN - Bunn Coffee Filters
- Rhonda and Eric Bostrom - Pizza and Drinks for alumni gathering in WA
- Randy and Lisa Schrader - 2019 Ford F150 Limited Truck

ANN (JARVIS) SMITH

MEMORIAL LAND EXCHANGE FUND

- Adrian Miller
- Anonymous
- Bob and Joyce Witte
- Chris and Stephanie Frankle
- Dawn and Brent Meyer
- Edwin and Carleen Woolley
- Mel and Bonnie Yockstick
- Mike and Bonnie Ensrude
- Ray and Nicole' Ferry
- Rosetta Bidne
- Todd Engdahl
- Wayne Arden

DESIGNATED GIFTS

- Cheryl and Stephen Mahon - Soker Campership Fund
- Bert Lager - Soker Campership Fund
- Tara and Chad Sawinski - Staff Hoodies

ORGANIZATIONAL GIFTS

- Thrivent Financial
- Benevity Community Impact Fund
- Community First Foundation

PARTNER CONGREGATIONS

- Abiding Hope Lutheran Church, Littleton, CO
- Advent Lutheran Church, Westminster, CO
- All Saints Lutheran Church, Albuquerque, NM
- American Lutheran Church, Grand Junction, CO
- Ascension Lutheran Church, Colorado Springs, CO
- Atonement Lutheran Church, Boulder, CO
- Atonement Lutheran Church, Lakewood, CO
- Augustana Foundation Fund, Denver, CO
- Augustana Lutheran Church, Denver, CO
- Bethany Lutheran Church, Cherry Hills Village, CO
- Bethany Lutheran Church Foundation, Cherry Hills Village, CO
- Bethany Lutheran Church, Fredericksburg, TX
- Bethel Lutheran Church, Aurora, CO
- Bethel Lutheran Church, Colorado Springs, CO
- Bethlehem Lutheran Church, Longmont, CO
- Bethlehem Lutheran Church, Los Alamos, NM
- Black Forest Lutheran Church, Colorado Springs, CO
- Christ Lutheran Church, Highlands Ranch, CO
- Christ the King Lutheran Church, Durango, CO
- Christ the Savior Lutheran Church, Aurora, CO
- Christ the Servant Lutheran Church, Louisville, CO
- Cross of Christ Lutheran Church, Broomfield, CO
- Epiphany Lutheran Church, Denver, CO
- Evergreen Lutheran Church, Evergreen, CO
- Faith Lutheran Church, Golden, CO
- First Lutheran Church, Colorado Springs, CO
- First Lutheran Church, Longmont, CO
- Gloria Dei Lutheran Church, Wichita, KS
- Good Shepherd Lutheran Church, Glenwood Springs, CO
- Grace Lutheran Church, Colorado Springs, CO
- Holy Cross Lutheran Church, Wheat Ridge, CO
- Holy Ghost Lutheran Church, Fredericksburg, TX
- Holy Love Lutheran Church, Aurora, CO
- Holy Shepherd Lutheran Church, Lakewood, CO
- Holy Trinity Lutheran Church, Littleton, CO
- Immanuel Lutheran Church, Greeley, CO
- Joy Lutheran Church, Parker, CO
- King of Glory Lutheran Church, Arvada, CO
- King of Kings Lutheran Church, Pueblo, CO
- King of Kings Lutheran Church WELCA Pueblo, CO
- Lord of the Hills Lutheran Church, Centennial, CO
- Lutheran Church of Hope, Broomfield, CO
- Lutheran Church of the Holy Spirit, Centennial, CO
- Mount of the Holy Cross Luth Church, Vail, CO
- Our Savior's Lutheran Church, Greeley, CO
- Our Saviour's Lutheran Church, Ft. Collins, CO
- Peace in Christ Lutheran Church, Elizabeth, CO
- Prince of Peace Lutheran Church, Denver, CO
- Rocky Mountain Synod ELCA, Denver, CO
- Shepherd of the Hills Lutheran Church, Canon City, CO
- South Zumbro Lutheran Church, Kasson, MN
- South Zumbro Lutheran Church WOW, Kasson, MN
- Spirit of the Mountain Lutheran Church, Golden, CO
- St. Luke Lutheran Church, Albuquerque, NM
- St. Paul Lutheran Church, Albuquerque, NM
- St. Paul Lutheran Church, Calhan, CO
- St. Peter Lutheran Church, Greenwood Village, CO
- St. Peter's Lutheran Church, Marble Falls, TX
- St. Philip Lutheran Church, Littleton, CO
- Tabor Lutheran Church, Pueblo, CO
- Trinity Evangelical Lutheran Church, Boulder, CO
- Trinity Lutheran Church, Fowler, CO
- Trinity Lutheran Church, Loveland, CO
- Trinity Lutheran Church, Monument, CO

A different, yet significant way to support the ministries of Rainbow Trail

Needs List



These are essential items needed for our day-to-day operations. A designated monetary gift would certainly be welcome as well. You can bring these items with you any time you come to camp or call us to arrange a drop-off or pick-up. Thank you for your continued support!

- White 20# copy Paper (Laser quality)
- Reams of colored copy paper
- Nalgene Water Bottles (40)
- Masking tape
- Scotch Tape
- Duct Tape
- Packing Tape
- Postage stamps
- 8.5x11 Yellow Tablets
- 8 ft. Rectangle "Lifetime" tables (5)
- Long barreled fire lighters (Bic)
- 9x12 Manila envelopes (no clasps)
- 6x9 Manila Envelopes (no clasps)
- 10x13 Manila Envelopes (no clasps)
- 12 - 5 ft. round white Lifetime tables
- Rain Jackets & Rain Pants
- On-Site and Compass Points Day Packs
- Foam Brushes - 1"
- Paintbrushes - all sizes, inexpensive
- 2 Cases of Lysol or Clorox Wipes
- 5X8 note pads Junior legal

Wish List

These are larger items that we haven't budgeted for, but would love to have. Contact us if you would like to donate any of these items, new or gently used. You can bring them to camp, or call to arrange a drop-off or pick-up. Thank you for your continued support.



- Heavy Duty Cotton Work Gloves
- Industrial Mop buckets (call us first!)
- Sturdy Wheelbarrows
- New Queen sheets - white
- New Queen mattress pads
- New 3-piece towel sets (20)
- Shark Navigator vacuums (4)
- Free Standing Space Heaters (3)
- Dish Cart
- Phillips 60W & 100W Dimmable LED Bulbs
- Podcast Gear
- Skid Steer Tire Chains
- Used Vehicle For Day Camp
- Apple Studio
- Commercial Paper Shredder

Shop Online

It's easy to give a gift from RTLC's Needs or Wish Lists online. We've pre-selected items that we are looking for and provided links straight to great deals that we've found. There is also a Compass Points specific list online. You can even ship directly to us!

www.rainbowtrail.org/donate/needs-and-wish-list

Administrative Office

- 107 S. 9th Street, Suite B
- Canon City, CO 81212
- Phone: 719-276-5233
- Fax: 719-276-5235
- Office Hours: 9 am - 5 pm



Camp Office

- 3056 County Road 198
- Westcliffe, CO 81252
- Phone: 719-942-4220
- Fax: 719-942-4000

Full-Time Staff

- Dave Jarvis, Executive Director.....dave@rainbowtrail.org
- Aurice Worley, Bookkeeper.....accounting@rainbowtrail.org
- Tricia Lindsey, Executive Assistant/Registrar.....info@rainbowtrail.org
- Will Johnson, Director of Compass Points & Day Camp...will@rainbowtrail.org
- Delta Wise, Director of Retreats.....delta@rainbowtrail.org
- Cam Regennitter, Director of On-Site & Bridging Borders.....cam@rainbowtrail.org
- Sands Simonton, Director of Site & Facilities.....sands@rainbowtrail.org
- Chris Seaman, Food Service Manager.....chris@rainbowtrail.org

Board of Directors

- President.....Michelle Okes, Bethany Lutheran, Denver, CO
- Vice President.....Austen Smith, Lafayette, CO
- Secretary.....Brad Doty, St. Philip Lutheran, Denver, CO
- Treasurer.....Bill Ernstrom, Faith Lutheran, Golden, CO
-Phillip Dorth, Bethany Lutheran, Denver, CO
-Sandy Elvington, Cross of Christ, Broomfield, CO
-Chris Lieber, First Lutheran, Colorado Springs, CO
-Stephanie Lord, Christ The Servant Lutheran, Louisville, CO
-Julie Miller, Bethany Lutheran, Denver, CO
-Rev. Jane Jebsen, Faith Lutheran, Golden, CO
-Rev. Nicolé Ferry, Bethlehem Lutheran, Los Alamos, NM

We make every effort to list each donor, but mistakes do happen.

If we have inadvertently omitted your name or listed you incorrectly we apologize. Please call us, 719-276-5233, and let us know so that we can make corrections.