



# Rainbow Reflections

BULK RATE  
U.S. POSTAGE  
PAID  
PERMIT #5377

Lutheran Outdoor Ministries of the Rockies  
**Rainbow Trail Lutheran Camp**  
107 South Ninth Street, Suite B  
Canon City, Colorado 81212

Volume 35, Number 2 Spring 2023

Rainbow Trail is operated and maintained under authority of a USDA Forest Service Special Use Permit. Rainbow Trail is located in the San Isabel National Forest, USDA.

## EXPANDING THE PARTNERSHIP RTLCL Adds Both Day Camp and Summer Offering to the Family Camp Partnership with Joshua Station

In August of 2022, Rainbow Trail began a new partnership with Joshua Station ministries. Joshua Station provides transformational housing for those that have experienced homelessness. It is a two-year program where families are provided with housing and a mentor/coach during their time at Joshua Station; in return, they are required to have a job and pay rent, and they agree to take courses such as financial management. When we first approached Joshua Station, we asked if they would be open to sending their youth to RTLCL. They replied, "What about bringing our whole families?" And so, on August 15th, 11 families consisting of thirty people joined our staff for an amazing



three days together. We hiked, built sand castles, wove baskets, wood carved, shared worship and devotions, played games, and created community in a whole new way!

Well, that partnership continues to grow! In 2023, not only will we be offering a full week of camp for these families with close to 60 people expected,

Rainbow Trail summer staff will also be leading a Day Camp this coming July at Joshua Station. We are excited about the possibilities of what this week can be for not only the youth of the Joshua Station families, but also for our summer staff. We believe this will open new doors for us to serve together as their community continues to grow.

Rainbow Trail has also chosen Joshua Station for our summer offering this year. This will allow all of our campers to get to know about the ministry of Joshua Station and contribute to their support. You can bring your monetary offering and put it in the offering jug as you arrive at camp or at closing worship like you have in the past. Please check their website at <https://milehighmin.org/joshua-station/>. If you want to be a part of making sure this week continues long into the future and this becomes a sustainable program, you can make a gift to RTLCL and designate to "Joshua Station programs."

## RTLCL: YOUR HOME AWAY FROM HOME ALL YEAR!

**"This place is beautiful, spiritual, and peaceful in a host of ways."**

Jesus knew the importance of going up the mountain to pray! He intentionally set time apart to retreat from the world to spend time away with his Creator and friends. Taking time away to listen to God's voice in our lives, to reconnect with family, friends, and creation, and to renew ourselves for service in the world is an important piece of the rhythm of a faith-based life. Rainbow Trail offers a variety of programmed and hosted retreats for individuals, families, congregations, schools, and other organizations.

*"You folks are so fantastic, we couldn't possibly have this weekend anywhere else. I have never ever been so well cared for with my food allergies." Retreat guest with Rocky Mountain Storytellers*

Rainbow Trail provides opportunities for group retreating and personal renewal throughout the year. Our programs and facilities can meet the needs of any size group from one person to 150 people. We provide radical hospitality and delicious meals in a comfortable mountain setting, creating the perfect

backdrop for relaxation, learning, and fun. Matthew 18:20 says, "Where two or three are gathered in my name, I am there among them." When we are gathered with other people in a place like camp, it opens up a space for us to share stories and connect as beloved people.

*"There are places in this world where the space between heaven and earth, mundane and holy, common and extraordinary, feels very thin. The Men of Joy Lutheran Church (Parker CO) have found that holy space at Rainbow Trail Lutheran Camp. Each time we have retreated to RTLCL we come home more grounded in our faith and renewed mentally, spiritually, physically." Pastor Rod Hank*

Camp allows people to experience a deeper sense of intentional community and transforms the mind, body, and spirit. Our retreat participants encounter the changing seasons of camp; from the golden aspens in the fall to the snow that sparkles in the midday sun. Through programmed activities led by our highly trained staff - archery, high ropes,

guided hikes, environmental education - our retreat guests have the opportunity to fully explore the outdoors.

*"Perfect camp, perfect venue, great time. The intangibles are amazing!" - retreat guest*

Congregational retreats are important events for the life of any congregation. They offer new ways for a community to engage and get to know one another in a space outside the church building. Congregational retreats emphasize the importance of belonging within the Church, allowing a space that welcomes and affirms individuals into a community. It also creates spaces for current relationships within the congregation to grow deeper. The communal experiences and relational growth that happens during a retreat is then taken down the mountain and brought directly back to the congregational community, inviting the congregation members to engage in more restorative and grace-filled ways. Many congregations have been wrestling

with getting their members reconnected, post-Covid. A retreat at RTLCL is a perfect way to reinvigorate relationships, face to face, in holy space. Retreating can be an embodied practice of disconnecting from distractions and fast paced life, to reconnecting with the self, creation, and God.

*"We decided to host our congregational marriage retreat at Rainbow Trail for multiple reasons. The property alone has majestic views and sets the perfect tone for embracing God's incredible creation, which lends to the most perfect, intimate setting for any event. In addition, the staff made our time special with fantastic service and, of course, fabulous meals. No space or property can compete with Rainbow Trail's beauty and service." Marriage retreat coordinator*

Let us work with you to create a retreat that will send you back down the mountain rejuvenated, refreshed, and ready to engage in the world! Contact Hannah at [hannah@rainbowtrail.org](mailto:hannah@rainbowtrail.org) for more details or to reserve a date!

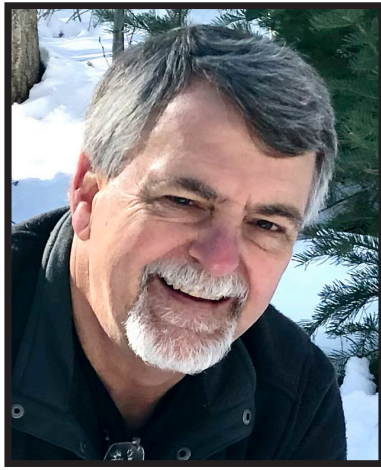
### Rainbow Trail Mission Statement

Rainbow Trail Lutheran Camp creates holy spaces that embody God's radical grace to affirm, empower, and transform all people to be Christ's light in the world

# Trail Boss

By Dave Jarvis - Executive Director

Summer is here! This has been a fast and furious spring. I have been out in congregations doing promotion Sundays and most of our spring retreating has booked the weeks following Easter. So, there is a lot happening right now! We are training our high ropes people at our site in early May, we are getting our vehicles ready to go for Day Camps, and Memorial Day Work Weekend is super full with over 110 people and with exciting projects to improve our site. We are purchasing lots of cool new gear for Popshop. And the late Spring snows are setting us up for a summer full of singing around campfires. There is excitement for this ministry and for the possibilities of what this summer will hold!



Registrations have been very strong for this summer. Nine of our ten on-site weeks of summer camp are full with open spots only in week #1 (Junior High), Intro #2 and #3, and the open Junior High and Senior High Compass Points trips. There are a total of 80 open spots left for the whole summer! Don't miss out on the chance to be at camp with our great staff. If you are considering registering your child for camp, know we have camperships available to help. We know things are still not 100% back to normal for everyone. This is exactly why we have campership funds. If finances are an issue, email me and let's talk. Don't let money be the reason for not coming to camp. We have faithful donors that give specifically for camperships. There are no forms to fill out, and you don't need to share any private information. Take advantage of this opportunity to help your child have the best week of their summer at Rainbow Trail!

Our summer staff will soon be here! Our Directors arrive on Monday, May 22nd and the rest of our ministry team arrives on May 29th. We are so excited about this team and all they will have to offer our campers. In a time when many other camps are still struggling to fill their staff, we had an amazing process and found fabulous candidates to fill our entire ministry team. There are many wonderful returners that you know and love. There are also a great group of amazing new folks that you will fall in love with as well. Over 60% of this staff is from the Rocky Mountain Synod. One other interesting fact is that 46 of our 65 summer staff have been RTALC campers at some point in their growing up. We began the seven-week online portion of our training with this crew the last week of March and will complete their training with two weeks of in-person training upon their arrival for summer. Please keep this team in your prayers as they prepare for this summer. May God use them in amazing ways this summer!!

The Land Exchange is moving toward the home stretch! The public notice for comment concerning our land exchange will be published in the newspapers and sent to pertinent entities by mid-May. We are finalizing the conservation easement deed, the field work for all of the required environmental studies will take place on both our current site and the Locke Park property, and appraisals of both properties will take place in late August. Our Board is currently identifying a site designer to work with us to develop a new site master plan for our soon-to-be larger site. We are still looking at a 2024 completion of the land exchange! There are still opportunities to support the land exchange. If you would like to help with this project, mark your special check or online gift "Land Exchange." We are equipped to take stock gifts as well. I'd be happy to talk with you about the details! We will own our site and it will be the biggest celebration when that happens!

We continue to need your support for this ministry through prayer, through your gift of time and energy, and through your financial gifts. With your partnership, we are able to hire the finest staff, provide excellent facilities, and create a safe place for people to grow in Christ. I continue to be amazed and humbled by the financial support we receive for this ministry. I hope you know how much your gifts are appreciated. It is through your support that we are able to do things that we could have only imagined. Through the work of over 110 enthusiastic volunteers that join us Memorial Day Work Weekend, we figure that we are making about \$50,000 of improvements to our site every year for a fraction of that cost. Major projects for this year's Memorial Work Weekend include new windows in the main level of Columbine Lodge, log oiling the exterior of the pavilion, remodeling the interior of both sides of the showerhouse, new porches and decking on the Geranium and Shooting Star cabins, a new IAM on the mall, updating the bunk rooms in Eagle Peak Lodge, installing a chimney for the woodburning stove in Juniper Lodge, and painting the exterior of Aspen dining hall. There are so many ways to support this ministry. Gifts of all sizes, large and small, make this ministry run. Thanks for believing in the power of this ministry!

I'm so ready for this summer! I just came back from the Youth Ministry Summit at camp and we commented how it already felt like summer out there. Know that we overjoyed that we get to serve you and your children again this year. Thanks for the blessing of serving you... this is summer #35 for me at this sacred place. I can't wait! See you soon!

Until next time...

**ORDER RAINBOW TRAIL BLEND FOR YOUR CHURCH!**

Tired of Folgers? You can order 5 pound bags of delicious, fresh-roasted, whole bean or ground Rainbow Trail Blend coffee online! What's even better is that all profits of RTALC's unique coffee blend provide funds for kids to come to camp! Start ordering delicious coffee with a purpose for your congregation today by going to [shop.rainbowtrail.org](http://shop.rainbowtrail.org)!

# COMPASS POINTS OPEN TRIPS!

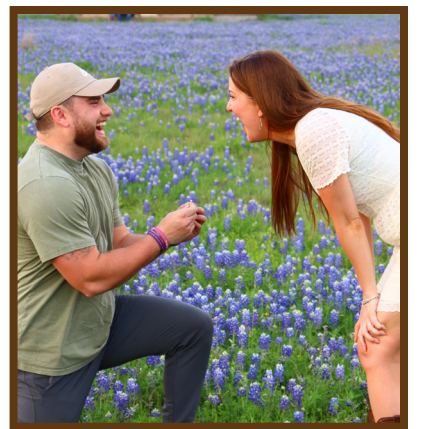


In an effort to create more opportunities for individuals to come to camp, we created open sign up trips for our Compass Points High Adventure Program! These open trips are a great way for kids to get to camp even when on site registration is full. We offer a Junior High Open, Senior High Open, Into the Wild (graduated seniors only), and a Young Adult Open. These trips are open for anyone to sign up, so bring a friend and come adventure with us in the beautiful Sangre De Cristo Wilderness! For more information on our Open Compass Points Trips, go to our website or follow us on instagram @RTLC\_Compass\_Points

# CAMP Vibes

By Cam Regennitter - Director of On-Site & Bridging Borders

As you read this, some of you may notice something fun in the picture to the right. Of course, it wouldn't be right if I didn't start by sharing that Delta and I got engaged! I popped the question down in Texas in a beautiful Blue Bonnet field, and we got to celebrate with Delta's family the whole trip. That was so special since we don't get to see them very often. I am so excited to do life forever with my best friend!



In other news, Summer is here! We are in full swing as we prepare for our most busy season. Staff is hired and currently going through online training, the site is being prepped to host an average of 150 each week, and full-time is getting mentally and physically prepared to do another great 3 months of RTALC ministry. This group of staff has a lot of lifelong campers who are finally old enough to be on staff. I'm excited for the potential and passion they bring. Know your campers this summer are in for something special, and I pray they have some life-changing weeks.

Our partnership with Joshua Station continues to grow and grow. We again will have them up at camp for week 10 this summer. The only difference from last summer is we will have more families, and they will be at camp for the whole week. We are also sending up a day camp team this summer to hang with them at their place and bring Rainbow Trail to those who can't make it up the mountain this summer. We love those families, and Benjamin, one of their directors, has become a good friend to me. Please let us know if you would like to give or get involved with this program! We would love for everyone to be a part of this special relationship.

Bridging Borders is doing it's thing again this summer! We are sending three groups out of Colorado and Minnesota to Appalachia. Appalachia has been our most popular trip recently, and the relationship we have built with ASP has been great. All three groups will be flying and working in Kentucky. All groups will be working on construction projects for low-income family homes. Appalachia has the highest poverty per capita in America, and many of those families cannot afford to get projects done on their homes that need to get done. They are great people who want to know our groups and staff and are very relationship-based, which is our main philosophy at RTALC!

Personally, life is very good. My sister is getting ready to deliver a fresh baby. We don't know if it's a boy or a girl, but either way, Zach and I are prepared to be the best Uncles ever. You best believe little niece or nephew will be so loved, and they will visit up to camp for a second family camp this summer. Delta and I are also moving out and getting our own place. This is my shoutout to 106 and the Bonsers. They have blessed me and my life for the past 3 years. I will miss living with them, but I am so excited for the next step in life with Delta. Love you, boys!

Thanks for reading; make sure to say hi if you make it up the mountain this summer!

**Want To Make A Difference?**

Give a gift to Rainbow Trail and invest in the faith lives of thousands of kids. In today's economy there is no better return!

**Donate** [www.rainbowtrail.org](http://www.rainbowtrail.org)  
Online Anytime

## Simonton Says

By Sands Simonton - Director of Site and

Greetings from the Colorado Rockies! Hopefully, everyone out there is enjoying the relentless snow or the consistent sunshine! Here at camp, it's been consistent sun and winds, unfortunately. Less snow/moisture than usual, which is slightly concerning, but we are more than experienced with fire ban, so bring it on, I suppose. But because camp is super dry right now, keep your fingers crossed for some moisture, whether it be snow or rain!

As I mentioned in the last letter, BC experienced another flood similar to last year. The reconstruction is in full swing. However, it did impact our retreat schedule again, which is a major bummer. All that being said, overall, we have had a good retreat season this year. We recently hired Will Johnson as our new Compass Points and Day Camp Ministries Director. I have known Will for a while now, and it's exciting to know that he has much to give to the organization and those two programs specifically. Sam Walmer is back short term, filling in for our recently departed PGA's Matt and Macy. Quick shout out to them for being here with us and keeping our camp operating through the 9 months of retreats!



Memorial Day is coming up once again, and I can feel the pressure and excitement building. We have lots of awesome projects on the list this year. The following are some of the larger projects. We will rebuild the I AM with new logs we find around the site. The current I AM is the second iteration, if I'm correct. It's about time to revisit it. We'll do a much-needed revamp and touch-up in the Shower House, including new paint, floor repairs, remodeling shower changing rooms, and minor fixture upgrades. Eagle Peak will get hit hard this year with mouse-proofing and ceiling remodels in both rear bunk rooms. I'm maybe the most excited to finish off the last couple of cabin decks, Geranium and Shooting Star. We will have a couple of new signs made for the camp, which is exciting, one will be a second bridge sign, and the other will be a new nurse's station sign. A new Equis cross will be in the works, too, so we can get that worship area back in action. Of course, like every year, we have about a billion other projects and jobs around the site. Plenty of electrical repairs and upgrades, new door jams and handles spread about, forest mitigation, wood chipping, cleaning and organizing, and much more. If you're already signed up, look forward to that. If not, then you should look into it for next year!

I am personally doing great. Still living in Salida and loving every second of it. Kyle, my predecessor, good friend, and also, weirdly, my landlord, is now my roommate, if you can believe it, so that's been pretty awesome. Bode is doing great, especially since I've been bringing our old pal Avery (brown dog) up to camp with me every day to join him. My family is all doing great. My parents will be joining us for Memorial Day again this year which is always exciting for me. I've been enjoying my time at home, trying to get as many walks in and restaurant trips as possible in preparation for camp all summer, hah! I hope everyone reading this is also doing well and preparing for a summer of great memories and community. I can't wait to see all of you when you arrive. Take care

-Sands

## Thank You, Macy and Matt!



We are so thankful for our gifted 2022-2023 Program Assistants!! Macy Kennedy and Matt Chapman both joined us in the fall. They helped plan and implement our Confirmation and Senior High retreats. They both intentionally welcomed our guests and created relational spaces. We are grateful for their curiosity, creativity, and enthusiasm wonder they added to our team! They both left Rainbow Trail in April to serve in full time programming positions. Macy will be serving at Luther Springs in Florida and Matt will be serving at Luther Ridge in North Carolina. Our Program Assistant experience is designed to equip and empower young adults interested in pursuing full time jobs in outdoor ministry. Although we had to say goodbye earlier than planned, we are so proud of Macy and Matt! Macy and Matt led with grace and enthusiasm, making sure our retreat guests experienced radical hospitality. Each one has made an impact on Rainbow Trail!

We wish Macy and Matt the best of luck as they step into full time ministry. May God go with the two of you as you engage in the world as beloved children of God!

## Chris' Corner

By Chris Seaman - Food Service Manager

Hello to my RTLC Family!

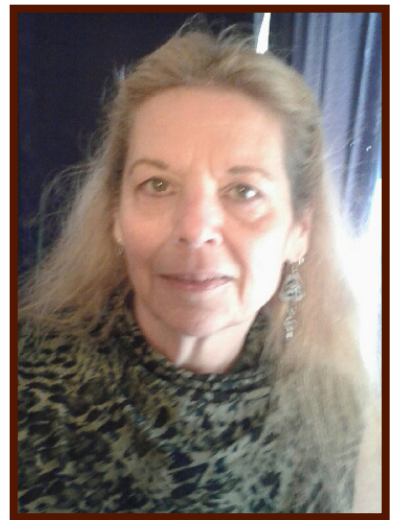
As I sit at my desk looking out the window, there is beautiful snow falling! I can say that because we didn't get hardly any snow here at Camp! I know that a lot of you have had more than your share of the white stuff!

Have you checked out our Summer Staff yet? I can't wait for them to arrive! It never ceases to amaze me how quickly the time passes from retreat season to summer again! We have been busy with retreats this Spring. Hannah, you keep doing what you do so well! I have my kitchen crew from last year all returning. We are gonna rock the kitchen! I really hope you all have added us to your summer plans! My life is going well. I thank the Lord everyday for the many blessings he has bestowed upon me. I am living and loving my best life ever!

So you can see all the beautiful people we have on staff! So until next time, ALWAYS REMEMBER... GOD IS GREAT!!!

Love,

Chris



## Great Ways To Continue To Support RTLC and our Ministries

The support of our donors is key to our ministry thriving and growing. There are a multitude of ways that you can give to this ministry. Stocks, checks, online, and gifts to specific projects like the land exchange or camperships are just a few. However, there are some other tools available of which you may not be aware.

If you own an IRA and are over the age 70 1/2 you may be eligible to make a Qualified Charitable Distribution (ie a contribution to RTLC) directly from your IRA and not include the amount given as subject to income tax. Because of recent law changes, it is always good to consult your tax advisor, but if you are eligible for this, it is a very good deal!

Donor Advised Funds (DAFs) are tax-advantaged investment accounts used for charitable giving. You can fund a DAF with cash or other assets and take a tax deduction for doing so. Usually people opt to contribute their appreciated investments so they don't have to face the tax consequences of selling it themselves. Once inside the donor-advised fund, your contributions continue to grow tax-free until you elect to issue a grant to the IRS-approved charity of your choice.

The beauty of donor-advised funds is they're available to anyone. Donor-advised funds are "designed to be a simple, turnkey way to execute your philanthropic wishes, whether you're giving \$500 or several million." You can give as much or as little (as long as it's at least \$50) as you want to one charity or dozens whenever you choose. It's for this reason that Van Sant calls donor-advised funds "flexible philanthropy."

Take advantages of these tools to help our ministry grow. Talk with your financial advisor for more details. Or contact Dave at dave@rainbowtrail.org and he can put you in contact with someone that can help.

## Save The Date: Colorado Gives Day for 2023

Support RTLC on the 14 th Annual Colorado Gives Day! Save the date! On Tuesday, December 5, 2023. Coloradans will come together again to raise millions of dollars for nonprofits like Rainbow Trail. Last year, a remarkable \$76 million was distributed to 3,381 Colorado nonprofits. RTLC raised an amazing \$139,021 in that 24-hour period. With the support received in 2022, we have set a goal for 2023 of \$110,000! All funds raised will go towards our Annual Fund. We need a great Colorado Gives Day to end the year strong. Also, we are still in the middle of the land exchange process and some people have shifted their annual fund donations towards that Capital appeal. We still need our annual funds to sustain our day-to-day operations. Mark your calendars and make a difference!



# Now THIS is What You've Been Waiting for...



**Beka Gershenoff**  
Bridging Borders Director  
Wartburg College  
Urbandale, IA



**Eric Jacob**  
Counselor  
University of Nebraska Lincoln  
Parker, CO



**Abby Blom**  
Counselor  
California Lutheran University  
Parker, CO



**Zoey Moser**  
Bridging Borders Director  
University of Nebraska-Lincoln  
Lincoln, NE



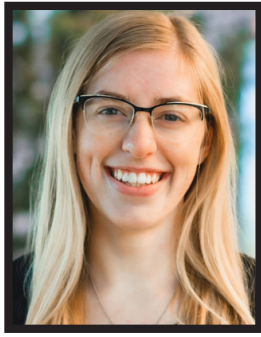
**Sara Larson**  
Bridging Borders Director  
University of Northern CO  
Greeley, CO



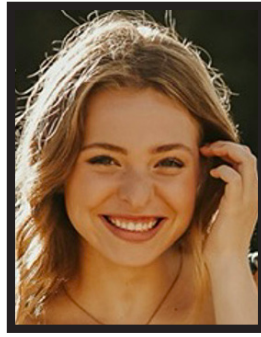
**Sawyer Smith**  
Camphand  
Niwot High School  
Erie, CO



**Anna Saathoff**  
Maintenance Assistant  
Colorado State University  
Pueblo, CO



**Claire Fisk**  
Support Staff Director  
Sterling College  
Denver, CO



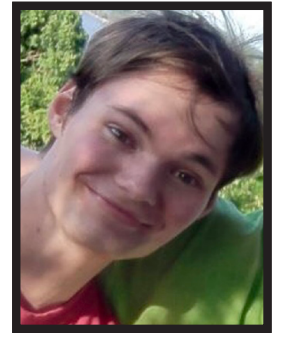
**Maddie Parker**  
Counselor  
Regis University  
Millstadt, IL



**Jay Lewer**  
Compass Point Director  
Carthage College  
Waseca, MN



**Macy Pedersen**  
Bridging Borders Director  
Colorado State University  
Eden Prairie, MN



**William Dohle**  
Counselor  
Pueblo Community College  
Pueblo, CO



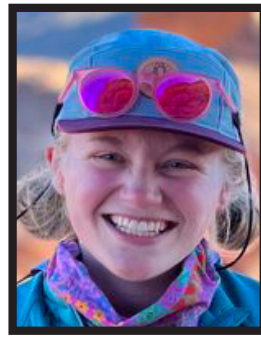
**Kobey Mojzis**  
Counselor  
Belmont University  
Millstadt, IL



**Annika Buhr**  
Assistant Cook  
Colorado State University  
Greenwood Village, CO



**Brynn Harnett**  
Counselor  
Drake University  
Greenwood Village, CO



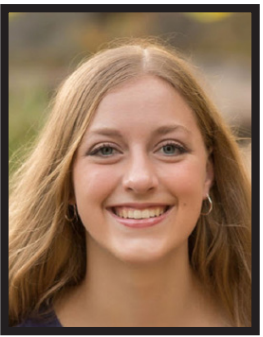
**Kelsey Oman**  
Ropes Coordinator  
Winona State University  
Deer Park, WI



**Caitlin Panicker**  
Woodcarver  
Bowdoin College  
Broomfield, CO



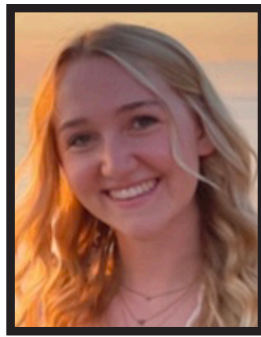
**Talia McLaren**  
Camphand  
Albuquerque High School  
Albuquerque, NM



**Lauren Fisk**  
Counselor  
Northwestern College  
Frederick, CO



**Josie Simonson**  
Counselor  
Clemson University  
Denver, CO



**Lily Jenkins**  
Counselor  
Pacific Lutheran University  
Garden City, ID



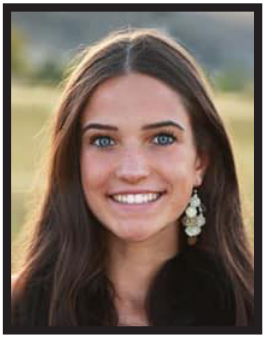
**Justin Kleen**  
Counselor  
University of Nebraska Lincoln  
Fort Collins, CO



**Haylee Hayden**  
Travel Support Director  
University of Northern CO  
Los Alamos, NM



**Kiera Toney**  
Counselor  
University of New Hampshire  
Littleton, CO



**Riley Sawinski**  
Counselor  
University Of Tennessee  
Lakewood, CO



**Ceyna Dawson**  
Counselor  
Colorado College  
Englewood, CO



**Bryan Brown**  
Counselor  
Colorado State University  
Arvada, CO



**Zach Regennitter**  
Ropes Coordinator  
Pikes Peak State College  
Falcon, CO



**Lynne-Estelle Dohle**  
Camphand  
South High School  
Pueblo, CO



**Lindsay Smith**  
Camphand  
Cherry Creek High School  
Englewood, CO



**Amelia Smith**  
Counselor  
Grand Canyon University  
Parker, Colorado



**Ian Smith**  
Counselor  
University of Montana Western  
Parker, Colorado



**Claire Koenig**  
Pottery Instructor  
St. Olaf College  
Centennial, CO



**Emmy Carlson**  
Office Assistant  
Luther College  
Kasson, MN

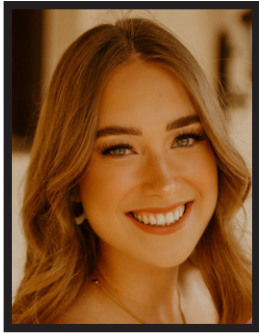


**Jack Dalen**  
Counselor  
Iowa Lakes Community College  
Underwood, IA



**Emmanuel Kermine Jr.**  
Counselor  
Liberia

# ...The 2023 Rainbow Trail Summer Staff



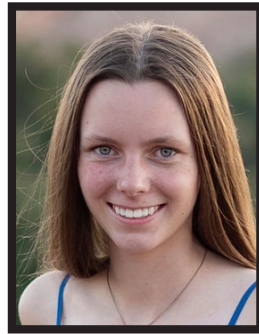
**Annika Bostrom**  
Counselor  
Pacific Lutheran University  
Renton, WA



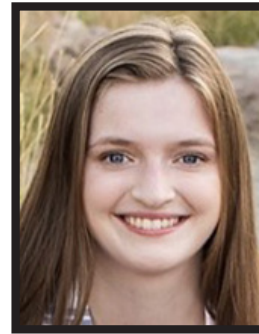
**Grace Smith**  
Counselor  
Colorado Christian University  
Elizabeth, CO



**Finn Windmueller**  
Camphand  
Glenwood Springs High School  
Glenwood Springs, CO



**Kathryn Smith**  
Counselor  
Depauw University  
Englewood, CO



**Emma Graham**  
Counselor  
Purdue University  
Denver, CO



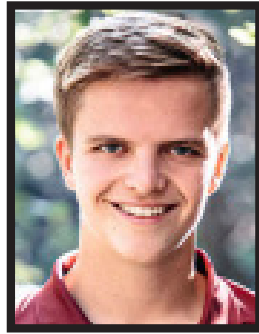
**Maddi Baldwin**  
Counselor  
Whittier College  
Denver, CO



**Addie Flesch**  
Kitchen Assistant  
St. Olaf College  
Englewood, CO



**Kendall Flesch**  
Kitchen Assistant  
Gustavus Adolphus College  
Englewood, CO



**Payton Waggoner**  
Counselor  
Grand Canyon University  
Parker, CO



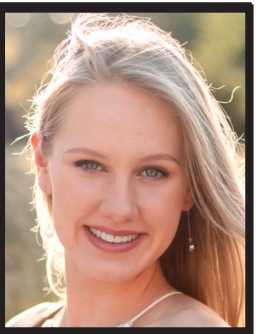
**Carla Herbig**  
Camp Nurse  
Fredericksburg, TX



**Ashley Pedersen**  
Compass Points Director  
Colorado State University  
Colorado Springs, CO



**Sophie Fowler**  
Camphand  
Cherry Creek High School  
Centennial, CO



**Kathleen Thiele**  
Counselor  
Texas Christian University  
Denton, Texas



**Brayden Jacob**  
Counselor  
Grand Canyon University  
Parker, CO



**Hunter Resley**  
Counselor  
Kansas State University  
Highlands Ranch, CO



**Zach Burggraaf**  
Camphand  
Waukee Northwest High School  
Urbandale, IA



**Tait Herbig**  
Summer Facilities Director  
Texas Tech University  
Fredricksberg, TX



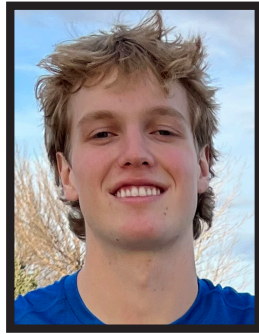
**Atalia Fisher**  
Camphand  
Canon City High School  
Canon City, CO



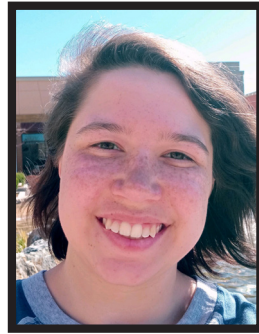
**Max Marold**  
Maintenance Assistant  
Ankeny, IA



**Nic Ferell**  
Compass Points Director  
University of Arkansas  
Fayetteville, AR



**Evan Fowler**  
Counselor  
Colorado State University  
Denver, CO



**Beccs Flerchinger**  
Arts & Crafts Instructor  
Front Range Community College  
Berthoud, CO



**Nick Hawley**  
Videographer  
Grand Canyon University  
Overland Park, KS



**Haydon Everts**  
Counselor  
Texas Lutheran University  
New Braunfels, TX



**Ken Waggoner**  
Counselor  
Colorado Mesa University  
Fruita, CO



**Eliana Tadé**  
Bridging Borders Director  
Gustavus Adolphus College  
Windom, MN



**Will Johnson**  
Director of Compass Points &  
Day Camp Ministries  
Austin, TX



**Cam Regennitter**  
Director of On-Site &  
Bridging Borders  
Colorado Springs, CO



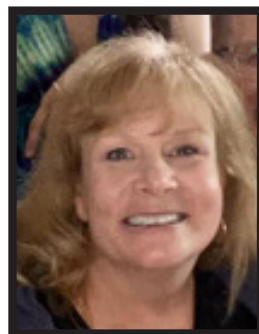
**Hannah Loeffler-Kemp**  
Director of Retreat  
Ministries  
Colorado Springs, CO



**Sands Simonton**  
Director of Site & Facilities  
Salida, CO



**Chris Seaman**  
Food Service Manager  
Westcliffe, CO



**Tricia Lindsey**  
Executive Secretary  
Cañon City, CO



**Aurice Worley**  
Bookkeeper  
Cañon City, CO



**Dave Jarvis**  
Executive Director  
Cañon City, CO

**Nellie Jarvis**  
Intro Camp Director  
Cañon City, CO

## Into The Wilderness

By Will Johnson - Director of Compass Points & Day Camp

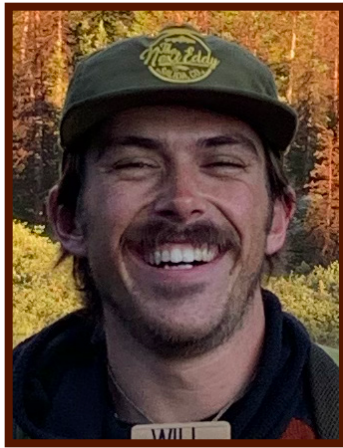
Happy Spring Everyone! It has been a packed spring season as we get prepared for this upcoming summer. Our Compass Points program is prepared to send out 17 trips this year and our guides can't wait to get here! Meanwhile, our Day Camp program is prepared to travel to 33 different congregations around the Rocky Mountain Synod. Lots of great opportunities for ministry this year and we can't wait to see what this summer has in store for us!

Outside of Day Camp and Compass Points, I am currently at my Wilderness First Responder Course here in Leadville, CO! This is an 80 hour course where I am taught by professionals on how to respond to emergencies in the backcountry. This helps in the safety of our program and the training of our guides so we can keep our participants safe and healthy while out on trail!

In between all of this I have been working on expanding Compass Points into the fall and am hoping to create some more unique trips such as a backcountry fly fishing retreat. Follow our Instagram @RTLCL\_Compass\_points for more information and updates!

As always, all are welcome at Eagle Peak Lodge. Come say "hi" when you are at camp this summer! Happy Trails!

-Will



## A Great Way to Support RTLCL: Thrivent Action Teams

Thrivent is offering an exciting way for its members to positively impact organizations like Rainbow Trail through a program called Action Teams. An Action Team is easy to organize. All that has to happen is a Thrivent member identifies a worthy project, finds a group of people to help with the project, and then goes to the Thrivent website and establishes the project in the system. Thrivent will provide a \$250 debit card with starter funds for the project in hopes that it can be used to generate more. For example, if your church wanted to buy RTLCL something off the wish or need list, you could host a breakfast using the starter funds and all the proceeds from your breakfast could be used to purchase that item. Or you could do something similar to raise campership funds for your youth to go to camp this summer. Shepherd of the Hills Lutheran Church in Canon City used an Action Team to host a breakfast and raised over \$1200 for camperships for their youth to go to camp this summer! You can also provide an action team for a work project at camp. The sky is the limit for what projects can be done to help Rainbow Trail. Consider forming an action team and make a difference! Contact Dave Jarvis if you have any questions or want more details!

## MAKE A DIFFERENCE AND GIVE YOUR BUSINESS A SHOUT OUT AT GRACE RACE

Every fall, Rainbow Trail Lutheran Camp hosts its annual Grace Race to help stamp out world hunger. This annual 5k run/walk was started as part of RTLCL's 50th anniversary in 2007, to raise money for the ELCA World Hunger Appeal. The event is held in collaboration with the Rocky Mountain Synod Hunger Network. Over the last sixteen years, the Rainbow Trail community has contributed \$88,633 to the ELCA World Hunger Appeal. But we think we can do more. The 17th Annual Grace Race will be held on Saturday, October 7, 2023. We are aiming for 300 participants for this year's race. We want to send a \$10,000 check to the ELCA World Hunger Appeal!! Another great way to support this event and cause is to advertise your business on the classy Grace Race tech shirts. For a \$300 donation, we will add your company name and logo to the race shirt. There will also be a link for your business off of the RTLCL Grace

race webpage. We'll give your business some great press at the race and you will help make an incredible difference in our world. Contact Dave Jarvis at dave@rainbowtrail.org for more details.



## Choose to Designate your Thrivent Choice Dollars to RTLCL and Make A Difference!

Thrivent Financial for Lutherans has a charitable giving program called Thrivent Choice. Each member is allocated a set amount of money to give to the Lutheran organizations of their choice. Last year, Rainbow Trail received \$28,000 from this program. Our goal for 2023 is \$35,000. We hope that you will designate your allocated dollars to Rainbow Trail Lutheran Camp. You will need to go out to the Thrivent website quarterly to designate your Thrivent Choice dollars. We know that is a lot to remember and we can help. If you will let us know that you have designated your Thrivent Choice dollars to Rainbow Trail, we can send you either an email or a postcard quarterly to remind you to go out and designate your dollars. If you haven't designated your Choice dollars to any organization, just follow the steps below to designate them to Rainbow Trail.

### HERE ARE STEP BY STEP INSTRUCTIONS ON HOW TO DESIGNATE YOUR FUNDS:

#### Over the Internet

1. Log on to [www.thrivent.com](http://www.thrivent.com)
2. Sign in with your username and password or register for an account.
3. Once you have registered and signed in, select the "Direct Choice Dollars" button for Thrivent Choice in the right hand side.
4. In the middle of the next page, type "Rainbow Trail Lutheran Camp" in the "Organization Name" box, leave "City" blank, and click search.
5. Next to our camp name, you will click the "Direct Now" button. You will be able to assign all or part of your Choice dollars to us. You can also set it up so Rainbow Trail continues to get your future Thrivent Choice Dollars as well.
6. Click the "submit" button and your Thrivent Choice Dollars will be sent to our ministry.

#### Over the Phone

1. Call 800-847-4836.
2. Follow the prompts that are given.
3. You will be asked for the last four digits of your Social Security number, then you will be sent through an automated operator system. Our camp is listed as "Rainbow Trail Lutheran Camp."

This is just one more way that you can give to support this ministry.

Encourage your friends that are Thrivent members to do the same! If you have any questions, call Dave at the Canon City office.

## Hanging With Hannah

By Hannah Loeffler-Kemp - Director of Retreats



As I sit on the porch of Columbine, sipping coffee from a red mug and watching the sunrise, I am filled with deep gratitude for the Rainbow Trail community. I want to take a moment to thank all those involved in making our retreat ministry happen here at RTLCL - the full-time staff, summer staff, volunteers, speakers, worship leaders, adult leaders, partner organizations and congregations, and participants.

There has been transition happening on our full-time team as we said good-bye to Maggie and hello to Will. I am thankful for Maggie's gifts and ministry she shared with

this place. She is a dynamic and compassionate leader, who inspired and intentionally engaged with her staff. She has been my home away from home! I am looking forward to witnessing the unique gifts Will will bring to our team.

It's hard to believe the retreat season is beginning to wrap up as we anticipate summer! We've hosted around 30 retreat groups, amounting to over 970 people since the 2022 summer season ended. Our ministry at camp truly never stops!

In February, Mason and I took a little weekend trip to Portland, Oregon. We had fun exploring local restaurants and shops, as well as attending a Trailblazers basketball game. I was invited to participate in a weekend retreat with ELCA Young Adults in Global Mission to support the incoming cohort of volunteers. It was a joy to spend time with young people discerning a call of global service and accompaniment. It reminded me of the important work camp does of equipping and empowering our young adult leaders to transform the world!

May you find peace as we transition to the summer season. I hope to see you on the mountain this summer!

-Hannah

## 2023 Fall & Winter Retreats

Rainbow Trail's Retreat program aims to give everyone who steps onto our site a space to relax and connect with God and others. Experience radical hospitality, serene surroundings, delicious meals, and loving staff during your time on the mountain. With an elevation of 8,500 feet, RTLCL's location offers amazing views, and the rural setting allows for breathtaking starry nights. We value quality in every sense of the word, and strive to go the extra mile any chance we get for the sake of your experience. We can't wait to serve you and share God's love on the mountains!

#### Men's Fly Fishing

September 21-24

#### Women's Retreat

October 6-8

#### Confirmation

October 20-22

#### Registration is now open for our Fall Retreat Season!!

Confirmation and Senior High Retreat registration opening soon.

#### Fiber Arts Retreat

November 2-5

#### Senior High Retreat

November 17-19

#### Retreat Adventfest

December 1-3

# TRAILBLAZERS & PATHFINDERS

The following individuals are members of the 2023 Trailblazers and Pathfinders Club. Trailblazers is an annual giving club that keeps the ministry at Rainbow Trail alive and growing. To join, contact Dave 719-276-5233 or check out the "Donate" tab on our webpage at [www.rainbowtrail.org](http://www.rainbowtrail.org). Many thanks to the

following supporters of Rainbow Trail!

**Base Camp Club**

- \$120-\$249**  
 Allan Schritter  
 Amy and Alan Schmuck  
 Andrew Miller  
 Angie O'Rear  
 Antje Sliger and Sabine Shaffer  
 Barbara and Chuck Exley  
 Ben and Jordan Jarvis  
 Ben and Katie Rude  
 Bob and Linda Morton  
 Bonnie and Jim Klamerus  
 Brad and Brooke Shannon  
 Brad and Kathleen Chewakin  
 Brad and Patty Taylor  
 Brian Bonser  
 Bruce and Laura Guthals  
 Carrie and Andrew Stephens  
 Christen and Andrew Brown  
 Chuck and Gayle Newell  
 Clarence Versluys  
 Corey and Katie Okes  
 Daniel and Diana Breed  
 Dave and Betty Begeal  
 David and Ingrid Waggoner  
 David and Janet Kennedy  
 David Kumpe and Rosemarie  
 Wipfelder Kumpe  
 David Miller and Anne Wenzel  
 David Shroyer  
 Deborah and Jerry Yirku  
 Del Holz  
 Dena Richter  
 Diane and William Duty  
 Don and Carol Troike  
 Eric and Carolyn Gustafson  
 Eric Peters and Julie Horan  
 Gary and Joy Symes  
 Gene and Angie Youngmann  
 Heather and David Kinz  
 Herbert Korff  
 Jacob Dolan and Becca Sager Dolan  
 James and Candy Hersch  
 Jean Larson  
 Jennifer Newman and David Engel  
 Jeremy Miller  
 Jessica and Jesse Reeves  
 Jessica and Todd Doyle  
 Jim and Bonnie Shumaker  
 Joanne and Jim Dumler  
 Joyce Mills  
 Judy Russell  
 Karel and Tom Hemler  
 Karen Lim  
 Kari Gildseth-Brennan  
 Kathy and Paul Casey  
 Katie and Daniel Scherr Bock  
 Keith and Tammy Wetter  
 Ken and Mary Sorenson  
 Kim and Jim Gonia  
 Kitty Jarvis  
 Landon Harman  
 Laura Harney and Eric Sollenberger  
 Linda and Stephen Daniel  
 Lindsay Lafferty  
 Lisa Eberts  
 Mandy and Ryan Sevier  
 Marilyn Schlage  
 Marita and Ron Hollis  
 Mark and Angie Hartman  
 Mark and Julie Stover  
 Mark and Pegi Crates  
 Martha and Clint Calvert  
 Marty Bendel Waite  
 Mel and Bonnie Yockstick  
 Meralee and Michael Hoffelt  
 Nancy Helton  
 Patti Nelson  
 Paul and Marcia Dahlgren  
 Phil and Dee Erlander  
 Randy Adolf  
 Rebecca and Chad Moravec  
 Richard and Valerie Watkins  
 Robert and Denise Tristano  
 Roberta Wentworth  
 Samantha Johnson  
 Sara and Daniel Romanski  
 Sarah and Kevin Smith  
 Sharon and Bruce Stokes  
 Steve and Judy Gunnlaugsson  
 Steven and Janet Iona  
 Sue Michel  
 Sue Samuelson  
 Sue Satter  
 Susan Pfabe-Wiggans and Scott  
 Wiggans  
 Swan Ellert  
 Terry and Holly Wubbena  
 Terry and Leanna Schritter  
 Thulisiwe and Charles Beresford  
 Tiff and Kevin Roiseland  
 Victor and Lois Hoops  
 Virginia Crow  
 Wayne and Joan White
- Rainbow Lake Club**  
**\$250-\$499**  
 Alissa and Josh Plumley  
 Andrea Doeden  
 Bert and Dolly Lager  
 Bob and Janelle Stover  
 Bryan and Denie Nordin  
 Caitlin and Josh Nelson

- Carl and Gail Schurman  
 Cathy Goodman  
 Cherry and Ben Carpenter  
 Cheryl Almquist  
 Cheryl Masters  
 Craig and Beverly Essex  
 Craig Kelly  
 Damon and Anna Marie Larson  
 Daniel Hanson and Aimee Lenth  
 Daniel Kirschbaum and Jonny Tip-  
 petts  
 Dave Gunnlaugsson  
 David and Carla Herbig  
 David and Michelle Louis  
 David Dorow and Wendy Clark  
 Dawn and Shannon Ambrosio  
 Deborah Wangerin  
 Diane Boldt and Paul Hurcomb  
 Donna Hayden  
 Elisa and Ryan Strickler  
 Elizabeth «Buffy» Nelson  
 Elizabeth and David Bowman  
 Frank and Lorie Eby  
 Garrett and Stacey Strussel  
 George and Linda Deatz  
 Glenn Grandy  
 Greg and Barbara Haschke  
 Ina Kay and Tom Devers  
 Jack and Phyllis Brown  
 Jennifer Duensing-Crosbie and Todd  
 Crosbie  
 Jim and Jann Marie Crock  
 Jim and Pat Speckmann  
 Jim Ruden  
 John and Peggy Harris  
 Jon and Jo Powers  
 Judy Peters  
 June Hartmann and Allan Ochs  
 Ken and Kay Gerhart  
 Kendra and Steve Dunn  
 Kevin and Darlene Rohrbaugh  
 Kevin and Marybeth Barkocoy  
 Lannette Abbey  
 Leonard and Judy Walgren  
 Linda Drury and Drury Family Fund  
 Linda Stuehrenberg  
 Lynn and Pat Trenda  
 Marcia Oppermann  
 Margaret and Norm Aarestad  
 Maria and Richard Smith  
 Marje and Fred Hoppe  
 Mark and Cindy Boatright  
 Mark and Natalie Talley  
 Mark and Ruth Peterson  
 Michael and Sarah Graham  
 Nancy Henning  
 Pam and Dave Challis  
 Payton Waggoner  
 Randy and Gail Mundt  
 Ray and Carrie Harney  
 Robert Lee and Polly Ann Miller  
 Rod and Sharie Schofield  
 Ron and Heather Frost  
 Roxann and Tom Hare  
 Ruth Idler  
 Sean-Casey and Amy King  
 Shelly and Joel Waggoner  
 Steven and Pamela Haigh  
 Susan and Steven Kohuth  
 Timothy and Lucy Elder  
 Todd and Natalie Erickson  
 Trevor Alm
- Eagle Peak Club**  
**\$500-\$999**  
 Adrian Miller  
 Amy and Matthew Pallas  
 Ben and Bev Larzelere  
 Ben and Corliss Wyatt  
 Ben Hogue and Marshall Monda  
 Bradley and Roseanna Doty  
 Carl and Katie Edstrom  
 Carolyn Brink  
 Christina Brown-Erickson and Ste-  
 ven Erickson  
 Christine and Steven Schaeberle  
 Dave and Carol Hartenberger  
 David and Linda Higbea  
 David Lindholm and Kathy Sa-  
 sak-Lindholm  
 Dawn and Joel Thys  
 Eric and Pam Gohl  
 Erik and Kim Williams  
 Gail and Mark Muehlethaler  
 Gary and Patty Bliss  
 George and Nancy Jacobson  
 Greg and Heidi Thiele  
 Greg and Jessica Dorow  
 Greg and Shanna Murrell  
 Hannah Harman  
 Jana and Paul Oman  
 Jeff and Trisha Carlson  
 Jerry and Deb Paul  
 Joel and Carolyn Buck-Gengler  
 John and Karla Balk  
 John and Kathleen Erickson  
 John and Pam Marietta  
 Jon and Kate Palmquist  
 Judy Hagge  
 Julie and Jary Shimer  
 Julie and Ron Skelton  
 Julie and Scott Miller  
 Juliette and David Britton

- Karen Nulle  
 Karen Pffor  
 Kathryn Schmidt  
 Kent and Elizabeth Lund  
 Kim and John Olson  
 Kris and Greg McDaniel  
 Kristen and Mike Saathoff  
 Kurt Maack  
 Larry and Eleanor Bonicelli  
 Larry and Lavona Brown  
 Laura Wouters  
 Leslie Swetnam  
 Lisa Meyerdiorks  
 Lynda Koenig  
 Mackenzie Nading  
 Maren Diercks and Paul Eppard  
 Marianne Woodward  
 Mark and Allison Whitmire  
 Mark and Anne Schwartz  
 Mark Skinner and Lou Ann Cheslock  
 Skinner  
 Meg Mansfield  
 Melissa Beaman  
 Melissa Pffor  
 Mia and Scott Harberts  
 Nick and Jessica Ehrhardt  
 Pat Holman and Phil Wangberg  
 Rachel and Hilton Matthew Holman  
 Randy and Marilyn Williams  
 Richard and Judith Kreiter  
 Rick and Becky Romano  
 Robert Rhodes  
 Roger and Claudia Larson  
 Ron and Jean Bruns  
 Ron and Katy Harder  
 Russ and Cheri Sorensen  
 Ryan and Rianne Anderson  
 Sarah and Geir Ostrem  
 Sarah and Josh Anderson  
 Scott and Kristi Beebe  
 Stephanie and Jeff Smith  
 Stephanie Lord and William  
 McHardy  
 Steve and Nancy Lord  
 Terry and Susan Pletkovich  
 Tim and Deborah Meyer  
 Tim and Jen Walmer  
 Todd and Mary McNeil  
 Tom Stephens and Mary Beth Frede-  
 rick  
 Tom Williamsen  
 Vince and Leigh Felletter  
 Wendy and Glenn Kuzminski
- Challenger Peak Club**  
**\$1,000-\$1,499**  
 Alisa and Jim Thomas  
 Aurice and Bob Worley  
 Betty Kirsebom  
 Charlie and Claire Pineda  
 Cheryl and Stephen Mahon  
 Chris and Stephanie Frankle  
 Dave and Betsy Risendal  
 David and Sharon Henneke  
 Don and Bernie Mathison  
 Elizabeth and Evan Smith  
 Emily and Scott Dalen  
 Gary and Kay Schritter  
 Hanne and Kip Schauer  
 Harold and Susan Stitt  
 Hunter and Janet McDaniel  
 Jeffrey and Liz Thomas  
 Jill and Douglas Monsen  
 John and Kathy Eckhardt  
 Julie and Mike Speck  
 Keli I and Karen Rogers  
 Kevin and Tracey Engelhardt  
 Kristen and Robert Baltrum  
 Liza and Nathan Blom  
 Lorna and Zach Borger  
 Michelle and Dave Okes  
 Mike and Jenel Lundquist  
 Nadia Bolz-Weber  
 Nancy Skinner  
 Nathan Gerhart  
 Orvid Olson  
 Peder and Noel Hansen  
 Peter and Kyra Jensen Meyer  
 Rick and Angela Guinn  
 Rick and Sherry Smith  
 Ron Yergert  
 Ruth Von Mosch  
 Sarah Zinn-Burggraaf and Mike  
 Burggraaf  
 Severt and Mary Kvamme  
 Sophia and Nick Hassman  
 Stanley and Evelyn John  
 Steve Jurrens  
 Steven Gustafson and Beth Knutson  
 Tania Ventura and Jeff Hollender  
 Teak and Clifford Simonton  
 Vernon Pettit  
 Willy and Julie Reusser
- Long's Peak**  
**\$1,500-\$2,499**  
 Abigail and Kurt Mooney  
 Arthur Norman  
 David Lee and Lisa Brown  
 Edwin and Carleen Woolley  
 Estate of Mardella Buhr  
 Fred and Audrey Hansen  
 Fred and Nancy Dorth  
 Gloria and Joel Friesenegger

- Jay Davis  
 Jim and Cindy Britton  
 Judy Leiseth  
 Karen and Richard Stenger  
 Kathy and Craig Twaddell  
 Ken and Sheryl Mielke  
 Kevin and Janet Flesch  
 Kim and Dave Guinn  
 Kristin and Christian Nisonger  
 Kurt and Marsha Ehrhardt  
 Laurie and Clay Mohler  
 Marcia and Bill Smith  
 Marcus and Liz Kochis  
 Marilyn and David Meline  
 Matthew Meline  
 Michelle and Robert Szydlowski  
 Mike and Michelle DiLisa  
 Nathan and Laura Cooper  
 Paul and Karla Schritter  
 R.A. and S.J. Bjarnason  
 Ray and Nicole Ferry  
 Rhonda and William Crossen  
 Roger and Alice Aden  
 Roger and Cheryl Thompson  
 Ron and Nancy Bock  
 Rosetta Bidne  
 Sandra and M. Scott Elvington  
 Sonja Thorwald  
 Stephanie and Andrew Holloway  
 Tom and Shari Gould  
 Vicki and Donald White  
 William Ernstrom and Janie Hanson-  
 Ernstrom
- Mt. Elbert**  
**\$2,500-\$4,999**  
 Ann Hultquist and Roger Loots  
 Annie and Jeff Heath  
 Bob and Joyce Witte  
 Brenda and Lon Sears  
 Carl and Emily Sauey  
 Cathy and Bill Goss  
 Chuck and Michelle Nichols  
 Dave and Carolyn Carlson  
 Don and Lillian Filegar  
 James Myra  
 Jason and Kellie Davis  
 Jeanne and Tim Maloney  
 Kathy and Dirk Hogue  
 Koren Holden and Russell Toney  
 Kris Ericson  
 Les Anderson  
 Lindsey Craver  
 Lisa and Mike Regennitter  
 Mark and Heidi Peterson  
 Mike and Bonnie Ensrude  
 Mike and Connie Burris  
 Paul and Lisa Smith  
 Phil and Traci Dorth  
 Rick and Charlene Coulson  
 Robert and Ann Erickson  
 Ruth and David Ryll  
 Stephanie and Nathan Salazar  
 Susan and Dave Fisk  
 Tom and Alison Buckett
- Mt. Princeton**  
**\$5,000-\$9,999**  
 Austen and Christina Smith  
 Bob and Andrea Mooney  
 Bob and Mindy Marold  
 Brad and Carissa Nietfeldt  
 Dave and Nellie Jarvis  
 Dave Young  
 David and Edie Phillips  
 Dawn and Brent Meyer  
 Janet and Scott Harrison  
 Janice Ehlers  
 Jay and Lorraine Emler  
 Jim and Carol Reppert  
 Karen Smith  
 Mark and Diane Sather  
 Miles and Kim Brown  
 Paul and Kathy Edstrom  
 Shelly and Gerry Clemen  
 Steve Flessner  
 Vicki and Christian Lieber
- Crestone Peak**  
**\$10,000-\$14,999**  
 Cheryl Jebson  
 Finnin Family Charitable Trust, Jeff  
 and Kim Fynnin  
 Holly and Nick Massie  
 Katie Dugan  
 Roger and Mary Riekema  
 Tara and Chad Sawinski
- Pikes Peak**  
**\$15,000-19,999**  
 Bob and Margie Dugan  
 Estate of Ruth Ericson
- Mt. of the Holy Cross**  
**\$20,000 plus**  
 Bock Family Fund, Mike and Julie  
 Bock  
 James Nienaber  
 Janice and Jim Mulvany  
 Kate and Eric Waggoner  
 Orla O'Callaghan and Paul McCarthy  
 Randy and Lisa Schrader  
 Robert and Judi Newman  
 Wayne Arden



# Rainbow Trail 2023 Events Calendar

- May 26-29.....Memorial Day Work Weekend
- May 29-June 10.....Staff Training
- September 1-4.....Labor Day Family Weekend
- September 21-24.....Men's Fly Fishing Retreat
- October 7.....Grace Race
- October 6-8.....Womens Retreat
- October 13-15.....Fall Ambassadors Retreat
- October 20-22.....Confirmation Retreat
- November 17-19.....Senior High Retreat
- Dec 1-3.....AdventFest

[www.rainbowtrail.org](http://www.rainbowtrail.org)

### ORGANIZATIONAL GIFTS

- Anonymous
- Benevity Community Impact Fund
- Expeditors International of Washington, Inc.
- Lawrence CST
- Martin/Martin
- TAI Modern
- Thrivent Financial

### GIFTS IN KIND

- Brad and Carissa Nietfeldt - Mac Notebook
- Computers and Mac Desktop Computers
- Jeff and Tricia Lindsey - 5x7 Frames and Prints for Staff Photo Display
- Judy Leiseth - Various sizes white and colored paper
- King of Kings WELCA - Twin size quilts
- Mark and Heidi Peterson - 8 Yamaha Speakers and Amplifier for Aspen
- Mark and Heidi Peterson - 4 Six-Foot Utility Tables and jewelry making supplies

### DESIGNATED GIFTS

- Anonymous - Soker Campership Fund
- Bert and Dolly Lager - Soker Campership Fund
- Bill and Charlotte Dausses - Drone and Camera Equipment
- Bill and Charlotte Dausses - Bible Study Giveaway Grace Necklaces
- Cheryl and Stephen Mahon - Soker Campership Fund
- Judy Leiseth - Camera in memory of Dennis Bagenstos
- Kim and David Knoche - Soker Campership Fund in memory of Erin Wehofer-Canitia
- Samantha Johnson - Compass Points
- Bock Family Fund - New mattresses

### ANN (JARVIS) SMITH

### MEMORIAL LAND EXCHANGE FUND

- Tabor Lutheran Church
- Edwin and Carleen Woolley
- Rev. Scott and Emily Dalen
- Pastor Paul and Jana Oman

### CONTRIBUTORS

Thank you to the following friends of Rainbow Trail who gave a gift in 2023

- |                             |                           |
|-----------------------------|---------------------------|
| Alan and Susan Shelinbarger | Kirk Dugan                |
| Allegra Reiber              | Kylie Stitt               |
| BettyAnn Arner              | Marilyn Morris            |
| Cam Caulfield               | Patti Schoenfeld          |
| Christy Klemz               | Robin Johnson             |
| Julie Prange                | Tim and Sandra Maxa       |
| Kari and Mitchell Kusek     | Todd and Christine Wright |

### PARTNER CONGREGATIONS

- |  |   |
|--|---|
| Abiding Hope Lutheran Church, Littleton, CO                  | Holy Love Lutheran Church, Aurora, CO                 |
| Advent Lutheran Church, Westminster, CO                      | Holy Shepherd Lutheran Church, Lakewood, CO           |
| All Saints Lutheran Church, Albuquerque, NM                  | Holy Trinity Lutheran Church, Littleton, CO           |
| American Lutheran Church, Grand Junction, CO                 | Immanuel Lutheran Church, Greeley, CO                 |
| Ascension Lutheran Church, Colorado Springs, CO              | Joy Lutheran Church, Parker, CO                       |
| Atonement Lutheran Church, Boulder, CO                       | King of Glory Lutheran Church, Arvada, CO             |
| Atonement Lutheran Church, Lakewood, CO                      | King of Kings Lutheran Church, Pueblo, CO             |
| Augustana Foundation Fund, Denver, CO                        | King of Kings Lutheran Church WELCA, Pueblo, CO       |
| Augustana Lutheran Church, Denver, CO                        | Lord of the Hills Lutheran Church, Centennial, CO     |
| Bethany Lutheran Church, Cherry Hills Village, CO            | Lutheran Church of Hope, Broomfield, CO               |
| Bethany Lutheran Church Foundation, Cherry Hills Village, CO | Lutheran Church of the Holy Spirit, Centennial, CO    |
| Bethany Lutheran Church, Fredericksburg, TX                  | Mount of the Holy Cross Luth Church, Vail, CO         |
| Bethel Lutheran Church, Aurora, CO                           | Our Savior Lutheran Church, Alamogordo, NM            |
| Bethel Lutheran Church, Colorado Springs, CO                 | Our Savior's Lutheran Church, Greeley, CO             |
| Bethlehem Lutheran Church, Los Alamos, NM                    | Our Savior's Lutheran Church, Sioux Falls, SD         |
| Black Forest Lutheran Church, Colorado Springs, CO           | Our Saviour's Lutheran Church, Ft. Collins, CO        |
| Christ Lutheran Church, Highlands Ranch, CO                  | Peace in Christ Lutheran Church, Elizabeth, CO        |
| Christ the King Lutheran Church, Durango, CO                 | Rocky Mountain Synod ELCA, Denver, CO                 |
| Christ the Savior Lutheran Church, Aurora, CO                | Shepherd of the Hills Lutheran Church, Canon City, CO |
| Christ the Servant Lutheran Church, Louisville, CO           | South Zumbro Lutheran Church, Kasson, MN              |
| Community of Joy Lutheran Church, Rio Rancho, NM             | South Zumbro Lutheran Church WOW, Kasson, MN          |
| Cross of Christ Lutheran Church, Broomfield, CO              | Spirit of the Mountain Lutheran Church, Golden, CO    |
| Cross of Hope Lutheran Church, Albuquerque, NM               | St. Luke Lutheran Church, Albuquerque, NM             |
| Epiphany Lutheran Church, Denver, CO                         | St. Paul Lutheran Church, Albuquerque, NM             |
| Evergreen Lutheran Church, Evergreen, CO                     | St. Paul Lutheran Church, Calhan, CO                  |
| Faith Lutheran Church, Golden, CO                            | St. Peter Lutheran Church, Greenwood Village, CO      |
| First Lutheran Church, Colorado Springs, CO                  | St. Peter's Lutheran Church, Marble Falls, TX         |
| First Lutheran Church, Longmont, CO                          | St. Philip Lutheran Church, Littleton, CO             |
| Gloria Dei Lutheran Church, Wichita, KS                      | St. Timothy's Lutheran Church, Omaha, NE              |
| Good Shepherd Lutheran Church, Glenwood Springs, CO          | Tabor Lutheran Church, Pueblo, CO                     |
| Grace Lutheran Church, Colorado Springs, CO                  | Trinity Evangelical Lutheran Church, Boulder, CO      |
| Holy Cross Lutheran Church, Wheat Ridge, CO                  | Trinity Lutheran Church, Fowler, CO                   |
| Holy Ghost Lutheran Church, Fredericksburg, TX               | Trinity Lutheran Church, Loveland, CO                 |
|  | Trinity Lutheran Church, Monument, CO                 |

A different, yet significant way to support the ministries of Rainbow Trail

## Needs List



These are essential items needed for our day-to-day operations. A designated monetary gift would certainly be welcome as well. You can bring these items with you any time you come to camp or call us to arrange a drop-off or pick-up. Thank you for your continued support!

- |                                       |  |
|---------------------------------------|--|
| White 20# copy Paper (Laser quality)  | 6x9 Manila Envelopes (no clasps)       |
| Reams of colored copy paper           | 10x13 Manila Envelopes (no clasps)     |
| Nalgene Water Bottles (40)            | 12 - 5 ft. round white Lifetime tables |
| Masking tape                          | Rain Jackets & Rain Pants              |
| Scotch Tape                           | On-Site and Compass Points Day Packs   |
| Duct Tape                             | Foam Brushes - 1"                      |
| Packing Tape                          | Paintbrushes - all sizes, inexpensive  |
| Postage stamps                        | 2 Cases of Lysol or Clorox Wipes       |
| 8.5x11 Yellow Tablets                 | 5X8 note pads Junior legal             |
| 8 ft. Rectangle "Lifetime" tables (5) |  |
| Long barreled fire lighters (Bic)     |  |
| 9x12 Manila envelopes (no clasps)     |  |

## Wish List

These are larger items that we haven't budgeted for, but would love to have. Contact us if you would like to donate any of these items, new or gently used. You can bring them to camp, or call to arrange a drop-off or pick-up. Thank you for your continued support.



- |   |  |
|---|--|
| Heavy Duty Cotton Work Gloves           | Freezerless Refrigerator               |
| Industrial Mop buckets (call us first!) | Dish Cart                              |
| Sturdy Wheelbarrows                     | Phillips 60W & 100W Dimmable LED Bulbs |
| New Full or single mattress pads        | Skid Steer Tire Chains                 |
| New Queen sheets - white                | Used Day Camp Vehicle                  |
| New Queen mattress pads                 |  |
| New 3-piece towel sets (20)             |  |
| Shark Navigator vacuums (4)             |  |
| Free Standing Space Heaters (3)         |  |

## Shop Online

It's easy to give a gift from RTLC's Needs or Wish Lists online. We've pre-selected items that we are looking for and provided links straight to great deals that we've found. There is also a Compass Points specific list online. You can even ship directly to us!

[www.rainbowtrail.org/donate/needs-and-wish-list](http://www.rainbowtrail.org/donate/needs-and-wish-list)

### Administrative Office

- 107 S. 9th Street, Suite B  
Canon City, CO 81212  
Phone: 719-276-5233  
Fax: 719-276-5235  
Office Hours: 9 am - 5 pm



### Camp Office

- 3056 County Road 198  
Westcliffe, CO 81252  
Phone: 719-942-4220  
Fax: 719-942-4000

### Full-Time Staff

- Dave Jarvis, Executive Director.....dave@rainbowtrail.org  
Aurice Worley, Bookkeeper.....accounting@rainbowtrail.org  
Tricia Lindsey, Executive Assistant/Registrar.....info@rainbowtrail.org  
Will Johnson, Director of Compass Points & Day Camp...will@rainbowtrail.org  
Hannah Loeffler-Kemp, Director of Retreats.....hannah@rainbowtrail.org  
Cam Regennitter, Director of On-Site & Bridging Borders.....cam@rainbowtrail.org  
Sands Simonton, Director of Site & Facilities.....sands@rainbowtrail.org  
Chris Seaman, Food Service Manager.....chris@rainbowtrail.org

### Board of Directors

- President.....Michelle Okes, Bethany Lutheran, Denver, CO  
Vice President.....Rev. Jane Jebesen, Faith Lutheran, Golden, CO  
Secretary.....Rev. Nicolé Ferry, Bethlehem Lutheran, Los Alamos, NM  
Treasurer.....Bill Ernstrom, Faith Lutheran, Golden, CO  
.....Phillip Dorth, Bethany Lutheran, Denver, CO  
.....Austen Smith, Lafayette, CO  
.....Rev. Brad Doty, St. Philip Lutheran Church, Littleton, CO  
.....Sandy Elvington, Cross of Christ, Broomfield, CO  
.....Chris Lieber, Ascension, Colorado Springs, CO  
.....Diana Linden-Johnson, Synod Liaison

We make every effort to list each donor, but mistakes do happen.

If we have inadvertently omitted your name or listed you incorrectly we apologize. Please call us, 719-276-5233, and let us know so that we can make corrections.