



Rainbow Reflections

BULK RATE
U.S. POSTAGE
PAID
CANON CITY, CO
PERMIT #30

Lutheran Outdoor Ministries of the Rockies
Rainbow Trail Lutheran Camp
107 South Ninth Street, Suite B
Canon City, Colorado 81212

Volume 33, Number 2 Spring 2021

Rainbow Trail is operated and maintained under authority of a USDA Forest Service Special Use Permit. Rainbow Trail is located in the San Isabel National Forest, USDA.

Bristlecone Lodge Is Ready To Roll!

A Year of Renovation has Produced A Wonderful Home For RTALC Retreat Ministries

Bristlecone Lodge, our main retreat lodge, has been a part of Rainbow Trail's ministry for over 40 years. Built in 1979, this lodge has served us well as our main retreat center as well as summer housing for our summer staff. But 41 years of use had taken its toll. The Board made the decision that it was time to renovate the building affectionately known as BC.

The renovation of Bristlecone Lodge began in January of 2020 and we knew the timeline was going to be tight to have the project completed by summer. As the spring progressed, two things became evident: the construction would not be completed by summer and this had become the perfect time to do this renovation. Because we had no retreats after March, and that construction workers were considered essential workers, the renovations continued through the spring and through the summer. Construction was completed in September and we were able to host a few small groups in early fall before we closed for the remainder of the year.

The entire building was gutted and taken back to studs. The bathrooms were reconfigured to allow for a larger shower. Sinks have been added to every guest room



so you can brush your teeth before bed and not have to wait on the bathroom. Recessed canned lighting has been installed in all of the living spaces.

To walk in the BC now, it feels like a brand new building. New carpet, new drywall, and fresh paint are throughout the

building. The main room of Bristlecone Lodge has been transformed with new wood floors, updated lighting, new hand rails, new furniture with an area rug, and a new coffee bar. The upstairs kitchen has been converted to a snack kitchen with a refrigerator and microwave, and a linen closet as well as

a new washer and dryer have been added in an enclosed space. Both of the large bunk rooms upstairs have sleeping for 11 people and each has two sinks, two toilets, and showers.

This project has been very similar to buying a new home. Completing the construction was just the beginning. We are refurbishing all the rooms with new towel bars, shelves, and hanger bars. There is also a table installed in each room. Wooden blinds will be installed after the window conversion.

Bristlecone Lodge was the last major building on our site to make wheelchair accessible. Two of the rooms are now connected by a wheelchair accessible bathroom with a roll-in shower, and both rooms have wheelchair accessible sinks.

The only remaining work that needs to happen is installing new windows throughout the building at our Memorial Day Work Weekend this year.

Thank you to all of those that donated to make this project a reality. We now have a wonderful and homey space to host our guests year round. Bristlecone Lodge is ready serve another 40 years. We are all awaiting and anticipating your arrival!!

2021: RTALC Ready for a Full Summer of Faith & Fun!

To say last summer was challenging would be an understatement. But we were able to provide five weeks of camp on site last summer and we had no cases of COVID. As we come out the back side of this pandemic, the experience we gained from last summer as well as the improving conditions around COVID and people getting vaccinated have put us in a great position to provide amazing camp experiences this summer for all who will join us!

At this point, it looks like all systems are go and we are in line to live into our normal schedule: Directors' training starting May 24th, Memorial Day Work Weekend on May 28-31, Staff training starting May 31st, and the first week of camp starting June 13th.

We know everyone is ready to be done with the masks. But the reality is, for us to operate, they are going to still need to be part of our week. We are licensed childcare with the state of Colorado and so the Colorado Office of Early Childhood, Department of Human Services has

established guidelines for summer camps that we will follow to keep our license. One of the reasons we were successful last summer is that we set our protocols and lived into them. Our nurse from last summer, Carla Herbig, will be back with us this summer. Carla's approach is simple. Battling COVID is like stacking pieces of swiss cheese. Each layer of swiss cheese is a protocol we implement such as washing hands, using hand sanitizer, and using masks when we are singing or we are indoors in large groups. There are holes in each layer individually. But if you stack enough layers, the holes are covered. The vaccine is not a cure-all yet, just another layer that covers more holes and keeps us safer.

With that said, people that weren't with us last summer have asked how camp will be different. There are several things that will carry over. We will keep most of the cleaning protocols we had a year ago.

We will have plated meals most the time, and we will eat outside more than we used to. The capacity of camp has been reduced from 115 campers to 102 campers for each week. This new number came from us analyzing each cabin and its capacity, and then coming to a new total capacity for camp. Villages will be smaller and cabin groups will be smaller. We removed beds last year for social distancing that we are not adding back.

People are also asking how will things be the same. You will be with the same great quality staff that we are known for. There will still be impactful Bible studies, creative Village of the Days led by campers, deep and meaningful worship, all the fun camp activities like woodcarving, ropes course, pottery, rafting, and hiking. There will still be the close community of your cabin and your village.

Anyone that came to camp last summer will tell you that, even with the

extra protocols, it was still camp, and felt like camp. We had some of last year's campers, who have been coming for ten years, say that it was their best week of camp ever!

Know that we are monitoring all of state guidelines and will adjust as those change. The COVID protocols are really just a temporary, but necessary, inconvenience for the summer. The essence of camp is the people, the relationships, and the Holy Spirit working within a community that is gathered for the purpose of growing in our faith. That is what camp is all about. That has never changed. A complete list of all of our protocols can be found on the COVID page of our website. There are still a few spots remaining in the first week Junior High camp and in the second week Junior and Intro camps. If you haven't registered, there is still time to sign up for an unforgettable week at Rainbow Trail!

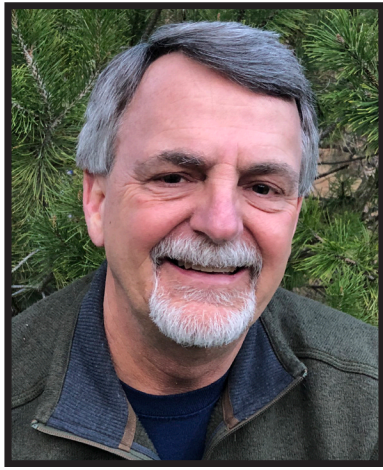
Rainbow Trail Mission Statement

Rainbow Trail Lutheran Camp creates holy spaces that embody God's radical grace to affirm, empower, and transform all people to be Christ's light in the world

Trail Boss

By Dave Jarvis - Executive Director

What a difference a year makes! A year ago, we weren't even sure if camp could happen. Our full-time team was putting four different scenarios together of how our summer might play out. There was so much that was unknown. And here we are a year later, a little wiser, and ready to run a full summer of ministry with an amazing staff. Our camp weeks are full, our staff is hired and already training, and there is a renewed energy of just being able to be together in this special place. Camp will still be a little different than 2019; that is the reality, but we are continually getting closer to what we have known. Because of all the work we did last year, we can confidently attack the challenges of the coming summer, knowing we have tackled far bigger beasts. I never want to lose sight, in the midst of all of the preparation work, that we have the awesome opportunity to be a part of the faith development of so many of your children. We can't wait for summer to get here! We are ready to serve!



Registrations are really strong for summer. Seven of our nine regular weeks of summer camp are full with open spots only in week #1 (Junior High) and week #2 (Juniors), and the open Junior High Compass Points trip. There are a total 50 spots left in the first 9 weeks of summer! Don't miss out on the chance to be at camp with our great staff. We are all coming out the back side of this pandemic, and your world may not be even close to normal yet. If you are considering registering your child for camp, know we have camperships available to help. This is exactly why we have campership funds. If finances are an issue, email me and let's talk. Don't let money be the reason for not coming to camp. We have faithful donors that give specifically for camperships. There are no forms to fill out, and you don't need to share any private information. Take advantage of this opportunity to help your child have the best week of their summer at Rainbow Trail!

Our summer staff will soon be here! Our Directors arrive on Monday, May 24th and the rest of our ministry team arrives on May 31st. We are so excited about this team and all they will have to offer our campers. There are a lot great returners that you know and love. There are also some amazing new folks that you will fall in love with as well. Over 50% of this staff is from the Rocky Mountain Synod. We began the online portion of our training with this crew the last week of March. Please keep this team in your prayers as they prepare for this summer. May God use them in amazing ways this summer!!

The Land Exchange is moving forward! The Forest Service has completed the supervisory review of their Feasibility Analysis, and we have submitted the final adjustments to our land exchange proposal. I have presented to County Commissioners of Custer and Fremont counties requesting letters of support for moving the land exchange process forward. The Forest Service is also completing their Request for Valuation Services which is the final step before we get a final decision about our land exchange proposal. Optimistically, we are hoping that we will sign the agreement to initiate the actual exchange sometime in July! That will be a day to celebrate. Please keep this land exchange in your prayers. There are still opportunities to support this effort. We still need to raise around \$120,000 to cover all of the remaining costs of the 60 steps of the actual exchange. If you would like to support this effort, mark your special check "Land Exchange." We are also equipped to take stock gifts as well. I'd be happy to talk with you about the details! We will own our site and it will be the biggest celebration when that happens! Thanks for walking this journey with us.

We continue to need your support for this ministry through prayer, through your gift of time and energy, and through your financial gifts. I hope you know how much your gifts are appreciated. Last year demonstrated just how important our supporters are to this ministry. There are still challenges, but nothing we can't overcome. We have made great strides in improving our site, updating our equipment, and expanding our ability to serve because of your gifts. It is through your support that we are able to do things that we could have only imagined. We stretch every gift dollar for maximum impact. By enlisting the help of over 100 enthusiastic volunteers over Memorial Day Work Weekend, we figure that we are making about \$75,000 of improvements to our site every year for a fraction of that amount. Major projects for Memorial Work Weekend this year include a new split rail fence for Bristlecone Lodge, new windows throughout Bristlecone Lodge, new porch and decking on the woodcarving cabin, new LED dimmable flood lighting in the pavilion, new stage track lighting on both ends of the pavilion, new paint on the outside of Bristlecone Lodge, and new woodchips on the ropes course and the labyrinth! There are so many ways to support this ministry. Gifts of all sizes, large and small, make this ministry run. Thanks for believing in the power of this ministry!

I'm so ready to see you this summer! It is going to be a great one! RTALC is coming out of this pandemic in a better place. We have learned a lot! Our rhythm of spring has felt like old times! The preparation has been exciting. Kids are so ready to be back at camp and back together! I can't believe we are already starting another one. Thanks for the blessing of serving you for another summer. This is summer #33 for me at this sacred place. Thanks for this opportunity to serve you. I can't wait! See you soon!

Until next time...

Things Are Going to get a Little Chippy



A special thanks to Miles Brown and Wayne Guthals for donating this Altec Kubota wood chipper. We are extremely grateful for your donation to our organization. In previous summers, we would rent a chipper from the Forest Service which was expensive and occasionally a hassle to coordinate so it's a really big deal for us to have our own. Based on the amount of trimming we did last summer, the new chipper will get a lot of run time in the next few months which is so exciting. We plan on re-chipping the site in places like the High Ropes course and many other spots during this year's Memorial Day and Bethany Church work weekends. Rainbow Trail is truly blessed to have support from folks like this and all of you. It helps make the ministry we do here even more impactful.

Visit www.rainbowtrail.org to apply today!

MALE COUNSELOR POSITIONS STILL AVAILABLE!

Are you and/or a friend interested in outdoor ministry? Are you interested in a life changing summer in walking with campers in their faith journey while growing in your own? Rainbow Trail Lutheran Camp could be the place for you this summer with openings in our male counselor position! Contact cam@rainbowtrail.org to find out more information of what the possibilities look like!

- Work with campers of all ages
- Experience a life changing summer while being a part of a special community
- Be in the mountains of Colorado all summer

Rainbow Trail LUTHERAN CAMP

The 15th Annual Grace Race



The date has been set! This will be a great way to get outside, get some exercise, and make a huge difference. Plan on joining us on Saturday, October 2, 2021 for the 15th Annual Grace Race for World Hunger. Can't wait to see you all there to support the World Hunger Appeal. We're hoping to have 300 runners and raise \$10,000 this year for World Hunger.

Plans are that we will be back in the park!! The race will begin at 4 pm with check-in beginning at 2:30 pm. We will have our post-race party including grilling burgers and our awards ceremony. We will also announce the winner of "The Fleetest Flock" trophy, a traveling trophy for the congregation with the most participants. Last year, Augustana won the Fleetest Flock. We are once again partnering with the Rocky Mountain Synod World Hunger appeal. We are all going to need to get outside after all of our quarantine time.



Augustana, Denver
"Fleetest Flock" Trophy Winners 2020

Advertise Your Business for a Great Cause

Every fall, Rainbow Trail Lutheran Camp hosts its annual Grace Race to help stamp out world hunger. This annual 5k run/walk was started as part of RTALC's 50th anniversary in 2007, to raise money for the ELCA World Hunger Appeal. The event is held in collaboration with the Rocky Mountain Synod Hunger Network. Over the last fourteen years, the Rainbow Trail community has contributed \$69,933.13 to the ELCA World Hunger Appeal. But we think we can do more. The 15th Annual Grace Race will be held on Saturday, October 2, 2021. We are aiming for 300 participants for this year's race. This can be the year we top \$10,000 for the check that we send to the ELCA World Hunger Appeal!! Another great way to support this event and cause is to advertise your business on the classy Grace Race tech shirts. For a \$300 donation, we will add your company name and logo to the race shirt. There will also be a

link for your business off of the RTALC Grace race webpage. We'll give your business some great press at the race and you will help make an incredible difference in our world. Contact Dave Jarvis at dave@rainbowtrail.org for more details.



Want To Make A Difference?

Give a gift to Rainbow Trail and invest in the faith lives of thousands of kids. In today's economy there is no better return!

www.rainbowtrail.org

Donate

Online Anytime

Simonton Says

By Sands Simonton - Director of Site and Facilities

Hello to everyone from the site of Rainbow Trail! I hope you're all able to start easing back into your pre-Covid lives while continuing to stay safe. Salida has opened just about everything back up to full service, which has been excellent, but at the same time still concerning. My new roommate and I continue to get along very well, and I've started making more friends in Salida. Maybe we get along so well because he knows he'll have the house mostly to himself over the summer, Hah!



Things at camp are going very well; I'm knocking things off the list left and right, which gives me a great feeling. We've been getting consistent snow up here, and I'm thinking that we are going to witness one of the greenest springs I've ever seen in person here. We finally have some good moisture going into the summer for the first time in a long time! The roads are a little bit rough because of the mud, but the site is as ready as ever for another meaningful and life-giving summer with all of you.

In a few weeks, I'll have the irrigation back up and running, and everything will be in place for our Memorial Day work weekend. Last week, Dave and I met with our Memorial Day contractors in Denver, where we were able to talk through some of the new project ideas. The conversations that came from that dinner made me so excited, and I seriously look forward to all the great improvements we have planned. I think you all deserve at least a little preview, to name a few; the exterior of BC and the surrounding spaces will be a big priority (including new windows for BC), a new piece of awesome technology in Aspen (think movie nights and cabin vids!), and new/adjusted lighting in the Pavilion (no more going blind!). That and much more will be happening.

Looking at the Summer of 2021, I can only think of how blessed I am to be working another summer at this transformative and beautiful place. It's amazing to think that I've come here all my life and now I work here every day. I can't wait to work with my new maintenance team and camp hand crew and to be able to teach them everything I know about keeping the site of Rainbow Trail a pristine, comfortable, and well-kept space. I can't wait to see all of you soon so we can share laughs and stories from 2020. Stay safe, and God bless.

Thank You Dalton & Sarah



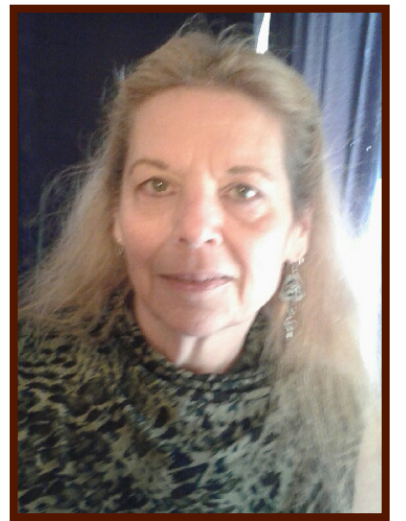
We are so thankful for our two gifted Program Assistants this year! Dalton and Sarah have been an integral part of our retreat season and year-round programming. Due to Covid-19 numbers and few retreats, these two have had to be creative and adaptable, and they met that challenge with grace and enthusiasm. They took the lead on our Confirmation Retreat, virtual Senior High Retreat, several hosted groups, and our Winter Family Weekends. Dalton and Sarah created a virtual youth group visit program for Rainbow Trail and helped us complete the finishing touches on Bristlecone Lodge. They've truly made an impact on this place and this staff team.

As they finish their time with us in May, they will head to leadership roles at Sky Ranch and then pursue work in education and ministry. May God go with you both as you head down the mountain!

Chris' Corner

By Chris Seaman - Food Service Manager

Hello to my RTALC family! The time is drawing near! Soon I will be able to see many of my beloved and diverse camp family in person! It feels like an eternity since we have been together. Life at camp continues to be a blessing to me. This is my 18th year at RTALC, and I am still in love with my job and this place, and the most incredible people ever, that surround me! I didn't think responding to that one-inch ad in the Weekly Westcliffe newspaper would be life-changing! Thank You, Dave!



I want to say farewell to Dalton and Sarah, our PGA'S. We didn't get to spend a lot of time together but what we did was quality! To say this has been a different kind of retreat season is an understatement! I pray that the next chapter will fill your lives with love, joy, and great adventures! I will miss them!

Daniel has made sure we make it up next year. We have retreats booked thru Advent Fest. How exciting! If you plan on a weekend at camp of Fellowship or just relaxation, I can't wait to see you!

It's 4/21 as I write this article. Looking out my office window at all the snow still on the ground, I see the possibility for many campfires this summer. Wouldn't that be grand? Just the thought of laughter and joy of children on the mall lifts my spirits to a place they haven't been in a while!

OK, now it's time for some obscure food facts! Did you know that bananas, cucumbers, and kiwis are all classified as berries? Strawberries, blackberries, and raspberries are not!

Did you know that lobster and oysters were considered food for the working class? Lobsters are sea insects. They used to be tossed back in or given to the servants. There used to be a law on how much lobster you could serve a prisoner. My, how things have changed! Did you know that the sandwich was created due to gambling? The Earl of Sandwich, John Montagu, was on a 24-hour gambling streak. He wanted to eat but didn't want to put the cards down, and out of this, the sandwich was born!

OK, now for some recipes! I know that many campers come here who are of Norwegian and Swedish descent. I found this recipe and tried them at home. They are quite good! "Swedish Oatmeal Drops" you will need, 1c. butter(no subs!) melted, 1c. Quick-cooking oats, 2eggs, 1c.sugar, 2tsp. Vanilla, 1 1/4c. Flour, 1c. Flaked coconut, 1c. Chopped nuts(just about any nut will work) 1tsp. Baking powder. In a large bowl, pour butter over oats. Stir to coat; let stand for 10 minutes. In a small bowl, combine the eggs, sugar, and vanilla; pour over the oat mixture. Combine flour, coconut, nuts, and baking powder; gradually add to the oat mixture. Drop by rounded teaspoons 2" apart onto ungreased baking sheets. Bake at 350 for 9-11 minutes or till the edges are golden brown. Cool for 5 minutes before moving to wire racks.

I should wrap this up. Have to make sure there's room for you to see our fantastic staff! Always remember; God Is Great!!!!

Love, -Chris

ORDER RAINBOW TRAIL BLEND FOR YOUR CHURCH!

- Tired of Folgers? You can order 5 pound bags of delicious, fresh-roasted,
- whole bean or ground Rainbow Trail Blend coffee online! What's even
- better is that all profits of RTALC's unique coffee blend provide funds for
- kids to come to camp! Start ordering delicious coffee with a purpose for
- your congregation today by going to shop.rainbowtrail.org!

Save The Date: Colorado Gives Day for 2021

Support RTALC on the 12th Annual Colorado Gives Day! Save the date! On Tuesday, December 7, 2021, Coloradans will come together again to raise millions of dollars for nonprofits like Rainbow Trail. Last year, a remarkable \$50 million was distributed to 2,828 Colorado nonprofits. RTALC raised an amazing \$108,537 in that 24-hour period. With the support received in 2020, we have set a goal for 2021 of \$89,000! All funds raised will go towards our Annual Fund. We need a great Colorado Gives Day to end the year strong. Also, we are still in the middle of the land exchange process and some people have shifted their annual fund donations towards that Capital appeal. We still need our annual funds to sustain our day-to-day operations. Mark your calendars and make a difference!

COMMUNITY FIRST FOUNDATION

COLORADO GIVES DAY 

ColoradoGivesDay.org Dec. 7

Now THIS is What You've Been Waiting for...



Beka Gershenoff
Counselor
Wartburg College
Urbandale, IA



Jack Flemer
Counselor
CU Colorado Springs
Colorado Springs, CO



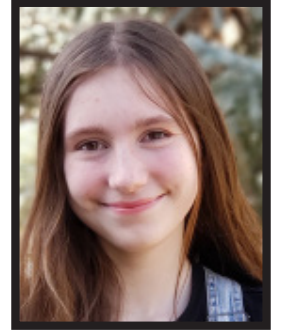
Arianna Scott
Counselor
Vanguard University
Lakewood, CO



Kaylie Russler
Counselor
University of Minnesota
Vadnais Heights, MN



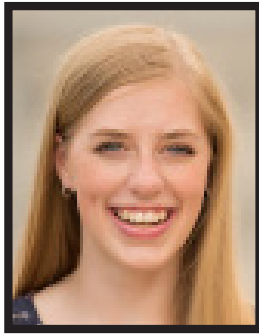
Sara Larson
Office Assistant
University of Northern CO
Greeley, CO



Brianne Engel
Camphand
Denver School of The Arts
Denver, CO



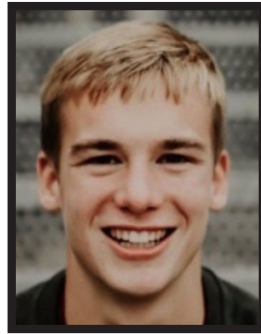
Anna Saathoff
Camphand
Pueblo County High School
Pueblo, CO



Claire Fisk
Arts & Crafts Instructor
Sterling College
Denver, CO



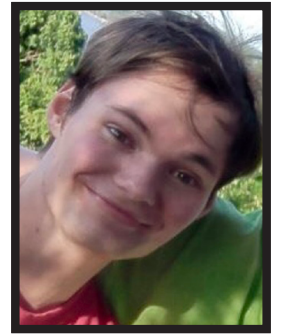
Ashley Procanyn
Executive Assistant
Colorado State University
Allentown, PA



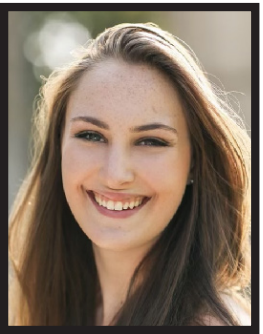
Jay Lewer
Counselor
Carthage College
Waseca, MN



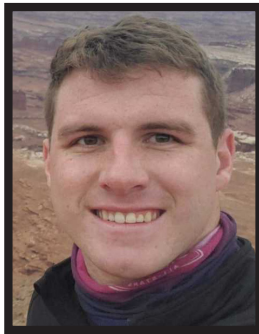
Macy Pedersen
Counselor
Beloit College
Eden Prairie, MN



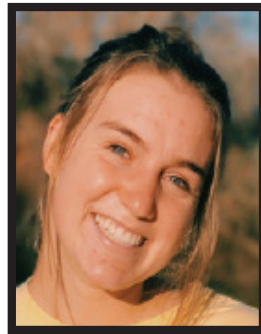
William Dohle
Counselor
Pueblo, CO



Liz Palmer
Camphand
Air Academy High School
Colorado Springs, CO



Matt Meline
Summer Facilities Director
University of Wyoming
Eagle, CO



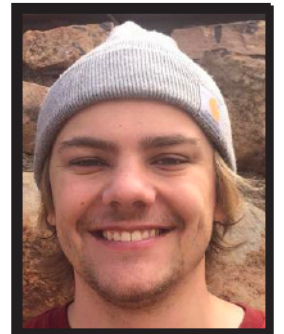
Abigail Wiggins
Ropes Coordinator
Colorado State University
Denver, CO



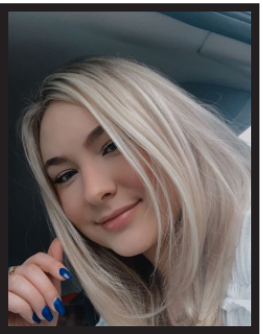
Becky Ritter
Counselor
University of Minnesota
Rocklin, CA



Megan Kleen
Compass Points Director
University of Montana
Fort Collins, CO



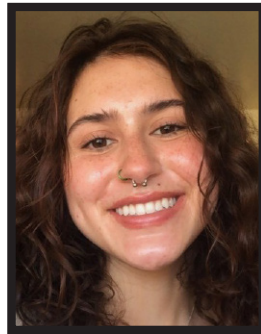
Sam Walmer
Bridging Borders Director
University of Colorado
Littleton, CO



Annie Dietz
Counselor
Wartburg College
Thorton, CO



Tessa Leonard
Counselor
Colorado State University
Littleton, CO



Sadie Nutt
Counselor
Northern Arizona University
Las Cruces, NM



Joey Augustin
Counselor
University of Minnesota
Hudson, WI



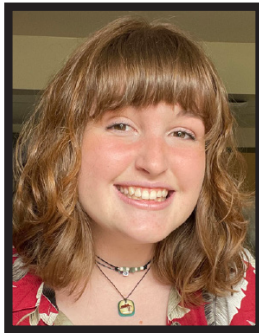
Haylee Hayden
Woodcarving Instructor
University of Northern CO
Los Alamos, NM



Kiera Toney
Camphand
Heritage High School
Littleton, CO



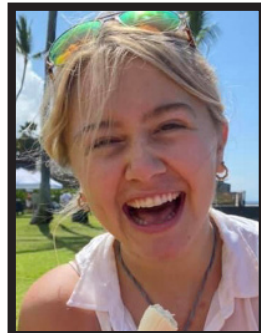
Hank Freese
Compass Points Director
Augustana University
Sioux Falls, SD



Gabriella Johnson
Counselor
The Ohio State University
Aورا, CO



Ben Ackermann
Counselor
Luther College
Lake City, MN



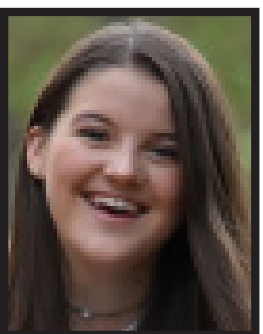
Erika Stellmaker
Bridging Borders Director
University of Minnesota
Minneapolis, MN



Kylie Pedersen
Compass Points Director
St. Norbert College
Eden Prairie, MN



Abby Mudgett
Counselor
Northern Arizona University
Broomfield, CO



Paige Dayton
Assistant Cook
University of Northern CO
Monument, CO



Sami Larsh
Bridging Borders Director
Azusa Pacific University
Granite Bay, CA



Rebecca Flerchinger
Camphand
Mead High School
Longmont, CO



Elyse Phillips
Counselor
Northern Arizona University
Los Alamos, NM

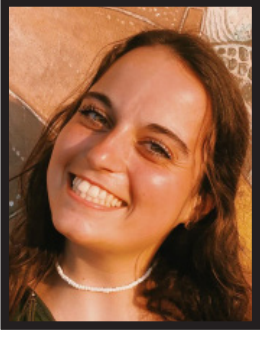


Ethan Roberts
Bridging Borders Director
Capital University
Lancaster, OH

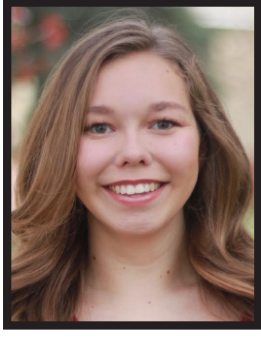


Max Marold
Maintenance Assistant
Ankeny Centennial High School
Ankeny, IA

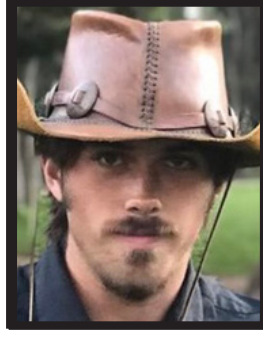
...The 2021 Rainbow Trail Summer Staff



Kelly Marsh
Counselor
Metro State University
Loveland, CO



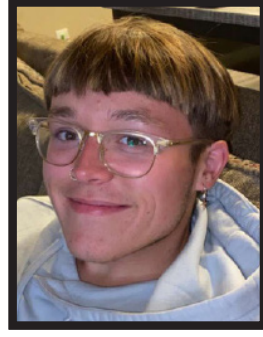
Abby Mortinsen
Arts & Crafts/Pottery Instructor
University of Northern CO
Centennial, CO



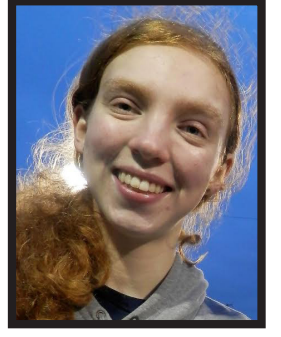
Will Johnson
Compass Points Director
University of Arkansas
Austin, TX



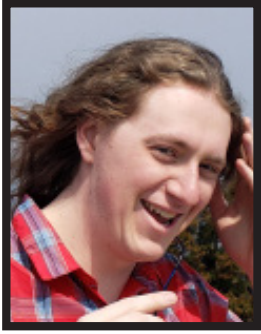
Grace Hodson
Camphand
Arvada West High School
Arvada, CO



Ryan Gilstrap
Counselor
University of Iowa
Evansdale, IA



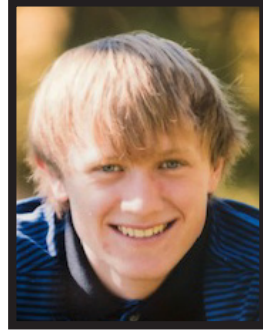
Kjersti Olson
Bridging Borders Director
Augustana University
Lake City, IA



Evan Lieber
Counselor
Luther College
Colorado Springs, CO



Katrina Bajumpaa
Counselor
MN State University Moorhead
Wahpeton, ND



Jonah Hanson
Counselor
Colorado Mesa University
Burlington, CO



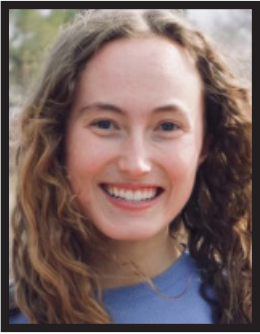
Carla Herbig
Camp Nurse
Fredericksburg, TX



Kaycie Kolk
Travel Support Director
University of Colorado
Lakewood, CO



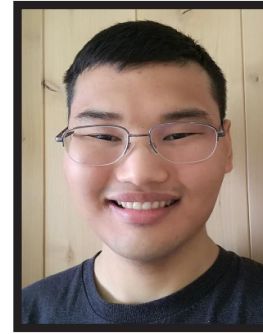
Adam Schmuck
Guitar Instructor
Wartburg College
Denver, CO



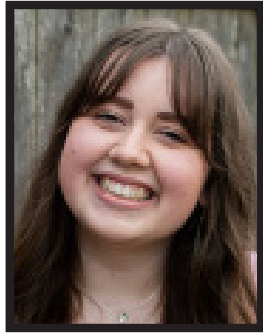
Sydney Mudgett
Support Staff Director
Augustana University
Broomfield, CO



Silje Ostrem
Kitchen Assitant
Colorado School of Mines
Colorado Springs, CO



Matt LaJoy
Ropes Coordinator
Montrose, CO



Maggy Hovden
Bridging Borders Director
University of Iowa
Decorah, IA



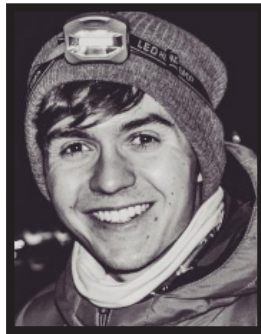
Erin Farrell
Counselor
University of Minnesota
Eden Praire, MN



Annika Buhr
Camphand
Cherry Creek High School
Greenwood Village, CO



Adelle Adams
Camphand
Explore Academy High School
Albuquerque, New Mexico



Alec Ille
Camp Videographer
Wartburg College
Blooming Prairie, MN



Madison Sather
Counselor
Texas Lutheran University
Huffman, TX



Sam Marold
Counselor
University of Iowa
Ankeny, IA



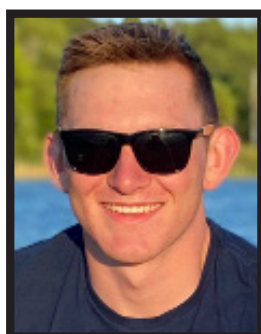
Jonathan Harker
Counselor
Conifer High School
Conifer, CO



Ashley Pedersen
Counselor
Colorado State University
Colorado Springs, CO



Gage Salyer
Counselor
University of Wyoming
Broomfield, CO



Davis Bain
Counselor
University of Minnesota
Shakopee, MN



Maggie Brakke
Director of Compass Points &
Day Camp Ministries
Colorado Springs, CO



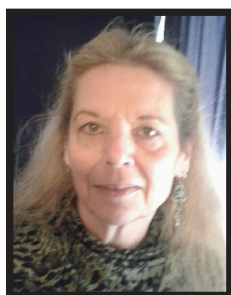
Cam Regennitter
Director of On-Site &
Bridging Borders
Colorado Springs, CO



Daniel Kirschbaum
Director of Retreat Ministries
Colorado Springs, CO



Sands Simonton
Director of Sites & Facilities
Salida, CO



Chris Seaman
Food Service Manager
Westcliffe, CO



Lori Hendress
Executive Assistant
Cañon City, CO



Aurice Worley
Bookkeeper
Cañon City, CO



Dave Jarvis
Executive Director
Cañon City, CO

Nellie Jarvis
Intro Camp Director
Cañon City, CO

Cam(p) Vibes

By Cam Regennitter - Director of On-Site & Bridging Borders

What's going on, all of you lovely people? Thanks for tuning in to Cam(p) Vibes; it is very humbling to have great people like you read what is going on in my life. Thanks for all the love and support you show to this place and me. I promise I never take it for granted!

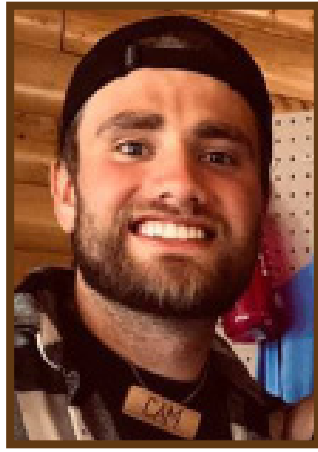
Springtime has this special feeling when you are in the field of work that we do. Knowing that the next season up is our busiest season of the year helps me get intentional with what I am doing back at home and up at camp to make sure I am prepared and ready to go. I have been able to get up to camp a couple of times and can say I can't wait to be back up there in a few weeks. We had our ropes training up there, directly followed by a couple of Confirmation groups. Shout out to Bethany and Joy Lutheran, you guys rock, and I can't wait to see most of you this summer! I always try to get a day or two on-site before people show up for summer. It's my "calm before the storm" moment that helps me recognize how special the area we are in and not forget that thought while summer is running.

Speaking of summer, I don't think we have ever had this much hype leading into summer before. Many people are ready to get back up there and being in God's beautiful creation along with all of their friends! That includes campers, staff, grandparents, adult leaders, and everyone else a part of this community. Even though we won't be completely back to normal program-wise, it will feel more normal than last summer. I am excited to have you all meet our great summer staff this year; this group will do great ministry this summer!

For my personal life, everything is excellent! I have been playing in a lot of sports leagues this year, mainly football and volleyball. These are great outlets for me, but it has also been fun meeting new people around the Springs and getting to know them. Also, I recently purchased a 1999 Jeep Wrangler from my dad that I have turned into a project. I want to fix it up, get a lift kit and new wheels, add newer parts to the exterior and interior, and much more so it can be a fun trailing vehicle. We Regennitter kids grew up driving this jeep throughout our childhood, and it will be great to keep it in the family!

Thanks again for the love and support; we will see you soon!

Peace and Blessings, *Cam*



The Brak Pack

By Maggie Brakke - Director of Compass Points & Day Camp

Summer is coming fast, and I am so excited! In March, my older brother Willie, master gear-repairer, came up to camp to help us fix some of our Compass Points gear. We repaired 32 backpacks and 12 tents! I also learned tons of new skills- replacing zippers, basic sewing, and patching. It will be great to start the summer with our gear in such great shape!

Last week, I participated in the Level 1 Ropes Course Certification class that we hosted. It was so fun to be up on the course all week, slowly getting over my fear of heights and playing in the snow! It will be awesome to be able to lead groups through the course this summer and watch campers grow from the experience as individuals and teams. I am looking forward to another training at the end of this week. I will be heading up to Estes Park for my 10 day Wilderness First Responder training, and by May 2nd I will *hopefully* be fully certified to respond to any backcountry situation that may arise this summer. Wish me luck!

On a personal note, my fully vaccinated parents are coming to visit me for the first time in over a year! It will be really great to spend some time hiking, playing cribbage, and showing my family the place I now call home.

As always, stop by Eagle Peak to say "Hi!" when you are at camp this summer!

Maggie



Choose to Designate your Thrivent Choice Dollars to RTLCL and Make A Difference!

Thrivent Financial for Lutherans has a charitable giving program called Thrivent Choice. Each member is allocated a set amount of money to give to the Lutheran organizations of their choice. Last year, Rainbow Trail received \$25,000 from this program. Our goal for 2021 is \$28,000. We hope that you will designate your allocated dollars to Rainbow Trail Lutheran Camp. You will need to go out to the Thrivent website quarterly to designate your Thrivent Choice dollars. We know that is a lot to remember and we can help. If you will let us know that you have designated your Thrivent Choice dollars to Rainbow Trail, we can send you either an email or a postcard quarterly to remind you to go out and designate your dollars. If you haven't designated your Choice dollars to any organization, just follow the steps below to designate them to Rainbow Trail.

HERE ARE STEP BY STEP INSTRUCTIONS ON HOW TO DESIGNATE YOUR FUNDS:

Over the Internet

1. Log on to www.thrivent.com
2. Sign in with your username and password or register for an account.
3. Once you have registered and signed in, select the "Direct Choice Dollars" button for Thrivent Choice in the right hand side.
4. In the middle of the next page, type "Rainbow Trail Lutheran Camp" in the "Organization Name" box, leave "City" blank, and click search.
5. Next to our camp name, you will click the "Direct Now" button. You will be able to assign all or part of your Choice dollars to us. You can also set it up so Rainbow Trail continues to get your future Thrivent Choice Dollars as well.
6. Click the "submit" button and your Thrivent Choice Dollars will be sent to our ministry.

Over the Phone

1. Call 800-847-4836.
2. Follow the prompts that are given.
3. You will be asked for the last four digits of your Social Security number, then you will be sent through an automated operator system. Our camp is listed as "Rainbow Trail Lutheran Camp."

This is just one more way that you can give to support this ministry. Encourage your friends that are Thrivent members to do the same! If you have any questions, call Dave at the Canon City office.

Adult Open

Compass Points Trip

Dropping your kids off at camp and don't know what to do for a week? Staff Alumni looking to be a camper again? Interested in a week in a place apart, experiencing spiritual renewal in God's wild country? This adventure is for you! Spend a week hiking through the beautiful Sangre de Cristo Mountains with other adults from all over the country. With gear, food, rafting, permits, and a guest pastor to lead the spiritual side of the trip all provided, come join us for a relaxing adventure by a mountain lake. Spend your days fishing, exploring, taking in the scenery or peaking a nearby mountain, your itinerary is up to you and what you need! Register now!

The Lion's Den

By Daniel Kirschbaum - Director of Retreats



Spring is always filled with so much life! Our retreating has been picking up, our summer staff are preparing to join us soon, and our full-time team is hard at work in preparation for an exciting summer of ministry and busy fall retreat season. I'm so thankful for this Rainbow Trail community and our team.

Last year at this time the future was uncertain and yet we were committed to living in possibility. As we venture ahead into God's hopes for Rainbow Trail, it is clear that we have always and will continue to be a faith community that lives into the possibilities that

we are nudged toward by the Holy Spirit. There is new energy in the air that is exciting and filled with new promise.

I'm wrapping up my seminary studies and will be spending at least part of my summer doing some final writing work. This spring has been busy but filled with many joys at camp. We've welcomed more and more groups as the world is navigating life one year since the pandemic began.

It has been so good to have people back on the mountain. March and April have been a vibrant time for our retreat season. We've hosted men's groups, youth groups, confirmation classes, high ropes training, and many individual family stays in the Juniper Apartment. If you haven't had the chance to spend some time to take advantage of the individual get-away, I highly recommend it for next fall, winter, or spring!

As always, this family teaches me constantly and I stand in awe of the ways the people of Rainbow Trail walk beside me in life. Have a fantastic summer and we'll see you soon!

Daniel

Men's and Women's Retreats Registration Opens Up June 1st!

Visit <https://www.rainbowtrail.org/retreats/> or contact Daniel at daniel@rainbowtrail.org to learn more!

TRAILBLAZERS & PATHFINDERS

The following individuals are members of the 2021 Trailblazers and Pathfinders Club. Trailblazers is an annual giving club that keeps the ministry at Rainbow Trail alive and growing. To join, contact Dave 719-276-5233 or check out the “Donate” tab on our webpage at www.rainbowtrail.org. Many thanks to the following supporters of Rainbow Trail!

Base Camp Club

~~\$120-\$249~~
 Amy and Alan Schmuck
 Andrea & Larry Patella
 Anita & Matthew Seitz
 Barbara & Brian Haggerty
 Barbara & Chuck Exley
 Ben & Katie Rude
 Bert & Dolly Lager
 Beth Graham
 Bob & Jean Terry
 Bob & Linda Morton
 Brad & Brooke Shannon
 Brad & Deb Abbott
 Brad & Patty Taylor
 Brittany & Eric Schoer
 Bud & Kim Smoot
 Cameron Regennitter
 Cami Gregerson-Kopetka
 Carrie & Andrew Stephens
 Casey & James Dunning
 Cassie & Matthew Norden
 Chad Levert
 Chris & Gail Tucker
 Chris Dietz & Lisa Meyerdieks
 Christie Kurth
 Christina Brown-Erickson
 Christopher & Maren McLaren
 Christy Klemz
 Chuck & Gayle Newell
 Chuck & Robbie Breaux
 Claire Masters
 Clarence & Marlyn Versluys
 Clay Johnson
 Colin Twaddell
 Cordell & Patricia Halverson
 Corey & Jeanette Stull
 Craig Tierney
 Cyndi Gershenoff
 Cynthia & Kevin Gallagher
 Damon and Anna Marie Larson
 Dan & Liz Burris
 Daniel & Diana Breed
 Danny & Marcia Murray
 David & Raynee Price
 David Kumpe & Rosemarie Wipfelder
 Kumpe
 David Miller & Anne Wenzel
 Dean Klinkerman
 Deborah Bayles
 Dennis Bagénstos & Judy Leiseth
 Diane & William Duty
 Don & Mary Koppenhaver
 Don & Vanessa Barlow
 Don Troike
 Ed & Janice Norden
 Edna Anderson
 Elaine Fenstermacher
 Elizabeth & Matt White
 Elizabeth Nelson
 Ellen & Michael Stelzle
 Elsa Meyners
 Eric & Carolyn Gustafson
 Erica Couch
 Frank & Lorie Eby
 Gary & Joy Symes
 Gary and Karen Gabrielson
 Gaylene Szaltzer
 Gina & Jay Simonson
 Grandmother Jill O'Brien
 Greg & Shanna Murrell
 Haylee Hayden
 Jacqueline Johnson
 James & Candy Hersch
 Jan & James Osburn
 Jane Jebsen
 Janelle Hernandez
 Janice & Patrick Stoffel
 Janna & Mark Hosek
 Jean & Chris Hollowwa
 Jean Larson
 Jennifer & Wes Minor
 Jeremy Idler
 Jesse & Lindsay Crock
 Jessica Reeves
 Jim & Laura Lewis
 John & Kathy Eckhardt
 Jon and Judith Watson
 Joyce Mills
 Judy Hagge
 Julia & Colin Stone
 Julia Fritze-Singh & Jack Singh
 Julie & Ron Skelton
 Katherine & Robert Fauvelle
 Kathy & Tim Armstrong
 Kathy Perry
 Keith & Cara Avallone
 Keith & Tammy Wetter
 Keith Brakke & Peg Laforge
 Kelli & Adam Varnado
 Kelly Knupp and David Fox
 Kelsey & Wes McNeely
 Ken & Mary Sorenson
 Kevin & Marybeth Barkocy
 Kitty Jarvis
 Kyle & Andrew Pitts
 Kylie Stitt
 Leonard and Judy Walgren
 Lisa & Dan Walfer
 Lisa & David Young
 Lisa & Todd Kirschbaum
 Lisa and BJ Schmitzler
 Lisa Boe-Sims
 Lynn & Pat Trenda
 Malinda & Anthony Paddock
 Mandy & Karl Brown
 Mandy & Ryan Sevier
 Marcia Oppermann
 Marcus Kochis
 Mareda Smith
 Maren Diercks & Paul Eppard
 Margaret and Norm Aarestad
 Margaret May
 Marianne Guinn
 Mark & Cindy Boatright
 Mark & Julie Stover
 Mark & Karen Bentz
 Mark & Michele Robinson
 Mark & Sharon Pope
 Mark & Vera Guebert-Steward
 Martha & Chuck Montano
 Marty Bendel Waite
 Mary Elmshausen
 Melissa & Jim Keller
 Merlyn & Jerry Tjelle
 Michelle Larsh
 Mickey & Cindy Bannister
 Mike & Darlene Delk
 Mike & Marit Rinke
 Mills, Joyce
 Moellering, McKenzie
 Mr Tim Edwin
 Mrs Glenda Syling & Mr Gary Syling
 Nicole & Bob Long
 Paul & Nancy Judson
 Paula Harms-Van Duyn
 Peter & Susan Marty
 Phil & Dee Erlander
 Randy Hawk
 Rebecca & Paul Marsh
 Rebecca & Scott Hofer
 Renae Deharde-Haes
 Richard Hielkema
 Robert & Carolyn Bye

Robert & Michelle Thomsen
 Roberta Wentworth
 Ron & Katy Harder
 Ron and Betty Yergert
 Ryan Higbea
 Sara & Clark Olson-Smith
 Sara Tinklenberg
 Sarah and Kevin Smith
 Scott & Sue Fernau
 Sean-Casey & Amy King
 Shawn OKeefe
 Stan & Sandy Johnson
 Steve & Judy Gunnlaugsson
 Sue Michel
 Tamra Mohs
 Terry & Holly Wubbena
 Theodore McNitt
 Tiff & Kevin Roiseland
 Tim & Sandra Maxa
 Tim Meyer
 Todd & Christine Wright
 Todd & Jill Grivetti
 Todd Engdahl
 Tonya & Jack Major
 Tracey LaFrano
 Tracy Rasmussen & Pat Diaz
 Trisha & Jonathan McClain
 Wendy & Glenn Kuzminski
 William & Darlene Beals

Rainbow Lake Club

~~\$250-\$499~~
 Alexis Carey
 Alina Love
 Allison & John Kane
 Amy & Neil Lynn
 Andrea Doeden
 Angela & Davis Herring
 Anne & Brandon Stratton
 Becky Zinn-Caulfield & Tom Caulfield
 Ben & Corliss Wyatt
 Ben Hogue
 Beth & David Bowman
 Betsy & John Tuma
 Bill & Shelly Hunter
 Bo & Hannah Graham
 Bob & Janelle Stover
 Bonnie Mohler
 Brian & Kira Ward
 Bryan & Denie Nordin
 Caitlin & Josh Nelson
 Carl & Gail Schurman
 Carrie & Kirby Quamen
 Chad & Aly Kohlmeyer
 Chris & Abbey Raap
 Christen & Andrew Brown
 Connor Foust
 Corey & Katie Okes
 Craig & Vonda Orton
 Craig Kelly
 Daniel Hanson & Aimee Lenth
 Dave & Carol Hartenberger
 Dave & Judy Peters
 Dave Gunnlaugsson
 David & Ingrid Waggoner
 David & Michelle Louis
 David Dorow & Wendy Clark
 Dawn & Shannon Ambrosio
 Dena Wangerin
 DeNae & Jim vanWestrienen
 Diane Boldt & Paul Hurcomb
 Donna Hayden
 Ede Ericson
 Emma Daharsh
 Eunice Mansfield
 Gary & Patty Bliss
 Gene & Angie Youngmann
 Greg & Barbara Haschke
 Hannah Maxa
 Harold & Susan Stitt
 Holman, Pat/Wangberg, Phil
 Jack & Phyllis Brown
 Jacob & Becca Dolan
 Jacobson, George & Nancy
 Jana Schofield & Michael Isensee
 Jared & Jackie Parker
 Jennifer Duensing-Crosbie
 Jeri & Mike Rhodes
 Jerry and Deb Paul
 Jessica & Todd Doyle
 Jim & Bonnie Shumaker
 Jim Ruden
 John & Karla Balk
 John & Peggy Harris
 Jon & Jo Powers
 June Hartmann & Allan Ochs
 Karen & Kevin Hyde
 Karen & Scott Pedersen
 Karen & Vineet Joshi
 Karj & Mitchell Kusek
 Karin Morton & Scott Arndt
 Karol La Valle
 Kathryn Schmidt
 Kathy & Dirk Hogue
 Katie & Daniel Scherr Bock
 Ken & Kay Gerhart
 Kendra & Steve Dunn
 Kent & Elizabeth Lund
 Kirby Olson
 Kris Ericson
 Kurt & Marsha Ehrhardt
 Landon Harman
 Lannette Abbey
 Larry & Eleanor Bonicelli
 Lauren Pruiitt
 Lisa & Chris Kassel
 Lori & Marty Stevens
 Lori Whitley
 Lynn & Mark Twietmeyer
 Marje & Fred Hoppe
 Mark & Carla Ewing
 Mark & Diane Sather
 Mark & Natalie Talley
 Mark & Ruth Peterson
 Martha & Clint Calvert
 Molly & David Moroney
 Ms Shannon Clodius
 Nancy Henning
 Nathan Palmquist
 Nicole Wanner & Daniel Peters
 Patti Nelson
 Paul & Marcia Dahlgren
 Peter and Kyra Meyer
 Phyllis & Randall Lynn
 Randy & Gail Mundt
 Ray & Carrie Harney
 Robert & Denise Tristano
 Robert & Renee Wade
 Rod and Sharie Schofieldand
 Roger & Claudia Larson
 Ron & Carol Zajic
 Roxann Hare
 Ruth & Nathan Brown
 Ruth Idler
 Ryan & Rianne Anderson
 Sarah & Zach Earhart
 Schenk Construction
 Sharon & Bruce Stokes
 Sigurd & Dianne Nelson
 Stephanie & Patrick Kerscher
 Stephanie Carlberg
 Steve & Nancy Lord
 Steve & Sue Samuelson
 Steven & Pamela Haigh
 Steven Erickson

Sue Samuelson
 Sue Satter
 Swan Ellert
 Tabitha McCombe
 Thulisiwe & Charles M Beresford
 Tim & Kaarin Jacobson
 Todd and Natalie Erickson
 Tom & Karan Haynes
 Tres & Debbie Hicks
 Trevor Alm
 Van & Sharon Mohlis
 Vicki White

Eagle Peak Club

~~\$500-\$999~~
 Abbie & Steve Freeman
 Adrian Miller
 Alisa & Jim Thomas
 Andrew & Stephanie Holloway
 Andrew Peterson & Kirsten Bock
 Audrey Maack
 Ben & Bev Larzelere
 Ben & Jordan Jarvis
 Beth & Evan Smith
 Brad and Kathleen Chewakin
 Brett & Jennifer Palmer
 Brian & Marisa Carlson
 Brian Weaver
 Carl & Emily Sauey
 Carl & Katie Edstrom
 Carol & Regan Foust
 Carolyn Brink
 Carrie & Philip Baylis
 Cathy Goodman
 Christiana & Sarah Parker
 Clint & Anne Pluenneke
 Craig & Beverly Essex
 Daniel Kirschbaum & Jonny Tippetts
 Dave & Antje Lund
 Dave & Betty Begeal
 Dave & Carissa Cruson
 David & Linda Higbea
 Delores & Gerry Mueller
 Derrick and Nicole Bunnell
 Don & Lisa Mietz
 Donald & Joyce Stephens
 Elizabeth & William Erhardt
 Eric & Beth Krueger
 Eric & Christina Ostovic
 Fred & Nancy Dorth
 Fred Hansen
 Gail & Mark Muehlethaler
 Herbert Korff
 Ina Kay & Tom Devers
 Jay and Tia Gamelin
 Jeff & Trisha Carlson
 Jeffrey & Liz Thomas
 Jerry & Joan Brown
 Jessica Craver
 Jill & Scott Marble
 Jim & Jan Marie Crock
 Jim & Pat Speckmann
 Joel & Carolyn Buck-Gengler
 John & Kathleen Erickson
 John & Pam Marietta
 John, Stanley & Evelyn
 Joshua Woolley
 Judith Neve
 Julie & Jary Shimer
 Julie & Scott Miller
 Karen & Richard Stenger
 Karen Nulle
 Karen Pforr
 Katie & Chris Staples
 Keli'i & Karen Rogers
 Kevin & Darlene Rohrbaugh
 Kevin & Denev Perkins
 Kiara & Andrew Jorgenson
 Kristen & Michael Saathoff
 Kurt Rager
 Laura Wouters
 Lauren & Patrick Elliott
 Leslie Swetnam
 Linda Carlisle
 Linda Stuehrenberg
 Lindsay Lafferty
 Liza & Nathan Blom
 Lynda Koening
 Margot Wright & Dan Montoya
 Marianne Woodward
 Marilyn & David Meline
 Mark & Allison Whitmire
 Mark & Anne Schwartz
 Melissa Neff
 Mia & Scott Harberts
 Michael & Karen Fritz
 Michael & Sarah Graham
 Michael Zumwalt
 Miscellaneous
 Ms Jennifer Calderone & Mr Jeff Calderone
 Ms. Harriett Porch
 Nathan & Laura Cooper
 Orla O'Callaghan & Paul McCarthy
 Orvid Olson
 Pam Christensen
 Peder & Noel Hansen
 Rachel & Hilton Matthew Holman
 Richard & Kathy Gash
 Rick & Becky Romano
 Robert Lundgren
 Roger & Jané Barrack
 Roger & Mary Riekena
 Ron & Heather Frost
 Sarah & Josh Anderson
 Sarah & Joshua Voigt
 Scott & Kristi Beebe
 Severt & Mary Kvamme
 steven westcott & Deborah Agar
 Susan Pfabe-Wiggans & Scott Wiggans
 Teak & Clifford Simonton
 Terry & Susan Pletkovich
 Tim & Amy Kessler
 Todd & Mary McNeil
 Tom Williamsen
 Vernon Pettit
 Vince & Leigh Felletter
 Walter & Karyl Meyer
 Wendy & Samantha Knipple
 Willy & Julie Reusser

Challenger Peak Club

~~\$1,000-\$1,499~~
 Anonymous
 Alina Love
 Alissa & Josh Plumley
 Ann & Newton Seitzinger
 Aurice & Bob Worley
 Ben Spiger & Kendra Wilde
 Betty Kirsebom
 Br Ryan Roberts & The Rev. Breonna Roberts
 Cheryl & Kevin Schenk
 Cheryl & Stephen Mahon
 Chris & Stephanie Frankle
 Dave & Betsy Risendal
 David & Carla Herbig
 David & Sharon Henneke
 Dawn & Gene Scherr
 Donald & Joyce Stephens
 Emily & Scott Dalen
 Erik & Kim Williams
 Evan Lieber
 Garrett & Stacey Struessel
 Gary & Kay Schritter
 Heather & Brad Widakas
 Hunter & Janet McDaniel

Jan & Rives Duncan
 Jill & Douglas Monsen
 Jim & Carol Reppert
 Jimmy & Shirley Pettigrew
 Jon & Kate Palmquist
 Julie & Mike Speck
 Kathryn Schmidt
 Ken & Sheryl Mielke
 Kit & LeEtta Choi
 Lillian McFerran
 Marianne Mooney
 Mark Skinner & Lou Ann Cheslock Skinner
 May & Pr. Michael Tassler
 Melissa Beaman
 Nancy & John Daharsh
 Nancy Skinner
 Paul & Elaine Hill
 Rev. Dave Risendal & Dr. Betsy Risendal
 Rev. Jason & Kellie Davis
 Rev. Scott & Emily Dalen
 Roger & Alice Aden
 Roger & Cheryl Thompson
 Ron & Olga Augustson
 Russ & Cheri Sorensen
 Ruth Von Mosch
 Schwabauer, Matthew
 Scott Arndt
 Shirley Splittgerber
 Stanley & Evelyn John
 Stephanie Lord & William McHardy
 Steven Gustafson & Beth Knutson
 Tania Ventura & Jeff Hollender
 Tom Stephens & Mary Beth Frederick
 Wayne Guthals

Long's Peak

~~\$1,500-\$2,499~~
 Anonymous
 Bob & Mindy Marold
 Annie & Jeff Heath
 Arthur Norman
 Austen Smith
 Bob & Joyce Witte
 Bruce Anderson
 Chuck & Michelle Nichols
 David & Anneliese Schneider
 David & Rebecca Kleen
 Don & Bernie Mathison
 Eric & Elizabeth Berrill
 Gloria & Joel Friesenegger
 Greg & Heidi Thiele
 Hannah Harman
 Jack & Donna Dice
 James Myra
 Janice & Jim Mulvany
 Jay Davis
 Katherine Tjeerdsma Betzel
 Kathy & Craig Twaddell
 Kevin & Janef Flesch
 Kevin & Sue Bethke
 Kim & Dave Guinn
 Kim & John Olson
 Koren Holden & Randall Toney
 Kurt Maack
 Les Anderson
 Marvin Plugge
 Mary Koepf
 Matt & Wendi Rusch
 Michelle & Dave Okes
 Mike & Bonnie Ensrude
 Mike & Laura Growney
 Paul & Kathy Edstrom
 Ray & Nicole Ferry
 Rick & Angela Guinn
 Rick & Sherry Smith
 Robert & Sharon Kolosseus
 Roger Kleen
 Ron & Betty Yergert
 Rosetta Bidne
 Sandra & M. Scott Elvington
 Stephanie Salazar
 Steve & Cheryl Mahon
 Tim & Jen Walmer
 Tom & Shari Gould
 William Ernstrom & Janie Hanson-Ernstrom

Mt. Elbert

~~\$2,500-\$4,999~~
 Anonymous
 Dennis & Lynn Gimlin
 Ann Hultquist & Roger Loots
 Bob & Andrea Mooney
 Bob & Ann Erickson
 Brenda & Lon Sears
 Charlie & Claire Pineda
 Dave & Carolyn Carlson
 Dawn & Brent Meyer
 Don & Lillian Filegar
 Gene & Cheri Zeller
 Hanne & Kip Schauer
 Hans & Kristin Wiersma
 Holly & Nick Massie
 Jason & Kellie Davis
 Karen Kelley
 Kate & Eric Waggoner
 Kristin & Christian Nisonger
 Larry & Lavona Brown
 Miles & Kim Brown
 Richard & Kathy Gash
 Rick & Charlene Coulson
 Ruth Ericson
 Stacy & Nicholas Branca
 Stephanie & Nathan Salazar
 Susan & Dave Fisk
 Tina Anderson
 Vicki & Christian Lieber

Mt. Princeton

~~\$5,000-\$9,999~~
 Anonymous
 Dave Young
 Bill & Charlotte Dausses
 Bob & Margie Dugan
 Catherine & Matt Larson
 David & Edie Phillips
 Ellie Arden
 Janet & Scott Harrison
 Janice Ehlers
 Jeanne & Tim Maloney
 Kevin & Tracey Engelhardt
 Laurie & Clay Mohler
 Lisa Mikolajczak Augustana Foundation Fund
 Marcia & Bill Smith
 Marsha Yosten
 Michelle & Robert Szydlowski
 Mike & Connie Burris
 Phil & Traci Dorth
 Ruth & David Ryll
 Shelly & Gerry Clemen
 Steve & Linda Jurens
 Steve Flessner
 Tara & Chad Sawinski
 Tom & Alison Buckett
Crestone Peak
~~\$10,000-\$19,999~~
 Anonymous
 Karen Smith
 Carol & Charlie Wick
 Dave & Nellie Jarvis
 Katie Dugan
Mt. of the Holy Cross
~~\$20,000 plus~~
 Anonymous
 Paul & Lisa Smith
 Randy & Lisa Schrader



Rainbow Trail

2021 Events Calendar

- May 28-31.....Memorial Day Work Weekend
- May 31- June 12.....Staff Training
- June 13- August 22.....Summer Camps
- September 3-6.....Labor Day Family Weekend
- September 16-18.....Men's Fly Fishing Retreat
- October 2.....Grace Race
- October 8-10.....Womens Retreat
- October 15-17.....Confirmation Retreat
- October 22-24.....Fall Ambassadors Retreat
- November 19-21.....Senior High Retreat
- Dec 3-5.....AdventFest

www.rainbowtrail.org

BRISTLECONE REMODEL

- Janice Ehlers
- Randy & Lisa Schrader
- Heather Land Estate
- Phil & Traci Dorth
- Teak & Cliff Simonton
- Dave & Nellie Jarvis
- Bill & Charlotte Dausses
- Stephanie & Nathan Salazar
- David & Kelly Misuraca
- Chris & Vicki Lieber
- Medtronic Foundation

ORGANIZATIONAL GIFTS

Rocky Mountain Synod ELCA

ANN (JARVIS) SMITH MEMORIAL LAND EXCHANGE FUND

- Adrian Miller
- Rosetta Bidne
- Dave & Nellie Jarvis
- Suzie & Ray Blanch
- Aurice & Bob Worley
- Teak & Clifford Simonton

DESIGNATED GIFTS

- Jean VanOrdstrand
- Heather Land
- Teak & Clifford Simonton
- Bill & Charlotte Dausses
- Phil & Traci Dorth – Bristlecone Remodel

GIFTS IN MEMORY

Nancy Skinner - Rev. Harold Skinner

CONTRIBUTORS

- Thank you to the following friends of Rainbow Trail who gave a gift in 2021
- Abby Mortinsen Diana & Michaele Linden-Johnson
 - Charles & Catherine Olin Andrew Mohrhaus
 - Marilyn Morris BettyAnn Arner
 - Susan Roach Stephen Werner
 - Stacey & Doyle Richard & Brenda Moellering Thompson
 - Jeff & Laurie Hanson Dana & Chad Buhr

GIFTS IN KIND

- Chris Seaman - Travel expenses
- Tabor Lutheran Church - 10 quilts from Rebekah Circle Group
- Nathan & Bonnie Palmquist - Towels and GoPro Hero 7
- Jerry & Joan Brown - Stamps
- Karel & Tom Hemler - Mountain of Office & Program Materials, 50 chairs, 1 desk, 1 Computer Monitor, 7 Reams of Colored Paper

PARTNER CONGREGATIONS

- Abiding Hope Lutheran Church, Littleton
- Advent Lutheran Church, Olathe, KS
- All Saints Lutheran Church, Albuquerque, MN
- American Lutheran Church, Grand Junction
- Ascension Lutheran Church, Colorado Springs
- Ascension Lutheran Church Women, Colorado Springs
- Atonement Lutheran Church, Boulder
- Atonement Lutheran Church, Lakewood
- Augustana Lutheran Church, Denver
- Augustana Foundation Fund, Denver
- Bethany Lutheran Church, Cherry Hills Village
- Bethany Lutheran Church Foundation, Cherry Hills Village
- Bethany Lutheran Church, Fredericksburg, TX
- Bethel Lutheran Church, Aurora
- Bethel Lutheran Church, Colorado Springs
- Bethlehem Lutheran Church, Los Alamos
- Black Forest Lutheran Church, Colorado Springs
- Christ Evangelical Lutheran Church, Santa Fe, NM
- Christ Lutheran Church, Highlands Ranch
- Christ the King Lutheran Church, Colorado Springs
- Christ the King Lutheran Church, Durango
- Christ the Savior, Aurora
- Christ the Servant, Louisville
- Community of Joy Lutheran Church, Rio Ranch, NM
- Cross of Christ Lutheran Church, Broomfield
- Cross of Hope Lutheran Church, Albuquerque, NM
- Cross of Glory Lutheran Church, Denver
- Evergreen Lutheran Church, Evergreen
- Faith Lutheran Church, Golden
- Faith Lutheran Church, Security
- First Lutheran Church, Colorado Springs
- First Lutheran Church, Gypsum
- First Lutheran Church, Longmont
- Glory of God Lutheran Church, Wheat Ridge
- Good Shepherd Lutheran Church, Glenwood Springs
- Grace Lutheran Church, Boulder
- Grace Lutheran Church, Colorado Springs
- Holy Cross Lutheran Church, Wheat Ridge
- Holy Cross Lutheran Church, Overland Park, KS

- Holy Ghost Lutheran Church, Fredericksburg, TX
- Holy Love Lutheran Church, Aurora
- Holy Shepherd Lutheran Church, Lakewood
- Holy Trinity Lutheran Church, Littleton
- Immanuel Lutheran Church, Greeley
- Joy Lutheran Church, Parker
- King of Glory Lutheran Church, Arvada
- King of Kings Lutheran Church, Pueblo
- Lord of the Hills Lutheran Church, Centennial
- Lord of the Mountains Lutheran Church, Dillon
- Lutheran Church of Hope, Broomfield
- Lutheran Church of the Holy Spirit, Centennial
- Mount Calvary Lutheran Church, Boulder
- Mount of the Holy Cross, Vail
- New Beginnings Church, Denver
- New Promise Lutheran Church, St. George, UT
- Our Savior's Lutheran Church, Alamogordo, NM
- Our Saviour's Lutheran Church, Ft. Collins
- Peace in Christ Lutheran Church, Elizabeth
- Prince of Peace Women of the ELCA, Colorado Springs
- Prince of Peace Lutheran Church, Colorado Springs
- Prince of Peace Lutheran Church, Denver
- Rocky Mountain Synod
- Shepherd of the Hills Lutheran Church, Canon City
- Shepherd of the Valley Lutheran Church, Grand Junction
- South Zumbro Lutheran Church, MN
- Spirit of the Mountain Lutheran Church, Golden
- St. Andrew Lutheran Church, Arvada
- St. Luke Lutheran Church, Albuquerque
- St. Paul Lutheran Church, Albuquerque
- St. Paul Lutheran Church, Calhan
- St. Peter Lutheran Church, Greenwood Village
- St. Peter's Lutheran Church, Marble Falls, TX
- St. Philip Lutheran Church, Littleton
- St. Stephen's Lutheran Church, Northglenn
- Tabor Lutheran Church, Pueblo
- Trinity Evangelical Lutheran Church, Boulder
- Trinity Lutheran Church, Fowler
- Trinity Lutheran Church, Loveland
- Trinity Lutheran Church, Monument

A different, yet significant way to support the ministries of Rainbow Trail

Needs List



These are essential items needed for our day-to-day operations. A designated monetary gift would certainly be welcome as well. You can bring these items with you any time you come to camp or call us to arrange a drop-off or pick-up. Thank you for your continued support!

- | | |
|---------------------------------------|--|
| White 20# copy Paper (Laser quality) | Long barreled fire lighters (Bic) |
| Reams of colored copy paper | 9x12 Manila envelopes (no clasps) |
| Avery 5366 Labels | 6x9 Manila Envelopes (no clasps) |
| Avery 5164 Labels | 10x13 Manila Envelopes (no clasps) |
| Nalgene Water Bottles (40) | 12 - 5 ft. round white Lifetime tables |
| Masking tape | Rain Jackets & Rain Pants |
| Scotch Tape | 25-gallon Rubbermaid tubs (24) |
| Duct Tape | On-Site and Compass Points Day Packs |
| Packing Tape | Foam Brushes - 1" |
| Postage stamps | Paintbrushes - all sizes, inexpensive |
| 8.5x11 Yellow Tablets | White File Folder Labels |
| 8 ft. Rectangle "Lifetime" tables (5) | 21 Gallons of Handsanitizer |

Wish List

These are larger items that we haven't budgeted for, but would love to have. Contact us if you would like to donate any of these items, new or gently used. You can bring them to camp, or call to arrange a drop-off or pick-up. Thank you for your continued support.



- | | |
|---|--|
| Heavy Duty Cotton Work Gloves | GoPro HERO7 Silver |
| Industrial Mop buckets (call us first!) | Vermeer Brush Chipper |
| Sturdy Wheelbarrows | Freezerless Refrigerator |
| New Full or single mattress pads | Dish Cart |
| New Queen sheets - white | Phillips 60W & 100W Dimmable LED Bulbs |
| New Queen mattress pads | Skid Steer Tire Chains |
| New 3-piece towel sets (20) | Used Day Camp Vehicle |
| Shark Navigator vacuums (4) | |
| Free Standing Space Heaters (3) | |

Shop Online

It's easy to give a gift from RTL's Needs or Wish Lists online. We've pre-selected items that we are looking for and provided links straight to great deals that we've found. There is also a Compass Points specific list online. You can even ship directly to us!

www.rainbowtrail.org/donate/needs-and-wish-list

Administrative Office

- 107 S. 9th Street, Suite B
- Canon City, CO 81212
- Phone: 719-276-5233
- Fax: 719-276-5235
- Office Hours: 9 am - 5 pm



Camp Office

- P.O. Box T
- 3056 County Road 198
- Hillside, CO 81232
- Phone: 719-942-4220
- Fax: 719-942-4000

Full-Time Staff

- Dave Jarvis, Executive Director.....dave@rainbowtrail.org
- Aurice Worley, Bookkeeper.....accounting@rainbowtrail.org
- Lori Hendress.....info@rainbowtrail.org
- Maggie Brakke, Director of Compass Points & Day Camp...maggie@rainbowtrail.org
- Daniel Kirschbaum, Director of Retreats.....daniel@rainbowtrail.org
- Cam Regennitter, Director of On-Site & Bridging Borders.....cam@rainbowtrail.org
- Sands Simonton, Director of Site & Facilities.....sands@rainbowtrail.org
- Chris Seaman, Food Service Manager.....chris@rainbowtrail.org

Board of Directors

- President.....Michelle Okes, Bethany Lutheran, Denver, CO
- Vice President.....Rev. Jane Jebson, Faith Lutheran, Golden, CO
- Secretary.....Rev. Nicolé Ferry, Bethlehem Lutheran, Los Alamos, NM
- Treasurer.....Bill Ernstrom, Faith Lutheran, Golden, CO
-Phillip Dorth, Bethany Lutheran, Denver, CO
-Rev. Vera Guebert-Steward, Evergreen Lutheran, Evergreen CO
-Rev. Kathy Armstrong, Cross of Christ Lutheran, Broomfield, CO
-Sandy Elvington, Cross of Christ, Broomfield, CO
-Rev. Leslie Welton, RMS Liaison
-Chris Lieber, Ascension, Colorado Springs, CO

We make every effort to list each donor, but mistakes do happen.

If we have inadvertently omitted your name or listed you incorrectly we apologize. Please call us, 719-276-5233, and let us know so that we can make corrections.