



Rainbow Reflections

BULK RATE
U.S. POSTAGE
PAID
CANON CITY, CO
PERMIT #30

Lutheran Outdoor Ministries of the Rockies
Rainbow Trail Lutheran Camp
107 South Ninth Street, Suite B
Canon City, Colorado 81212

Volume 32, Number 2 Spring 2020

Rainbow Trail is operated and maintained under authority of a USDA Forest Service Special Use Permit. Rainbow Trail is located in the San Isabel National Forest, USDA.

2020: Living into the Possibilities

RTLTC Will Hire and Pay Summer Staff Regardless Of What Summer Holds

It has been interesting last two months, to say the least. With the growing presence of COVID-19 in the United States, all Lutheran Outdoor Ministries (119 camps) have been wrestling with what to do with summer. Many have made the decision to close for the summer. Those decisions are made based on their own context.

As an organization, Rainbow Trail has chosen not to close, but rather live into the possibilities of what this summer can be no matter how it plays out. This doesn't mean that we aren't planning and strategizing for alternative scenarios, and it doesn't mean that we aren't being realistic. What this does mean is that the experiences campers have at RTLTC are so important that we are going to plan for our summer weeks until state or local health authorities or our RTLTC Board of Directors direct us that we shouldn't. Know that camper safety is our number one priority, and we will follow the directives and advice of the Centers for Disease Control (CDC), the American Camp Association (ACA), Custer County

Health Department, and the Colorado State authorities.

We have worked with our Board of Directors to develop multiple budget scenarios projecting how summer 2020 may play out. We know none of them will be exactly perfect; but with that said, we believe we have been forward thinking in trying to be safe in our plans, creative in our solutions, and faithful in our approach. All of the scenarios include us bringing in and paying our summer staff. We are almost fully staffed for the summer. You know the quality of our staff and the gift they have been in so many of your lives. These young adults have made a commitment to serve through RTLTC, and the Rainbow Trail Board has clearly said they want that to happen, no matter what the summer looks like. We feel it would be irresponsible to keep them on the line for a summer position and then to cut them loose now. We have made a commitment to this summer ministry team that they will have a job and they will get paid. Our summer staff will be working

in ministry, even if our site isn't open to campers. In one of the scenarios, we have a fully deployed summer staff in their own home towns, volunteering and serving on behalf of Rainbow Trail. Their roles and responsibilities may look different from anything we have ever done before, but ministry will continue. If we don't plan this way, we as a full-time staff, and the Board, believe we will have missed a huge opportunity.

There could be some financial challenges with this summer. Our commitment to our summer staff is a \$174,000 commitment, even if we don't have summer camp as we know it. Part of our mission is to not only serve our campers, but also to serve our staff. This is who we are. This is an investment in the present and also the future leadership of our church. We are hoping you will consider joining us in ensuring that this commitment is covered. Rainbow Trail did receive a PPP forgivable loan which will help some in this cause. Normally we would bring our director

team of 18 people in on May 18th. But currently, Custer County is limiting gatherings to 10 people or less until May 24th. So, in the meantime, our plan is to begin part of their training online around May 20th. We are hoping to get our directors in sometime in late May and complete their training on-site.

We will begin part our summer staff training online toward the end of the month with the hope of bringing in the rest of our summer staff in early June. We will do temperature checks starting two weeks before each group is scheduled to arrive and those checks will continue daily once they are on site. We will have RTLTC logoed masks for our staff and will practice social distancing while we will keep staff quarantined at our site. We are also exploring placing a gate at our entrance so that every person coming on site is checked including food delivery and UPS drivers.

Because of the delay of being able to get our summer staff in, we have had to make the tough decision to cancel Week 1 (June 7-13, 2020) of our summer.

Bristlecone Remodel Approaching Completion

Over the years the Rainbow Trail Board of Directors has been diligent about not starting building or remodel projects unless all of the funds are in the bank and readily available for the project. This policy has time and time again proven to be effective as most buildings on the site have been updated in the past seven years and RTLTC is completely debt free. The remodel of Bristlecone Lodge was no exception to this rule. Although we had originally planned to remodel Bristlecone in the Fall of 2016, we remained patient and diligent in project planning and fundraising. Thanks to incredible donor support in 2019 we were able to raise the remaining funds needed and began the remodel of Bristlecone on February 17, 2020. Things are progressing nicely and we're hopeful that the remodel will be finished for us to welcome in our summer staff mid-June.

The scope of the work is based much more in function rather than redesign. The downstairs rooms will now include a vanity in each room rather than just in the bathrooms, more outlets have been added to accommodate additional devices that peo-

ple bring to camp, and recessed lighting has been installed in the bedrooms for a more updated and functional feel.

Upstairs is where the true changes are taking place. The existing kitchen area has been converted into a coffee bar and an onsite laundry location has been added with a linen closet. We're excited about the flexibility the upstairs space will provide both summer and retreat season guests. The bedrooms upstairs or "party rooms" as they've

been nicknamed have also undergone a significant transformation. Each upstairs bedroom will still accommodate the same amount of people as before but now has two sinks, two showers and two toilets per side. Living in a room with 10-12 people and one bathroom was never ideal so we're hopeful this will make that living situation better in a lot of ways. The common areas will look largely the same but will be re-textured and repainted to match the rest of the building.



All common areas will be updated with new flooring and light fixtures. In addition to cosmetic upgrades in the common spaces, all exterior doors have been replaced and will be painted to match our color scheme.

As of May 12th, all drywall is hung and is being finished. All interior finishes have been delivered and are ready to be installed once painting is finished up. Be sure to keep an eye on our social media accounts for the most up to date information on the progress.

As the remodel approaches completion we are so thankful for the essential workers who have continued to come in and work through all the uncertainty. We're also thankful to all of those who donated to the project over the years and have allowed us to continue with a huge remodel project even in the midst of a global pandemic. We truly can't wait to hang out and drink a red mug of coffee with you all in this updated and reimagined space when the time comes.

Rainbow Trail Mission Statement

Rainbow Trail Lutheran Camp creates holy spaces that embody God's radical grace to affirm, empower, and transform all people to be Christ's light in the world

Trail Boss

By Dave Jarvis - Executive Director

Did any of us see this coming? Man, the world has radically changed in just 8 short weeks. And what our summer will look like has changed as well. I hope you read the lead article in this newsletter. It has all the details. As we were living into this plan of "Living into the Possibilities," I had the opportunity to share our plan on April 14th with LOM (Luther Outdoor Ministries) camps. As I was putting my presentation together, I realized that Rainbow Trail is in a unique position to be able to even consider stepping into this summer with our 64 summer staff, not even knowing if we will have a single week of camp on-site, and even with possibly no summer income. All of the work we have done the last ten years has put us in a place to even have the conversation: the experience of working and living through two forest fire evacuations; having zero debt because our policy that we don't build until we have the money in hand; having a style of program that is not site specific; having just completed an extensive strategic planning process where we learned again who we are as an organization with a new mission and vision statement; and an understanding that we don't just serve campers, but also our summer staff. This is who we are. This is in our DNA. The reality is that we hope campers will be arriving in a little more than a month and a half. It is an awesome opportunity that we can be a part of the faith development of so many of your children. We can't wait for summer to get here! We are ready to serve!

I know, for many of you, your life has been turned upside down by COVID-19. If your business has been affected, or you have even lost your job or been furloughed, know we are here to help. If you are considering registering your child for camp, or your child is already registered, know we have camperships available to help. This is why we have campership funds. There are no forms to fill out, and you don't need to share any private information. We have faithful donors that give specifically for camperships. Email me and let's talk. Don't let money be the reason for your kids or family not coming to camp. Take advantage of this opportunity to help your child have the best week of their summer at Rainbow Trail!

We hope our summer staff will soon be here! If all goes well, our Directors will arrive on May 25th and the rest of our ministry team should arrive sometime in early June. We are so excited about this team and all they will have to offer our campers. There are some great returners that you know and love. There are also some amazing new folks that you will fall in love with as well. Almost 50% of this staff is from the Rocky Mountain Synod. We began our on-line training with this crew the last week of March. Please keep this team in your prayers as they prepare for this summer. May God use them in unique and amazing ways this summer!!

The silver lining of this "Stay at Home" period is that two big projects of RTLCL are moving forward. The first draft of the Forest Service Feasibility Analysis for our land exchange has been written and is currently going through an editing and review process. From there, it will move to the USFS Regional Office for the valuation consultation and final review. We expect to know the results of the feasibility analysis by this fall. If we receive an affirmative result from the feasibility analysis, we will begin fund raising the remaining funds needed to complete all steps of the land exchange. For us to cover the remaining cost of the land exchange process itself and the multiple studies that are required and included in the exchange, we will need to probably raise around an additional \$190,000 to finish the exchange. If you are interested in making a gift to the land exchange, I'd love to hear from you! Be sure to earmark your gift "Land Exchange." Our persistence and perseverance will pay off. I have been working on this whole process for over ten years. We will own our site and it will be the biggest celebration when that happens! Thanks for walking this journey with us.

The second project that is moving forward is the Bristlecone Lodge remodel. Because construction workers are considered essential workers, construction has continued while our site has been shut down. We expect for the project to be completed by the first week of June. You are going to love the changes and the update to the entire building! Especially with all that has taken place during the last 7 weeks, we continue to need your support for this ministry through your prayers, through your gifts of time and energy, and through your financial gifts. I hope you know how much your gifts are appreciated. The outpouring this spring for Giving Tuesday to help support our "RTLCL at Home" online camp presence was unbelievable. And the support we have already received for summer staff salaries has us on a great path to cover that financial challenge. Even so, your annual fund gifts are still needed to help with our day-to-day operations. We already know that our summer income has been reduced due to the cancellation of summer camp Week #1. There are so many ways to support this ministry. Gifts of all sizes, large and small, make this ministry run. Thanks for believing in the power of this ministry!

I'll hope I will see you this summer! It is going to be a great one - unique, but great! I know we have a great full-time team to lead our staff. We have one of our most experienced summer director teams ever and they will be amazing! I can't believe we are already about to start another summer. Thanks for the blessing of serving you for another summer. This is summer #32 for me. I can't wait! See you soon!

Until next time...

Dave

The 14th Annual Grace Race



The date has been set! Plan on joining us on Saturday, October 3, 2020 for the 14th Annual Grace Race for World Hunger. The race will begin at 4 pm with check-in beginning at 2:30 pm. We will have our post-race party including grilling burgers and our awards

ceremony. We will also announce the winner of "The Fleetest flock" trophy a traveling trophy for the congregation with the most participants. Cross of Christ once again won the Fleetest Flock. We are once again partnering with the Rocky Mountain Synod World Hunger appeal. We are all going to need to get outside after all of our quarantine time. This will be a great way to get



Cross of Christ, Broomfield
"Fleetest Flock" Trophy Winners
2019



"LIVING INTO THE POSSIBILITIES", Continued from Page 1

This is so we can get our staff trained. That makes us very sad, but the reality is, if we want to have camp at all this summer, this is what we need to do. If your week is cancelled or you are cancelling on your own, we would like to give you three choices to consider for your deposit: 1) You can donate all or any part of your deposit and other payments you have made to Rainbow Trail. You can get a tax deduction for your donation, and you will help ensure that we are here to do ministry again in 2021; 2) We refund your deposit and other payments you have made, and you allow us to keep \$25 to help us offset administrative costs; or 3) We refund your full deposit and other payments you have made. We fully understand if this is what you need to do.

As of May 8th, the rest of the weeks of summer are still in play. The Colorado state and Custer County health personnel as well as our RTLCL Board of Directors will determine our next steps and when those will happen. We would prefer cancelling later, say even up to two weeks before your camp, than to just cancel now and find out later we could have done your week of camp safely. Know that we are expecting to use the same protocol of temperature checks with our campers that we are doing with our staff. We are also planning morning temperature checks for everyone during camp as well. If you are already registered, you have all of your forms already available online. Please be diligent about getting all of those filled out including your health form. We are beginning to send invoices for the remaining balance for your week of camp, knowing that refunds will be available if the week is cancelled or if you choose to cancel.

We know many of your own small businesses have been impacted by COVID-19 as well as many of you have

either lost your job or been furloughed. Know that we have Camperships available. This is why we have camperships, for situations just like this! Contact Dave Jarvis and he can help you work through the details. Don't let money be the reason your child doesn't come to camp this summer.

Plans are in motion to provide "RTLCL at Home," an online presence of camp with worship, Bible study, and interaction with our staff, for all weeks until campers can be at camp in person. There will also be a Day Camp version of "RTLCL at Home." Both programs of "RTLCL at Home" will be provided at no charge to the participants.

The CDC, in coordination with ACA, the American Camp Association, are creating guidelines for summer camps as we speak. As of this writing, we have not received those guidelines. These guidelines will lead us as we plan our next steps.

Rainbow Trail's response to this summer has come from an understanding of who we are an organization, and also from the fact that we believe we have a chance to be the church when people need it most. Sky Ranch, our sister camp to our north, has made the same decision. Our full-time staff has given multiple hours to create programming at all levels, no matter what the summer gives us. We believe God will walk with us in this journey.

People have been asking how they can help - first, pray for this ministry and for wise and innovative thinking; secondly, help support paying our summer staff salaries, or help support covering the expenses of "RTLCL at Home." You can give to both of these through our website. Thank you for your commitment and support of this ministry, and your trust in the leadership of this special place. We pray that we will see you this summer!

PARTNER CONGREGATIONS

Thanks to these congregations who have included us in their annual budgets!

Abiding Hope Lutheran Church, Littleton
Advent Lutheran Church, Olathe, KS
All Saints Lutheran Church, Albuquerque, MN
American Lutheran Church, Grand Junction
Ascension Lutheran Church, Colorado Springs
Ascension Lutheran Church Women, Colorado Springs
Atonement Lutheran Church, Boulder
Atonement Lutheran Church, Lakewood
Augustana Lutheran Church, Denver
Augustana Foundation Fund, Denver
Bethany Lutheran Church, Cherry Hills Village
Bethany Lutheran Church Foundation, Cherry Hills Village
Bethany Lutheran Church, Fredericksburg, TX
Bethel Lutheran Church, Aurora
Bethel Lutheran Church, Colorado Springs
Bethlehem Lutheran Church, Los Alamos
Black Forest Lutheran Church, Colorado Springs
Christ Evangelical Lutheran Church, Santa Fe, NM
Christ Lutheran Church, Highlands Ranch
Christ the King Lutheran Church, Colorado Springs
Christ the King Lutheran Church, Durango
Christ the Savior, Aurora
Christ the Servant, Louisville
Community of Joy Lutheran Church, Rio Ranch, NM
Cross of Christ Lutheran Church, Broomfield
Cross of Hope Lutheran Church, Albuquerque, NM
Cross of Glory Lutheran Church, Denver
Evergreen Lutheran Church, Evergreen
Faith Lutheran Church, Golden
Faith Lutheran Church, Security
First Lutheran Church, Colorado Springs
First Lutheran Church, Gypsum
First Lutheran Church, Longmont
Glory of God Lutheran Church, Wheat Ridge
Good Shepherd Lutheran Church, Glenwood Springs
Grace Lutheran Church, Boulder
Grace Lutheran Church, Colorado Springs
Holy Cross Lutheran Church, Wheat Ridge
Holy Cross Lutheran Church, Overland Park, KS

Holy Ghost Lutheran Church, Fredericksburg, TX
Holy Love Lutheran Church, Aurora
Holy Shepherd Lutheran Church, Lakewood
Holy Trinity Lutheran Church, Littleton
Immanuel Lutheran Church, Greeley
Joy Lutheran Church, Parker
King of Glory Lutheran Church, Arvada
King of Kings Lutheran Church, Pueblo
Lord of the Hills Lutheran Church, Centennial
Lord of the Mountains Lutheran Church, Dillon
Lutheran Church of Hope, Broomfield
Lutheran Church of the Holy Spirit, Centennial
Mount Calvary Lutheran Church, Boulder
Mount of the Holy Cross, Vail
New Beginnings Church, Denver
New Promise Lutheran Church, St. George, UT
Our Savior's Lutheran Church, Alamogordo, NM
Our Saviour's Lutheran Church, Ft. Collins
Peace in Christ Lutheran Church, Elizabeth
Prince of Peace Women of the ELCA, Colorado Springs
Prince of Peace Lutheran Church, Colorado Springs
Prince of Peace Lutheran Church, Denver
Rocky Mountain Synod
Shepherd of the Hills Lutheran Church, Canon City
South Zumbro Lutheran Church WOW, MN
Spirit of the Mountain Lutheran Church, Golden
St. Andrew Lutheran Church, Arvada
St. Luke Lutheran Church, Albuquerque
St. Paul Lutheran Church, Albuquerque
St. Paul Lutheran Church, Calhan
St. Peter Lutheran Church, Greenwood Village
St. Peter's Lutheran Church, Marble Falls, TX
St. Philip Lutheran Church, Littleton
St. Stephen's Lutheran Church, Northglenn
Tabor Lutheran Church, Pueblo
Trinity Evangelical Lutheran Church, Boulder
Trinity Lutheran Church, Fowler
Trinity Lutheran Church, Loveland
Trinity Lutheran Church, Monument
Zion Lutheran Church, Trinidad

Sight to Site

By Kyle Larson - Director of Site and Facilities

Happy spring to you all! I hope you've all been able to get out and enjoy the nice change of weather recently and finally get out of your homes for a much needed break from quarantine. I'm always surprised how quickly spring flies by and summer shows up for us here at camp. Lots to do and not much time to do it!

This spring has of course been very different for us at camp as I'm sure it has been for all of you in your homes and workplaces. I can confidently say that I've spent more time on video calls in the past few months than I have in the rest of my life combined. While it's been great to be able to work a little more remotely, it's been anything but business as usual compared to my normal prep work in the spring. As I'm sure you've been following, we have been doing a lot of planning for nearly every scenario of how summer may play out and feel like we've hit a place where we can finally start implementing some of the many scenarios that were planned. Although summer may look different, I'm proud of the work we've done as an organization to take everything in stride and make the best of our current situation. No matter how things play out, I know the summer will be meaningful for people that are able to engage with camp both online and in-person.



Although I've been spending a lot of time planning for what summer might look like, I've also been spending lots of time at camp getting the site ready for summer. No matter what, we feel we will be able to bring some people onsite this summer so there are certain normal things that need to happen no matter what. I'm certainly keeping busy. The nice thing about working onsite is that it's basically social distancing at its extreme so there really hasn't been much change to my life back and forth from camp. Still plenty of annual inspections and certifications to get checked off the list!

One of the biggest and most impactful weekends to the site each year is our annual Memorial Day work weekend. Based on state and county recommendations as well as the overall safety of all involved with that weekend, we had to make the hard call to cancel the weekend for this year. While it's hard for all of us not to be together for that weekend we are still planning some smaller service project work that we'll do with staff this summer to keep the site moving forward.

Probably the largest and most exciting project going on right now is the remodel of Bristlecone Lodge. Despite all of the craziness in the world, construction has still moved forward and things are coming along nicely. I'm hopeful that we'll be finished up before all of our staff show up for the summer. There's still lots of finishing work to be done but it's going to be great once it's finished up. I can't wait for all of you to see the finished product.

All of the uncertainty and social distancing lately has had me thinking a lot about how important it is for people to gather and be together once all of this is over. I'm excited and hopeful that camp can be that place this summer in some capacity. Hope to see you all in some way this summer!

Kyle



Weeks Are Almost Full - Register Today!

- | | |
|-------------------------------------|--------------------------------------------|
| Junior #1 Just 31 Left | RTLC South Just 49 spots left |
| Intro to Camp #2 Just 5 Left | JH Compass Points Just 5 spots left |
| Intro #3 Just 6 Left | Family Camp #2 Just 5 cabins left |
| Senior High #1 Just 2 Left | |

Check www.rainbowtrail.org for up-to-date status of each week and register today!

Things Are Looking Chipper

This spring we received a gift that has been on our wish list for years! Thanks to the generosity of Miles and Kim Brown as well as Wayne Guthals, we now have our very own chipper. We've been borrowing the forest service chipper each year to aid us in our fire mitigation efforts around the site. The chipper will be an incredible addition to our site and help us do more mitigation year-round rather than just during the summer! Thanks, Miles, Kim, and Wayne!

Thank You Tyler



We have been blessed with an incredible Program Assistant this year. If you've been at a retreat this year, you probably have met Tyler! He has been an incredible retreat host and brings gifts of hospitality and relational ministry.

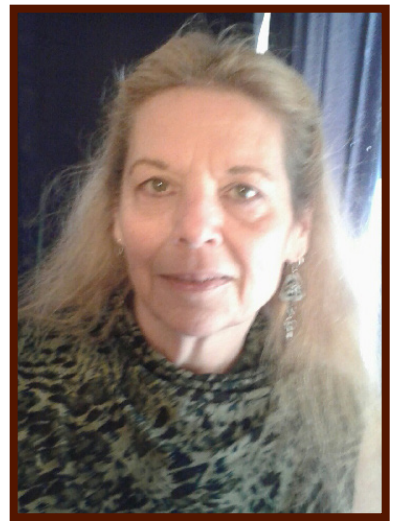
Tyler has been serving the PGA role by himself the second half of the year and has been a huge asset to work around the site, working with our online pop shop, and so much more!

We're excited to see Tyler's adventures in outdoor ministry continue as he heads back to the midwest for a summer at Lutherdale Bible Camp. God will go with you and we can't wait to see where that takes you next!

Chris' Corner

By Chris Seaman - Food Service Manager

Hello, to my RTLC family! I miss you all so much! I want to say thank you to my Nebraska/ Sheridan people! That retreat was my first back after my shoulder surgery, and the only one I got to do before the Pandemic shut us down! It was such a joy to be able to serve my ministry through you! Things have been quiet here in Silver Cliff, as I'm sure they have been at your house! My heart goes out to all of you with children at home; I have a hard time keeping two dogs and a cat entertained! I pray for happiness and harmony in your homes. In this time of never before seen rules and regulations, it brings joy to my heart to see so many people reaching out to help others. From people giving to the trucker's trying to keep the nation supplied, the people making masks for our nurses and doctors and first responders, those who manage to make birthdays, retirements, anniversaries, and life in general still a joyful thing, God Bless You!



As you can imagine, our ability to have camp this summer is very much up in the air. Never fear!

Dave Jarvis and our excellent Board of Directors are diligently working on several scenarios to try and give our people be it virtual or real; we will try to be a part of your summer!

I want to give you a couple of recipes that should be fun to make for all ages! These are also all recipes that I make every year for my Christmas trays! First, we will start with "Oreo Cookie Balls." These are fun to make with kiddos because they involve a lot of hands-on! So, you will need one 8oz package of softened cream cheese (take out of the wrapper and put in the microwave on 50% for 2 minutes). 36 oreo cookies finely crushed (put them in a zip lock bag and have the kids go to town with a rolling pin, or you could use a food processor). 16oz. Semi-sweet chocolate chips melted (on the stove in a double boiler or the microwave), That's it, 3 ingredients! You can also sub Nutter Butter cookies and dip in peanut butter chips or use Ginger Snaps and dip in white chocolate chips, oh the possibilities! Mix cookies crumbs and cream cheese till WELL combined! Shape into 48 - 1 inch balls and freeze for 20 minutes - dip balls in melted chocolate (I find using two toothpicks works well). Place on parchment-lined sheet and chill 1 hour or until firm. When shaping the balls, you can add surprises to the inside like maraschino cherries, hazelnuts, whatever you can dream up!

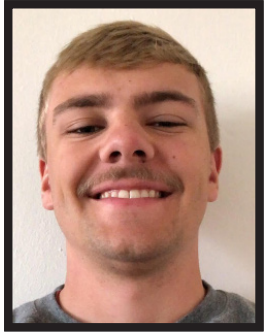
The next recipe only has 4 ingredients! This is homemade "Butterfinger's Candy." You will need

1 pound candy corn, 1-8oz jar peanut butter, 6oz chocolate chips, and 1Tbl. Shortening. First, place the candy corn in a glass bowl and microwave in 30-second intervals, stirring after each until melted and smooth. Stir in peanut butter and spread in an 8x8 greased pan. Smooth and press into corners. Melt chips and shortening and spread over candy. Chill 30 minutes. Pop-out of pan and cut into squares; these are very rich! Use the candy crumbs leftover on ice cream, french toast, or pancakes! I hope you have fun with these! So, in closing, I will be praying for you all! Please take care of yourselves and each other. And always remember, God, Is Great! I love and miss you all!

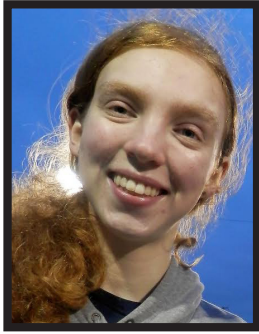
-Chris

- **ORDER RAINBOW TRAIL BLEND FOR YOUR CHURCH!**
- Tired of Folgers? You can order 5 pound bags of delicious, fresh-roasted,
- whole bean or ground Rainbow Trail Blend coffee online! What's even
- better is that all profits of RTLC's unique coffee blend provide funds for
- kids to come to camp! Start ordering delicious coffee with a purpose for
- your congregation today by going to shop.rainbowtrail.org!

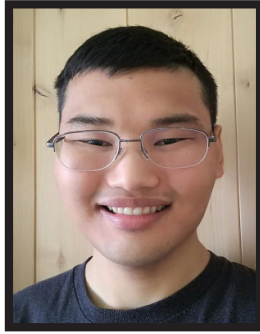
Now THIS is What You've Been Waiting for...



Sam Walmer
Counselor
University of Colorado
Littleton, CO



Kjersti Olson
Counselor
Augustana University
Lake City, IA



Matt LaJoy
Counselor
Montrose, CO



Sadie Nutt
Counselor
Northern Arizona University
Las Cruces, NM



Evan Lieber
Bridging Borders Director
Luther College
Colorado Springs, CO



Faith Bartelt
Bridging Borders Director
Viterbo University
Rhineland, WI



Anna Saathoff
Camphand
Pueblo County High School
Pueblo, CO



Julia Craft
Office Assistant
University of Northern CO
Thornton, CO



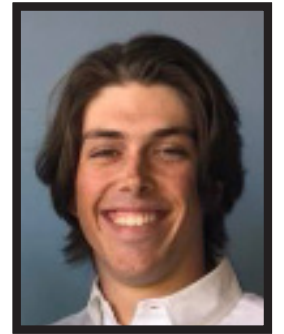
Zack Stoffel
Counselor
Milwaukee School of Engineering
Onalaska, WI



Kaycie Kolk
Counselor
University of Colorado
Lakewood, CO



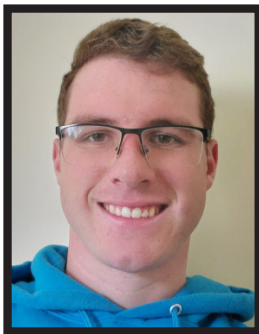
Macy Pedersen
Counselor
Beloit College
Eden Prairie, MN



Will Johnson
Counselor
University of Arkansas
Austin, TX



Mariah Balajadia
Counselor
Luther College
Guttenberg, IA



Matt Meline
Ropes Coordinator
University of Wyoming
Eagle, CO



Abigail Wiggans
Woodcarving Instructor
Colorado State University
Denver, CO



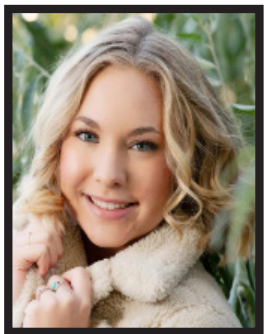
Sara Hess
Counselor
Azusa Pacific University
Highlands Ranch, CO



Megan Kleen
Arts & Crafts/Pottery Instructor
University of Montana
Fort Collins, CO



Kaleb Hinkle
Counselor
Colorado Mesa University
Grand Junction, CO



Annie Dietz
Kitchen Assistant
Horizon High School
Thornton, CO



Tessa Leonard
Counselor
Colorado State University
Littleton, CO



Kaysie Carlson
Videographer
MN State Technical College
Brainerd, MN



Sands Simonton
Summer Facilities Director
Colorado State University
Eagle, CO



Haylee Hayden
Counselor
University of Northern CO
Los Alamos, NM



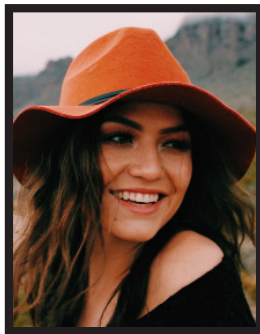
Elliot Fehlen
Counselor
UW - Eau Claire
Rhineland, WI



Zach Regennitter
Camphand
Falcon High School
Colorado Springs, CO



Connor Peterson
Bridging Borders Director
Pacific Lutheran University
Denver, CO



Yliana Kolosseus
Counselor
Northern Arizona Univ.
Las Cruces, NM



Kylie Rivera
Ropes Coordinator
University of Northern Colorado
Monument, CO



Rob Laurie
Camphand
STEM - Highlands Ranch
Highlands Ranch, CO



Harper Bolz-Weber
Maintenance Assistant
Pacific Lutheran University
Denver, CO



Paige Dayton
Camphand
Lews-Palmer High School
Monument, CO



Francisco Aragon
Counselor
Pacific Lutheran University
Tacoma, WA



Rebecca Flerchinger
Camphand
Mead High School
Monument, CO



Elyse Phillips
Counselor
Northern Arizona University
Los Alamos, NM

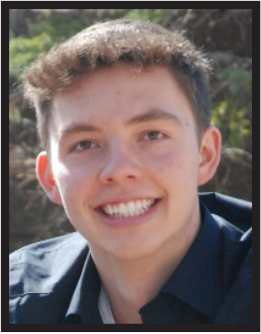


Abbie Grinager
Counselor
Luther College
Sioux Falls, SD

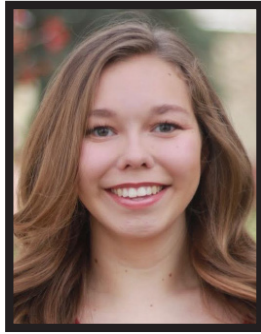


Paul Jordan
Bridging Borders Director
Wartburg College
Viroqua, WI

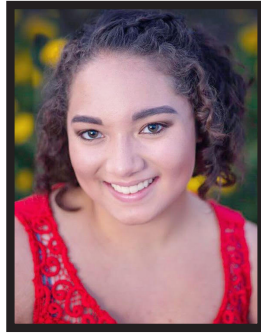
...The 2020 Rainbow Trail Summer Staff



Eric Meyer
Counselor
Colorado State University
Albuquerque, NM



Abby Mortinsen
Arts & Crafts/Pottery Instructor
University of Northern CO
Centennial, CO



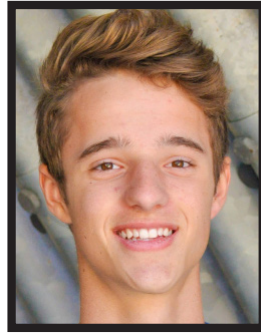
Mikylea Isidore
Counselor
University of Nebraska
Peyton, CO



Maddie Bass
Counselor
UNC - Chapel Hill
Elon, NC



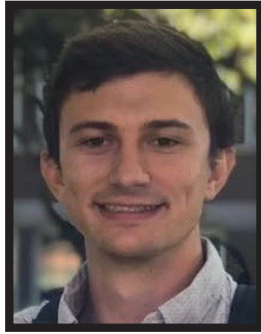
Dalton Bunnell
Compass Points Director
Wartburg College
Oskaloosa, IA



Joe Douglas
Counselor
Colorado State University
Fort Collins, CO



Inger Smuts
Bridging Borders Director
California Lutheran Univ.
Palo Alto, CA



Hank Freese
Compass Points Director
Augustana University
Sioux Falls, SD



Jonah Hanson
Counselor
Colorado Mesa University
Burlington, CO



Carla Herbig
Camp Nurse
Fredericksburg, TX



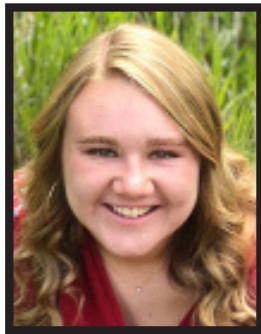
Danielle Karch
Travel Director
Univ. of Wisconsin-LaCrosse
Amherst, WI



Adam Schmuck
Camphand
Wartburg College
Denver, CO



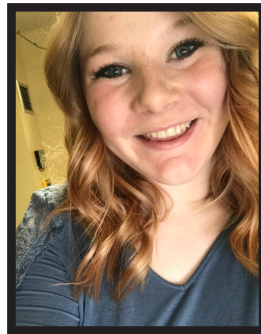
Ryan Gilstrap
Counselor
Wartburg College
Evansdale, IA



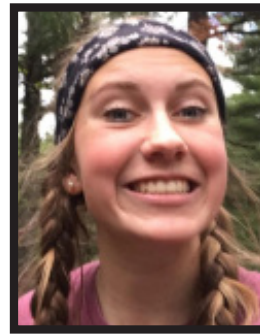
Beka Gershenoff
Camphand
Wartburg College
Edwards, CO



Rebekah Stelze
Guitar Instructor
University of Iowa
Lincoln, NE



Sonja Iverson
Support Staff Director
Wartburg College
Oskaloosa, IA



Erin Farrell
Counselor
University of Minnesota
Eden Prairie, MN



Madison Kersey
Kitchen Assistant
University of New Mexico
Rio Rancho, NM



Kylie Pedersen
Compass Points Director
St. Norbert College
Eden Prairie, MN



Abby Mudgett
Counselor
Northern Arizona University
Broomfield, CO



Micah Spruth-Janssen
Support Travel Director
University of Nebraska Kearney
Johnson, NE



Micah Walt
Counselor
UW - River Falls
Hastings, MN



Sami Larsh
Counselor
Azusa Pacific University
Granite Bay, CA



Sam Marold
Counselor
University of Iowa
Ankeny, IA



Kelly Marsh
Counselor
Metro State University
Loveland, CO



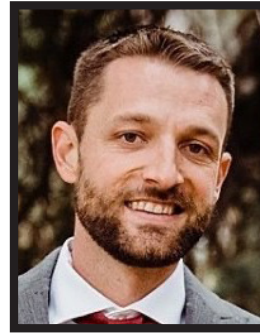
Matt Turman
Maintenance Assistant
Texas State University
Austin, TX



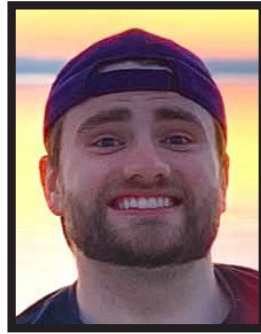
Sam Coenen
Counselor
University of Iowa
Ankeny, Iowa



Ben Ackermann
Counselor
Iowa State University
Lake City, MN



Kyle Larson
Director of Site & Facilities
Salida, CO



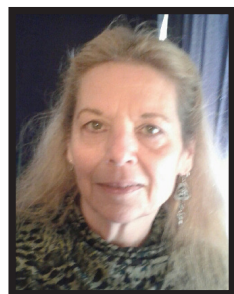
Cam Regennitter
Director of On-Site &
Bridging Borders
Colorado Springs, CO



Maggie Brakke
Director of Compass Points
& Day Camp Ministries
Colorado Springs, CO



Daniel Kirschbaum
Director of Retreat
Ministries
Colorado Springs, CO



Chris Seaman
Food Service Manager
Hillside, CO



Tammi Schneider
Executive Secretary
Penrose, CO



Aurice Worley
Bookkeeper
Cañon City, CO



Dave Jarvis
Executive Director
Cañon City, CO

Nellie Jarvis
Intro Camp Director
Cañon City, CO

Camp Vibes

By Cam Regennitter - Director of On-Site & Bridging Borders

As I sit here in Nebraska's great state, gaze over the landscape that fills with green grass, tall pine trees, lots of birds in the air, and a photographic shot of Lake McConaughy. I don't get up here a lot like I used since I have worked at Rainbow Trail, but that makes it even more special when do. My family owns a cabin near Lake McConaughy, which is 15 minutes west of the town of Ogallala, Nebraska, and it is our home away from home. Being in a rural area, it is quiet most of the day, with a small number of people around besides our two neighbors. That is the opposite of what Colorado Springs is like, so the change of pace helps me recharge and be ready to go when I head back home.



Rainbow Trail is that for a lot of people, so am excited about the ministry that will be present this summer! Whatever it looks like, I am glad to be a part of a Full-Time Team that cares so much for its ministry, its campers, and its staff. We are committed to all of you to show God's love in so many different fashions than we thought we would at the beginning of this year. Even though we had to cancel all of our Bridging Border Trips this summer, I can't wait to see the On-Site program thrive in creativity!

As 2020 has affected many people in many ways, we have to remember that there is still so much good. I would personally like to thank all the good the RTL community has provided this year so far. From the donors that gave to camp from Summer Staff Salaries to Giving Tuesday and everything else. Thank you to the families who are sharing their thoughts and ideas of how summer could look best for them. I appreciate the summer staff who have stayed committed and are ready to provide their best ministry for this summer. The color of the staff mugs will be unique for sure, nothing like it! I want to thank our Board of Directors for being the best out there. None of what we are doing would be possible without them. Also, thank you to Maggie, Kyle, Daniel, Chris, Aurice, Tammi, and Dave. This team is something so unique and is the dream team for a time of a pandemic. The work put in, and the work to be put in will never go unnoticed, and I am so happy to be a part of this crew.

As for myself, life is so good! There has been, like many of you, time of creative problem solving and self-reflection. Getting outside and physical activities have been a priority. My brother is a senior in high school, so we have spent a lot of time together and still make his senior year a good one. I can't wait to have him on staff this summer! My sister's husband will be in South Korea for a year with the Air Force, but after will be stationed in Colorado Springs at Schriever Air Force Base. It will be great to have those two around as they move forward with their married life. My parents continue to thrive in life, showing us kids how to make the best of tough situations. I love you guys so much!

Blessings to all of you and your loved ones! See you soon!

Cam

Men's Retreat September 24th-27th

Join us this fall for our Men's and Women's retreats! Men's retreat this September will be full of fly fishing, hanging out with the guys, and amazing worship and conversation led by Pastors Dave Risendal and Roger Thompson. Their deep love of fly fishing and the gospel will help you re-center and deepen your faith. Expand your fly fishing skills with instruction from Ark Anglers Fly Shop, fly tying workshops, and advice from seasoned fishermen.

Womens's Retreat October 9th-11th

Our Women's retreat, led by Missie Bonser is always a weekend filled with deep joy and deep connection. Enjoy all the activities camp offers like archery, crafts, and hike. Be ready to laugh and be in fellowship with ladies as you dive into community, worship, and scripture. We're excited to see you this fall at Rainbow Trail!

Summer Staff Salaries

As unique as the year 2020 has been to us so far, Rainbow Trail decided to stay committed to its summer staff by guaranteeing their job at RTL. With that, we have been fundraising for summer staff salaries. We are currently at \$46,641 and are inviting you to give today. Thank you to the following who have given already:

- Anonymous
- Daniel Austin
- Mark & Karen Bentz
- Swan Ellert
- Kevin & Tracey Engelhardt
- Craig & Beverly Essex
- Abbie & Steve Freeman
- Beth Graham
- Hannah Harman
- Janet & Scott Harrison
- David & Sharon Henneke
- Dave & Nellie Jarvis
- Matt & Catherine Larson
- Kenna & Lisa Lawson
- Dawn & Brent Meyer
- Elsa Meyners
- Ken & Sheryl Mielke
- Kristen & Sean Murray
- James Myra
- Michelle & Dave Okes
- Kim & John Olson
- Karen & Scott Pedersen
- David & Edie Phillips
- Charlie & Claire Pineda
- Anndi Russell
- Ann & Newton Seitzinger
- Kathryn Schmidt
- Russ & Cheri Sorensen
- Karen & Richard Stenger
- May & Pr. Michael Tassler
- Robert & Denise Tristano
- Aurice & Bob Worley
- Laura Wouters
- Memory of Mary Benson
- Clark Windmueller

Giving Tuesday Donors

The following individuals donated Giving Tuesday on May 5th, 2020. It was a successful day that will be going towards "RTL at Home." At the end of the day, the Rainbow Trail community raised \$12,411. Thank you to everybody who took part on this special day!

- Marlene & Darin Arnold
- Cindy & Mickey Bannister
- Brian Bonser
- Larry & Levona Brown
- Christina Brown-Erickson
- Stacy & Cory Budaj
- Rebecca Burris
- Kirsten Bush
- Elizabeth Byer
- Alexis Carey
- Jessica Craver
- Andrea Doeden
- Traci & Phil Dorth
- Mike and Bonnie Ensrude
- Steven Erickson
- Edith Ericson
- Todd Feedback
- Elaina Fenstermacher
- Donald & Lil Filegar
- Susan & Dave Fisk
- Carol & Regan Foust
- Chloe Foust
- Cyndi Gershenoff
- Steve & Judy Gunnlaugsson
- Dave Gunnlaugsson
- Janelle Hernandez
- Kathy & Dirk Hogue
- Dave and Nellie Jarvis
- Jane Jebson
- Kyra Jensen
- Derek Kane
- Daniel Kirschbaum & Jonny Tippetts
- Christy Klemz
- Roger and Claudia Larson
- Katie Larson
- Kyle Larson
- Christopher Lovagnini
- Tonya & Jack Major
- Theodore McNitt
- Dawn and Brent Meyer
- McKenzie & Seth Moellering
- Bob & Linda Morton
- Lori Morton
- Megan Myers
- Patti Nelson
- Beth & Dave Newsom
- Craig & Vonda Orton
- Jennifer & Brett Palmer
- Mark & Heidi Peterson
- Scott Wiggans & Susan Pfabe- Wiggans
- Melissa Pforr
- Edie May & David Phillips
- Alissa & Josh Plumley
- Cam Regennitter
- Leo Riedel
- Rick & Becky Romano
- Katie & Ben Rude
- Kristen & Mike Saathoff
- Kalie Saathoff
- Jana Schofield
- Ryan & Mandy Sevier
- Austen Smith
- Beth & Evan Smith
- Mareda Smith
- Mary Sorenson
- Jim & Pat Speckmann
- Michele & Eric Stoutenborough
- Rachel Stoutenborough
- Tim & Susan Thies
- Sara Tinklenberg
- Colin Twaddell
- Bolko and Sue Von Roedern
- Brandon and Jennifer Wade
- Robert and Renee Wade
- Tim & Jen Walmer
- Lisa & David Young
- In Memory of Ruth Masters
- Karen & Ernie Cordova
- In Honor of Vonda Craig
- Charlene & Rick Coulson
- In Memory of Dave Kerberg
- Holly & Bob Denning
- In Honor of Kruncle Klars
- Ben & Jordan Jarvis
- In Honor of Russ Gordon
- Bryan & Amy Jaster
- In Honor of Kylie Stitt
- Heather & David Kinz
- In Honor of Kristin Lynn
- Randall & Phyllis Lynn

The Lion's Den

By Daniel Kirschbaum - Director of Retreats



I was worried that with everything going on in the world, I would miss the buzz and energy that comes from this time of year. With retreat season closing, program assistants moving on, and summer beginning there is always a lot going on! However, I'm learning that the energy is still present and I have renewed hopes about how we're moving forward in ministry, even if it looks a little different this year.

Our retreat season did end a bit early and missing some of our spring regulars was certainly difficult. I look forward to The Summit, our retreat for folks in Youth and Family Ministry, every year with great anticipation. I simply love gathering with the people that are doing similar work across this

synod. Fortunately, we've had the opportunity to gather digitally which has been a joy in the midst of many many Zoom calls. It's been exciting to jump into the creative ways people are finding to be together!

One of those ways has been Rainbow in The Sky! If you haven't seen it on Facebook, Rainbow Trail partnered with Sky Ranch and the Rocky Mountain Synod to create a 6-week video series of live or nearly live devotions. Everyday Monday-Thursday at 3:00pm we had the opportunity to join folks in an online community with prayer, song, skits, some scripture, and more. It was an absolute gift to see how many folks engaged with us. We were able to take prayer requests, song requests, skit requests, drawing requests, and plenty of other words of thanks and praise to our awesome God in the comments. For about twenty minutes of the day, it felt like camp and I'm so thankful for it.

As we move into the summer I'm looking forward to seeing many of you either at camp or in digital spaces as we navigate what this summer will look like with our incredible team of young adults. This time reminds me even more just how supported this place is by the entire Rainbow Trail community. Thank you for doing ministry with us and being a part of our lives here at Rainbow Trail. I can't wait to see you on the mountain soon.

Daniel

ANN (JARVIS) SMITH MEMORIAL LAND EXCHANGE FUND

- | | |
|------------------------------------------------------------------------------------------------------------------------------------------------------------------------------------------------------------------------------------------------------------------------------------------------------------------------------------------|-------------------------------------------------------------------------------------------------------------------------------------------------------------------------------------------------------------------------------------------------------------------------------------------------------------------|
| Paul and Kathy Edstrom
Thrivent Financial

In Memory of Sandra Kistler
Margaret and Norm Aarestad
Nathan Bledsoe
Larry and Eleanor Bonicelli
Doug and Betty Boyd
Debbie and Rex Carter
Kathleen Christensen
Lois Fees
Kim and Dave Guinn
James HytJan and Kay Hytjan
Steven and Debra Kinz | Larry Kruse
Severt and Mary Kvamme
Bert and Dolly Lager
Donald and Kay Lucas
Alison Lueders
Kathleen Nelson
Orvid and Lois Olson
Gary Owen
Timothy and Bridget Patrick
Herbert Schillereff
Richard Sloneker

In Memory of Pastor Tom Guinn
Janice and James Mulvany |
|------------------------------------------------------------------------------------------------------------------------------------------------------------------------------------------------------------------------------------------------------------------------------------------------------------------------------------------|-------------------------------------------------------------------------------------------------------------------------------------------------------------------------------------------------------------------------------------------------------------------------------------------------------------------|

TRAILBLAZERS

The following individuals are members of the 2020 Trailblazers Club. Trailblazers is an annual giving club that keeps the ministry at Rainbow Trail alive and growing. To join, contact Dave 719-276-5233 or check out the "Donate" portion of our webpage at www.rainbowtrail.org. Many thanks to the following supporters of Rainbow Trail!

- | | | |
|--------------------------------------------------------------------------------------------------------------------------------------------------------------------------------------------------------------------------------------------------------------------------------------------------------------------------------------------------------------------------------------------------------------------------------------------------------------------------------------------------------------------------------------------------------------------------------------------------------|-----------------------------------------------------------------------------------------------------------------------------------------------------------------------------------------------------------------------------------------------------------------------------------------------------------------------------------------------------------------------------------------------------------------------------------------------------------------------------------------------------------------------------------------------------------------------------------------------------------|-----------------------------------------------------------------------------------------------------------------------------------------------------------------------------------------------------------------------------------------------------------------------------------------------------------------------------------------------------------------------------------------------------------------------------------------------------------------------------------------------------------------------------------------------------------------------------------|
| Eagle Peak Club
\$500-\$999
Anonymous
Lannette Abbey
Mark and Karen Bentz
Jerry and Joan Brown
Jeff and Trisha Carlson
Vince and Leigh Felletter
Peder and Noel Hansen
Hannah Harman
Stanley and Evelyn John
Lindsay Lafferty
Todd and Mary McNeil
Kim and John Olson
Marcia Oppermann
Kevin and Darlene Rohrbaugh
Carl and Emily Sauey
Mark and Anne Schwartz
Russ & Cheri Sorensen
Karen & Richard Stenger
Donald and Joyce Stephens
Linda Stuehrenberg
Tim and Jen Walmer
Laura Wouters
Ron and Betty Yergert | Rainbow Lake Club
\$250-\$499
Anonymous
Dawn & Shannon Ambrosio
Liza and Nathan Blom
Stephanie Carlberg
Jason and Kellie Davis
Ina Kay and Tom Devers
Andrea Doeden
Carl and Katie Edstrom
Swan Ellert
Ede Ericson
Kris Ericson
Ken and Kay Gerhart
Fred Hansen
Lynda Koenig
David and Michelle Louis
Judith Neve
Dave and Judy Peters
Jim Ruden
Kathryn Schmidt
Betsy and John Tuma

Base Camp
\$120-\$249
Anonymous
Edna Anderson
Keith Brakke and Margaret Laforge
Christen and Andrew | Brown
Jack and Phyllis Brown
Jacob and Becca Dolan
David Dorow and Wendy Clark
Fred and Nancy Dorth
Phil and Dee Erlander
Barbara and Chuck Exley
Scott and Sue Fernau
Mia and Scott Harberts
Ron and Katy Harder
Victor and Lois Hoops
Ruth Idler
Kitty Jarvis
Clay Johnson
Karen and Vineet Joshi
Daniel Kirschbaum and Jonny Tippetts
Chad and Aly Kohlmeyer
Herbert Korff
David Kumpe and Rosemarie Wipfelder Kumpe
Bert and Dolly Lager
Jean Larson
Stephanie Lord and William McHardy
Tim and Sandra Maxa |
|--------------------------------------------------------------------------------------------------------------------------------------------------------------------------------------------------------------------------------------------------------------------------------------------------------------------------------------------------------------------------------------------------------------------------------------------------------------------------------------------------------------------------------------------------------------------------------------------------------|-----------------------------------------------------------------------------------------------------------------------------------------------------------------------------------------------------------------------------------------------------------------------------------------------------------------------------------------------------------------------------------------------------------------------------------------------------------------------------------------------------------------------------------------------------------------------------------------------------------|-----------------------------------------------------------------------------------------------------------------------------------------------------------------------------------------------------------------------------------------------------------------------------------------------------------------------------------------------------------------------------------------------------------------------------------------------------------------------------------------------------------------------------------------------------------------------------------|

PATHFINDERS

The following individuals are members of the 2020 Pathfinders' Club. Pathfinders is RTLCL's next level giving club that keeps the ministry at Rainbow Trail growing and expanding. These individuals have given \$1,000 or more to this great ministry. To join, contact Dave Jarvis 719-276-5233 or find out more and donate online at www.rainbowtrail.org/donate. Many thanks to the following supporters of Rainbow Trail!

- | | | |
|---------------------------------------------------------------------------------------------------------------------------------------------------------------------------------------------------------------------------------------------------------------------------------------------------------------------------------------------------------------------------------------------------------------------------------------------------------------------------------------------------------------------------------------------------------------|-------------------------------------------------------------------------------------------------------------------------------------------------------------------------------------------------------------------------------------------------------------------------------------------------------------------------------------------------------------------------------------------------------------------------------------------------------------------------------------------------------------------------------------------------------|--------------------------------------------------------------------------------------------------------------------------------------------------------------------------------------------------------------------------------------------------------------------------------------------------------------------------------------------------------------------------------------------------------------------------------------------------|
| Challenger Peak
\$1,000-1,499
Anonymous
Roger and Alice Aden
Stacy and Nicholas Branca
Emily & Scott Dalen
Chris and Stephanie Frankle
Annie and Jeff Heath
David and Sharon Henneke
Mary Koepf
Holly and Nick Massie
Hunter and Janet McDaniel
Dawn and Brent Meyer
Jill and Douglas Monsen
Caitlin and Josh Nelson
Chuck and Gayle Newell
Jon and Kate Palmquist
Dave and Betsy Risendal

Long's Peak
\$1,500-2,499
Anonymous
Melissa Beaman
Rosetta Bidne | Rick and Charlene Coulson
Gloria and Joel Friesenegger
Tom and Shari Gould
Janice and James Mulvany
James Myra
Michelle and Dave Okes
Matt and Wendi Rusch
Kathy and Craig Twaddell
Kate and Eric Waggoner

Mt. Elbert
\$2,500-\$4,999
Anonymous
Tom and Alison Buckett
Shelly and Gerry Clemen
Phil and Traci Dorth
Janet and Scott Harrison
Ann Hultquist and Roger Loots
Vicki and Christian Lieber
Steve and Cheryl Mahon
Austen Smith
Michelle and Robert Szydowski | Mt. Princeton
\$5,000-\$9,999
Anonymous
Katie Dugan
Janice Ehlers
Kevin and Tracey Engelhardt
Dave and Nellie Jarvis
David and Rebecca Kleen
Jeanne and Tim Maloney
David and Edie Phillips

Crestone Peak
\$10,000-\$14,000
Randy & Lisa Schrader

Mt. of the Holy Cross
\$20,000 plus
Janice Ehlers
Nette & Kevin Werling
Bob & Joyce Witte |
|---------------------------------------------------------------------------------------------------------------------------------------------------------------------------------------------------------------------------------------------------------------------------------------------------------------------------------------------------------------------------------------------------------------------------------------------------------------------------------------------------------------------------------------------------------------|-------------------------------------------------------------------------------------------------------------------------------------------------------------------------------------------------------------------------------------------------------------------------------------------------------------------------------------------------------------------------------------------------------------------------------------------------------------------------------------------------------------------------------------------------------|--------------------------------------------------------------------------------------------------------------------------------------------------------------------------------------------------------------------------------------------------------------------------------------------------------------------------------------------------------------------------------------------------------------------------------------------------|

The Brak Pack

By Maggie Brakke - Director of Compass Points & Day Camp

What a way to start my first year with Rainbow Trail! A global pandemic! Throughout all of the inevitable uncertainties, I have been overwhelmed with gratitude for my team's steadfast passion, creativity, and commitment to one another. Similarly, I am moved daily by the confidence and partnership found in my Compass Points and Day Camp contacts. If nothing else, the last two months have been a crash course of this community's deeply rooted strength and commitment to our mission.



It is my hope you are finding ways to have a little fun during this time of change. While adapting to a new routine at home, I have been trying to practice the things I always said I would if I had more time. Some of these newfound/newly practiced hobbies include overly attending my herb garden, perfecting my pizza dough recipe, and solo dancing around my apartment- to the disdain of the apartment downstairs.

In an unofficial week of "passing the torch" my predecessor Sam Berglund and I will be working our way through all of the Compass Points trails. No hail, rain, snowdrifts, or wild winds could hold us back from getting up to Music Pass to watch fog roll through the valley earlier today. Whatever this summer brings, I cannot wait to start shuttling groups out into this unkempt, awe-inspiring wilderness. Speaking from experience, after weeks of quarantining in my Colorado Springs apartment, there is nothing quite like the freedom of exploring the Sangre De Cristos. I cannot wait to get you all out here!

Maggie

Grace and Peace,

Save The Date: Colorado Gives Day for 2020

Support RTLCL on the 11th Annual Colorado Gives Day! Save the date! On Tuesday, December 8, 2020. Coloradans will come together again to raise millions of dollars for nonprofits like Rainbow Trail. Last year, a remarkable \$39.6 million was distributed to 2,569 Colorado nonprofits. RTLCL raised an amazing \$80,531 in that 24-hour period. With the support received in 2019, we have set a goal for 2020 of \$85,000! All funds raised will go towards our Annual Fund. As you know, this has been year where our summer program income will be greatly affected by COVID-19. We need a great Colorado Gives Day to end the year strong. Also, we are still in the middle of the land exchange process and some people have shifted their annual fund donations towards that Capital appeal. We still need our annual funds to sustain our day-to-day operations. Mark your calendars and make a difference!

1STBANK

12.8.20

Make a Difference and Give Your Business a Shout Out at Grace Race

Every fall, Rainbow Trail Lutheran Camp hosts its annual Grace Race to help stamp out world hunger. This annual 5k run/walk was started as part of RTLCL's 50th anniversary in 2007, to raise money for the ELCA World Hunger Appeal. The event is held in collaboration with the Rocky Mountain Synod Hunger Network. Over the last thirteen years, the Rainbow Trail community has contributed \$67,454.13 to the ELCA World Hunger Appeal. But we think we can do more. The 14th Annual Grace Race will be held on Saturday, October 3, 2020. We are aiming for 350 participants for this year's race. This can be the year we top \$10,000 for the check that we send to the ELCA World Hunger Appeal!! Another great way to support this event and cause is to advertise your business on the classy Grace Race tech shirts. For a \$300 donation, we will add your company name and logo to the race shirt. There will also be a link for your business off of the RTLCL Grace race webpage. We'll give your business some great press at the race and you will help make an incredible difference in our world. Contact Dave Jarvis at dave@rainbowtrail.org for more details.

Want To Make A Difference?

Give a gift to Rainbow Trail and invest in the faith lives of thousands of kids. In today's economy there is no better return!

Donate www.rainbowtrail.org
Online Anytime



Rainbow Trail 2020 Events Calendar

- May 27- June 8.....Staff Training
- June 9- August 18.....Summer Camps
- September 4-7.....Labor Day Family Weekend
- September 24-27.....Men's Fly Fishing Retreat
- October 3.....Grace Race 5k (Denver)
- October 5-11.....Women's Retreat
- October 16-18.....Confirmation Retreat
- October 23-25.....Fall Ambassadors Retreat
- November 20-22.....Senior High Retreat
- Dec 4-6.....AdventFest

www.rainbowtrail.org

Bristlecone Remodel

- Phil and Traci Dorth
- Bethlehem Lutheran Church
- Daniel Kirschbaum and Jonny Tippetts
- Stephanie Salazar
- Paul and Lisa Smith
- Marsha Yosten
- Medtronic Foundation

ORGANIZATIONAL GIFTS

- | | |
|---------------------------------|------------------------------------|
| Anonymous | Oppenheimer Funds |
| Benevity Community Impact Fund | The Ewing Family Foundation |
| Boeing | Thrivent Financial |
| Community Foundation Boulder Co | Thrivent Personal Donation fund of |
| DST Systems, Inc. | InFaith Community Foundation |
| Medtronic Foundation | Verizon Foundation |
| Minneapolis Foundation | |

CONTRIBUTORS

Thank you to the following friends of Rainbow Trail who gave a gift in 2020

- | | |
|----------------------------|----------------------------------|
| Anonymous | Kristin and Christian Nisonger |
| Judi and Steve Axthelm | Vern and Ruth Ann Regennitter |
| Alan Beals | Graham and Sandy Rinehart |
| John and Kay Bengston | Diane and Greg Smith |
| Lisa Boe-Sims | Lloyd Stivers |
| Linda and Stephen Daniel | Pat and Rob Suter |
| Carol and Regan Foust | Gaylene Szaltzer |
| Eric and Carolyn Gustafson | Robert and Michelle Thomsen |
| Derek Kane | Tania Ventura and Jeff Hollender |

GIFTS IN KIND

- | | |
|--------------------------------------------------------------------------------------------------------------|--------------------------------------------------------|
| Ascension Lutheran Church - Wheel Barrel full of office supplies, gloves, bedding, towels and shop supplies. | Laptop |
| Mary Koepf - 2 boxes of 250 9x12 envelopes | Aurice and Bob Worley - Shelving unit for storage |
| Brad and Carissa Nietfeldt - Macbook Pro | Volunteers for Outdoor Colorado - 12 cans of bug spray |

DESIGNATED GIFTS

- Miles and Kim Brown- Chipper
- Wayne Guthals- Chipper
- Dave and Nellie Jarvis- Shelving

GIFTS IN MEMORY OF

In Memory of Tom Guinn

- KP and Lynn Davis
- Carl and Katie Edstrom
- Bill and Sharon Gorman
- Marianne Guinn
- Kurt and Mary Haeger
- Dave and Nellie Jarvis
- Marianne Mooney
- Sarah Passarelli
- Gene and Angie Youngmann

In Memory of Grandpa Dave Ericson

- Tim Asselin
- Edie Ericson

We make every effort to list each donor, but mistakes do happen. If we have inadvertently omitted your name or listed you incorrectly we apologize. Please call us, 719-276-5233, and let us know so that we can make corrections.

A different, yet significant way to support the ministries of Rainbow Trail

Needs List



These are essential items needed for our day-to-day operations. A designated monetary gift would certainly be welcome as well. You can bring these items with you any time you come to camp or call us to arrange a drop-off or pick-up. Thank you for your continued support!

- | | |
|---------------------------------------|----------------------------------------|
| White 20# copy Paper (Laser quality) | 9x12 Manila envelopes (no clasps) |
| Reams of colored copy paper | 6x9 Manila Envelopes (no clasps) |
| Avery 5366 Labels | 10x13 Manila Envelopes (no clasps) |
| Avery 5164 Labels | 12 - 5 ft. round white Lifetime tables |
| Nalgene Water Bottles (40) | Rain Jackets & Rain Pants |
| Masking tape | 25-gallon Rubbermaid tubs (24) |
| Scotch Tape | On-Site and Compass Points Day Packs |
| Duct Tape | Foam Brushes - 1" |
| Packing Tape | Paintbrushes - all sizes, inexpensive |
| Postage stamps | White File Folder Labels |
| 8.5x11 Yellow Tablets | 21 Gallons of Handsanitizer |
| 8 ft. Rectangle "Lifetime" tables (5) | 400 Disposable Masks |
| Long barreled fire lighters (Bic) | 2 Cases of Lysol or Clorox Wipes |

Wish List

These are larger items that we haven't budgeted for, but would love to have. Contact us if you would like to donate any of these items, new or gently used. You can bring them to camp, or call to arrange a drop-off or pick-up. Thank you for your continued support.



- | | |
|-----------------------------------------|----------------------------------|
| Heavy Duty Cotton Work Gloves | GoPro HERO7 Silver |
| Industrial Mop buckets (call us first!) | Vermeer Brush Chipper |
| Sturdy Wheelbarrows | Freezerless Refrigerator |
| New Full or single mattress pads | Dish Cart |
| New Queen sheets - white | Phillips 60W & 100W Dimmable LED |
| New Queen mattress pads | Bulbs |
| New 3-piece towel sets (20) | Skid Steer Tire Chains |
| Shark Navigator vacuums (4) | Used Day Camp Vehicle |
| Free Standing Space Heaters (3) | |

Shop Online

It's easy to give a gift from RTLCL's Needs or Wish Lists online. We've pre-selected items that we are looking for and provided links straight to great deals that we've found. There is also a Compass Points specific list online. You can even ship directly to us!

www.rainbowtrail.org/donate/needs-and-wish-list

Administrative Office

107 S. 9th Street, Suite B
Canon City, CO 81212
Phone: 719-276-5233
Fax: 719-276-5235
Office Hours: 9 am - 5 pm



Camp Office

P.O. Box T
3056 County Road 198
Hillside, CO 81232
Phone: 719-942-4220
Fax: 719-942-4000

Full-Time Staff

- Dave Jarvis, Executive Director.....dave@rainbowtrail.org
- Tammi Schneider, Executive Secretary.....info@rainbowtrail.org
- Aurice Worley, Bookkeeper.....accounting@rainbowtrail.org
- Maggie Brakke, Director of Compass Points & Day Camp...maggie@rainbowtrail.org
- Daniel Kirschbaum, Director of Retreats.....daniel@rainbowtrail.org
- Cam Regennitter, Director of On-Site & Bridging Borders.....cam@rainbowtrail.org
- Kyle Larson, Director of Site & Facilities.....kyle@rainbowtrail.org
- Chris Seaman, Food Service Manager.....chris@rainbowtrail.org

Board of Directors

- President.....Michelle Okes, Bethany Lutheran, Denver, CO
- Vice President.....Rev. Jane Jebesen, Faith Lutheran, Golden, CO
- Secretary.....Rev. Nicolé Ferry, Bethlehem Lutheran, Los Alamos, NM
- Treasurer.....Bill Ernstrom, Faith Lutheran, Golden, CO
-Rev. Russ Britton, Bethany Lutheran, Denver, CO
-Rev. Vera Guebert-Steward, Evergreen Lutheran, Evergreen CO
-Rev. Kathy Armstrong, Cross of Christ Lutheran, Broomfield, CO
-Sandy Elvington, Cross of Christ, Broomfield, CO
-Chris Lieber, Ascension, Colorado Springs, CO

www.rainbowtrail.org