



# Rainbow Reflections

BULK RATE  
U.S. POSTAGE  
PAID  
CANON CITY, CO  
PERMIT #30

Lutheran Outdoor Ministries of the Rockies  
**Rainbow Trail Lutheran Camp**  
107 South Ninth Street, Suite B  
Canon City, Colorado 81212

Volume 31, Number 3 Fall 2019

Rainbow Trail is operated and maintained under authority of a USDA Forest Service Special Use Permit. Rainbow Trail is located in the San Isabel National Forest, USDA.

## Rainbow Trail Loses a Giant In Our RTLC Family

### Dave Kirberg Leaves a Legacy in our Ministry

By Dave Jarvis

It was 1990. It was my second year at Rainbow Trail. I had met a staff trainer who specialized in play and team building the year before at an American Camp Association and she had come to work with our staff. She did a great job and we set a date for her to lead our training for the next year. In February of 1990, I called her to confirm our training dates and she realized she had double booked with two camps for the same dates.... and we were on the outside. I asked her if she knew anyone else that might be able to cover for that summer. She gave me the name and number of a guy named Dave Kirberg. And the rest is history!

Since 1990, Dave was a partner with me in ministry here at RTLC. Every summer, Dave and his "Kirberg magic" transformed new staff summer ministry teams into a family by the end of our first full day



of training together. Dave set the stage for all of the rest of our training. He is part of the reason we have had such consistently outstanding summer staff teams. The activities we did with kids were not called initiatives or games; they were called "Kirberg games." Things that Dave taught are ingrained in who we are. "Giving it up," a thing we do to acknowledge someone who

has done something great, is now part of our culture, and was given to us by Kirberg years ago.

Dave was not Lutheran in the early years but loved what was happening at RTLC. He kept bringing his son Lee with him when he did our training. Lee soon became a camper and came to camp for many summers. Dave met Pastor Vera

#### Inside this issue...

- \*Meet Our New Program Assistants
- \* Schedule and Fees for Summer 2020
- \* Your Registration Account Needs Your Attention!
- \* Colorado Gives Day is Coming
- \*Senior High Retreat

Guebirt-Steward while at camp and soon joined Evergreen Lutheran. Lee eventually worked on our summer staff for several summers as well.

Everyone won out of this relationship. As Dave continued to work with our staffs each May, he started coming a few days earlier to be a part of every Memorial Day work weekend. The only Memorial Day work weekend that he missed was when his son got married.

Dave passed away on July 16,

**KIRBERG, PAGE 2**

## Bristlecone Lodge Major Remodel

### Help Us Make It Happen this Winter!



Under the leadership of Kyle Larson, our Director of Site and Facilities, tremendous updates and changes have occurred over the last six years. Every cabin, including the woodcarving cabin, has been completely remodeled and are now heated and have recessed lighting. With the help of a skilled electrician and his team, we are moving quickly to LED lighting throughout camp, and we now have full power for lighting and heat for every cabin across the creek. We also just put a completely new deck on Columbine Lodge, our main administrative building, built a wonderful new treehouse, and have replaced almost every window in Columbine. The site is in incredible shape right now and is truly gorgeous.

As you know, we are working toward owning our site through the land exchange. That process in actually moving forward with the current U.S. Forest Service feasibility analysis scheduled to be completed by the end of 2020. If all goes right, we could

own our site by 2023. Our strategy has been to have our site in the absolute best shape it can be so that when we do own our site, we are moving forward with the new vision and new master plan rather than trying to bring the site up to a fully functional level before we

move forward.

We are celebrating the 40th anniversary of the construction of Bristlecone Lodge this year. This is our main retreat facility and is where our summer support staff lives during the summer time. Over the last 10 years, over 10,000 guests have used Bristlecone for their retreats. This doesn't even include the 50 summer staff that lived there every summer during those 40 years. Bristlecone, or BC as we know it, has served us very well over all of those years. But it is showing its age.

Our Board of Directors has been talking about remodeling BC for several years, but there is only a small window each year in which we can

**BRISTLECONE, PAGE 2**

#### Rainbow Trail Mission Statement

Rainbow Trail Lutheran Camp creates holy spaces that embody God's radical grace to affirm, empower, and transform all people to be Christ's light

## Trail Boss

By Dave Jarvis - Executive Director

Every year I don't think that time can go any faster. And every year, I am surprised how much needs to happen and it seems there are less days to do it. September was a blur. Our retreating ministries filled 26 of the 30 days of September, the 2020 brochure and postcard are at the printer, Grace Race is happening soon, ambassadors meet later this month, and registration for 2020 opens in less than a month. This is all really fun and very exciting, but I'm ready for the pace to slow down just a bit!!

We had yet another amazing summer with huge numbers of campers. Our summer staff was outstanding. There were many of new faces but they quickly became RTALC staff. This ministry team loved kids whole-heartedly and were faithful witnesses for Christ. I loved this group. I loved their energy, their persistence and resilience, and their sense of adventure, and their joyful spirit. This group really understood why they were here.

One of the beauties of this ministry is all of the people that are involved in making our summer ministry happen. Each person is able to share their gifts for the good of the whole. We had an awesome Bible Study that helped us all understand the "I AM" that Jesus is, the people "WE ARE" changes as we serve in the world. This was a challenging study. The writers did an amazing job of creating a study that I believe touched not only our campers but also our staff. Thank you to the writing team-- Pastor Vera Guebert-Steward, Pastor Nicole Ferry, Pastor Dave Risendal, Pastor Jane Jebson, and Pastor Michael Tassler-- and for all of the extra time you commit to our ministry to make our program better. You have been a blessing to this ministry and to me! Others who made a huge difference in our ministry this summer through staff training are Julie Miller, Dave Kirberg, Leslie Welton, Asher O'Callaghan, and Peter Severson. And, of course, thanks so much to our Memorial Day workers (all 135 of them!), and our fabulous nurses each week. Thank you all for giving so fully to this ministry!

I also want to thank all of our partner congregations for their support of Rainbow Trail. These congregations have become the financial foundation upon which we are able to build this ministry. There have been several congregations that have joined this group in 2019. They have given, and given very generously this year. Because of their support, along with our many donors, RTALC continues to grow and serve in new ways. We were also able to give over \$7,500 in camperships this year so money was never a reason a child didn't come to camp. There are now over 75 partner congregations that contribute to this ministry. Thank you for seeing us as partners in your ministry and in the faith development of your youth and families. If your congregation is not a partner congregation with RTALC, invite them to be one!

I also want to thank our partners in the Rocky Mountain Synod office for supporting Rainbow Trail in so many ways. Pastor Leslie Welton joined us for our end-of-staff training banquet and worship service in which Leslie commissioned our summer staff for their ministry. Leslie, along with Peter Severson and Asher O'Callaghan, led our Lutheran theology session during staff training. Leslie also serves as the Synod liaison on the RTALC Board. Bishop Jim Gonia joined us to close out our summer with our staff at our closing banquet and to lead Eucharist at worship. Thank you all for knowing the power of outdoor ministry and seeing it as a vital part of the ministries of this Synod.

Finally, I want to thank our full-time staff for their incredible dedication and love for the ministries of Rainbow Trail. This year, more than ever, you exemplified professionalism, integrity, compassion, and grace in all you dealt with this summer. There is nothing better than doing ministry with those that you love. Love you guys!

Registration for 2020 will open on November 1st. Members of the churches of the Rocky Mountain Synod, ELCA have registration priority until January 1st, 2020. After that date it is open registration. Take advantage of this next two months of priority registration. This will ensure that your camper gets into the week of camp that they want to attend. If you wait until even late January, many camps will be full and your choices will be limited. We are moving to a web-based version of our registration software. This should be a great improvement for you. You will need to go claim your account and set up a new password in the system before you can register for 2020. Read the article about this in this newsletter. You can do that before November 1st!

The land exchange process is moving! We signed the agreement to begin the US Forest Service feasibility analysis in late June, we paid the funds needed to complete the entire feasibility analysis, and we have already had two important meetings. We are meeting with the Forest Service on October 16th at our Locke Park property to gather more information before the snow flies. The feasibility analysis will run through the fall of 2020. At that point, we should receive an affirmative result to the feasibility analysis and we will sign the Agreement to Initiate the actual land exchange. Keep this process in your prayers. We will keep you informed as things progress. We do need to raise more funds to complete this process. For more details, read the land article in this newsletter.

I lost a very dear friend this summer in Dave Kirberg. Dave has been a part of 30 of my 31 years here. At the beginning of each staff training, Dave helped move our summer ministry team from a bunch of strangers to a family in about 5 hours. It was his Kirberg magic. Dave loved RTALC. We loved him! There is an enormous hole that will be so very difficult to fill. I publicly want to thank Dave for his dedication and belief in this ministry, and for his investment in people through this place. Kirberg, we love you and we are missing you!

It has been such a blessing to serve you through this amazing place. We are so hopeful and excited about the possibilities as we look toward 2020: a positive outcome of the land feasibility study, amazing year-round ministry, and God surprising us in some very cool ways! Come join us for the journey!!

*Dave*



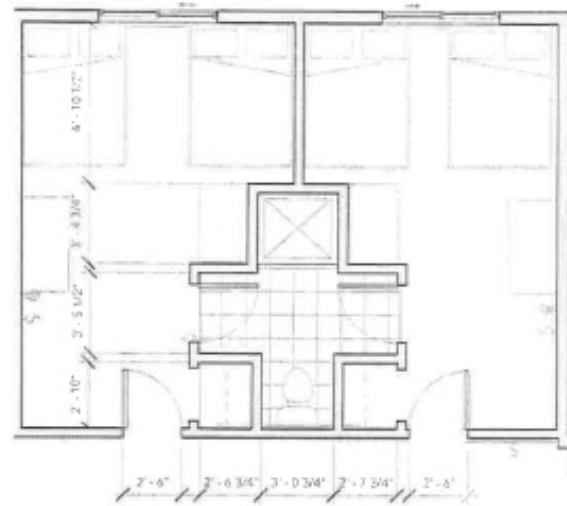
### KIRBERG, CONTINUED

2019. The week before, he served as a Camp Grandpa for Senior High #1. Dave was in his element – loving kids and being fully involved in one of his favorite places on earth.

Dave Kirberg is woven into the very fabric of this ministry and over the years, he served as a summer staff trainer, a camp grandpa, a camp ambassador from his church Evergreen Lutheran, a volunteer, and as a Bible Study writing team resource. But more than that, Dave was a great friend to our staff, to our campers, to

### BRISTLECONE, CONT'D

close Bristlecone down for construction and not have a major impact on revenue or use. That window is typically November through the end of February. At our most recent September Rainbow Trail Board meeting, the Board felt the remodel of Bristlecone needed to be moved to the top of the priority list and needed to happen in the upcoming window starting in November. We have architectural drawings now, and know the total cost of the project will be about \$300,000. The good news is that we have about \$140,000 already in our designated funds for this project. However, there is some urgency in our fundraising to raise the remaining \$160,000 since we want to raise these funds in the next 90 days so that we can start construction in that November time window. The Board has had a policy of not building until we had all the funds for the project in the bank. This approach has served us well as Rainbow Trail is currently 100% debt free.



TYP. LOWER BEDROOM & BATHROOM REMODEL

## 13th Annual Grace Race a Huge Success

The 13th Annual Grace Race was blessed with a cool but picture perfect day and an enthusiastic crowd. Those participating helped make a difference that day by raising funds for the ELCA World Hunger Appeal. 163 participants and volunteers came out for the race. There was also a great post-race party with burgers and fabulous music. People stuck around and picnicked following the race. All the top times for all the age groups will be posted on our website. The final totals are not in but it looks like we will be able to send a check for about \$9,000 to the ELCA World Hunger Appeal.

We wanted to extend a special thank you to the individuals who helped to organize this year's Grace Race. The time and effort that Brad Wiidakis, Dave and Claire Fisk, Erin Pierce, Colin Twaddell, Terry Ritter, Peter Severson, Kathy Armstrong,

Rainbow Trail, and especially to me. I loved Dave Kirberg. I so appreciated his gifts and his style. There is a huge void at RTALC now that we will have to figure out how to fill. If you would like to give a gift in memory of Dave, please mark your gift "Kirberg Memorial."

I miss you Dave. We are going to celebrate your life for many years to come. Thanks for being a game changer in my life and the lives of so many!!!

We think we have a great opportunity for you to be an integral part of our ministry in a new way! The financial support from the Rainbow Trail community over the years has been second to none. We know this is an aggressive fund-raising schedule to have the funds available by December 1st to build in that November to March window. It's \$160,000. We have already raised \$25,000 with \$15,000 of that as a challenge gift to inspire others to give. Please don't let your gift to this project affect your annual giving to us. We still need your support to keep operations going. But if you can do an additional gift to help make this project happen, you will help transform how we do ministry in all seasons of the year. We can also receive stock gifts as well. Please be sure to mark your gift for the Bristlecone remodel project. If you have any questions, contact Kyle (kyle@rainbowtrail.org) or Dave (dave@rainbowtrail.org).



Kyle Larson, Daniel Kirschbaum, Mike and Cam Regennitter, and Dave and Nellie Jarvis put into this race was a true gift. It is always a special time when the camp community comes together!

The 14th annual Grace Race is scheduled for the afternoon of Saturday, October 3, 2020 in Sloan's Lake Park starting at 4:00 pm. Put it on your calendars now! We look forward to seeing you there next year!

## Your Rainbow Trail Registration Account Needs Your Attention!



Rainbow Trail has switched to a new online version of our registration system! Starting on October 16th, you can visit our registration portal for early access to claim your account, and review/update your family information. The process is easy. You will be asked to reset your password and claim your account.

Once you have done that, you will go into the new system to update your mailing address, phone numbers, etc. Once you are done with all of that, you

are ready to go.

On November 1st, you can log back into registration site to start your registration for our 2020 summer camps! You will receive an email around October 16th to guide you in this process.

Remember, you can verify your account BEFORE November 1st so you are ready to sign up for your camp when registration opens.

If you have any questions, please contact us at the Canon City office at 719-276-5233.

## Matching Gifts Challenge: Dining Room Chairs

Early 2019 we received a generous donation of \$4,000 to begin the process of replacing the chairs in the dining hall, with the hope to have \$2,000 of that matched by other donors. In total, the new chairs will cost about \$6,400 but will be a huge upgrade both aesthetically and functionally. If you'd like to give to the match challenge, email [dave@rainbowtrail.org](mailto:dave@rainbowtrail.org) or call 719-276-5233.

## Cam(p) Vibes

By Cam Regennitter - Director of On-Site & Bridging Borders

Growing up, I have always enjoyed this time of year. From the landscapes changing into the Autumn colors to it becoming the sweater weather we all know and love, I enjoy the elements of the Fall season.

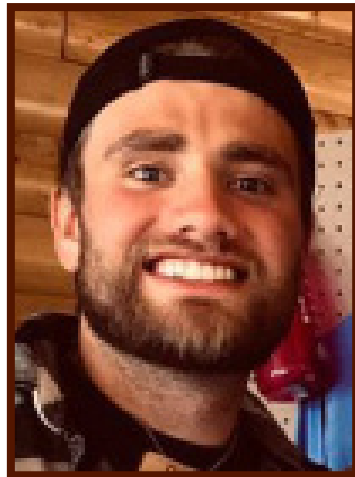
Summer 2019 was full of so much great ministry, and I am grateful for what it was for my first summer in this role. Bridging Borders trips to Mexico, Puerto Rico, and Appalachia were all successful in their own ways. After our first summer going to Appalachia, I feel very confident and excited about this partnership to grow in the future. We already have three trips signed up to go there next summer. I was blessed with an excellent team of Travel Directors to go out and lead all of the Bridging Border trips. I had confidence in their gifts to provide great ministry to not only the congregations, but the people they walked with and served. That's precisely what they did, and then some.

On-Site achieved of providing another great summer of ministry. Every week consisted of intentional worship, telling and creating stories, waves of laughter, and growth in relationships with Jesus. I couldn't have asked for a better staff to take their gifts and bring them to camp where they served campers and each other beyond expectations. They we're all game-changers. The lessons and experience I have received from this summer have done nothing except help me grow as a person and as a leader. I will say learning guitar has been the most fun and gratifying. My family has never really been musically talented, so this has been something entirely new for me. I continue to practice every day, so next summer, I am ready to lead.

Since summer has ended, the pace has changed. From doing high-ropes with retreat groups to working in the office in Cañon City, I have enjoyed being able to do things outside of the camp world. I have cherished the family time that has taken place this fall. In September, I had the honor of officiating my little cousin's wedding here in Colorado. What a special day it was. I now am in full go of being a part of my little brother's senior year as much as possible. He is in his final football season, and I make every game, which is a real priority. Next month, in November, we are getting ready for my little sister's wedding. It's been fun watching her grow up, and it doesn't seem real that it is happening. It will be another special day, and I can't wait to see what God has in store for her and her best friend.

I want to thank everyone who has supported me in this role. Believe me when I say that I do not take it for granted. I am happy to be here and to continue to help provide the great ministry Rainbow Trail has to offer!

Thank you and many blessings to you and your loved ones. God is good all of the time and all of the time, God is good!



Cam

## Simply Sam

By Sam Berglund - Director of Compass Points & Day Camp

This fall has been a whirlwind up here at camp, Retreat Season is in full swing and it's been so much fun seeing all the different groups, churches, families and even a wedding party come and go! I absolutely love the fall up here, the leaves change all at once all across the range in such a dramatic way, it does truly amazing things for the soul and we're so lucky to have the site that we do.

This past summer was the busiest one I've ever had. Our Compass Points program was exceptionally busy with groups from all across the midwest and the east coast coming to spend a week with us in the Sangre de Cristo wilderness. The first half of the summer took a little more creative thinking than usual, with the amount of snow the range received this past winter. Our usual campsites were still buried underneath 10 feet of snow from the beginning of summer and in some places clear up into week 6! With so much snow sticking around for so long, our week long guiding training trip was spent scrambling up snow mounds and teaching the guides how to find trails in these extreme conditions, as well as coming up with clear backup campsites a lot lower in elevation than we usually camp. All in all it was a fantastic summer for the backpacking program, and although it was a little more creative than usual all of the kids and adults onsite had an incredible experience and an adventure not soon forgotten.

We currently have many trips booked for the 2020 season and still have some openings if anyone is interested in getting a group together for a week on trail! We also have some fantastic open registration trips this year that open up on November 1st. These trips are designed for kids or adults that want to experience a week on trail but don't have a group big enough to go!

Come join us for a week in the mountains!

The Day Camp program this year was as full as ever, sending groups all across the Rocky Mountain Synod and beyond to provide the camp experience to a vast array of church communities. The Day Camp program provides a unique opportunity for churches to connect within their congregations and local communities with the energy and programming that come with camp staff. We are continually blessed with how many different church communities we get to be a part of every single year, and staff always return to us rested, well-fed and full of kid quotes and stories from the week. Although it seems that last summer just ended, our 2020 Day Camp schedule is nearly full already and we look forward to working with a vast array of churches again this coming summer.

As for me, this past summer was the last I'll be serving as Director of Compass Points and Day Camp Ministries here at Rainbow Trail. In December I'll end my time here and move on to run my online store The Grizzled Moon and work as an artist full time in Salida, a dream I've been pulled towards for a really long time. To say this place has not changed me foundationally as a person is the understatement of the century and I cannot put into words how much I've loved every moment of my time here and every interaction I've been blessed to have with each and every one of you. Rainbow Trail Lutheran Camp is a rare commodity and a safe place for everyone that will forever be a part of me as I move away from this place. From the bottom of my heart thank you for your kindness, your love and your support of such an incredible organization.

God's Peace (and make Dave paint his face as a hippo as much as possible),

## COLORADO GIVES DAY IS COMING!



## December 10, 2019

On Tuesday, DECEMBER 10, 2019, Coloradans will come together again to raise millions of dollars for non-profit organizations like ours.

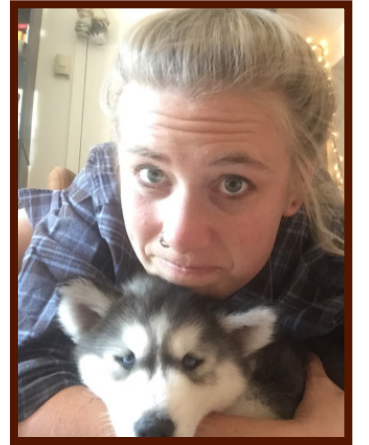
Last year \$35.1 million was distributed to 2,481 different non-profits throughout Colorado! RTLCL raised \$88,349 in that 24-hour period. Our goal this year is to raise \$90,000. All funds raised will go toward the Annual Fund.

You may wonder why we do Colorado Gives Day every year. The answer is that every donation given to RTLCL on Colorado Gives Day gives Rainbow Trail a chance at additional funds made available by Community First Foundation and 1st Bank. Every donor that gives to Rainbow Trail, no matter the size of the gift, puts Rainbow Trail in the drawing for monetary prizes. So, a \$10 donation could earn RTLCL \$1,000 or more!

Additionally, at the end of Colorado Gives Day, \$1,000,000 will be divided amongst the participating non-profit organizations. Each organization involved will receive a portion of the \$1,000,000 based on their total donations that day.

Since we are still in the middle of the land exchange process, some people have shifted their annual fund donation toward the Land Exchange Capital Appeal. But we still need our annual fund to sustain day-to-day operations. You don't need to live in Colorado to give on this day! Anyone can give from anywhere! No matter where you live, mark your calendars for Colorado Gives!

Be sure to go to [rainbowtrail.org/co-gives](http://rainbowtrail.org/co-gives) to donate! If you're worried about forgetting, fear not! You can pre-schedule your donation for Colorado Gives Day and make your donation go farther!



# Upcoming Events

## RTLCL Senior High Retreat

November 22 - 24, 2019



Join us at Rainbow Trail Lutheran Camp on November 22 - 24, 2019 for a weekend in the wilderness filled with fun camp activities, a thought provoking study, enthusiastic RTLCL staff, delicious home-made meals, and serenity that only the mountains can offer. Along with the Rainbow Trail staff, this weekend will be led by Deacon Erin Power who is the Assistant to the Bishop for Synodical Life in the Rocky Mountain Synod.

The theme, "Fully Known," explores how when we understand ourselves, we are able to understand others as well. Join in a weekend of exploring who you are in the safety

of a community that trusts we are all created and beloved as God's children—no exceptions. We will explore the personality tools of the Enneagram and Meyer's Brigg's Type Indicator (MBTI). These will be used to deepen our self-awareness and how we can grow deeper in our relationships with God and one another.

Senior high youth will have the opportunity to dance, hike, craft, play, and laugh with each other as they learn and enjoy God's creation. Do not miss out on this opportunity to dive into meaningful time together. Sign up soon!

The retreat fees are \$135 per youth and \$100 per adult with a non-refundable \$35 per youth deposit. This all-inclusive fee covers, food, lodging, all activities, staff leadership and an awesome t-shirt to take with you. You can find all the registration details and other information online at [rainbowtrail.org/senior-high-gathering](http://rainbowtrail.org/senior-high-gathering). Register now to be a part of this unforgettable, spirit-filled weekend!

## Adventfest

December 6 - 8, 2019

Don't get caught up in the hectic holiday hustle and bustle. Come get away and retreat to RTLCL, and celebrate the real reason for the season: Jesus. Adventfest is a great way for families to prepare for the arrival of our Lord. The worship services will focus on the four Sundays of Advent.

There will also be time for kids and adults to create great Christmas gifts. Adult crafts for this year include stained glass, woodcarving, dipped candle making, wooden lamps, pinecone Christmas wreaths, pottery glazing, aspen log candle holders, loom woven potholders, and woven baskets. Adults and kids ages 13 and older are able to participate in two crafts during the weekend. Each craft costs \$12.00 for instruction and materials. Kids' Korner includes a variety of things including sledding (weather permitting), crafts, cookie baking, and games! Kids' Korner is for kids ages 4-12. Babysitting will also be available during the weekend. The cost of both Kids' Korner and babysitting is \$15.00 per person for the weekend. In addition, you can cut your Christmas tree off of RTLCL's site for only a \$10 Forest Service permit fee. This has all

the makings of a great family tradition!

Adventfest starts on Friday evening and runs through lunch on Sunday. This is a great weekend to relax and truly enjoy the season with your family. The cost of this weekend of fellowship and renewal is \$80 for adults and \$40 for kids ages 4-12. Kids 3 and under are free (crafts are additional).

Registrations are due no later than November 23rd. Space is limited. You can register online!

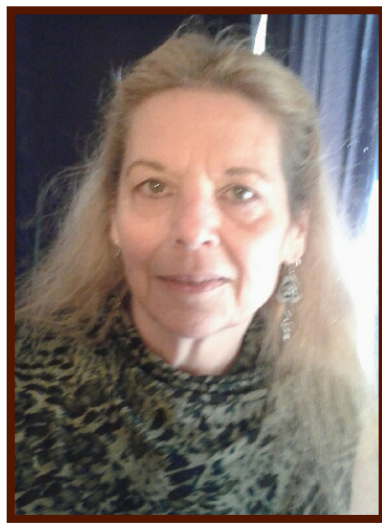


## Chris' Corner

By Chris Seaman - Food Service Manager

Hello to my RTLCL family! We had a very eventful summer! I would like to say how profoundly I am missing Dave Kirberg. Camp has lost a valuable asset and a wonderful friend. Love you Dave! Other than that it was a normal, kind of, summer! As always I was able to find my joy in my job, staff and all the wonderful friends I get to see. Retreat season has been unbelievably busy. Good job Daniel! Once again this year I have another surgery to face. This time I have to get my shoulder replaced. It wouldn't be so bad except for it's my left shoulder and I'm left-handed! Oh well, I managed to get through the summer with the one arm. I am praying I can get it done after Advent Fest. I don't want to miss seeing your smiling faces! I'm getting my roof replaced and let me tell you, that's a project! I was helping my neighbor clean out one of his sheds and we found a full recipe box that he was going to throw away. Sacrilege! When going through the box I found a page from a magazine dated 1942. This had wartime recipes that use very little sugar due to everything being rationed. I thought this would be a fun way to share a little bit of culinary history! The first recipe is for Vitamin Cookies. You will need, 1/2c. Shortening, 1/4c. Sugar, 1 cup of corn syrup or 1/2c. Honey and 1 Tbl. Milk, 1 Egg beaten, 1tsp. Vanilla, 1/2c. of raisins or chopped dates, 1/2c. Chopped nut meats, 1 1/2 c. Sifted flour, 1/2c. Sifted whole wheat flour, 2tsp. Baking Powder, 1/4tsp. salt.

Cream shortening, sugar, and syrup or honey and milk. Add egg, vanilla, fruit, nuts and sifted dry ingredients. Mix well. Drop by teaspoons on greased cookie sheets and bake at 400 degrees about 15 minutes. Makes 4 dozen. The next recipe is for Molasses Cookies. You will need, 1c. Molasses, 1/2c. Melted shortening, 1 egg beaten, 3 1/2c. Sifted flour, 1 tsp. Baking powder, 1/2 tsp. Baking soda, 1 Tbl. ground coriander or Allspice, 1/4tsp. Salt. Mix molasses, shortening and egg. Add sifted dry ingredients. Chill dough for 1 hour. Roll 1/4 inch thick. Cut in various shapes and decorate with colored sugar or nutmeats. Bake on ungreased cookie sheets at 350 degrees for 15 to 20 minutes. Makes 4 dozen. If crunched for time you can put the dough in the freezer to chill. The dough will be ready in 1/2 the time! I hope you all give these a try and we can compare notes! If you ever have a question about a recipe you may email me at [chris@rainbowtrail.org](mailto:chris@rainbowtrail.org). I'm happy to answer any questions or just chat! I would like to finish up by wishing Sam Berglund much love, joy, and happiness in the next chapter of your life. I have truly enjoyed our time together and the friendship that ensued. I'm going to miss you and Tuka so very much! In closing, always remember, God Is Great! Till next time....



Chris

## Land Exchange Process Is Moving!

The land exchange process is really moving! Before we dive in too deeply, we want to make sure everyone understands what a land exchange is all about, and where we are in that process.

Rainbow Trail currently sits on leased National Forest land and we are working to own our site. The Forest Service does not have the authority to conduct an outright sale of National Forest lands. A land exchange is the only method for acquiring federal lands such as the site upon which Rainbow Trail currently resides.

To complete a land exchange, Rainbow Trail needed to secure private lands on the San Isabel National Forest with high public values that the Forest Service is interested in acquiring. In 2014, Rainbow Trail purchased non-federal land in the Locke Park area of the Wet Mountains. With the securing of this property, a formal land exchange proposal was submitted to the Forest Service in April of 2018, beginning the 64-step land exchange process. The process culminates in the Forest Service issuing a patent to Rainbow Trail and Rainbow Trail deeding the private lands it secured to the federal government.

In late June of 2019, Rainbow Trail signed the agreement to begin the US Forest Service feasibility analysis. We transferred funds to cover the expenses of the feasibility analysis in mid-July, and work began in earnest this past August. We have already met with the Forest Service team twice and will be traveling to our Locke park property on October 16th to gather any information they need from that property before the snow arrives.

The work on the feasibility analysis will run through a good portion of 2020. If we receive an affirmative response, the next step in the process would be signing the Agreement to Initiate the actual exchange with the Forest Service. Then the remaining 60 steps of the 64 steps in the land exchange process, which includes legal notices, request for public comments, field studies, appraisals, and environmental reports, will get underway.

Rainbow Trail will need to provide additional funds to the Forest Service after the Agreement to Initiate the Exchange is signed to cover the Forest Service's cost to process the land exchange. In order to have the needed funds to begin the exchange by September of 2020, we are going to start raising the remaining balance we need to complete the entire land exchange process. We estimate we still need to raise is around \$200,000. This will cover the Forest Service's staff, costs to process the exchange, consultant fees, biological and archaeological studies and reports, and appraisal reports. We continue to ask for your prayers and your financial support for this process. If you gave to the land purchase before, we hope that you will consider giving an additional gift for the future of RTLCL. Your contributions at this stage will help us see this process to fruition. If you haven't given yet, consider making a special gift for the future generations that will be a part of this ministry. I would love to have a more in-depth conversation with you and explain more about this once-in-a-lifetime opportunity. You can reach me by email at [dave@rainbowtrail.org](mailto:dave@rainbowtrail.org) or by phone at 719-429-1377. Help us make Rainbow Trail Lutheran Camp our Home At Last!

## The Lion's Den

By Daniel Kirschaum - Director of Retreats



Wow! I'm writing to you at the end of a very busy September for Rainbow Trail. We saw guests on our site 26 of the 30 days in this month, and each one was full of incredible ministry and so much joy. The fall is truly a wonderful time to be in the mountains with cool air and changing leaves.

My first retreat season in this role has been an impactful journey with our two fantastic Program Assistants. We've hosted 11 groups amounting to over 500 people since the summer ended. Between schools, congregations, a soccer team, fly fishers, Labor Day family campers, the Rainbow Trail

board and a wedding, each group brings its own unique feel and keeps the site feeling full and vibrant.

This past summer was my first summer spent at Rainbow Trail. It was so fun to see how our summer ministry happens and to be serving alongside such fantastic staff, volunteers, and adult leaders. Rainbow Trail's summer program is totally different than the others I've been apart of. I love the way we create so many opportunities for everyone who walks onto the site to explore their gifts and to be in leadership roles.

Amongst a full summer and a busy retreat season, I have also been doing my own wedding planning. During the first week of October, Jonny and I will head back to WI for a week to get married and spend a short time with friends and family. We're excited to see people back home and share the day with several members of our Colorado family as well.

We're looking forward to our honeymoon to St. Thomas in December. In the first year of this full-time role, I've been met with nothing but a warm welcome, fond memories, and a shared love of the mountain. Rainbow Trail feels like home, and I'm looking forward to meeting even more of this community. On a more short-term note, the rest of the fall promises to be full of life-giving ministry with our Women's Retreat, Confirmation Retreat, Senior High Retreat, and Adventfest in addition to our regular fall retreaters.

I hope the changing of the seasons brings cozy weather, time spent with loved ones, and God's abundant blessings.

## HELP RTLC WITH YOUR THRIVENT CHOICE DOLLARS

If you are a Thrivent Financial member, we need your help! We set a Thrivent Choice goal for 2019 of \$35,000 and we still think that goal is very attainable. With that kind of increase, not only can we continue to provide camperships but we can also possibly upgrade some of the equipment on our site.

Here is how you can help. You will need to go out to Thrivent's website each quarter to direct your Thrivent Choice dollars. This is the only way to ensure that

your Thrivent Choice dollars will make it to Rainbow Trail each quarter. Go to <http://www.rainbowtrail.org/donate/thrivent-choice/> and follow the steps to make your designation.

If you have friends that are Thrivent members and who have not designated their Thrivent Choice dollars, please encourage them to designate those Thrivent Choice dollars to Rainbow Trail. We heard that there was still close to \$1 million dollars in Choice dollars NOT distributed last year. Help us change that! You can make a world of difference!!

### GIFTS IN HONOR OF

**In Honor of Christy Shelinbarger**  
**Klemz' ordination**

King of Kings Lutheran Church- Pueblo

**In Honor of Alex Herbig**  
Melinda Godfrey

**In Honor of Tom Guinn's 92 Birthday**  
Kim & David Guinn

### GIFTS IN KIND

Les Anderson - 10-16GB Flash Drives and 8-2GB Flash Drives, 40 stamps, Box of 9x12 env., 2 binders, assortment of paint brushes  
Dave & Carol Hartenberger - 1991 Big Tex 14' Utility Trailer  
Peg & Dave Slagle - 1 Container, gift bags, various office supplies and jumper cables  
Aurice & Bob Worley - 15 pairs of work gloves  
Randy & Lisa Schrader - 2016 GMC Acadia  
Tom Stephens & Mary Beth Frederick - Camp stove for Compass Points  
Bob & Joyce Witte - 2 Wouxun KG-833 UHF radios, 2 Wouxun RC-50 6 position chargers  
Art Kraus & Michelle Stone Kraus - paper clips, File labels, 4 rolls of masking tape, 1 roll of duct tape, 4 rolls of scotch tape, 12 yellow writing tablets

Bob & Margie Dugan - 2 shop vacs, 8 rolls of packing tape, 6 pairs of work gloves, 6 sets of towels, and hiking boots  
1 shop vac, 1 case of paper, 8 rolls of packing tape, 24 rolls of tape, 2 tape dispensers, and 12 lighters

Cheryl & Stephen Mahon - 2 boxes of 36ct sharpie markers, 2 boxes of laminating pouches, and 30 pillows  
Robert & Denise Tristano - 12 Utility Lighters, 2 32oz Water Bottles, Markers, pencils, crayons and other office supplies.

Kirby Olson - new equipment for the network  
Charlie & Claire Pineda - new equipment for the network  
Mike & Deana Kolk - 13 rolls of scotch tape, 12 legal pads  
Kris & Tim Car - 2003 Honda Pilot AWD  
Dave & Carissa Cruson - 34 Legal Pads

### ORGANIZATIONAL GIFTS

Anonymous  
Benevity Community Impact Fund  
DST Systems, Inc.  
Minneapolis Foundation  
Oppenheimer Funds  
Thrivent Financial  
Verizon Foundation

# Rainbow Trail Welcomes Maggie & Tyler!

This September, Rainbow Trail welcomed two new Program Assistants for the 2019 -2020 retreat season. We can't wait for you to meet them! They bring great passion to this ministry, valuable experience, and will be an asset to all we serve this retreat season. Come visit us this retreat season and get a chance to know these two!



Maggie



Tyler

Maggie grew up in Minnesota on the shore of Lake Superior. After working as summer staff at a camp up north for three summers, Maggie taught 6th grade math in Brooklyn Park, MN for two years. She is excited to spend a season in the mountains, exploring her future in outdoor ministry. In her spare time Maggie can be found dancing, hiking, and playing cribbage.

*The Program Assistant position is designed to give interested individuals a chance to experience full-time outdoor ministry. Program Assistants serve from September through May and help in all aspects of Rainbow Trail's ministry. If you would like more information, please contact the*

Tyler Birkhoff grew up in McHenry, Illinois and has always found joy in the work and play of ministry. Before Rainbow Trail, Tyler was living in Omaha, Nebraska as a participant in Lutheran Volunteer Corps. There he worked as an outreach coordinator at Grace Lutheran Church assisting and operating a variety of programs and ministries. Tyler has been involved in camp life mainly at Lutherdale in Elkhorn, Wisconsin, as well getting involved at a small hand full of other camps in the Midwest area. In his spare time, he enjoys adventures, music, coffee, and making dated references without realizing how odd they are.

## Thank You, Carrs!

Over the past few years, Rainbow Trail has received many generous donations to our vehicle fleet. These vehicles travel thousands of miles every summer, safely transporting our Day Camp teams across state lines and home to RTLC. We want to extend a deep and



sincere thank you to Kris and Tim Carr for the most recent donation to our fleet. The Honda Pilot will serve as a great Day Camp vehicle this summer. It is because of generous donations like these that our vehicle fleet is the best it's ever been. Our Day Camp ministry would not be possible without these vehicle donations. Thank you, again!

# Sight to Site

By Kyle Larson - Director of Site and Facilities

Summer has come and gone as fast as usual. Time at camp really gets blurred once we hit March each year. It seems like I blink and six months have passed.

Fall is and continues to be my favorite season of the year. Even though retreating has picked up in a big way, there's still plenty of time to enjoy the beauty of the changing seasons and the quiet that comes with a less busy schedule. Fall always provides great space to reconnect with retreat groups while they're here onsite. It's nice to have time to sit and talk with people or be on the ropes course with groups. Even though we're busy, the pace just seems to be a great change from the craziness of summer.



Summer 2019 was another great summer for lots of reasons. I was blessed to have an incredible team to help me move the site forward. The whole maintenance team stepped up in a big way this year and made the site shine. I was fortunate to have an incredible leadership team in Sands Simonton, Nick Hughes and Levis Pennock-House. These guys made my life so easy this summer. It certainly wouldn't have run as smoothly as it did without their work and dedication. The camphand crew was also great to work with. They all meshed well with each other from the beginning of the summer and were great at handling whatever challenges were thrown their way. I was blessed that Hales, Rob, E, Abby, Abigail, Mackenzie and Beka were willing and able to give up their summer to do the not so fun behind the scenes work. The summer wouldn't have been the same without your work ethic and love for RTLCL.

Leading into summer we always have our annual Memorial Day work weekend. I'm forever grateful for the work that is accomplished that weekend and for the insane amount of hours people put into our site to get it ready for summer. This year was nothing short of amazing. We took on a lot of projects but they all went great. This year we updated Gallardia (woodcarving), completely rebuilt the deck on Columbine, remodeled the bathroom in Eagle Peak, insulated the ceiling in Eagle Peak, installed new shelving in the Pavilion, replaced windows in the Columbine apartment, upgraded all lighting in the Pavilion to LED, installed permanent LED lighting around the cross in Aspen, rebuilt the horseshoe pits and replaced the basketball hoop down by the Pavilion! Thanks to Phil Dorth, Dave Fisk, Bob Dugan, Bob & Holly Denning, Jeff Spilker and Mike Di Lisa we made huge strides on our site once again this year. We were also blessed to have Earl Micek of Lumen Electric and five of his crew back out to do not only new lighting in the Pavilion but also various other LED and heating upgrades across the site. Thanks to all of our contractors and to all our volunteers for being willing to give of yourselves for those three days. What a gift you all are. See you next year!

January starts my eighth year at Rainbow Trail. As always, I just want to say thanks to everyone who has and continues to support me in my role. I wouldn't have been able to make it this far without the community that surrounds me.

If you're ever in the Hillside/Salida area, don't hesitate to call or stop by.

Till next time.

*Kyle*

## 2020 Memorial Day Work Weekend

Memorial Day has become as much a tradition at Rainbow Trail as anything else we do. We typically have over 125 people that come and join in this annual work weekend to get camp ready for summer. If the list of projects from last year is any indication (completely rebuilding the deck on Columbine Lodge; installing the new log siding, new lighting, new ceiling, and new heaters in the Woodcarving Cabin; installing LED lighting in the main room of Columbine, in Aspen Dining Hall, and in the pavilion; remodeling the bathroom in Eagle Peak Lodge; installing a new basketball hoop system; building the new shelving in the loft of the pavilion and in arts and crafts; installing the new lighting for the cross in Aspen dining hall; insulating the ceiling in Eagle Peak Lodge; building brand new horseshoe pits; installing new windows in the apartment in Columbine Lodge; and



much more), we'll be sure to have another busy and memorable weekend! The dates for 2020 are May 22-25, 2020. Call the Canon City office at (719) 276-5233 or email Dave at dave@rainbowtrail.org to reserve your spot at this fun and rewarding weekend. This weekend does fill up quickly and typically has a waiting list. Reserve your spot today!

### 'Tis the Season to Give!

If you have ever wanted to make a difference... and contribute to a greater cause, Rainbow Trail offers a unique way to do so. Our Campership Funds help give youth needing financial assistance the chance to experience a week at camp. What a great gift: sending a deserving kid to camp to experience God and a lively faith community in this beautiful setting! Send your gift to RTLCL marked "Camperships." You can also make your gift through the new donate button found on the banner photo of our Facebook page. Contact Dave at the Canon City office for more information. 719-276-5233 or dave@rainbowtrail.org

# Memorial Day Donor

Are you considering a yearly gift to Rainbow Trail but don't know where you'll see a tangible return? Look no further! Each Memorial Day weekend Rainbow Trail hosts roughly 120 volunteers to make major improvements to our site and prepare for summer. What some might not know is that Rainbow Trail spends around \$20,000 in materials for the weekend! With the help of experienced contractors and careful planning, we believe we receive between \$40,000 and \$50,000 worth of labor in just three days! Rainbow Trail is seeking donors that are passionate about site improvements and would be willing to fund part or all of our annual Memorial Day work weekend. If interested, email kyle@rainbowtrail.org or call (303) 902-5940.

## ANN SMITH LAND EXCHANGE FUND

Roger & Jane Barrack  
Faith Lutheran Church, Golden, CO  
Laura & Mike Growney  
Holy Cross Lutheran Church,  
Wheat Ridge, CO

Severt & Mary Kvamme  
Ms. Harriet Porch  
Prince of Peace Lutheran Church,  
Colorado Springs, CO  
Gene & Angie Youngmann

## CONTRIBUTORS

Thank you to the following friends of Rainbow Trail who gave a gift in 2019.

Anonymous	Barb & Jeff Layman	Robert & Michelle
Barrett Bartels	Rocky & Jen Lioce	Thomsen
Nathan Bergmann	Tim & Sandra Maxa	Rick & Holly Thorstad
Linda & Stephen Daniel	Ann & Merlin Nimrod	Tania Ventura & Jeff
Jack & Bonnie David	Jerry & Lorna Reeves	Hollender
Kenneth Eastman	Allegra Reiber	Helen Wagner
Laura & Mike Growney	Margaret Sisson	Leonard & Judy Walgren
Susan & Dan Gullede	Brooke & Scott Steenhard	Keith & Tammy Wetter
Sophia & Nick Hassman	Lloyd Stivers	Ken & Paula Wills
Colette Kerlin	Garrett & Stacey Struessel	Brenda Zimmer

## 2020 Summer Schedule

- The Rainbow Trail summer 2020 schedule has been set. The fee will be \$465 for all youth camps, with the exception of Intro Camp, which will be \$235. The week of August 9-15 has a special rate of \$445. Family camp fees are \$465 for adults (ages 19 and older), \$350 for teens (ages 13-18) and \$235 for ages 4-12. There is no charge for kids under age 4. **Be sure to register early!**
- May 22-25.....Memorial Day Work Weekend
- May 25-June 6.....Staff Training
- June 7-13.....Junior High #1
- June 14-17.....Intro To Camp #1
- June 14-20.....Junior #1
- June 17-20.....Intro To Camp #2
- June 21-27.....Confirmation #1
- June 28-July 4.....Family Camp #1
- July 5-11.....Senior High #1
- July 12-18.....Confirmation #2
- July 12-17.....RTLCL South
- July 19-25.....Senior High #2
- July 19-25.....Open Sr. High Compass Points
- July 26-August 1.....Open Jr. High Compass Point
- July 26-29.....Intro #3
- July 26-August 1.....Mixed Junior #2/Junior High #2
- August 2-8.....Family Camp #2
- August 9-15.....Beloved Community/Mixed Junior #3/Junior High #3
- September 4-7.....Labor Day Family Weekend

**To find out more about these camps, our summer brochure can already be found at our website, [www.rainbowtrail.org](http://www.rainbowtrail.org). You can also find a full set of our registration policies on our website.**

### Grade Levels as of Fall 2020

- Intro to Camp = entering 2nd - 3rd grade
- Juniors = entering 4th - 6th grade
- Junior High = entering 7th - 8th grade
- Senior High = entering 9th-12th grade

**Please note:** Lutherans of the Rocky Mountain Synod, ELCA have registration priority until January 1, 2020 This applies to all camps, including family camps.



# Events Calendar 2019 - 2020

November 22-24.....RTLCL Senior High Retreat  
 December 6-8.....AdventFest  
 February 28.....Summer Staff applications due  
 April 1.....Summer Volunteer apps due  
 May 22-25.....Memorial Day Work Weekend  
 May 25-June 6.....Staff Training  
 September 4-7.....Labor Day Family Weekend  
 September 24-27.....Men's Fly Fishing Retreat  
 October 3.....Grace Race

## PATHFINDERS

The following individuals are members of the 2019 Pathfinders' Club. Pathfinders is RTLCL's next level giving club that keeps the ministry at Rainbow Trail growing and expanding. These individuals have given \$1,000 or more to this great ministry. To join, contact Dave Jarvis 719-276-5233 or find out more and donate online at [www.rainbowtrail.org/donate](http://www.rainbowtrail.org/donate). Many thanks to the following supporters of Rainbow Trail!

### Challenger Peak \$1,000-1,499

Anonymous  
 Roger & Alice Aden  
 Stacy & Nicholas Branca  
 Jim & Cindy Britton  
 Larry & Lavona Brown  
 Emmett & Katherine Cruson  
 Emily & Scott Dalen  
 Jean & Larry Danielson  
 Kurt & Marsha Ehrhardt  
 Sandra & Scott Elvington  
 Don & Lillian Filegar  
 Chris & Stephanie Frankle  
 Gloria & Joel Friesenegger  
 Michael & Karen Fritz  
 Michael & Sarah Graham  
 Tom & Marianne Guinn  
 Dave & Carol Hartenberger  
 June Hartmann & Allan Ochs  
 Annie & Jeff Heath  
 David & Sharon Henneke  
 Stanley & Evelyn John  
 Steve & Linda Jurens  
 Charlie & Linda Kelly  
 Betty Kirsebom  
 Marcus Kochis  
 Mary Koopp  
 Severt & Mary Kvamme  
 Jennifer Lambertus  
 Catherine & Matt Larson  
 Leslie Levad  
 Steve & Nancy Lord  
 Holly & Nick Massie  
 Don & Bernie Mathison  
 Hunter & Janet McDaniel  
 Dawn & Brent Meyer  
 Kim Meyer  
 Jill & Douglas Monsen  
 Janice & James Mulvany  
 James Myra  
 Caitlin & Joshua Nelson  
 Chuck & Gayle Newell  
 Karen Nulle  
 Kim & John Olson  
 Jon & Kate Palmquist  
 Vernon Pettit  
 Clint & Anne Pluenneke  
 Marvin & Nadyne Plugge  
 Rick & Jill Reed  
 Jim & Carol Reppert  
 Rev. & Dr. D. Risendal  
 Keli'i & Karen Rogers  
 Kristen & Mike Saathoff  
 Gary & Kay Schritter  
 Russ & Cheri Sorensen  
 Julie & Mike Speck  
 Ben Spiger  
 May & Pr. Michael Tassler  
 Ruth Von Mosch  
 Karen Wagenknecht  
 Erik & Kim Williams  
 Bob and Aurice Worley  
 Ron & Betty Yergert

### Long's Peak \$1,500-2,499

Anonymous  
 Bruce & Nancy Albertson  
 Ron & Olga Augustson  
 Carrie & Philip Baylis  
 Melissa Beaman  
 Rosetta Bidne  
 Miles & Kim Brown  
 Rick & Charlene Coulson  
 Jay Davis  
 Jack & Donna Dice  
 Paul & Kathy Edstrom  
 Kevin & Janet Flesch  
 Dennis & Lynn Gimlin  
 Tom & Shari Gould  
 Todd & Jill Grivetti  
 Koren Holden & Randall  
 Toney  
 Charlie & Linda Kelly  
 Marcus Kochis  
 Laurie & Clayton Mohler  
 Bob & Andrea Mooney  
 Arthur Norman  
 Chuck & Michelle Nichols  
 Orla O'Callaghan & Paul  
 McCarthy  
 Michelle & Dave Okes  
 Christian & Sarah Parker  
 Jimmy & Shirley Pettigrew  
 Rick Smith  
 Paul & Lisa Smith  
 Mark & Cynthia Stanley  
 Rev. Daniel Tisdell  
 Kathy & Craig Twaddell  
 Kate & Eric Waggoner  
 Marsha Yosten  
 Gene & Cheri Zeller

### Mt. Elbert \$2,500-\$4,999

Anonymous  
 Les Anderson  
 Rick & Pat Bly  
 Tom & Alison Buckett  
 Mike & Connie Burris  
 Dave & Carolyn Carlson  
 Shelly & Gerry Clemen  
 Lindsey Craver  
 Bill & Charlotte Dausses

Phil & Traci Dorth  
 Jan & Rives Duncan  
 Bob & Ann Erickson  
 William Ernstrom & Janie  
 Hanson-Ernstrom  
 Scott & Janet Harrison  
 Ann Hultquist & Roger Loots  
 Vicki & Christian Lieber  
 Cheryl & Stephen Mahon  
 Dawn & Brent Meyer  
 Tara & Chad Sawinski  
 Hanne & Kip Schauer  
 Brenda & Lon Sears  
 Marcia & Bill Smith  
 Austen Smith  
 Michelle & Robert Szydowski  
 Dave Young

### Mt. Princeton \$5,000-\$9,999

Anonymous  
 Jerry Berg  
 Katie Dugan  
 Bob & Margie Dugan  
 Janice Ehlers  
 Ruth Ericson  
 Steve Flessner  
 Dennis & Lynn Gimlin  
 Cathy Goodman  
 Estate of Wilma Gullickson  
 Dave & Nellie Jarvis  
 David & Rebecca Kleen  
 Jeanne & Tim Maloney  
 David & Edie Phillips  
 Ruth & David Ryll  
 Karen Smith

### Crestone Peak \$10,000-\$19,999

Randy & Lisa Schrader

### Mt. of the Holy

#### Cross

\$20,000+  
 Maxine Johnson  
 Nette & Kevin Werling  
 Bob & Joyce Witte

## GIFTS IN MEMORY OF

**In Memory of Mark A. Olson**  
 Elaine Olson

**In Memory of Don Simonton**  
 Dave & Nellie Jarvis

**In Memory of Lydelle Bentz**  
 Mark & Karen Bentz

**In Memory of Aaron Grider**  
 Rick & Jill Reed

**In Memory of Kelsey Rohrbaugh**  
 Kevin & Darlene

**In Memory of Dave Kirberg**  
 Dave & Nellie Jarvis

**In Memory of Dave Ericson**  
 Dave & Nellie Jarvis

## PARTNER CONGREGATIONS

These congregations have committed to partnering with Rainbow Trail by supporting the ministry through their congregation's budget.

Abiding Hope Lutheran Church, Littleton  
 Advent Lutheran Church, Olathe, KS  
 All Saints Lutheran Church, Albuquerque, MN  
 American Lutheran Church, Grand Junction  
 Ascension Lutheran Church, Colorado Springs  
 Ascension Lutheran Church Women,  
 Colorado Springs  
 Atonement Lutheran Church, Boulder  
 Atonement Lutheran Church, Lakewood  
 Augustana Lutheran Church, Denver  
 Augustana Foundation Fund, Denver  
 Bethany Lutheran Church, Cherry Hills Village  
 Bethany Lutheran Church Foundation,  
 Cherry Hills Village  
 Bethany Lutheran Church, Fredericksburg, TX  
 Bethel Lutheran Church, Aurora  
 Bethel Lutheran Church, Colorado Springs  
 Bethlehem Lutheran Church, Los Alamos  
 Black Forest Lutheran Church, Colorado Springs  
 Christ Evangelical Lutheran Church, Santa Fe, NM  
 Christ Lutheran Church, Highlands Ranch  
 Christ the King Lutheran Church, Colorado Springs  
 Christ the King Lutheran Church, Durango  
 Christ the Savior, Aurora  
 Christ the Servant, Louisville  
 Community of Joy Lutheran Church,  
 Rio Ranch, NM  
 Cross of Christ Lutheran Church, Broomfield  
 Cross of Hope Lutheran Church, Albuquerque, NM  
 Cross of Glory Lutheran Church, Denver  
 Evergreen Lutheran Church, Evergreen  
 Faith Lutheran Church, Golden  
 Faith Lutheran Church, Security  
 First Lutheran Church, Colorado Springs  
 First Lutheran Church, Gypsum  
 First Lutheran Church, Longmont  
 Glory of God Lutheran Church, Wheat Ridge  
 Good Shepherd Lutheran Church, Glenwood Springs  
 Grace Lutheran Church, Boulder  
 Grace Lutheran Church, Colorado Springs  
 Holy Cross Lutheran Church, Wheat Ridge  
 Holy Cross Lutheran Church, Overland Park, KS  
 Holy Ghost Lutheran Church, Fredericksburg, TX

Holy Love Lutheran Church, Aurora  
 Holy Shepherd Lutheran Church, Lakewood  
 Holy Trinity Lutheran Church, Littleton  
 Immanuel Lutheran Church, Greeley  
 Joy Lutheran Church, Parker  
 King of Glory Lutheran Church, Arvada  
 King of Kings Lutheran Church, Pueblo  
 Lord of the Hills Lutheran Church, Centennial  
 Lord of the Mountains Lutheran Church, Dillon  
 Lutheran Church of Hope, Broomfield  
 Lutheran Church of the Holy Spirit, Centennial  
 Mount Calvary Lutheran Church, Boulder  
 Mount of the Holy Cross, Vail  
 New Beginnings Church, Denver  
 New Promise Lutheran Church, St. George, UT  
 Our Savior's Lutheran Church, Alamogordo, NM  
 Our Saviour's Lutheran Church, Ft. Collins  
 Peace in Christ Lutheran Church, Elizabeth  
 Prince of Peace Women of the ELCA,  
 Colorado Springs  
 Prince of Peace Lutheran Church,  
 Colorado Springs  
 Prince of Peace Lutheran Church, Denver  
 Rocky Mountain Synod  
 Shepherd of the Hills Lutheran Church,  
 Canon City  
 South Zumbro Lutheran Church WOW, MN  
 Spirit of the Mountain Lutheran Church, Golden  
 St. Andrew Lutheran Church, Arvada  
 St. Luke Lutheran Church, Albuquerque  
 St. Paul Lutheran Church, Albuquerque  
 St. Paul Lutheran Church, Calhan  
 St. Peter Lutheran Church, Greenwood Village  
 St. Peter's Lutheran Church, Marble Falls, TX  
 St. Philip Lutheran Church, Littleton  
 St. Stephen's Lutheran Church, Northglenn  
 Tabor Lutheran Church, Pueblo  
 Trinity Evangelical Lutheran Church, Boulder  
 Trinity Lutheran Church, Fowler  
 Trinity Lutheran Church, Loveland  
 Trinity Lutheran Church, Monument  
 Zion Lutheran Church, Trinidad

## Grace Race Sponsors

### Augustana University Sponsors

Dave and Nellie Jarvis  
 Chris and Vicki Lieber

### CSU Sponsors

Ruth and David Ryll

### Kansas Sponsors

Ruth and David Ryll

### Luther College Sponsors

Addie Choi  
 Ben and Jordan Jarvis  
 Dave and Nellie Jarvis  
 Chris Lovagnini  
 Chris and Vicki Lieber  
 Evan Lieber  
 Hannah Maxa  
 Kirk and Trish Neubauer  
 Andrew and Kirsten Peterson  
 Mark and Heidi Peterson  
 Brandon Reed  
 Rick and Jill Reed  
 Mareda Smith

Austen Smith  
 Hans Thurmer  
 Kelsey Wilson

### Wartburg Sponsors

Cheryl and Kevin Schenk  
 Max and Liz Franks

### Congregation Sponsors

Abiding Hope, Littleton, CO  
 Augustana Lutheran, Denver, CO  
 Bethany Lutheran Church,  
 Cherry Hills Village, CO  
 Bethlehem Lutheran, Longmont, CO  
 Evergreen Lutheran, Evergreen, CO  
 First Lutheran, Colorado Springs, CO  
 Holy Love Lutheran, Aurora, CO  
 Holy Trinity, Littleton, CO  
 Lord of the Hills, Centennial, CO  
 Mt. of the Holy Cross, Vail, CO  
 St. Peter Lutheran, Greenwood Village, CO  
 Trinity Lutheran, Monument, CO

City Market, Canon City, CO  
 Brand Evolutions West, Golden, CO

## TRAILBLAZERS

The following individuals are members of the 2018 Trailblazers Club. Trailblazers is an annual giving club that keeps the ministry at Rainbow Trail alive and growing. To join, contact Dave at 719-276-5233 or check out the "Support Us" portion of our webpage at [www.rainbowtrail.org](http://www.rainbowtrail.org). Many thanks to the following supporters of Rainbow Trail!

### Eagle Peak \$500 - \$999

Anonymous  
 Lannette Abbey  
 Eric & Pam Anderson  
 Roger & Jane Barrack  
 Mark & Karen Bentz  
 Thuliswiwe & Charles M  
 Beresford  
 Chuck & Robbie  
 Breaux  
 David Lee & Lisa  
 Brown  
 Brian & Marisa Carlson  
 Jeff & Trisha Carlson

Charles & Cathrine  
 Craig  
 Dave & Carissa Cruson  
 Mike & Michelle  
 DiLisa  
 John & Kathleen  
 Erickson  
 Craig & Beverly Essex  
 Vince & Leigh Felletter  
 Susan & Dave Fisk  
 Kim & David Guinn  
 Steven Gustafson &  
 Beth Knutson  
 Hannah Harman  
 David & Linda Higbea

Tracey Hovey  
 Bill & Shelly Hunter  
 Stanley & Evelyn John  
 Don & Mary  
 Koppenhaver  
 Eric & Beth Krueger  
 Ben & Bev Larzelere  
 David & Michelle  
 Louis  
 Meg Mansfield  
 Tanda McCombe &  
 Tom McCombe  
 Todd & Mary McNeil  
 Walter & Karyl Meyer  
 Don & Lisa Mietz

Adrian & Andrew  
 Miller  
 Bonnie Mohler  
 Jill & Douglas Monsen  
 Bob & Andrea Mooney  
 Gail & Mark  
 Muehlethaler  
 Delores & Gerry  
 Mueller  
 Craig & Terri Mulford  
 Randy & Gail Mundt  
 Mark Nassen  
 Marcia Oppermann  
 Candy & Larry Ourada  
 Karen Pffor

Charlie & Claire Pineda  
 Willy & Julie Reusser  
 Kevin & Darlene  
 Rohrbaugh  
 Mark & Anne Schwartz  
 Mark Skinner & Lou  
 Ann Cheslock-  
 Skinner  
 Ellen & Michael Stelzle  
 Sarah & Joshua Voigt  
 Tim & Jen Walmer  
 Tom Williamsen  
 Lester & Marianne  
 Woodward  
 Laura Wouters

Becky Zinn-Caulfield &  
 Tom Caulfield

### Rainbow Lake \$250 - \$499

Anonymous  
 Margaret & Norm  
 Aarestad  
 Cheryl Almquist  
 Dawn & Shannon  
 Ambrosio  
 Ellen Baldwin  
 Gary & Patty Bliss  
 Liza & Nathan Blom  
 Larry & Eleanor

## TRAILBLAZERS CONTINUED

Bonicelli  
Jack & Phyllis Brown  
Martha & Clint Calvert  
Jim & Jann Marie  
Crock  
Emily & Scott Dalen  
Ina Kay & Tom Devers  
Andrea Doeden  
Kendra & Steve Dunn  
Frank & Lorie Eby  
John & Kathy Eckhardt  
Carl & Katie Edstrom  
Elizabeth & William  
Erhardt  
Kris Ericson  
Ede Ericson  
Ray & Nicolè Ferry  
Thomas & Mary-Lynn  
Foreman  
Ken & Kay Gerhart  
Eric & Pam Gohl  
Paul & Jeniece Hadland  
Fred Hansen  
Landon Harman  
Ray & Carrie Harney  
John & Peggy Harris  
Donna Hayden  
Haylee Hayden  
David & Carla Herbig  
Kathy & Dirk Hogue  
Edson & Mary Holland  
Gary & Linda Hoover  
Marje & Fred Hoppe  
Alan Ingwersen  
George & Nancy  
Jacobson  
Allison & John Kane  
Craig Kelly  
Dona Kenline  
Douglas & Naoko  
Kohlhepp  
Holden Koblmeier  
Jennifer Lambertus  
David Lindholm  
& Kathy Sasak-  
Lindholm  
Ed & Eunice Mansfield  
Marilyn Maurstad  
Kris & Greg McDaniel  
Adrian Miller  
Jim & Karla Miller  
Halley Nelson  
Sigurd & Dianne  
Nelson  
Brad & Carissa  
Nietfeldt  
Jana & Paul Oman  
Angie O'Rear  
Jerry & Deb Paul  
Paul & Lois Peel  
Dave & Judy Peters  
Alissa & Josh Plumley  
Jon & Jo Powers  
Jeri & Mike Rhodes  
Leo Riedel  
Andrew & Annette  
Roinestad  
Eldene Ronnekamp  
Jim Ruden  
Carl & Emily Sauey  
Rod & Sharie Schofield  
Carl & Gail Schurman  
Richard Sloneker  
Timothy & Lisa Smith  
Jim & Pat Speckmann  
Bob & Janelle Stover  
Linda Stuehrenberg  
Leslie Swetnam  
Robert & Michelle  
Thomsen  
Betsy & John Tuma  
Cindy Weist  
Josh Witkop  
Margot Wright & Dan

Montoya  
Ben & Corliss Wyatt  
Gene & Angie  
Youngmann  
**Base Camp \$120-\$249**  
Anonymous  
Brad & Deb Abbott  
Sarah & Josh Anderson  
Edna Anderson  
Wayne & Ellie Arden  
Keith & Cara Avallone  
Dennis Bagenstos &  
Judy Leiseth  
Mickey & Cindy  
Bannister  
Katherine Betzel  
Christen & Andrew  
Brown  
Jo Ann & David  
Browning  
Joel & Carolyn Buck-  
Gengler  
Heather Campbell &  
Jerry Landeck  
Stephanie Carlberg  
Sharon Cox  
Mark & Pegi Crates  
Jennifer & Todd  
Crosbie  
Jason & Kellie Davis  
Maren Diercks & Paul  
Eppard  
Trudy Dierschow  
Jacob & Becca Dolan  
David Dorow & Wendy  
Clark  
Fred & Nancy Dorth  
Jessica & Todd Doyle  
Swan Ellert  
Todd & Natalie  
Erickson  
Barbara & Chuck Exley  
Scott & Sue Fernau  
Kim & Martin Garrity  
George Golder  
Beth Graham  
Steven & Pamela Haigh  
Daniel & Aimee  
Hanson  
Mia & Scott Harberts  
Ron & Katy Harder  
Greg & Barbara  
Haschke  
Nancy Henning  
Karen Horgen  
Ben Hogue  
Victor & Lois Hoops  
Allan Horton  
Ruth Idler  
Ben Jarvis  
Kitty Jarvis  
Stan & Sandy Johnson  
Dennis Johnson  
Karen & Vineet Joshi  
Daniel Kirschbaum  
Lynda Koenig  
David Kumpe &  
Rosemarie Wipfelder  
Kumpe  
Kelly Knupp & David  
Fox  
Bert & Dolly Lager  
Jean Larson  
Bethany & Todd Laurie  
Kristin & Mike Lavelle  
Benji & Lori Leonard  
Gail & Kay Luttinen  
Phyllis & Randall Lynn  
John & Pam Marietta  
Babs Martin & Tom  
Korpolinski  
Peter & Susan Marty  
Rob Maruyama & Roz

Kueter  
Aimee Mckibbin  
Marilyn & David  
Meline  
David Miller & Anne  
Wenzel  
Joyce Mills  
Bob & Linda Morton  
Danny & Marcia  
Murray  
Patti Nelson  
Lynn Nestingen  
Kristin & Christian  
Nisonger  
Corey & Katie Okes  
Orvid Olson  
Eric & Christina  
Ostovic  
Jeremy & Laurie Palm  
Andrea & Larry Patella  
Kathy Perry  
Mary & Christopher  
Phillips  
Terry & Susan  
Pletkovich  
Ms. Harriet Porch  
Suzanne & Craig Preuss  
Dena Richter  
Tiff & Kevin Roiseland  
Rick & Becky Romano  
Ben & Katie Rude  
Ray & Judy Russell  
Kalie Saathoff  
Katie Scherr  
Kathryn Schmidt  
Tom Silco  
Teak & Clifford  
Simonton  
Maria & Richard Smith  
Gail Strobel  
Brad & Patty Taylor  
Craig Tierney  
Robert & Denise  
Tristano  
Chris & Gail Tucker  
Clarence & Marlyn Ver  
Sluys  
Adele Vickers &  
Nathan Merrill  
Robert & Renee Wade  
Helen Wagner  
Richard Watkins  
Greg & Deb Watson  
Wayne & Peggy  
Welkner  
Vicki & Donald White  
Wayne & Joan White  
Norman & Janet  
Williams  
Kelsey Wilson  
Karen Witt & Jim Puga  
Aurice & Bob Worley  
Terry & Holly Wubbena  
Dee Yocum

A different, yet significant way to support the ministries of Rainbow Trail

## Needs List



These are essential items needed for our day-to-day operations. A designated monetary gift would certainly be welcome as well. You can bring these items with you any time you come to camp or call us to arrange a drop-off or pick-up. Thank you for your continued support!

- |                                       |                                        |
|---------------------------------------|----------------------------------------|
| White 20# copy Paper (Laser quality)  | Long barreled fire lighters (Bic)      |
| Reams of colored copy paper           | 9x12 Manila envelopes (no clasps)      |
| Avery 5366 Labels                     | 6x9 Manila Envelopes (no clasps)       |
| Avery 5164 Labels                     | 10x13 Manila Envelopes (no clasps)     |
| Nalgene Water Bottles (40)            | 12 - 5 ft. round white Lifetime tables |
| Masking tape                          | Rain Jackets & Rain Pants              |
| Scotch Tape                           | 25-gallon Rubbermaid tubs (24)         |
| Duct Tape                             | On-Site and Compass Points Day Packs   |
| Packing Tape                          | Foam Brushes - 1"                      |
| Postage stamps                        | Paintbrushes - all sizes, inexpensive  |
| 8.5x11 Yellow Tablets                 | White File Folder Labels               |
| 8 ft. Rectangle "Lifetime" tables (5) |                                        |

## Wish List

These are larger items that we haven't budgeted for, but would love to have. Contact us if you would like to donate any of these items, new or gently used. You can bring them to camp, or call to arrange a drop-off or pick-up. Thank you for your continued support.



- |                                         |                                           |
|-----------------------------------------|-------------------------------------------|
| Heavy Duty Cotton Work Gloves           | Free Standing Space Heaters (3)           |
| Industrial Mop buckets (call us first!) | GoPro HERO7 Silver                        |
| Sturdy Wheelbarrows                     | Vermeer Brush Chipper                     |
| New Full or single mattress pads        | Freezerless Refrigerator                  |
| New Queen sheets - white                | Dish Cart                                 |
| New Queen mattress pads                 | Phillips 60W & 100W Dimmable LED<br>Bulbs |
| New 3-piece towel sets (20)             | Skid Steer Tire Chains                    |
| Shark Navigator vacuums (4)             | Used Day Camp Vehicle                     |

## Shop Online

It's easy to give a gift from RTLCL's Needs or Wish Lists online. We've pre-selected items that we are looking for and provided links straight to great deals that we've found. There is also a Compass Points specific list online. You can even ship directly to us!

[www.rainbowtrail.org/donate/needs-and-wish-list](http://www.rainbowtrail.org/donate/needs-and-wish-list)

### Administrative Office

107 S. 9th Street, Suite B  
Canon City, CO 81212  
Phone: 719-276-5233  
Fax: 719-276-5235  
Office Hours: 9 am - 5 pm



### Camp Office

P.O. Box T  
3056 County Road 198  
Hillside, CO 81232  
Phone: 719-942-4220  
Fax: 719-942-4000

## Full-Time Staff

- Dave Jarvis, Executive Director.....dave@rainbowtrail.org  
Tammi Schneider, Executive Secretary.....info@rainbowtrail.org  
Aurice Worley, Bookkeeper.....accounting@rainbowtrail.org  
Sam Berglund, Director of Compass Points & Day Camp...sam@rainbowtrail.org  
Daniel Kirschbaum, Director of Retreats.....daniel@rainbowtrail.org  
Cam Regennitter, Director of On-Site & Bridging Borders.....cam@rainbowtrail.org  
Kyle Larson, Director of Site & Facilities.....kyle@rainbowtrail.org  
Chris Seaman, Food Service Manager.....chris@rainbowtrail.org  
Maggie , Program Assistant.....maggie@rainbowtrail.org  
Tyler , Program Assistant.....tyler@rainbowtrail.org

## Board of Directors

- President.....Kevin Fleisch, Augustana Lutheran, Denver, CO  
Vice President.....Rev. Jane Jebesen, Faith Lutheran, Golden, CO  
Secretary.....Rev. Nicolè Ferry, Bethlehem Lutheran, Los Alamos, NM  
Treasurer.....Kathy Twaddell, Atonement Lutheran, Boulder, CO  
.....Rev. Russ Britton, Bethany Lutheran, Denver, CO  
.....Michelle Okes, Bethany Lutheran, Denver, CO  
.....Bill Ernstrom, Faith Lutheran, Golden, CO  
.....Rev. Kathy Armstrong, Cross of Christ Lutheran, Broomfield, CO  
.....Rev. Vera Guebert-Steward, Evergreen Lutheran, Evergreen CO

[www.rainbowtrail.org](http://www.rainbowtrail.org)

## Craving Color?

Rainbow Reflections is available in a paperless, color version! Visit our website to find this edition and many previous editions of Rainbow Reflections in full color. You can also email Tammi at [info@rainbowtrail.org](mailto:info@rainbowtrail.org) to get on our e-newsletter list for more Rainbow Trail information!

We make every effort to list each donor, but mistakes do happen. If we have inadvertently omitted your name or listed you incorrectly, we apologize. Please call 719-276-5233 and let us know so that we can make corrections.