



# Rainbow Reflections

BULK RATE  
U.S. POSTAGE  
PAID  
CANON CITY, CO  
PERMIT #30

Lutheran Outdoor Ministries of the Rockies  
**Rainbow Trail Lutheran Camp**  
107 South Ninth Street, Suite B  
Canon City, Colorado 81212

Volume 26, Number 2 Spring 2014

Rainbow Trail is operated and maintained under authority of a USDA Forest Service Special Use Permit. Rainbow Trail is located in the San Isabel National Forest, USDA.

Address Service Requested

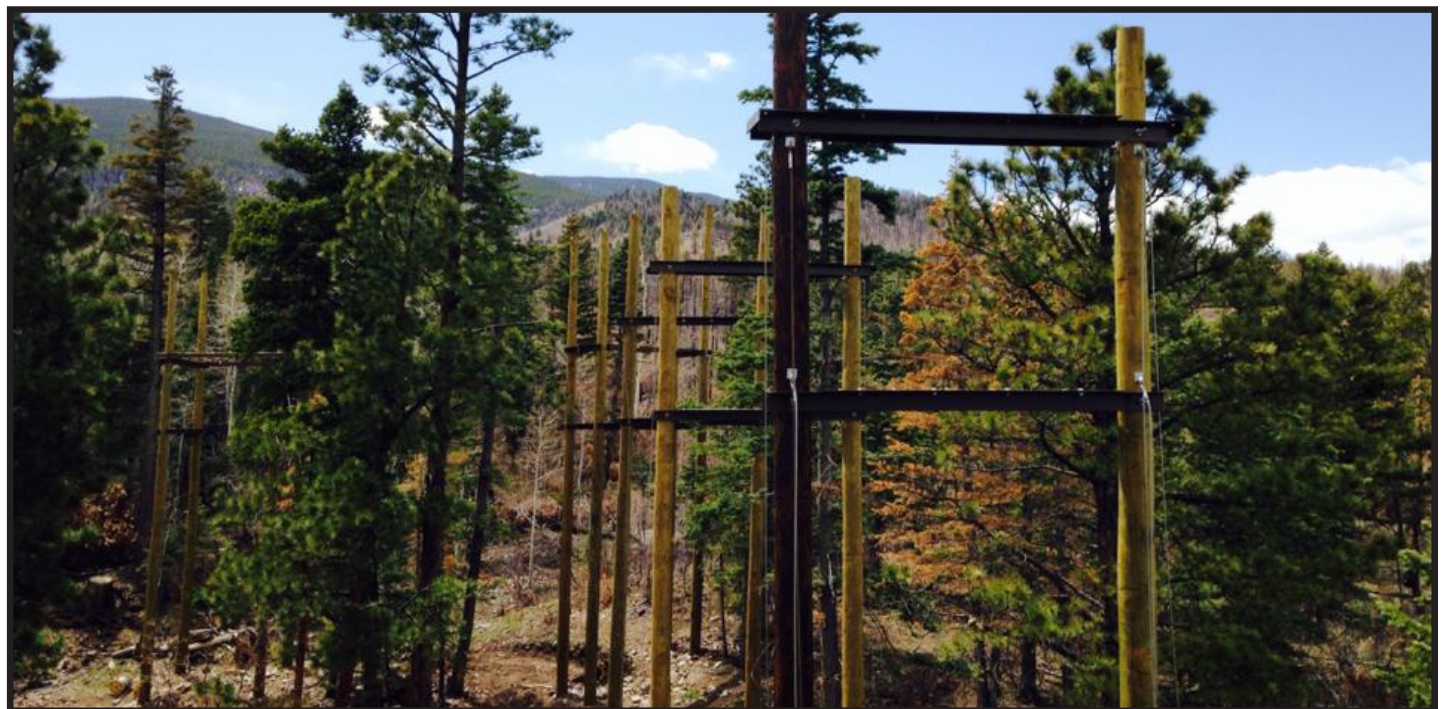
## New High Ropes Course Will Be Ready! Still Need to Raise \$48,000 to Finish Project

There has been nothing more exciting this spring than to see the heavy equipment rolling into Rainbow Trail on April 22nd. That was the sure sign that the construction on the new ropes course was going to finally get started. The timeline for construction has a completion date of June 5th, in time for staff to train on the course before the first week of camp!

As you may remember, back in the fall of 2011, a devastating windstorm laid our entire ropes course on the ground. It took almost a year to clear away the area and envision the possibilities of a new ropes course. Much of 2012 and 2013 was spent in creating the new design, getting engineered drawings, receiving Forest Service approval, and planning the installation timeline.

Adventure Experiences, Inc. will be building the course. AEI built our original course and is a trusted partner as we go forward. The poles for the entire course are already in the ground and steel has already been installed. Platform and guy wire work should begin very soon.

The new ropes course will cost Rainbow Trail about \$184,000.



View from the entrance of the course. The first element will be a cargo net stretching from the ground up to the first platform.

So far, we have raised \$136,000 for the course. We still need to raise about \$48,000 to fully pay for the ropes course. We are moving forward in good faith so the course is ready for summer, hoping that the support for the remaining funding for this course will

come in soon. We will need generous gifts from individuals, congregations, and organizations to attain our goal. The RTLCL Staff Alumni have already raised close to \$10,000 and want to challenge all of you to give and give generously to finish the ropes course project.

If you would like to support this life-changing activity for our campers, you can make a gift designated to the ropes course. You can also donate online at [www.rainbowtrail.org/donate](http://www.rainbowtrail.org/donate). We really need gifts of all sizes to reach our goal. Larger gifts can easily be used as matching challenge gifts if you would like to give your gift that way. Matching gifts are a great way to encourage others to give. If you would like to make a larger gift or a stock gift to support this cause, please contact Dave Jarvis at 719-429-1377 for more details. Help us finish the course!!

### Inside this issue...

- Trail Boss.....p.2
- Men's Fly Fishing Retreat.....p.2
- Colorado Gives Day..... p.2
- Site to Sight.....p.3
- Thank you PGAs.....p.3
- California Pizza Kitchen.....p.3
- Meet the 2014 Summer Staff...p.4-5
- He Be Jammin.....p.6
- Ben There, Done That.....p.7
- Wish/Needs List.....p.8

**"We still need to raise about \$48,000... Help us finish the course!"**

*Donate to the Ropes Course Fund Today!*



### Rainbow Trail Mission Statement

Through the ministries of Rainbow Trail Lutheran Camp, God claims us, Christ transforms us, and the Holy Spirit sends us for faithful service.



## Trail Boss

By Dave Jarvis - Executive Director

It has been an amazing spring for this ministry. So many cool things are happening and God is obviously in the middle of all of it. We have received incredible gifts including two GoPro cameras, a digital still camera, a new 15-passenger van, a 6-wheeler for Kyle to use with maintenance, and a major gift for camperships for kids coming to camp this summer. I love that this ministry is on the hearts and minds of people. Thanks for making a difference!

This time of the year is crazy for us! Final preparations for summer, providing our staff online spring training, attending Synod Assembly, leading retreats, buying all the clothing for popshop and equipment we need to provide our ministry are just SOME of the things we are doing right now. The craziness is all worth it because campers will be arriving in less than a month. I love that we can be a part of the faith development of so many of your children. It is a task we take very seriously. Thanks for trusting us!

Registrations are strong again for summer and most weeks are full or very close to full. However, there is still time to register for camp! If you haven't registered yet, do it today. It is easy and can all be done online. There are still some senior high camp spots available in both weeks as well as some intro spots. Double check when your school starts for the fall. Lots of schools don't start until after camp is over and there is still a lot of room in that last week of camp. Don't miss out on the chance to be at camp with our great staff. If money is an issue, email me and let's talk. Don't let finances be the reason for not coming to camp. We have camperships available for that purpose. There are no forms to fill out, and you don't need to share any private information. Take advantage of this opportunity to help your child have the best week of their summer at Rainbow Trail!

Our summer staff will soon be here! Our Directors arrive on Monday, May 19th and the rest of our ministry team arrives on Memorial Day. We are so excited about this team and all they will have to offer our campers. This is a great group! More than half of this team is from the Rocky Mountain Synod. Please keep them in your prayers as they prepare for this summer. May God use them in amazing ways this summer!!

Construction on the new ropes course began in earnest on April 23rd. The expectation is that the course will be done by the end of staff training and be ready for the first week of camp. We still need to raise about \$48,000 to finish this project. You can send a gift earmarked for the ropes course. Help us get this finished!

The land exchange continues to move forward. The Board closed on the non-federal parcel of land needed for the exchange in February and we will be part of a site visit to both properties with the Forest Service in May. A lot more information is coming very soon!

We continue to need your support for this ministry through prayer, through your sweat, and through your financial gifts. You can choose how you want to support – whether it is annual fund, ropes course, the land exchange, or even camperships. Our requests for camperships continue to grow. We will give out about \$16,000 in camperships for kids to attend camp this summer. But money will never be a reason a child can't come to RTLC. We will find a way to make it all work. Gifts of all sizes, large and small, make this ministry run. If everyone will do something to financially support RTLC, it will make an enormous difference. And the return on this investment will be tremendous – that is a promise!!!!

This spring has affirmed why I continue to do what I do for a living. I work with the best people in the world, both full-time and summer staff. We serve and are supported by the greatest and most generous people in the world. And we get to do it all through an incredible place that is a little slice of heaven. I really couldn't ask for more. This is the best job in the world! God uses all my gifts to serve literally thousands of people every summer. It gets no better than that! Thanks for the blessing of serving you another summer. This is summer #26 for me. I can't wait! See you at camp!!

Until next time...

*Dave*

### Don't Miss The Men's Fly Fishing Retreat September 11-14, 2014

Take some time to step out of the stresses of ordinary life and into the refreshing waters of the Arkansas River. This weekend of fly fishing, hanging out with the guys, and amazing worship and conversation is led by Pastor Dave Risendal. His deep love of fly fishing and the gospel will help you re-center and deepen your faith. Expand your fly fishing skills with instruction from Greg Felt, owner of Ark Anglers Fly Shop, fly tying workshops, and advice from other seasoned fishermen. Whether you are an experienced angler or just want to try fly fishing, this is a weekend you won't want to miss! The \$195 program fee includes meals and lodging. Don't have gear? No problem, we can connect you with rental equipment at a great price. We can also make arrangements to hire guided fly trips through Ark Anglers if desired. To get more information, contact Ben, 719-431-0050 or ben@rainbowtrail.org.



Get More Information and Register Online  
[www.rainbowtrail.org/retreats/mens-retreats](http://www.rainbowtrail.org/retreats/mens-retreats)

## Mark your Calendar: CO Gives 2014



Support RTLC on Colorado Gives Day! On Tuesday, December 9, 2014, Coloradans as well as any supporters will come together again to raise millions of dollars for nonprofits like Rainbow Trail. Last year, a remarkable \$20.9 million was distributed to Colorado nonprofits. RTLC raised

close to \$42,300 in that 24-hour period. Our goal for 2014 is to raise \$50,000. All funds raised will go towards the Annual Fund. Since we are still in the middle of the land exchange process and fundraising for the new ropes course, some

people have shifted their annual fund donation towards the Capital appeal. But we still need our annual fund to sustain day-to-day operations. Mark your calendars and make a difference!

**December 9, 2014**

### Designate your Thrivent Choice Dollars to RTLC and Help Great Ministry Happen!

Thrivent Financial for Lutherans has a charitable giving program called Thrivent Choice. Each member is allocated a set amount of money to give to the Lutheran organizations of their choice. Last year, Rainbow Trail received \$38,131 from this program. Our goal for 2014 is \$40,000. We hope that you will designate your allocated dollars to Rainbow Trail Lutheran Camp. You will need to go out to the Thrivent website quarterly to designate your Thrivent Choice dollars. We know that is a lot to remember and we can help. If you will let us know that you have designated your Thrivent Choice dollars to Rainbow Trail, we can send you either an email or a postcard quarterly to remind you to go out and designate your dollars. If you haven't designated your Choice dollars to any organization, just follow the steps below to designate them to Rainbow Trail. Here are step by step instructions on how to designate your funds.

1. Log on to [www.thrivent.com](http://www.thrivent.com)
2. Sign in with your username and password or register for an account.
3. Once you have registered and signed in, select the "Direct Choice Dollars" button for Thrivent Choice in the right hand side.
4. In the middle of the next page, type "Rainbow Trail Lutheran Camp" in the "Organization Name" box, leave "City" blank, and click search.
5. Next to our camp name, you will click the "Direct Now" button. You will be able to assign all or part of your Choice dollars to us. You can also set it up so Rainbow Trail continues to get your future Thrivent Choice Dollars as well.
6. Click the "submit" button and your Thrivent Choice Dollars will be sent to our ministry, or call 1-800-847-4836 and say "Thrivent Choice" at the prompt.

This is just one more way that you can give to support this ministry. Encourage your friends that are Thrivent members to do the same! If you have any questions, call Dave at the Canon City office.

### Are YOU Willing?



If you could make a gift that literally impacts generations of future campers at Rainbow Trail, wouldn't you jump at the chance to do that? Well, there is a very simple way you can do that. Rainbow Trail depends on the support of generous people to do its ministry. A very simple and easy way to make a difference is to include Rainbow Trail in your will as the beneficiary of an estate gift or as the beneficiary of life insurance policy. By naming Rainbow Trail in your will, you will become a member of the Sangre de Cristo Society. This group becomes the foundation upon which the future of the ministry of

Rainbow Trail will be built. Your gift will reach beyond your lifetime and ensure that the Gospel will continue to be shared through this ministry for generations to come. Two great examples of this are the estates of Pauline Hammond and of Maxine Johnson who provided gifts that are helping build our new ropes course. If you have already included Rainbow Trail in your will, let us know so we can include you in the list of members of the Sangre de Cristo Society. For more information, please contact Dave in the Canon City office.



# Site to Sight

By Kyle Larson - Director of Site and Facilities

Happy Spring from the mountains! Things are finally starting to green up as the site slips out of the hard grip of winter. It seemed that winter would never end this year, as we got snow all the way up until May! As much as I want to take the plow off the truck, I'm certain that the second I do, we'll get another foot of snow. Spring time in the Rockies is anything but predictable!

All of the snow certainly hasn't slowed people from taking advantage of our new retreating model. The retreat season was a huge success and busier than ever. It makes the cold months go by much quicker when I can check things off my list and get some human interaction at the same time. We were fortunate enough to have the group from Holy Ghost Lutheran Church in Fredericksburg, TX come back for another spring break trip in March. They're always a blast to have and do fantastic work. This year they put a new wood floor in Kinnickinnick and gave the Indoor Chapel a total facelift. We also had a group from Abiding Hope Lutheran Church in Littleton, CO. They painted a good portion of Bristlecone Lodge in a little less than two days! If you haven't had a chance to check out our Facebook page for a while, be sure to do it. We've been updating it almost daily with the latest on what's happening with the site and our preparation for summer.



Speaking of summer, as I write, there is a crew working on the high ropes course. It's finally starting to look like more than just poles in the ground. Steel has been put up and decking is starting to go on the platforms. Even though it's only two guys working, I'm amazed by how much they can get done in a day! It's been a long spirit-filled journey to get here but I'm excited to say that we will finally have our ropes course back this summer!

This time of year brings about a long list and what seems like too few hours to accomplish that list. Memorial Day work weekend is just around the corner, which leaves me spending lots of time thinking about projects and site improvements. It's exciting to have so many people committed to this ministry and willing to give of their time to make it shine before summer. This year's Memorial Day will be busy as always. There are a lot of big projects on the list, so be sure to stop by this summer and take a look.

Although this is the busiest time of the year, I've been surprised by the calm that I can find in the storm. It seems that I can find at least a few moments each day to take in the beauty and wonder that surrounds me at camp. I'm so grateful to have a job that I love and that I can be fully myself and exactly who I am called to be. I hope that as life ramps up and summer begins, that you are all able to find a bit of calm in the storm.

Peace, Kyle



## We Want to Thank YOU!

One of our very generous donors gave us a gift on December 11, 2013 of 10 shares of Sysco stock through Transamerica as a year-end gift. Because of the privacy rules, the broker can't tell us who gave us this gift of stock. We are able to figure out most stock gifts, but this one has us baffled. If this is you, please let us know! We want to thank you!!!



### Weeks Are Almost Full - Register Today

- |  |  |
|--|--|
| Junior High #1 Just <b>4 boys Left</b> | JH Compass Points Just <b>7 Left</b>   |
| Intro to Camp #1 Just <b>8 Left</b>    | Senior High #1 Just <b>9 boys Left</b> |
| Intro to Camp #2 Just <b>27 Left</b>   | Senior High #2 Just <b>44 Left</b>     |
| Intro to Camp #3 Just <b>10 Left</b>   | SH Compass Points Just <b>9 Left</b>   |
| Junior/Jr High #3 <b>72 Left</b>       | Into the Wild Just <b>5 Left</b>       |

Check [www.rainbowtrail.org](http://www.rainbowtrail.org) for up-to-date status of each week and register today!

## A Successful California Pizza Kitchen Fundraiser

A huge thank you to everyone that participated in the California Pizza Kitchen fundraiser this past March. Spanning over 6 California Pizza Kitchen locations in the front range, we raised \$897.69. Our staff had a chance to meet and eat with folks at the Briargate CPK in Colorado Springs. The



people and the conversation were definitely the best part of the evening. Thank you for your incredible support; we definitely felt the love! We are planning on keeping this fundraiser in the future. Keep your eyes and ears open for dates and locations! We are very blessed to have such great supporters!

## The 8th Annual Grace Race

The date has been set! Please join us on Saturday, October 4 for the 8th Annual Grace Race. The race will begin at 4 pm with check-in beginning at 2:30 pm. We will be grilling after the race as we did last year. This year we will again be partnering with the Rocky Mountain



Synod World Hunger appeal. We are hoping to again have a representative from the ELCA office in Chicago joining us. Can't wait to see you all there to support the World Hunger Appeal. We're hoping to have 400 runners and raise \$10,000 this year for World Hunger.

## Thank You Program Assistants



If you've been to RTLCL during the past nine months, then you've met Jen Pulscher and Krista Monson. Jen and Krista are the wonderful and talented Program Assistants who have helped us host over two thousand people at RTLCL retreats and events since September. The gifts and energy that they shared with us are very much appreciated, and they quickly became an integral part of our staff team. Jen has accepted a position as Youth and Faith Formation Director at Holy Love Lutheran Church in Aurora. Krista has accepted a position as a Ministry Associate with Luther Crest Lutheran Bible Camp and Bethesda Lutheran Church in Alexandria, Minnesota. We hope to see them both back at Rainbow Trail in the near future.

The Program Assistant position is a nine month internship program for those wanting to learn more about working in full-time outdoor ministry. Participants help in all areas of the retreat season including office work, retreat hosting, general maintenance, and program planning. They also go through training sessions to learn about the many facets of camp leadership and help them develop their own Outdoor Ministry philosophies.

Thank you Krista and Jen for your hard work and dedication to RTLCL's ministry; know that you will always have a home at Rainbow Trail.

## Remember Your Friends and Family in a Lasting Way



Want a great way to remember or honor a loved one and make a difference in the faith life of thousands of children? We have a way! Rainbow Trail now has Memorial, Honor, and Thanksgiving packets that we can send you that make it easy to celebrate the life of someone you love. Memorial gifts can be made at the time of death of a loved one or friend, on the anniversary of the person's birth, or of a couple, on their anniversary. Thanksgiving and Honor gifts can be made at any time in celebration of a person, couple, or group of people. Marriages, wedding anniversaries, confirmations, and retirements are just some of the events that provide occasions for honor gifts. The packet includes a card to send to the family or individual, letting them know that you have made a special gift to Rainbow Trail and an envelope to mail your gift to us. We will list the names of the memorialized/honorees in Rainbow Reflections along with those contributing the gift. If you would like a packet sent to you, email Dave at [dave@rainbowtrail.org](mailto:dave@rainbowtrail.org) and we'll send one out right away.



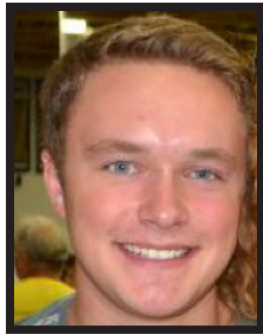
# Here they come...it's time to meet



**Kenny Blair**  
Counselor  
University of Colorado  
Cañon City, CO



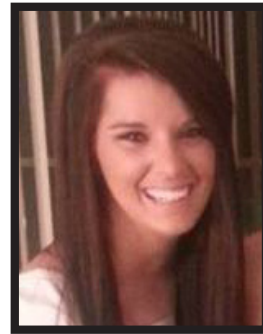
**Olivia Bergren**  
Counselor  
Colorado State University  
Colorado Springs, CO



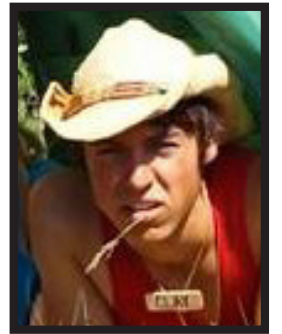
**Ben Bonser**  
Counselor  
Gustavus College  
Palmer Lake, CO



**Millie Reeves**  
Travel Director  
Regis University  
Broomfield, CO



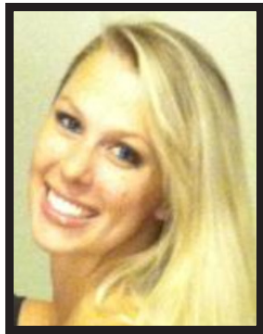
**Mack Nading**  
Ropes Course Coordinator  
Iowa State University  
Elgin, IA



**Clay McCombe**  
Counselor  
Colorado Mesa University  
Colorado Springs, CO



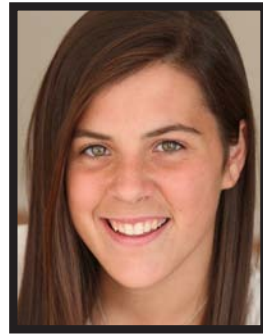
**Mae Grigsby**  
Camphand  
Monarch High School  
Superior, CO



**Katrina Mundt**  
Arts and Crafts  
Florida State University  
Tallahassee, FL



**Mac Ritter**  
Counselor  
University of Colorado  
Evergreen, CO



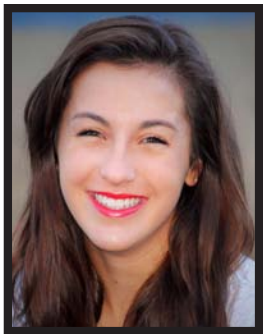
**Jill Nilsen**  
Counselor  
St. Olaf College  
Edina, MN



**Katie Briley**  
Compass Points Director  
Colorado State University  
Broomfield, CO



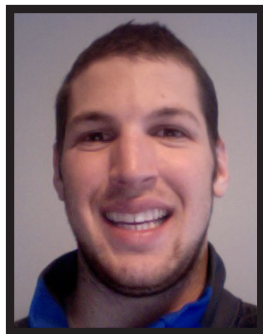
**Greg Dorow**  
Counselor  
Luther College  
Maple Lake, MN



**Elise Delaware**  
Guitar Instructor  
Fairview High School  
Louisville, CO



**Carl Meyer**  
Counselor  
Colorado State University  
Albuquerque, NM



**Cole Jessen**  
Travel Director  
Luther College  
Mendota Heights, MN



**Katharine Jones**  
Counselor  
Gonzaga University  
Boulder, CO



**Emma Lathrop**  
Counselor  
University of Arizona  
Edwards, CO



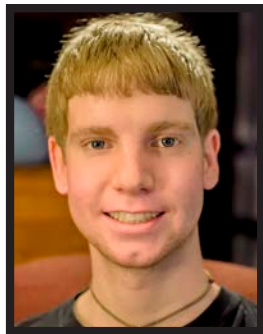
**Phil Johnson**  
Counselor  
Luther College  
Andover, MN



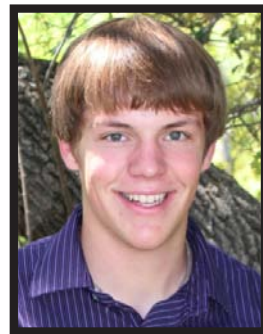
**Reagan Herber**  
Counselor  
Texas A&M  
Fredericksburg, TX



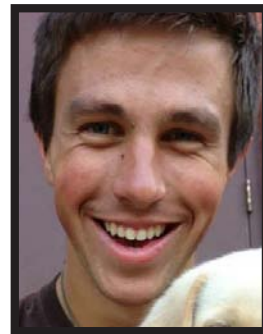
**Sean Kinney**  
Summer Facilities Director  
Metro State University  
Lakewood, CO



**Kirby Olson**  
Counselor  
Luther College  
Lake City, IA



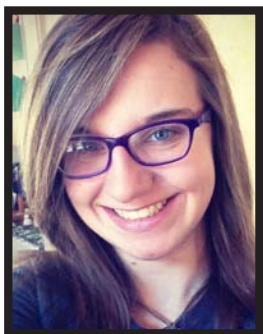
**Seth Moellering**  
Camphand  
Fredericksburg HS  
Fredericksburg, TX



**Prescott Delaware**  
Ropes Course Coordinator  
Colorado State University  
Louisville, CO



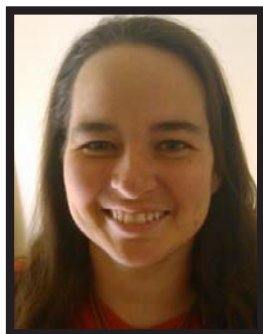
**Jessica Craver**  
Counselor  
University of Colorado  
Colorado Springs, CO



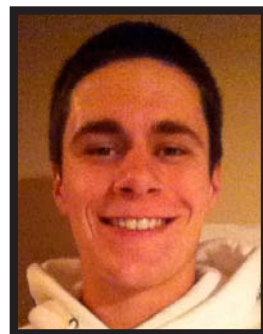
**Asta Jensen**  
Stewardship Coordinator  
University of Colorado  
Pueblo West, CO



**Mitch Helton**  
Travel Director  
Pacific Lutheran Univ.  
Colorado Springs, CO



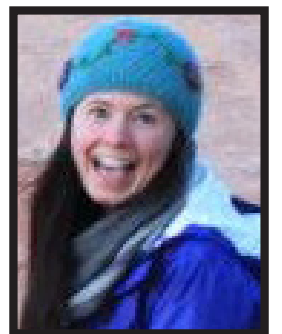
**Amy Sutula**  
Nurse  
Loveland, CO



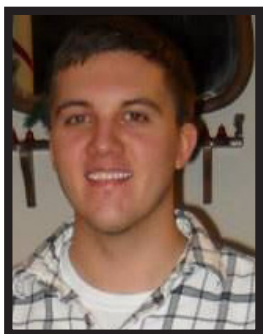
**Cody Christensen**  
Counselor  
Gustavus Adolphus  
Luverne, MN



**Olivia McSpadden**  
Travel Director  
Capital University  
Fort Collins, CO



**Katie Larson**  
Counselor  
Luther College  
Andover, MN



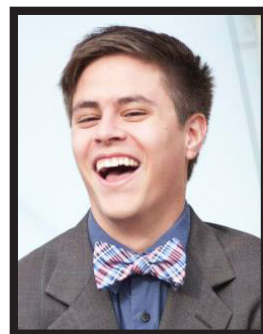
**Mark Nassen**  
Compass Points Director  
South Dakota State Univ.  
Sioux Falls, SD



**McKenzie Wedel**  
Counselor  
Hastings College  
Colorado Springs, CO



**Kristin Lynn**  
Counselor  
Ithaca College  
Albuquerque, NM



**Koby Edler**  
Counselor  
Wartburg College  
Fairbank, IA



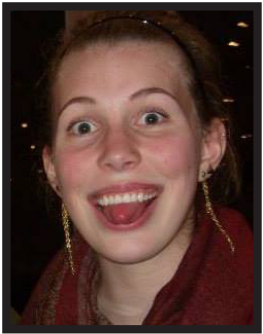
**Elsa Meyners**  
Camphand  
Clarksville Academy  
Clarksville, TN



**Jake Hess**  
Counselor  
Boise State University  
Highlands Ranch, CO



# The 2014 Rainbow Trail Summer Staff



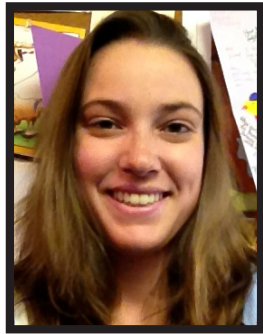
**Savannah Schneider**  
Compass Points Director  
Pacific Lutheran Univ.  
Louisville, CO



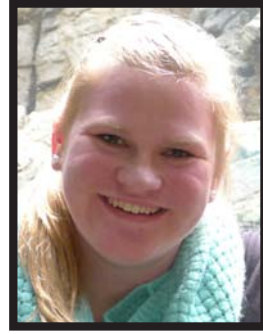
**Cami Kopetka**  
Office Assistant  
University of Nebraska  
Lincoln, NE



**Bryan Adams**  
Counselor  
University of Kentucky  
Albuquerque, NM



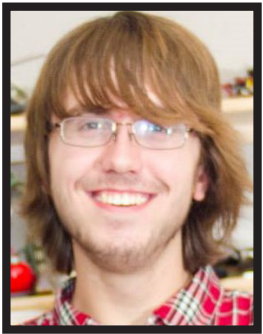
**Mara Erhardt**  
Counselor  
University of Arizona  
Boulder, CO



**Kalie Saathoff**  
Counselor  
Pacific Lutheran Univ.  
Pueblo, CO



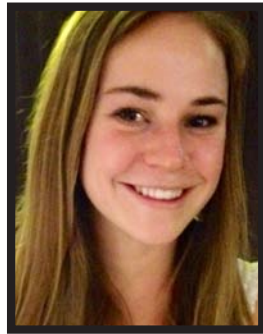
**Katie Scherr**  
Support Staff Director  
Luther College  
Oconomowoc, WI



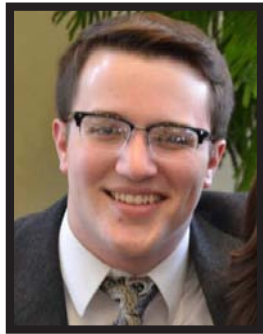
**Brady Risendal**  
Counselor  
University of Colorado  
Centennial, CO



**Megan Muehlethaler**  
Counselor  
Colorado Mesa University  
Eagle, CO



**Erika Balk**  
Counselor  
Luther College  
Colorado Springs, CO



**Chad Nelsen**  
Compass Points Director  
Wartburg College  
Rock Valley, IA



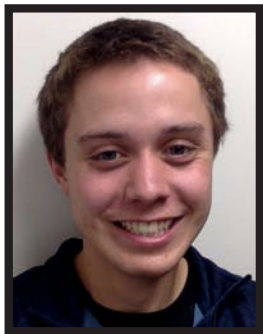
**Josh Rogerson**  
Camphand  
Vista Ridge High School  
Colorado Springs, CO



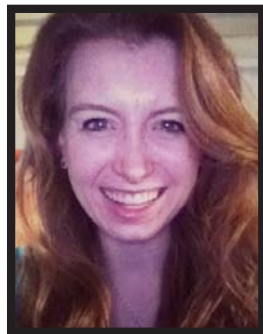
**Lizzy Myra**  
Camphand  
Monarch High School  
Louisville, CO



**Beth Harrison**  
Counselor  
Texas Christian University  
Colorado Springs, CO



**Andy Queen**  
Counselor  
California Lutheran Univ.  
Evergreen, CO



**Annie Peasley**  
Travel Director  
Augustana College  
Elk Point, SD



**Elaina Fenstermacher**  
Videographer  
Clarion University  
Renfrew, PA



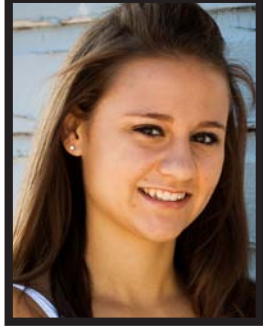
**Dean Klinkerman**  
Camphand  
Fowler High School  
Fowler, CO



**Katie Romano**  
Counselor  
Augustana College  
Cañon City, CO



**Gustav Meyners**  
Counselor  
Lenoir-Rein Univ.  
Clarksville, TN



**Erin Jensen**  
Camphand  
Centennial High School  
Pueblo West, CO



**Lauren Bender**  
Counselor  
Colorado State University  
Englewood, CO



**Eugene Rabenandrasana**  
Counselor  
Madagascar



**Jordan Okes**  
Maintenance Assistant  
Front Range  
Centennial, CO



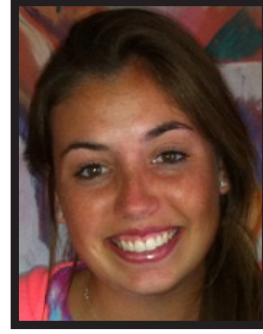
**Hanna Werling**  
Counselor  
Augustana College  
Watertown, SD



**Ranja Adriamanana**  
Woodcarving Instructor  
University of New Mexico  
Albuquerque, NM



**Evan Smith**  
Counselor  
Illinois Wesleyan Univ.  
North Liberty, IA



**Ashleigh Clinkenbeard**  
Travel Director  
Indiana University  
Valparaiso, IN

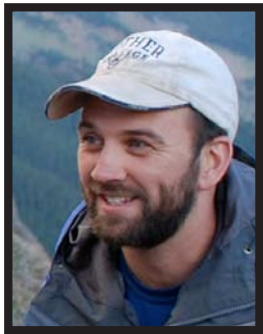


**Sara Marietta**  
Executive Secretary  
Cañon City, CO



**Dave Jarvis**  
Executive Director  
Cañon City, CO

**Nellie Jarvis**  
Intro Camp Director  
Cañon City, CO



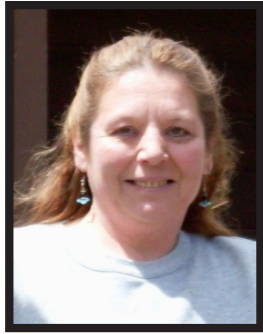
**Ben Larson**  
Director of Compass  
Points & Day Camp  
Cañon City, CO



**Kyle Larson**  
Director of Site & Facilities  
Salida, CO



**Ben Jarvis**  
Director of On-Site &  
Bridging Borders  
Colorado Springs, CO



**Chris Seaman**  
Food Service Manager  
Hillside, CO



**Aurice Worley**  
Bookkeeper  
Cañon City, CO



# He Be Jammin

By Ben Jarvis - Director of On-Site & Bridging Borders

There are so many things to be enthusiastic about during this time of year! It is surreal to me that we are only weeks away from my first summer as a full-time staff member at Rainbow Trail. Although I've been on staff many summers in the past, this summer comes with it a special excitement. The staff that has been called to this place to serve for three months is going to be an absolutely amazing team in ministry this summer, and I am truly blessed to have a job where I can be one of their directors.

This summer will be the first in three years that we will have a high ropes course. It feels like this has been a long time coming and I can only imagine how this will transform the experience for so many people who set foot on our site. This course is right in line with our philosophy and style of programming, which will only improve the way that campers connect with and rely on one another at RTLCL. It's fair to say that this is a very big step for this organization, and I'm honored to be a part of it and ecstatic to see it in action!

Bridging Borders is another source of energy for me in the month prior to camp. Having been directly affected by these trips in the past, both as a participant and as a staff member, this program is near and dear to my heart. Each and every one of these trips going out into the world this summer on a Bridging Borders trip is looking outstanding. My hope is that these weeks of service and growth will be an opportunity for those participating to see Christ and share God's love in places that may be unfamiliar to them, and that they bring away a renewed sense of service and understanding of their faith.

I've loved learning so much in this new role of mine during the retreat season and cannot express how excited I am for the challenge of my first summer. Being in a position where I get to explore my faith with others in the midst of an excellent Bible study, be in the wilderness for three straight months, hear incredible staff witnesses, play guitar, and be around inspiring kids is like a dream to me! I sometimes have to remind myself that it is my full-time job. I'm truly blessed to be where I am.

I'm so ready to charge into summer with an incredible, spirit-led staff. I'm energized by the thought of campers lined up outside of the Pavillion on the first Sunday afternoon of summer and by the inevitable creativity that will ensue during Village of the Day planning. I hope to see you all there at some point this summer so that we can experience it together!

Peace,




## PATHFINDERS

The following individuals are members of the 2014 Pathfinders' Club. Pathfinders is RTLCL's next level giving club that keeps the ministry at Rainbow Trail growing and expanding. These individuals have given \$1,000 or more to this great ministry. To join, contact Dave Jarvis 719-276-5233 or find out more and donate online at [www.rainbowtrail.org/donate](http://www.rainbowtrail.org/donate). Many thanks to the following supporters of Rainbow Trail!

### Challenger Peak \$1,000-1,499

Eric & Elizabeth Berrill  
Rosetta Bidne  
Larry & Lavona Brown  
Dave & Carissa Cruson  
Jay Davis  
Darren & Amy DeYoung  
Jack & Donna Dice  
Phil & Traci Dorth  
Katie Dugan  
Chris & Stephanie Frankle  
Abbie & Steve Freeman  
Dennis & Lynn Gimlin  
Tom & Marianne Guinn  
Karl & Wendy Gustafson  
John & Peggy Harris  
Scott & Janet Harrison  
David & Sharon Henneke  
Bill & Janille Hicks  
Keith & Jean Hovland  
Betty Kirsebom  
Marcus Kochis  
Mary Koepp  
Vicki & Christian Lieber  
Cheryl & Stephen Mahon  
John & Pam Marietta  
Hunter & Janet McDaniel  
Mark & Kim Meyer  
Chuck & Gayle Newell  
Karen Nulle  
Jens & Emily Oien  
Jon & Kate Palmquist  
Jimmy & Shirley Pettigrew  
Marvin & Nadyne Plugge

David & Betsy Risendal  
Walter & Chris Roberts  
Andrew & Annette  
Roinestad  
Ruth & David Ryll  
Gary & Kay Schritter  
Mark & Anne Schwartz  
Karen Smith  
Julie & Mike Speck  
May & Michael Tassler  
Gary & Marilyn Titus  
Kathy & Craig Twaddell  
Ruth Von Mosch  
Tim & Jen Walmer  
Ron & Betty Yergert  
Marsha Yosten

### Long's Peak \$1,500-2,499

Bruce & Nancy Albertson  
Mary & Gary Bender  
Mark Burris  
Coleen & Scot Costar  
Kurt & Marsha Ehrhardt  
Bob & Ann Erickson  
Dave & Ruth Ericson  
Tom & Shari Gould  
Ann Hultquist & Roger  
Loots  
Dawn & Brent Meyer  
Ken & Sheryl Mielke  
Janice & James Mulvany  
James & Judy Myra  
Rick & Jill Reed  
Todd & Patricia Sauey

Hanne & Kip Schauer  
Corey & Jeanette Stull

### Mt. Elbert \$2,500-\$4,999

Les Anderson  
Rick & Pat Bly  
Miles & Kim Brown  
Stacy & Nicholas Branca  
Tom & Alison Buckett  
Mike & Connie Burris  
Darwin & Helen Dalzell  
Bob & Margie Dugan  
Jan & Rives Duncan  
Fred & Janice Ehlers  
Don & Lilian Filegar  
Dave & Nellie Jarvis  
Jennifer Lambertus  
Todd & Mary McNeil  
Gary & Bev Oppedahl  
Randy & Lisa Schrader  
Brenda & Lon Sears  
Marci & David Wait  
Dave Young

### Mt. Princeton \$5,000-\$9,999

Jeanne & Tim Maloney  
Laurie & Clayton Mohler  
Chuck & Michelle Nichols  
David & Edie May Phillips  
Marcia & Bill Smith  
Michelle & Robert  
Szydlowski  
Bob & Joy Witte

## DESIGNATED GIFTS

Bruce & Nancy Albertson  
Greg Dew  
Paul Hadland  
Kevin Perkins  
Marsha Yosten

## BART LARZELERE MEMORIAL CAMPERSHIP ENDOWMENT

Christ Evangelical Lutheran Church-  
Santa Fe  
Rollin & Cheryl Whitman

## GIFTS IN MEMORY OF

### Ann Smith

Anonymous  
James & Deena Hilbert  
Tim & Amy Kessler  
Kevin & Catherine  
Lawrence

### Aaron Grider

Brittany Grider  
Rick & Jill Reed

### Alice Bidne

Rosetta Bidne

### June Simonton

Dave & Nellie Jarvis

### Sandra McCallister

Marci & David Wait

### Karen Hadland

Paul Hadland

### Wayne & Trudy Jarvis

Dave & Nellie Jarvis

### William

Jim & Laura Lewis

### Daniel Ray Benson

Virginia & Tom Crow

### Kelsey Rohrbaugh

Kevin & Darlene  
Rohrbaugh

### The Porch Family

Harriet Porch

### Jerry Nelson

Holly & Nick Massie

### Bob Sellberg

Virginia Sellberg

### Leeland & Ellen Soker

Aletha Bennett  
Melvin Bunde  
Fred & Helen Disque  
Colleen Hohlen  
Mildred Lantefiled  
Beverly Ochterbeck  
Southard  
Kathryn Panfli  
Charles & Dorothy Randall  
Ruth Schanke  
Jim Scherer  
Paul & Darlene Scherer  
Jo Ann Soker  
Doris Stipech  
Rob Thurston  
Thomas & Jane Tonniges

## GIFTS IN HONOR OF

### In Honor of the Rev. Don Simonton

Scott & Kristi Beebe  
Cliff & Teak Simonton

### In Honor of Don Kreger's Birthday

Lloyd & Dorothy Stivers

### In Honor of Carl & Christopher Hadland

Paul Hadland

### In Honor of Kaleb Sutherland

Frank & Ange-La  
Sutherland

### In Honor of Kathy Twaddell

Paula Selland

### In Honor of Scott Wiggans

David & Deborah Wiggans

### In Honor of Dr. Paul Smith & Family

Beth Davis

### In Honor of Landon Harman

Scott & Susan Harman

### In Honor of Heather Kistler

Sandy & Van Kistler

### In Honor of Lynette Kistler

Sandy & Van Kistler

### In Honor of Ryan & Ethan

Gail & Kay Luttinen

### In Honor of Patrick M Brady

Amy Maybon

### In Honor of Lindsey

Deb & Dan Austin

### In Honor of all the Trinity Kids that helped make memories at camp

Becca Sager

### In Honor of Harold & Nancy Skinner

Mark Skinner & Lou Ann  
Cheslock-Skinner

### In Honor of Scott Arndt

Kevin Howard

### In Honor of Karin Arndt

Nancy Howard

### In Honor of our parents' birthdays

Todd & Jill Grivetti

### In Honor of Roberta Wentworth's 50th Birthday

Katherine Thompson  
Roberta Wentworth

## PARTNER CONGREGATIONS

These congregations have committed to partnering with Rainbow Trail by supporting the ministry through their congregation's budget.

Abiding Hope Lutheran Church, Littleton	Evergreen Lutheran Church, Evergreen	Mount of the Holy Cross, Vail
Advent Lutheran Church, Olathe, KS	Faith Community Church Outreach, Longmont	Nativity Lutheran Church, Commerce City
Advent Lutheran Church, Westminster, CO	Faith Lutheran Church, Security Springs	New Promise Lutheran Church, St. George, UT
All Saints Lutheran Church, Austin, CO	First Lutheran Church, Colorado Springs	Our Father Lutheran Church, Centennial
All Saints Lutheran Church Miriam Circle, Austin, CO	First Lutheran Church, Longmont	Our Savior Lutheran Church, Greeley
Amazing Grace Lutheran Church, Littleton	Glory of God Lutheran Church, Wheat Ridge	Our Saviour's Lutheran Church, Ft. Collins
American Lutheran Church, Grand Junction	Good Shepherd Lutheran Church, Glenwood Springs	Our Saviour's Lutheran Church, East Bethel, MN
Ascension Lutheran Church, Colorado Springs	Good Shepherd Lutheran Church, Denver	Peace Lutheran Church, Las Cruces, NM
Ascension Lutheran Church Women, Colorado Springs	Grace Lutheran Church, Boulder Colorado Springs	Prince of Peace Lutheran Church, Colorado Springs
Atonement Lutheran Church, Boulder	Grace Lutheran Church Women of the ELCA, Colorado Springs	Prince of Peace Women of the ELCA, Colorado Springs
Atonement Lutheran Church, Lakewood	Grace Lutheran Church, Casper, WY	Prince of Peace Lutheran Church, Denver
Augustana Lutheran Church, Denver	Holy Cross Lutheran Church, Wheat Ridge	Rocky Mountain Synod Shepherd of the Hills Lutheran Church, Canon City
Bethany Lutheran Church, Cherry Hills Village	Holy Ghost Lutheran Church, Fredericksburg, TX	Shepherd of the Valley Lutheran Church, La Salle
Bethany Lutheran Church Foundation, Cherry Hills Village	Holy Love Lutheran Church, Aurora	Spirit of the Mountain Lutheran Church, Golden
Bethel Lutheran Church, Colorado Springs	Holy Shepherd Lutheran Church, Lakewood	South Zumbro Lutheran Church, Kasson, MN
Bethlehem Lutheran Church, Los Alamos	Holy Trinity Lutheran Church, Littleton	St. Andrew Lutheran Church, Arvada
Black Forest Lutheran Church, Colorado Springs	Holy Trinity Lutheran Church Women of the ELCA, Littleton	St. Luke Lutheran Church, Albuquerque
Centennial Lutheran Church, Englewood	Hope Lutheran Church, Westcliffe	St. Paul Lutheran Church, Albuquerque
Christ Evangelical Lutheran Church, Sante Fe, NM	King of Glory Lutheran Church, Arvada	St. Paul Lutheran Church, Calhan
Christ the King Lutheran Church, Denver	King of Kings Lutheran Church, Pueblo	St. Peter Lutheran Church, Greenwood Village
Christ the King Lutheran Church, Durango	Lord of the Hills Lutheran Church, Centennial	St. Philip Lutheran Church, Littleton
Christ the Savior, Aurora	Lord of the Mountains Lutheran Church, Dillon	Tabor Lutheran Church, Pueblo
Christ the Servant, Louisville	Lutheran Church of Hope, Broomfield	Trinity Evangelical Lutheran Church, Boulder
Community of Joy Lutheran Church, Rio Ranch, NM	Lutheran Church of the Holy Spirit, Centennial	Trinity Lutheran Church, Fowler
Cross of Christ Lutheran Church, Broomfield	Lutheran Church of the Master, Lakewood	Trinity Lutheran Church, Loveland
Cross of Glory Lutheran Church, Denver	Lutheran Church of the Servant, Santa Fe, NM	Trinity Lutheran Church, Monument
Cross of Hope Lutheran Church, Albuquerque, NM	Messiah Lutheran Church, Denver	Valley Lutheran Church, Denver
Elim Lutheran Church, Odgen, UT	Mission Lutheran Church, Swink	Zion Lutheran Church, Trinidad
Epiphany Lutheran Church, Denver	Mount Calvary Lutheran Church, Boulder	



## TRAILBLAZERS

The following individuals are members of the 2014 Trailblazers Club. Trailblazers is an annual giving club that keeps the ministry at Rainbow Trail alive and growing. To join, contact Dave 719-276-5233 or check out the "Donate" portion of our webpage at [www.rainbowtrail.org](http://www.rainbowtrail.org). Many thanks to the following supporters of Rainbow Trail!

<p><b>Eagle Peak Club</b> <b>\$500-\$999</b></p> <p>Anonymous Roger &amp; Alice Aden Mickey &amp; Cindy Bannister Scott &amp; Kristi Beebe Stacy &amp; Nicholas Branca Chuck &amp; Robbie Breaux Jim &amp; Cindy Britton Paul &amp; Suzanne Bunker Martha &amp; Clint Calvert Jeff &amp; Trisha Carlson Addi Choi Bill &amp; Charlotte Dausses Gudrun Emrich &amp; Aloke Guha Dana &amp; Charles Englebrecht Todd &amp; Natalie Erickson Vince &amp; Leigh Felletter Kevin &amp; Janet Flesch Dave &amp; Kim Guinn Paul Hadland Fred Hansen David &amp; Linda Higbea Koren Holden &amp; Randall Toney Michael &amp; Erinn Holliday Bill &amp; Shelly Hunter Tom &amp; Katherine Kaley Allison &amp; John Kane Charlie &amp; Linda Kelly Tim &amp; Amy Kessler JD &amp; Kristen Kessler Beth Knutson &amp; Steve Gustafson Mavis Kyllonen &amp; Karen Swanhorst Ben Larson Phyllis &amp; Randall Lynn Rob Maruyama &amp; Roz Kueter Don &amp; Bernie Mathison Tanda &amp; Thomas McCombe Jill &amp; Doug Monsen Delores &amp; Gerry Mueller Arthur Norman Richard Peasley &amp; Sonja Swanson Charlie &amp; Claire Pineda Clint &amp; Anne Pluenneke Calvin &amp; Cathy Pyle Jim &amp; Carol Reppert Willy &amp; Julie Reusser Rhonda Rhodes Patrick Shanahan Ben Spiger &amp; Kendra Wilde Laura Springhetti &amp; Siam Ootamasathien</p>	<p>Leslie Swetnam Edna Webster Mark &amp; Allison Whitmire Tom Williamsen</p> <p><b>Rainbow Lake Club</b> <b>\$250-\$499</b></p> <p>Cheryl Almquist Heather Armstrong Herbert &amp; Myra Bagenstos Dennis Bagenstos &amp; Judy Leiseth Gary &amp; Patty Bliss Larry &amp; Eleanor Bonicelli Lisa &amp; Matt Christian Rick &amp; Charlene Coulson Emily &amp; Scott Dalen Ina Kay &amp; Tom Devers Carl &amp; Katie Edstrom Paul &amp; Kathy Edstrom John &amp; Kathleen Erickson Mark &amp; Sarah Fincham Gloria &amp; Joel Friesenegger Ken &amp; Kay Gerhart Andrew &amp; Jennifer Gleason Laura &amp; Mike Growney Mark &amp; Vera Guebert- Steward Cordell Halverson Paul &amp; Elaine Hill Edson &amp; Mary Holland Fannie Hughes Steve &amp; Linda Jurens Craig Kelly Severt &amp; Mary Kvamme Gail &amp; Kay Luttinen Robin &amp; Michael McGlone Eric &amp; Lois Meyners Bob &amp; Andrea Mooney Gail &amp; Mark Muehlethaler Denise Nelsen Orla O'Callaghan &amp; Paul McCarthy Kim &amp; John Olson Jana &amp; Paul Oman Mo &amp; Marcia Oppermann Roger &amp; Mary Riekema Kevin &amp; Darlene Rohrbaugh Becca Sager Rod &amp; Sharie Schofield Max &amp; Linda Stefoin Bob &amp; Janelle Stover Linda Stuehrenberg Bob &amp; Jean Terry Ron &amp; Marci Tribelhorn Wayne &amp; Joan White</p>	<p>Lester &amp; Marianne Woodward Gene &amp; Cheri Zeller</p> <p><b>Base Camp</b> <b>\$120-\$249</b></p> <p>Margaret &amp; Norm Aarestad Edna Anderson Marlys Bernhard Paul &amp; Kari Blanchard Liza &amp; Nathan Blom Martin &amp; Nancy Brown Jack &amp; Phyllis Brown Jerry &amp; Joan Brown Joel &amp; Carolyn Buck- Gengler Mardella Buhr Gary &amp; Karen Cook Sharon Cox Lynda Cox Mark &amp; Pegi Crates Beth Davis Trudy Diershow Russ &amp; Pat Edwards Kim Eggen Emily Ewing Mark &amp; Carla Ewing Barbara &amp; Chuck Exley Scott &amp; Sue Fernau Don &amp; Ginny Fisher Ron &amp; Heather Frost Eric &amp; Pam Gohl Steve &amp; Lewanne Graeber Brittany Grider Steven &amp; Pamela Haigh Donna Hayden Scott &amp; Susan Harman Ray &amp; Carrie Harney Nancy Henning James &amp; Candy Hersch John &amp; Valerie Hess Mike &amp; Monte Hess Paul &amp; Lynne Horpedahl Jeffrey Jackson &amp; Connie Roe Stanley &amp; Evelyn John Stan &amp; Sandy Johnson Charles &amp; Gertraud Jones Jack &amp; Dona Kenline Sandy &amp; Van Kistler Don &amp; Mary Koppenhaver Art Kraus &amp; Michelle Stone Kraus David Kumpe &amp; Rosemarie Wipfelder Kumpe Jean Larson Kristin &amp; Mike Lavelle Kim Law David Lindholm &amp; Kathy Sasak-Lindholm Robert Loftfield</p>	<p>David &amp; Michelle Louis Marilyn &amp; Ing Maurstad Walt &amp; Karyl Meyer Andrew &amp; Adrian Miller Julie &amp; Scott Miller David Miller &amp; Anne Wenzel Zach Miller Joyce Mills Patti Nelson Sigurd &amp; Dianne Nelson Caitlin &amp; Josh Nelson Richard &amp; Penny Newman Thom &amp; Susan Okoneski Eric &amp; Christina Ostovic Candy &amp; Larry Ourada Jim &amp; Delia Ozburn Jessica &amp; Josh Pearson Dave &amp; Judy Peters Susan Pfabe-Wiggans &amp; Scott Wiggans Terry &amp; Susan Pletkovich Alissa &amp; Josh Plumley Suzanne &amp; Craig Preuss David &amp; Raynee Price Clara Remele Christine Roby Tiff &amp; Kevin Roiseland Eldene Ronnekamp Allen Schauer Cheryl &amp; Kevin Schenk Gary Schoon Carl &amp; Gail Schurman Brad &amp; Brooke Shannon Jim &amp; Bonnie Shumaker Cliff &amp; Teak Simonton Don Simonton Kevin &amp; Sarah Smith Paul &amp; Lisa Smith Jim &amp; Pat Speckmann Wayne &amp; Kathryn Spight David Stark Frank &amp; Ange-La Sutherland Amy Sutula Marion Talley Roger Thompson Scott Treider &amp; Carol Serrano-Treider Amber &amp; Joe Turner Clarence &amp; Marlyn Ver Sluys Dena Wangerin-Richter Mark Ward Greg &amp; Deb Watson Roberta Wentworth Keith &amp; Tammy Wetter Vicki &amp; Donald White Laura &amp; Alex Wouters Terry &amp; Holly Wubbena Gene &amp; Angie Youngmann Harry Zander</p>
---	--	--	---

### ROPES COURSE FUND

<p>Augustana Foundation, Denver Craig &amp; Gail Bagenstos Bethany Lutheran Church Foundation, Cherry Hills Tom &amp; Dana Braun Mike &amp; Connie Burris Bill &amp; Charlotte Dausses Andrea Doerr Fred &amp; Janice Ehlers Vince &amp; Leigh Felletter Todd &amp; Jill Grivetti Paul Hadland The Estate of Pauline Hammond Dan Hanson John &amp; Valerie Hess John &amp; Jenny Hierlinger Nicole Hoffmann-Ewing Wesley &amp; Amy Hout Dave &amp; Nellie Jarvis The Estate of Maxine Johnson Kiara &amp; Andrew Jorgenson Allison &amp; John Kane Art Kraus &amp; Michelle Stone Kraus</p>	<p>David &amp; Michelle Louis Lutheran Community Foundation Cheryl &amp; Stephen Mahon Jeanne &amp; Tim Maloney Laurie &amp; Clayton Mohler Johanna Nichols Dave &amp; Michelle Okes Sara &amp; Clark Olson-Smith Mo &amp; Marcia Oppermann Dave &amp; Judy Peters Erin Pineda &amp; Ryan Ourada Matt &amp; Wendi Rusch Sonja &amp; Gordon Sandquist Brahm &amp; Sarah Semmler Smith Sarah Shasberger Michelle &amp; Jeff Simmons Richard &amp; Elaine Simonds Rick Smith Jim &amp; Pat Speckman Katherine Tjeerdsma Amber &amp; Joe Turner Brian &amp; Kira Ward Bob &amp; Joyce Witte</p>
---	---

### EAGLE PEAK PROJECT

<p>Addi Choi Jesse &amp; Lindsay Crock Greg Dew Ben Larson</p>	<p>Martina Link Carl &amp; Emily Sauey</p>
--	--

## Ben There...

By Ben Larson - Director of Compass Points & Day Camp

I hiked my first two 14ers of the year the day before Easter. The weather was pretty typical for a nice spring day in Colorado. Sunny and warm one minute, snowing and windy the next, then cloudy and calm, driving rain, and even a little lightning just to spice things up! After slogging through snow, up the road for three miles to the summer trailhead, we strapped on snowshoes for the trip across the valley floor. There was great excitement, three hours later, as we "started" the ascent, with the peak in view. As we climbed, clouds and snow began to obscure the view, the switchbacks seemed to get longer and steeper with every turn, we wondered if we would ever get to the top. Then I started seeing signs that the end was near...



There are projects at camp that have seemed like 14ers lately, great excitement as we began, then lots of slogging and wondering if we'll ever get finished. After lots of work and time, I'm seeing signs that the end is almost here, and that these projects will be a reality for the upcoming summer! New canvas wall tents are sitting in the Pack Shack waiting to be set up this spring. Permits and plans are in place for an awesome new deck to be built between Eagle Peak Lodge and the Pack Shack this Memorial Day Work Weekend. These two improvements will create great new space for the biggest summer of Compass Points we've ever had. And, after many delays, a construction crew is onsite building our new ropes course! It's been amazing to finally see steel and cables go up, and it will be an awesome new tool to have for our summer and retreat programs.

We did make it to the top of Gray's Peak, and could see a path leading on. Torrey's Peak came into view as the clouds thinned and that got climbed as well! With a clear sky we could see countless other mountains to climb as well, I hope to hike twenty of the 14ers this year. Each one will have it's own challenges and adventures. It is the same with camp, as we finish projects we'll look forward to other ways we can continue to grow this ministry. I hope you'll come and be part of some of them with us!

*Ben ...Done That*

## ORGANIZATIONAL GIFTS

- Adams County Chapter Thrivent Financial for Lutherans
- AIG Matching Grants Program
- California Pizza Kitchen
- Collegiate Peaks Chapter Thrivent Financial for Lutherans
- Community First Foundation
- Denver County Chapter Thrivent Financial for Lutherans
- Douglas County Chapter Thrivent Financial for Lutherans
- Fremont-Custer County Thrivent Financial for Lutherans
- Garden of the Gods Chapter Thrivent Financial for Lutherans
- Gateway Thrivent Financial for Lutherans
- Mesa County Chapter Thrivent Financial for Lutherans
- Metro Plains Chapter Thrivent Financial for Lutherans
- North Jeffco Chapter Thrivent Financial for Lutheran
- Pikes Peak Chapter Thrivent Financial for Lutherans
- Regional Thrivent Financial for Lutherans
- Sangre de Cristo Thrivent Financial for Lutherans
- Southeast Metro Thrivent Financial for Lutherans
- South Jeffco Thrivent Financial for Lutherans
- Twin Peaks Chapter Thrivent Financial for Lutherans
- Verizon Foundation

## LEELAND AND ELLEN SOKER ANNUAL CAMPERSHIP FUND

<p>Bethany Lutheran Church Foundation, Cherry Hills Steve &amp; Peggy Krenz Bert &amp; Dolly Lager Lutheran Men of Greater Denver Kate &amp; Ashley Quintana Andrew &amp; Annette Roinestad Wanda &amp; Steven Stacy</p>	<p>Garrett &amp; Stacey Struessel St. John's Lutheran Church Thrivent Financial Douglas County Chapter Thrivent Financial Garden of the Gods Chapter Thrivent Financial South Jeffco Chapter Kate &amp; Eric Waggoner</p>
--	---

## ANN (JARVIS) SMITH MEMORIAL LAND EXCHANGE FUND

<p>Rebecca Albright &amp; Philip Tedeschi Augustana Lutheran Church, Denver Rick &amp; Gayle Bebee Jerry Berg Bethlehem Lutheran Church, Longmont Martin &amp; Nancy Brown Jeff &amp; Trisha Carlson Jean &amp; Larry Danielson Evergreen Lutheran Church, Evergreen Dennis &amp; Lynn Gimlin Dale &amp; Thelma Hahn Fred Hansen Kim &amp; Mike Hedstrom King of Kings Lutheran Church, Pueblo Roger Kleen</p>	<p>Andy &amp; Twana Klinkerman Linda Leners Lord of the Hills Lutheran Church, Centennial The Carol Ann Campbell Fund Lutheran Community Foundation Don &amp; Bernie Mathison Robert &amp; Judi Newman Mo &amp; Marcia Oppermann Paul &amp; Lisa Smith Rick Smith St. Paul Lutheran Church, Calhan Steven Westcott &amp; Debbie Agar Keith &amp; Tammy Wetter</p>
--	---





**Rainbow Trail**  
LUTHERAN CAMP

**2014 - 2015 Events Calendar**

- May 23-26.....Memorial Day Work Weekend
- June 8- August 16.....Summer Camps
- August 29 - September 1.....Labor Day Family Retreat
- September 11 - 14.....Men's Fly Fishing Retreat
- October 4.....Grace Race 5k (Denver)
- October 10-12.....Fall Ambassadors Retreat
- November 7-9.....Fall Confirmation Retreat
- December 5-7.....AdventFest
- March 16-18, 2014.....Youth Directors' Retreat

**CONTRIBUTORS**

Thank you to the following friends of Rainbow Trail who gave a gift in 2014

- |  |                               |                                    |   |
|--|-------------------------------|------------------------------------|---|
| Kevin Althoff & Sandy Wittebort          | Richard & Carie Hagen         | Kurt & Darlene Mader               | Carl & Emily Sauey                      |
| Wayne & Ellie Arden                      | Daniel Hanson                 | Jennifer & Tom Marcotte            | Dawn & Gene Scherr                      |
| John & Gloria Arestad                    | Landon Harman                 | Robert Marold                      | Patti Schoenfeld                        |
| BettyAnn Arner                           | Dave & Carol Hartenberger     | Judy Marsh                         | Joseph & Linda Schrollor                |
| Kayla Aspeslagh                          | June Hartmann & Allan Ochs    | Sarah Massie                       | Roger & Margaret Schutte                |
| Deb & Dan Austin                         | Jim & Barb Hauck              | Amy Maybon                         | Paula Seeland                           |
| John & Gail Bartels                      | Jeff & Annie Heath            | Ruth McCall                        | Robert & Virginia Sellberg              |
| Ruth & Mike Bash                         | Karel & Tom Hemler            | Timothy & Lucia McClure            | Kathryn & Chris Sheffer                 |
| Dale & Edee Bauer                        | Mark & Nancy Hendrickson      | Ruth & Gerald McDonnel             | Christy Shelinbarger                    |
| Marty Bendel Waite                       | James & Deena Hilbert         | Susan McKinley                     | Barbara Sieckman                        |
| Vivian Bengtson                          | Lynne & Bob Hobbs             | Derek & Christina Menke            | Joel & Barbara Sigdestad                |
| Karen Benuska                            | Nicole Hoffmann-Ewing         | Ross & Stacie Merritt              | Michelle & Jeff Simmons                 |
| Nathan Bergmann                          | Kathy & Dirk Hogue            | Heather Miller                     | Kandisa Skaff                           |
| Walter & Kathleen Blair                  | Kim & Jay Hohensee            | Gary & Gwynethe Miller             | Harold & Nancy Skinner                  |
| Rhonda & Eric Bostrom                    | Del & Cheryl Holz             | Jim & Karla Miller                 | Mark Skinner & Lou Ann Cheslock-Skinner |
| Donna & Stephen Bools                    | Victor & Lois Hoops           | Brittany Mohler                    | Donna Skovgaard                         |
| Daniel & Diana Breed                     | Karen Horgen                  | Scott Moore                        | Robert Slagle                           |
| Pauline Brodbeck                         | Kevin Howard                  | Randy & Gail Mundt                 | Gerald Smith                            |
| Richard & Bonnie Brundige                | Nancy Howard                  | Mark & April Munson                | Stan & Sarah Smith                      |
| Kip & Pam Bryan                          | Kenneth Hudson                | Paula Nelson-Marten                | Austen Smith                            |
| Daniel Burris                            | Joan & Chris Huke             | Jennifer Newman & David Engel      | Jessica Smoot Edwards & Luke Edwards    |
| Doug & Michelle Cahill                   | Sarah Hulslander              | Engel                              | Larry & Elaine Sohrweid                 |
| Jeanell Carlson-Bjorkman                 | Ruth Idler                    | Johanna Nichols                    | Ken & Mary Sorenson                     |
| Roger & Linda Coffey                     | Denise Ikenberry              | Brian Niess & Anne Bliss           | Bob & Dorthea Steinke                   |
| Lisa & Craig Coney                       | George & Nancy Jacobson       | Niess                              | Robert & Rhoda Stenson                  |
| Dennis & Judy Conroy                     | Shelly & Chris Jarnot         | Ann & Merlin Nimrod                | Kristin & Christian Nisonger            |
| Terri & mark Cooper                      | Ben Jarvis                    | Kristin & Christian Nisonger       | Ed & Nancy Norden                       |
| Virginia & Tom Crow                      | Kitty Jarvis                  | Ed & Nancy Norden                  | Bert Nuckols                            |
| Natalie & Shawn Dailey                   | Cliff & Carol Johnson         | Ed & Nancy Norden                  | Charles & Catherine Olin                |
| Linda & Stephen Daniel                   | Dennis Johnson                | Paul Olsen                         | Paul Olsen                              |
| Diedra & Dale Duagherty                  | Marc & Marcia Johnson         | Orvid & Lois Olson                 | Catherine Oneill Thorn                  |
| Roger & Debra DeYoung                    | Ron Johnson                   | Elise & James Osmera               | Christine Packeco                       |
| Jack & Kat Dechant                       | LaDonna Jurgensen             | Christine Packeco                  | Vicki & Stacy Padilla                   |
| Avis & Dorothy Dempsey                   | Jim & Carol Kaliamos          | Vicki & Stacy Padilla              | Andrea Patella                          |
| Maren Diercks & Paul Eppard              | Conrad & Kathy Kawulok        | Andrea Patella                     | Anne-Marie Patrie & John Schneider      |
| Phyllis & Stan Dorris                    | Keith & Becky Kempke          | Anne-Marie Patrie & John Schneider | Mary & Steven Peck                      |
| Lori & Steve Dudley                      | Susan Knight                  | Mary & Steven Peck                 | Ruth Peterson                           |
| Joanne & Jim Dumler                      | Kelly Knupp & David Fox       | Ruth Peterson                      | Lynne & Phil Pickett                    |
| Frances Dunbar                           | John & Kristi Kohnke          | Lynne & Phil Pickett               | Paul & Donna Picou                      |
| Kendra & Steve Dunn                      | Krista Kuhl                   | Paul & Donna Picou                 | Harriet Porch                           |
| Bill & Nancy Eldridge                    | Bert & Dolly Lager            | Harriet Porch                      | William Powell                          |
| William Ernstrom & Janie Hanson-Ernstrom | Heather Land                  | William Powell                     | Jon & Jo Powers                         |
| Richard & Janna Flanders                 | Stan & Kathy Larson           | Jon & Jo Powers                    | Jerry & Lorna Reeves                    |
| John & April Flanigan                    | Susan Larson                  | Jerry & Lorna Reeves               | Mark & Michele Robinson                 |
| Kerry & James Forbes                     | Mark & Susan Lathrop          | Mark & Michele Robinson            | Rick & Becky Romano                     |
| Thomas & Mary-Lynn Foreman               | Gregory & Gladeane Lefferdink | Rick & Becky Romano                | David & Susan Ross                      |
| Art & Lori Gaide                         | Leatheron                     | David & Susan Ross                 | Ben Rude                                |
| Mark & Nancy Galloway                    | Lisa Lewis                    | Ben Rude                           | Kristen & Michael Saathoff              |
| Karan Goldsberry                         | Jim & Laura Lewis             | Kristen & Michael Saathoff         | Stephanie Salazar                       |
| Rosa Graham                              | Theresa & Dan Lubben          | Stephanie Salazar                  | Dawn & Jerry Sandoval                   |
| Megan Gress                              | Carol & Dan Ludwig            | Dawn & Jerry Sandoval              | Kent & Barbara Sather                   |
| Dave & Nicky Gunnlaugsson                | Waverly Machamer              | Kent & Barbara Sather              | Wayne & Nancy Sather                    |
|  | Matt & Michelle Mackeprang    | Wayne & Nancy Sather               |   |

**GIFTS IN KIND**

- |   |                          |
|---|--------------------------|
| Ascension Lutheran Church, Colorado Springs   | Charlie & Linda Kelly    |
| Linda & David Asselin                         | Kim & Jeff Kelty         |
| Bethany Lutheran Church, Cherry Hills Village | Carol Larson             |
| Diane Boldt & Paul Hurcomb                    | Cheryl & Stephen Mahon   |
| Jeff & Trisha Carlson                         | Ed & Eunice Mansfield    |
| Kris & Tim Carr                               | John & Pam Marietta      |
| Karla & Dan Clader                            | Brent & Dawn Meyer       |
| Bob & Margie Dugan                            | Jill & Doug Monsen       |
| Lindsey Eby                                   | Charles & Catherine Olin |
| Fred & Janice Ehlers                          | Brett & Jennifer Palmer  |
| Gerald Engleman                               | Mark & Heidi Peterson    |
| Dave & Ruth Ericson                           | Rhonda Rhodes            |
| Vince & Leigh Felletter                       | Keith & Deanna Rosenthal |
| Douglas & Debra Fincham                       | Cheryl & Kevin Schenk    |
| Chris Hadland                                 | Randy & Lisa Schrader    |
| Paul Hadland                                  | Peg & Dave Slagle        |
| Steve & Linda Jurrens                         | Robert & Susan Wedel     |
|   | Bob & Joyce Witte        |
|   | Bob & Aurice Worley      |

We make every effort to list each donor, but mistakes do happen. If we have inadvertently omitted your name or listed you incorrectly we apologize. Please call us, 719-276-5233, and let us know so that we can make corrections.

**Gifts In Kind**

A different, yet significant way to support RTLC's ministry.

It takes a lot of "stuff" to make camp happen. Some "stuff" is small and ordinary and is on our "Needs List" below. These are essential items needed for our day-to-day operations. Our "Wish List" has bigger items that would enhance the ministry we do, but we haven't been able to budget money to purchase. We know that there are lots of ways to give to this ministry. If



you would like to give a gift from one of these list you can bring new, or gently used items to camp. Contact us to arrange a time to pick them up, make a designated monetary gift to RTLC, or shop online and have them delivered. Additional



**Needs List**

- White 20# copy Paper (Laser quality)
- Reams of colored copy paper
- Avery 5160 labels
- Avery 5164 labels
- Masking tape
- Adobe Creative Suite 6 (Mac)
- Sharpie brand permanent markers
- Scotch tape
- Duct tape
- Postage stamps
- UPS Surge Protector Power strips
- Packs Medium black pens
- Long barreled fire lighters
- 9x12 Manila envelopes (no clasps)
- 6x9 Manila Envelopes (no clasps)
- Boxes of 1/3 cut file folders
- 12 - 5 ft. round white Lifetime tables
- 6 or 8 ft. rectangular white Lifetime tables
- Extension cords (all lengths)
- 10 gallon Rubbermaid tubs for the kitchen
- Adult size scissors
- Paper clips
- A "new" economic car for Day Camp
- Extension cords (all lengths)

**Wish List**

- Industrial Mop buckets (call us first!)
- Sturdy wheelbarrows
- Jump drives/thumb drives
- New Mac laptop computers
- New full sheets - white
- New full or single mattress pads
- New Queen sheets - white
- New Queen mattress pads
- 20 new 3-piece towel sets
- Costumes for life of Christ
- 3 - 5 gallon shop vacuums
- 3 - upright vacuums
- 3 new high chairs
- 2- 32" Digital Flat Screen TVs
- Gator 6 wheeled vehicle
- 20 ft. or longer extension cords
- 2 - New gas grills
- Bobcat Pallet forks & toothed bucket
- Airless Paint Sprayer
- "Flat proof" foam filled Bobcat Tires
- "New" Quality Socket/Wrench Set

**Shop Online**

It's easy to give a gift from RTLC's Needs or Wish Lists online. We've pre-selected items that we are looking for and provided links straight to great deals that we've found. You can order on-line and have items shipped directly to us.

[www.rainbowtrail.org/donate/needs-and-wish-list](http://www.rainbowtrail.org/donate/needs-and-wish-list)

**Thank You For Your Support of RTLC's Ministry**

**Administrative Office**

107 S. 9th Street, Suite B  
Canon City, CO 81212  
Phone: 719-276-5233  
Fax: 719-276-5235  
Office Hours: 9 am - 5 pm



**Camp Office**

P.O. Box T  
3056 County Road 198  
Hillside, CO 81232  
Phone: 719-942-4220  
Fax: 719-942-4000

**Full-Time Staff**

- Dave Jarvis, Executive Director.....dave@rainbowtrail.org
- Sara Marietta, Executive Secretary.....info@rainbowtrail.org
- Aurice Worley, Bookkeeper.....accounting@rainbowtrail.org
- Ben Larson, Dir of Compass Points & Day Camp.....ben@rainbowtrail.org
- Ben Jarvis, Dir of On-Site & Bridging Borders..ben.jarvis@rainbowtrail.org
- Kyle Larson, Dir of Site & Facilities.....kyle@rainbowtrail.org
- Chris Seaman, Food Service Manager.....chris@rainbowtrail.org
- Krista Monson, Program Assistant.....krista@rainbowtrail.org
- Jen Pulscher, Program Assistant.....jen@rainbowtrail.org

**Board of Directors**

- President.....Michelle Okes, Bethany Lutheran, Denver, CO
- Vice Pres..... Rev. Vera Guebert-Steward, Evergreen Lutheran, Evergreen, CO
- Secretary.....Scott Skrine, King of Glory Lutheran, Arvada, CO
- Treasurer.....Kathy Twaddell, Atonement Lutheran, Boulder, CO
- .....Russ Britton, Bethany Lutheran, Denver, CO
- .....Kevin Flesch, Augustana Lutheran, Denver, CO
- .....Chris Lieber, First Lutheran, Colorado Springs, CO
- .....Josh Nelson, Holy Trinity, Littleton, CO
- .....Becca Sager, Trinity Lutheran, Boulder, CO

[www.rainbowtrail.org](http://www.rainbowtrail.org)