



Rainbow Reflections

BULK RATE
U.S. POSTAGE
PAID
CANON CITY, CO
PERMIT #30

Lutheran Outdoor Ministries of the Rockies
Rainbow Trail Lutheran Camp
107 South Ninth Street, Suite B
Canon City, Colorado 81212

Volume 24, Number 2 Spring 2012

Rainbow Trail is operated and maintained under authority of a USDA Forest Service Special Use Permit. Rainbow Trail is located in the San Isabel National Forest, USDA.

Address Service Requested

The Winds Are Changing

Replacing The High Ropes Course

Since 1996, the High Ropes course has challenged campers in lots of ways and has been an important part of the program at Rainbow Trail. In a major wind storm this past November, trees all over camp were uprooted, snapped in half, and toppled over. The ropes course caught the brunt of the damage, and all but one element of the ropes course was destroyed.

Because the course was built in trees, there weren't a lot of possibilities for repairing it, so new options had to be considered. A lot has changed in ropes course



technology in the past fifteen years and we are very excited about the possibilities that a new course design could mean to our program. This artist's rendering of a multi-

person challenge course gives a glimpse of what campers might find as they take on the challenges of a new course in small groups of two to four people. While it

won't be ready for this year, we're hopeful that construction can begin this year.

Building a new course will be a big investment in the ministry of RTALC and we are pursuing a number of grants to cover the costs of building the course. The cost of the new course will be in the neighborhood of around \$100,000. If you are interested in contributing to this project please email Dave@rainbowtrail.org. If you would like to provide a challenge gift, please call Dave at the Canon City office.

Tremendous Memorial Day Support From Thrivent

Memorial Day Work Weekend is probably the one event that best epitomizes the culture of Rainbow Trail. Annually, over 100 people give up their holiday weekend to improve our site and make RTALC shine. This is the weekend that we not only shake the dust off all the parts of camp that have been carefully put away for the winter, but it has grown to be a weekend when major changes happen to camp every year. This year is no exception.

The big plans for this year include a new log railing on the deck of Bristlecone, refurbishing the interior of Buttercup, repairing five cabin roofs damaged in the windstorm, building new shelving in the pavilion, repairing the "IAM", doing trail work on



the trail to Three Crosses, spreading new gravel on the roads, installing new trex on the wheel ramp and stairs on Bristlecone deck, painting at least one building, and upgrading the archery area.

All of this would not be possible without the help of many chapters of Thrivent Financial for Lutherans. Through their Care Abounds in Communities Program, Thrivent chapters provide funds that help cover many of

our materials expenses for the weekend. That, combined with expert leadership from several contractors who are willing to give up their Memorial Day weekend to lead these projects, means that we get professional construction at a fraction of the cost. The chapters involved this year include Metro Plains, Denver County, Douglas County, Fremont/Custer, North Jeffco, Pikes Peak, South Jeffco, and Mesa County. We figure that Nick, our director of site and facilities, gets the equivalent of a full-time assistant with the hours that are put in during this weekend.

Also, this year, the Thrivent regional office, led by Ralph Yernberg and Paul Olson, is providing funds to help us finish the wheel chair ramp, the stairs, and part of the new log railing for the Bristlecone Lodge deck.

The work weekend will be

held May 25-28, 2012. There may still be a few cabins available. Bring your family or, better yet, bring a group from your church and fill the cabin. There is something for EVERYONE to do. Email Dave at dave@rainbowtrail.org or call him at 719-276-5233 to make your reservation. Thanks to all who make our site a fabulous place to

Inside this issue...

Trail Boss.....	p.2
Men's Fly Fishing Retreat.....	p. 2
California Pizza Kitchen.....	p.2
Fresh Ehr.....	p.3
Thank you PGAs.....	p.3
Why I Give.....	p.3
Meet the 2012 Summer Staff...p.4-5	
pASHionate.....	p. 6
Ben There, Done That.....	p.7
Wish/Needs List.....	p.8

Rainbow Trail Mission Statement

Through the ministries of Rainbow Trail Lutheran Camp, God claims us, Christ transforms us, and the Holy Spirit sends us for faithful service.

Trail Boss

By Dave Jarvis - Executive Director

It has been quite the year for this ministry. Fire, wind, and even financial challenges have reshaped our world. And what's next? I feel that this ministry is on the cusp of a whole new era, much like the phoenix that rises out of the ashes. The challenges of 2011 have only made us stronger and more grounded in our philosophy. I think we are actually better equipped to serve this summer!

Registrations are very strong for summer and most weeks are full or very close to full. But there is still time to register for camp! If you haven't registered yet, do it today. It is easy and can all be done online. Double check when your school starts for the fall. Lots of schools don't start until after camp is over and there is still a lot of room in that last week of camp. Don't miss out on the chance to be at camp with our great staff.

If money is an issue, email me and let's talk. Don't let finances be the reason for not coming to camp. We have camperships available for that purpose. There are no forms to fill out, and you don't need to share any private information. Take advantage of this opportunity to help your child have the best week of their summer at Rainbow Trail!

As most of you know, we lost our ropes course in the windstorm from last November. With all that has happened in the past year, it would be easy to be downtrodden or even feeling a little sorry for ourselves. But this full-time staff that I am blessed to work with is amazing. They have all viewed this as a great opportunity to do something very new and different. The new ropes course design we are looking at allows as many as four campers to be on an element at the same time. This fits our philosophy even better than the old course. We are excited about this! But we have also realized that we'll get only one shot to redo our course. So we want to do it right and want to take the time to do it right. We probably will not have the high ropes course as kids have known it this summer. But we want to be sure this is a great design and that we can raise the money to rebuild it. Talk to me if you want to invest in this part of our ministry in a significant way!

Our staff will soon be here for the summer! Our Directors arrive on Monday, May 21st and the rest of our ministry team arrives on Memorial Day. We are so excited about this team and all they will have to offer our campers. Please keep them in your prayers as they prepare for this summer. May God use them in amazing ways this summer!!

We continue to need your support for this ministry through prayer, through your sweat, and through your financial gifts. This weekend we have a crew of 44 people clearing away trees from the ropes course so the area will be safe for campers this summer. The response to our two special work weekends has been amazing. And now more than ever, we need EVERYONE to help financially support this ministry. The economy has not recovered and people are still looking for jobs. Not surprisingly, our requests for camperships continue to grow. But we have stuck to our philosophy that money will never be a reason a child can't come to camp. We will find a way to make it all work – somehow. So gifts of all sizes, large and small, make this ministry run. If everyone will do something to financially support RTL, it will make an enormous difference. And the return on this investment will be enormous – that is a promise!!!!

Ash and I just got back from our exploratory and final prep trip for our Bridging Borders trips to Joplin, Missouri. We were overwhelmed by the story of that town and the resilience of its people. These are going to be phenomenal trips for the groups that are going there this summer. I want to go back in the fall with an adult group. Talk to me about organizing a trip for your congregation! The Joplin trips will be every bit as powerful as the Ecuador, Mexico, and Galveston trips have been. We



A Successful California Pizza Kitchen

Fundraiser



A huge thank you to everyone that participated in the California Pizza Kitchen fundraiser this past February. Spanned over 9 California Pizza Kitchen locations we raised \$2,400. As an added bonus Thrivent Financial for Lutherans matched \$1 for every \$3 dollars

raised. The grand total raised was \$3,200. Thank you for your incredible support, we definitely felt the love! We are planning on keeping this fundraiser in the future. Keep your eyes and ears out for dates and locations! We are very blessed to have such great supporters!

you are on one of these trips, your work is significant but you are only a small piece of the puzzle. While we were there, we joined a group working to restore some normalcy and community spirit by repairing damage to the Little League field and buildings. It helped me keep perspective that the work we do serves not only individuals, but can also help to unite entire communities by giving them back something they had lost. Countless projects await us in Joplin--I'm excited for RTL to make an impact there. It is out of these experiences that I realize that I do have the best job in the world. God uses my gifts to serve literally thousands of people every summer. I work with incredible people that keep me young and challenge me to stay that way. And the ministry I am a part of is supported by the greatest group of people anywhere. It gets no better! Thanks for the blessing of serving you another summer. See you at camp this summer!!

Until next time...

Dave

Designate your Thrivent Choice Dollars to RTL and Help Great Ministry Happen!

Thrivent Financial for Lutherans has a new charitable giving program called **Thrivent Choice**. They are no longer matching gifts of any kind. Instead, each member is allocated a set amount of money to give to the Lutheran organizations of their choice. Last year, Rainbow Trail received \$33,000 from this program. Our goal for 2012 is \$50,000. We hope that you will designate your allocated dollars to **Rainbow Trail Lutheran Camp**. With the recent cuts in our synod support, your designation for Rainbow Trail with your Thrivent choice dollars can make a world of difference. If you haven't designated your dollars to any organization, just follow the steps below to designate them to Rainbow Trail.

Here are step by step instructions on how to designate your funds.

1. Log on to www.thrivent.com
2. Sign in with your username and password or register for an account.
3. Once you have registered and signed in, select the "Direct Choice Dollars" button for Thrivent Choice in the right hand side.
4. In the middle of the next page, type in "Rainbow Trail Lutheran Camp." in the "Organization Name" box, leave "City" blank, and click search.
5. Next to our camp name, you will click the "Direct Now" button. You will be able to assign all or part of your choice dollars to us. You can also set it up so Rainbow Trail continues to get your future Thrivent Choice Dollars as well.
6. Click the "submit" button and your Thrivent Choice Dollars will be sent to our ministry.

This is just one more way that you can give to support this ministry. Encourage your friends to that are Thrivent members to do the same! If you have any questions, call Dave at the Canon City office.

New Fall Dates

Don't Miss The

Men's Fly Fishing Retreat

September 13-16, 2012

Take some time to step out of the stresses of ordinary life and into the refreshing waters of the Arkansas River. This weekend of fly fishing, hanging out with the guys, and amazing worship and conversation is led by Pastor Dave Risendal. His deep love of fly fishing and the gospel will help you re-center and deepen your faith. Expand your fly fishing skills with instruction from Greg Felt, owner of Ark Anglers Fly Shop, fly tying workshops, and advice from other seasoned fishermen. Whether you are an experienced angler or just want to try fly fishing, this is a weekend you won't want to miss! The \$195 program fee includes meals and lodging. Don't have gear? No problem, we can connect you with rental equipment at a great price. We can also make arrangements to hire guided fly trips through Ark Anglers if desired. To get more information, contact Ben, 719-431-0050 or ben@rainbowtrail.org.



Get More Information and Register Online
www.rainbowtrail.org/retreats/mens-retreats

Memorial Blue Spruce Tree

It was a tree that not many people probably even noticed, but it was significant in the rich history of Rainbow Trail. This was the Blue Spruce that stood majestically right next to the northwest corner of Aspen Hall. This tree was planted in memory of Leslie Ann Leger who died in 1962 due to an accident when she fell on a broken chair. She is the only camper to ever have died on our site. In the windstorm this past November, the Blue Spruce was uprooted and fell across the road. The trunk from that tree has been saved to make a memorial bench. But we would like to plant a new Blue Spruce in the same spot. Trees cost about \$40 a linear foot. We would like to plant as large a tree as we possibly can, but at least ten feet high. We have set a goal of \$500 for this project and we have already raised \$150 thanks to the members of Augustana Lutheran in Denver. If you would like to contribute to the new memorial Blue Spruce tree, send your check to the Canon City office, marked with "Memorial Tree" on the memo. Help us restore a little bit of history back on our site.

Fresh Ehr

By Nick Ehrhardt - Director of Site and Facilities

With spring at Rainbow Trail comes bright sunshine, melting snow, sticky mud, greening grass, and a lot of things to do before summer sneaks up on us. It has been a busy spring so far and with a few work weekends behind us and a few more to come, we'll be on top of our lists in no time! I want to shout out a tremendous thank you to everyone who has made it out to camp in the past months to help us get on top of the debris piles from the past year's calamities. The joyful volunteer response has been delightfully inspiring!



My routine for the past few springs has been to start wrapping my head around the coming summer's Bible study by writing some new music for us all to sing. It has been fun for me to see that a few of my modest attempts have made it into the camp favorite pile. For any of you who made it up to camp last summer, you probably sang "Little Room" a time or two.

As far as songwriting goes for this spring, I'm feeling a bit stumped. There are certainly plenty of meaningful directions that I could go in pondering the summer's theme, "It's All About Grace." But my biggest problem so far is that I can't help but feel that the song, "Little Room," which I wrote for last year's theme, pretty much says it all as far as what it means to be "All About Grace." Let me explain...

For those of you who aren't familiar with the song "Little Room," here's a brief excerpt from the lyrics: "When the lightning's laughing/ And the thunder claps are crashing/ Remind me that you're asking, for me to go inside of/ My little room/ where I can pray/ and trust that God will find a way to/ even on the darkest night/ fill the sky with little sparks of light."

I have gotten a lot of positive feedback on the song. However, several people have challenged me saying that, though they appreciate the theme of resting in prayer when things get hectic, there should be a final verse along the lines of "God is asking us to go outside of our little rooms, into the world, in service, not retreat away from the world." I completely agree, but this is where the theme, "It's All About Grace," comes into the picture for me.

Speaking at least for myself, especially when things get hectic, I am all the less likely to first trust in the promise of Grace, and subsequently act from that foundation. My course of action quickly becomes, "I'll lean on my own expertise and my own hard work, and if there is time, I'll turn to God and give a quick nod to Grace." But scripture's instructions to us are completely the opposite: "In all circumstances, pray without ceasing." Rest first in God's Grace, and from that foundational perspective, move outward into the world allowing God to work through us. I would bet that most of us think we heed such instructions, but I invite us to seriously consider our tendencies, especially when plans unravel, to forget about Grace. Our "Little Room" represents, not a turn away from the world, but a reminder to, in all circumstances, turn first to the deep promise of Grace, a promise that is always in and around us.

My challenge to myself this spring, as I busy myself with so many lists while preparing our beautiful site for another summer, is to make the turn towards Grace the primary step in my day-to-day plans. I look forward to spending a summer with all of you living into a promise that is "All About Grace."

Nick



Weeks Are Almost Full - Register Today

- | | |
|--------------------------------------|--------------------------------------|
| Junior High #1 Just 7 Left | Jr #2 Just 3 Left |
| Intro to Camp #2 Just 17 Left | Intro to Camp #3 Just 18 Left |
| Junior #1 Just 2 Left | JH Compass Points Just 7 Left |
| Senior High #2 63 Left | Junior/Jr High #3 82 Left |
| SH Compass Points Just 8 Left | |

Check www.rainbowtrail.org for up-to-date status of each week and register today!

Why I Give?



We are honored and humbled that Dave has asked us to write an article describing why we give to Rainbow Trail. Our family has been blessed to get to know Dave over the past five years during AdventFest, along with our sons' first camp experience this past summer. However, it's clear that Dave missed the fact that both Jeanne and I are engineers, which makes us woefully unqualified to author this guest column. With that disclaimer in mind, here's our story...

I believe Pastor Dan asked the group last year at AdventFest, "Where do you feel closest to God?" Without question for Jeanne and me, it has been the time spent with family, old friends, and new friends as we take time out of our busy lives to prepare for Christmas at AdventFest. We were not surprised to hear our boys, Dean (11) and Nathan (9), explaining how they also feel most connected with God in their own personal, special way anytime they are at Rainbow Trail. Last summer taught us all that, like many things in life, it's not the facility or address but the people and spirit that makes for special moments.

The entire Rainbow staff not only endured many challenges and stressful moments during the fires, but overcame them with the grace and love that makes this place so special to our family.

In our busy lives, it is an unbelievable gift for us to take time to be with God and the entire community at Rainbow Trail, away from all the distractions that life carries. It is a gift so special that we could never completely pay back what it means to us. When I think of this, it reminds me of Jesus' multiplication of the loaves of bread and fish. We come to Rainbow Trail with a small basket of bread and two fish, and in turn are blessed with an experience that nourishes us completely and endlessly even when we return home.

We give in our small way to show our tremendous gratitude and love for the gift of Rainbow Trail in our lives. May God continue to bless the entire Rainbow Trail family for being such an inspiration to us.

God's Peace,

Tim, Jeanne, Dean, and Nathan Maloney

Thank You Program Assistants



Rainbow Trail wishes to extend a huge thank-you to Emily Kuenker and Luke Hollander for all the energy and enthusiasm they have given to RTLCLC ministries over the past 9 months. Emily and Luke brought a wide variety of gifts, talents and experience to RTLCLC this retreat season. They shared exceptional hospitality and the love of Christ with retreat groups, and became an integral part of our staff team. We thank them for the blessing that they were to this place and wish them Godspeed. We hope to see them back at Rainbow Trail in the near future.

The Program Assistant position is a nine month internship program for those wanting to learn more about working in full-time outdoor ministry. Participants help in all areas of the retreat season including office work, retreat hosting, general maintenance, and program planning. They also go through training sessions to learn about the many facets of camp leadership and help them develop their own Outdoor Ministry philosophies. Rainbow Trail hires two Program Assistants each fall. If you, or someone you know, is interested in the position please contact Ben Larson at 719-942-4220 or ben@rainbowtrail.org.

Thank you Emily and Luke for your hard work and dedication; know that you will always have a home at Rainbow Trail. May God bless you on your future endeavors!

RTLCLC Fleet

In just the past summer, the Rainbow Trail summer staff put an astonishing 25,000 miles on our aging vehicle fleet! That is approximately equal to the entire



circumference of Earth! It seems like a big number but with Day Camp in congregations from Texas to Utah, weekly trips to airports for Bridging Borders staff, and shuttling Compass Points campers to trailheads all over the Sangre de Cristo range the miles add up quickly. Although we have been pretty dependent on minivans and other larger vehicles in the past, with the varied nature of our growing program, even smaller more versatile vehicles are a very feasible option for us now.

We have a continuous need for many kinds of vehicles and right now we

particularly need a good condition, economical vehicle we can use to send Bridging Borders staff to airports. With our current situation, we're often sending two staff to the Denver airport in a gas guzzling 15 passenger van. This

season as you're pondering spring cleaning and Easter-season celebrating, consider the huge gift that a vehicle donation to camp would be. The Saturn was donated by Randy and Lisa Scradler last summer and has been a huge asset to our fleet. A vehicle donation is a tremendous way to make a huge impact on the ministry of Rainbow Trail. If you have a vehicle that you are interested in donating to Rainbow Trail, or have any questions, please contact Nick at nick@rainbowtrail.org or 719-942-4220. Thank you! Our vibrant travel ministry depends on it!

Here they come...it's time to meet



Laura Harney
Counselor
Luther College
Rochester, MN



Leah Jarvis
Travel Director
Univ. of Central Florida
Canon City, CO



Mark Nassen
Counselor
South Dakota State Univ.
Sioux Falls, SD



Megan Gress
Counselor
Luther College
St Paul, MN



Rachel Marty
Counselor
Colorado State Univ.
Bettendorf, IA



Sawyer Halstead
Camphand
Cibola High School
Corrales, NM



Lauren Bender
Camphand
Valor Christian HS
Englewood, CO



Ryana Holt
Arts and Crafts
St Olaf
Colorado Springs, CO



Robbie Queen
Counselor
Pacific Lutheran Univ.
Evergreen, CO



Rose Martersteck
Counselor
Northeastern
Louisville, CO



Julia Hubbard
Compass Points Director
Gonazaga Univ
Colorado Springs, CO



Lee Kirberg
Counselor
Morrison, CO



Shannon Lavelle
Camphand
Fairview High School
Superior, CO



Matt Christensen
Counselor
Luther College
Luverne, CO



Ben Jarvis
Travel Director
Luther College
Canon City, CO



Erin Pierce
Assistant Cook
Canon City High School
Canon City, CO



Steph Smit
Counselor
Colorado State Univ
Monument, CO



Brett Mahon
Counselor
CO School of Mines
Colorado Springs, CO



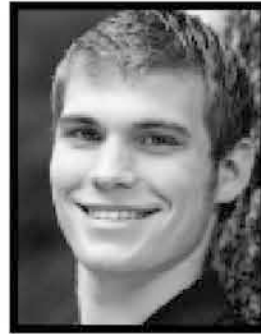
Brittany Mohler
Counselor
Univ of Wyoming
Broomfield, CO



Kelsey Kethan
Travel Director
Palm Beach Atlantic Univ
Fort Calhoun, NE



Matt Mielke
Camphand
Parker High School
Hartford, SD



Eric Schoer
Counselor
Luther College
Valparaiso, IN



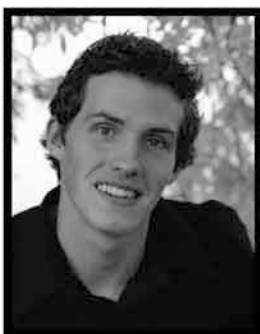
Prescott Delaware
Counselor
Fairview High School
Louisville, CO



Sarah Langler
Counselor
St Olaf College
Champlin, MN



Jessica Craver
Camphand
Pince Creek High School
Colorado Springs, CO



Mitch Helton
Counselor
Pacific Lutheran Univ
Colorado Springs, CO



Christopher Carlberg
Maintenance Assistant
Orange, CA



Emma Werling
Travel Director
Augustana College
Milbank, SD



Mel Pffor
Counselor
Baylor University
Colorado Springs, CO



Shawnee Smith
Counselor
Fisher College
Monument, CO



Colin Twaddell
Maintenance Assistant
Univ of Colorado
Lafayette, CO



Elie Cahill
Counselor
Gonazaga University
Vail, CO



Emily Wald
Counselor
Pacific Lutheran Univ.
Lakewood, WA



John Dwyer
Counselor
Marymount Hanhattan Co.
Park City, UT



Erin Twaddell
Camphand
Centaurus High School
Lafayette, CO



Jen Dunn
Ropes Course Coordinator
University of Mary
Bismarck, NE

The 2012 Rainbow Trail Summer Staff



Adrienne Ross
Travel Director
Pacific Lutheran Univ.
Colorado Springs, CO



Amy Kress
Office Assistant
Colorado State Univ
Colorado Springs, CO



Ben Warner
Counselor
Luther College
Green Bay, WI



Anneli Dudley
Counselor
Univ of Nebraska Lincoln
Worthington, MN



Anna Peasley
Counselor
Augustana College
Elkpoint, SD



Mark Nelsen
Guitar Instructor
Augustana College
Sioux Falls, SD



Austen Smith
Counselor
Luther College
North Liberty, IA



Kalie Saathoff
Camphand
Centennial High School
Pueblo, CO



Katie Menke
Travel Director
Univ of Minnesota
Hastings, MN



Chad Nelsen
Counselor
Wartburg, College
Rock Valley, IA



Christie Ritter
Counselor
Univeristy of Colorado
Conifer, CO



Clare Felletter
Stewardship Coordinator
Regis University
Grand Junction, CO



Cameron Toepfer
Counselor
Grand Canyon Univ.
Sierra Vista, AZ



Savannah Schneider
Counselor
Pacific Lutheran Univ.
Louisville, CO



Kaleb Sutherland
Compass Points Director
St Olaf College
Farmington, MO



Anndi Russell
Videographer
Luther College
Worthington, MN



Garrett Headman
Counselor
Dillon, CO



Karyn Saathoff
Camphand
Centennial High School
Pueblo, CO



Gustav Meyners
Counselor
Lenoir-Rein Univ
Clarksville, TN



Jordan Jensen
Counselor
Luther College
Clive, IA



Jordan Okes
Woodcarving Instructor
Cherry Creek High School
Centennial, CO



Aurice Worley
Bookkeeper
Canon City, CO



Nick Ehrhardt
Director of Site & Facilities
Cotopaxi, CO



Chris Seaman
Food Service Manager
Hillside, CO



Sara Cumbie
Executive Secretary
Canon City, CO



Ash McConnell
Director of Onsite &
Bridging Borders
Colorado Springs, CO



Ben Larson
Director of Compass
Points & Day Camp
Canon City, CO



Nellie Jarvis
Intro Camp Director
Canon City, CO



Dave Jarvis
Executive Director
Canon City, CO



2012 Camp Dogs
Berkley
Jangles
Roxy



pASHionate


By Ashley McConnell - Director of Onsite & Bridging Borders

To say the least, it has been a very exciting Spring. We have a phenomenal staff hired full of contagious energy that would get anyone pumped for an epic summer of ministry. There have been great groups up at camp over the past few months. Whether they have been kids, skiers, youth directors or college-age students helping out onsite they have all been wonderful to be around and have brought great joy to the staff. That being said, there are no signs of the excitement slowing down.

Currently I am sitting in St. Joseph's Hospital in Denver. Before ya get concerned we are waiting in the Labor and Delivery wing of the hospital waiting for my older sister to have her beautiful baby girl. This easily adds to the excitement this Spring has brought forth! Never a dull moment...

Dave and I recently went to Joplin to prepare for the groups that will be serving there this summer. What a wonderful experience. We met some great people and found it easy to fall in love with such a resilient community and city. We will be partnering with a tremendous organization, Project 195, while our groups are out there. It was inspiring for us to see the work that these wonderful people do. They are a completely volunteer run organization. Their Executive Director is a full time fireman in New York and runs this organization on the side. The contractor we worked with, Howard, is one of the kindest most generous people I have ever met. In a conversation I had with him he mentioned how there are probably things that he has the skill to do that would pay him a better salary but he get so much joy and fulfillment out of the work he does with Project 195 that he couldn't imagine doing anything else. Wow.

I feel myself filling with more and more excitement everyday. The staff will be here soon and the energy on site will be off the charts. Each of the Bridging Borders groups will have extraordinary experiences doing tremendous service whether they be in Ecuador or Joplin. There is no reason not to smile and let the eagerness fill you for the rest of the year. So many great things ahead, God is good.

God Bless, 



GIFTS IN MEMORY OF

Ann Smith by
Anonymous
Tim & Amy Kessler
Kevin & Catherine Lawrence

Aaron Grider by
Brittany Grider
Charlie & Linda Kelly
Robert Peters & Susan Kooman
Rick & Jill Reed

Ruth Smith by
Nancy Ballou & Dorothy Major
Carl & Katie Edstrom
King of Glory Lutheran Church,
Arvada
Betty Merrell
Rashelle & Howard Pearson
Gerald Smith
Sandra Vinnedge
Orville & Ann Werner

Wilma DeLong by
Christ the King Lutheran Church,
Denver

Jerry Nelson by
Holly & Nick Massie

Kathryn Strainer by
Ernie & Hazel Adolf
Bobbie Anderson
Michael & Susan Barnard
Marty Bendel Waite
Henry & Debbie Bruns
Darwin & Helen Dalzell
Dave & Nellie Jarvis
Alois & Betty June Keller
Jack & Dona Kenline
Rose Ann Starika
Aurice & Bob Worley
Mona Yellico

Shepherd of the Hills Beloved Church Ladies Bessie Miller, Dorothy Kramer, Kathryn Strainer, Darlene Remstad and MaryEllen Zander by
Jack & Phyllis Brown

Daniel Ray Benson by
Virginia & Tom Crow

Wally & Darlene Remstad by
Stacy Coulson

Ray Short by
Jean Short

GIFTS IN HONOR OF

Gregg & Karen Hartmann & Family by
Gladys Hartmann
Robert & Virginia Froehlich

Shepherd of the Hills Lutheran Church, Canon City Council by
Roger & Linda Coffey

Carl & Katie Edstrom by
Paul & Kathy Edstrom

Hanna Nichols & Alvin Nordell's by
Bob & Joyce Witte

LEELAND AND ELLEN SOKER ANNUAL CAMPSHIP FUND

Herbert & Myra Bagenstos
Bethany Lutd Foundation,
Cherry Hills Village
Karen & Scott Klein
Don & June Simonton
Jo Ann Soker

PATHFINDERS

The following individuals are members of the 2012 Pathfinders' Club. Pathfinders is RTLCL's next level giving club that keeps the ministry at Rainbow Trail growing and expanding. These individuals have given \$1,000 or more to this great ministry. To join, contact Dave Jarvis 719-276-5233 or find out more and donate online at www.rainbowtrail.org/donate. Many thanks to the following supporters of Rainbow Trail!

Challenger Peak

\$1,000-1,499

Bruce & Nancy Albertson
Rosetta Bidne
Dave & Carissa Cruson
Jay Davis
Darren & Amy DeYoung
Katharine Dugan
Kim & Paul Eggen
Dave & Ruth Ericson
Chris & Stephanie Frankle
Karl & Wendy Gustafson
Fred Hansen
Bob & Lori Harrison
William & Sara Hollander
Keith & Jean Hovland
Betty Kirsebom
Marcus Kochis
Steve & Cheryl Mahon
Jeanne Maloney
John & Pam Marietta
Hunter & Janet McDaniel
Brent & Dawn Meyer
Mark & Kim Meyer
Scott & Julie Miller
Chuck & Gayle Newell
Rick & Judy Oakes
Gary & Beverly Oppedahl
Marvin & Nadya Plugge
Calvin & Cathy Pyle
Rick & Jill Reed
Walter Roberts
Andrew & Annette Roinestad
Hanne & Kip Schauer
Don & June Simonton
Karen Smith
Mike & Julie Speck

Corey & Jeanette Stull
Vernon & Sonja Thorwald
Gary & Marilyn Titus
Craig & Kathy Twaddell
Ruth Von Mosch
Marsha Yosten

Long's Peak

\$1,500-2,499

Philip & Cecily Abel
Mark Burris
Jan & Rives Duncan
Kurt & Marsha Ehrhardt
Bob & Ann Erickson
Richard Gash
Tom & Sharil Gould
David & Caroline Hoffman
Ken & Sheryl Mielke
Jim & Janice Mulvany
Tim & Holly Nelson
Brenda & Lon Sears
Edna Webster

Mt. Elbert

\$2,500-\$4,999

Les Anderson
Ron & Olga Augustson
Kevin & Sue Bethke
Tom & Allison Bucket
Michael & Connie Burris
Bob & Margie Dugan
Fred & Janice Ehlers
Ann Hultquist & Roger Loots
Dave & Nellie Jarvis
Randy & Lisa Schrader
Rick Smith

Mt. Princeton

\$5,000-\$9,999

Todd & Mary McNeil
Chuck & Michelle Nichols
David & Edie May Phillips

Crestone Peak

\$10,000-14,999

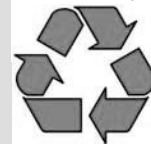
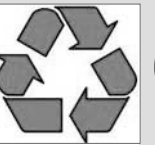
Kit & LeEtta Choi
Bob & Michelle Szydlowski
Susan Williams
Jim & Virginia Winkelman
Bob & Joyce Witte

ANN (JARVIS) SMITH MEMORIAL LAND EXCHANGE FUND

Anonymous
Barbara Barrett
Virginia Crow
Evergreen Lutheran Church
Vince & Leigh Felletter
James & Mary Garrelts
Dave & Nellie Jarvis
King of Glory Christ Cares Small Group
Janet & Troy Meissner
Mo & Marcia Oppermann
Corey & Jeanette Stull

Go Green

Rainbow Reflections is available in a paperless version! By opting to receive it in an electronic form you will help us save printing and postage costs, save paper, and reduce waste. You will also get Rainbow Reflections with color photos and live links to information about RTLCL programs and events. If you want to receive the newsletter via e-mail contact Sara at info@rainbowtrail.org and let us know that you would like to "Go Green." Don't want to give up the paper but like the idea of color pictures and a copy of the newsletter letter delivered to your inbox? E-mail "Get Both" to info@rainbowtrail.org. Be sure to include your full name and the e-mail address(es) that you would like to receive it at.



Get Color

DESIGNATED GIFTS

Dennis Bagenstos & Judy Leiseth
Larry & Eleanor Bonicelli
Jesse Crock
Janet Egan
Sharon Heldt
James & Candy Hersch
John & Valerie Hess
JD & Kristen Kessler
Van & Sandy Kistler
Bert & Dolly Lager

Jon & Karen Morgenthaler
Kirk & Trish Neubauer
Mo & Marcia Oppermann
Noel Reagan
Gayle Rodgers
Kevin & Darlene Rohrbaugh
Jim & Pat Speckmann
Amber Turner
Gwynne Wilson
Marsha Yosten

GIFTS IN KIND

Miles & Kim Brown
Vince & Leigh Felletter
John & Toni Hansen
Anne-Marie Patrie & John Schneider

Jan Richardson
Dena Richter
Kevin & Cheryl Schenk
Wayne Spight

Want To Make A Difference?

Give a gift to Rainbow Trail and invest in the faith lives of thousands of kids. In today's economy there is no better return!

Donate

Online Anytime

www.rainbowtrail.org/donate

TRAILBLAZERS

The following individuals are members of the 2012 Trailblazers Club. Trailblazers is an annual giving club that keeps the ministry at Rainbow Trail alive and growing. To join, contact Dave 719-276-5233 or check out the "Support Us" portion of our webpage at www.rainbowtrail.org. Many thanks to the following supporters of Rainbow Trail!

Eagle Peak Club \$500-\$999

Anonymous
 Roger & Alice Aden
 Mickey & Cindy Bannister
 Leon & Linda Bauman
 Scott & Kristi Beebe
 Miles & Kim Brown
 Clint & Martha Calvert
 Jeff & Trisha Carlson
 Emily & Scott Dalen
 Phil & Traci Dorth
 Jim & Joanne Dumler
 Vince & Leigh Felletter
 Dale & Margaret Fetchenhier
 Dennis & Lynn Gimlin
 Kurt & Mary Haeger
 John & Peggy Harris
 David & Linda Higbea
 Koren Holden & Randall Toney
 Tom & Katherine Kaley
 Don & Jill Kreger
 John & Dinah Kress
 Mavis Kyllonen & Karen Swanhorst
 Jennifer Lambertus
 Ben Larson & Beth Titus
 Randy & Phyllis Lynn
 Michael Meyer & Enette
 Larson-Meyer
 Delores & Gerald Mueller
 Arthur Norman
 Karen Nulle
 Dave & Michelle Okes
 Mo & Marcia Oppermann
 Jon & Kate Palmquist
 Jim & Shirley Pettigrew
 Jim & Carol Reppert
 Willie & Julie Reusser
 Dave & Betsy Risendal
 Carl Sauey
 Rod & Sharie Schofield
 Steven & Anita Seagraves
 Newton & Ann Seitzinger
 Peg & Dave Slagle
 Ben Spiger & Kendra Wilde
 Laura Springhetti & Siam
 Oottamasathien
 Keith & Doris Stokes
 Bob & Michelle Thomsen
 Westcliffe Market
 Erik & Kim Williams
 Tom Williamsen
 Lester & Marianne Woodward

Rainbow Lake Club \$250-\$499

Anonymous
 Roger & Alice Aden
 Mickey & Cindy Bannister
 Leon & Linda Bauman
 Scott & Kristi Beebe
 Miles & Kim Brown
 Clint & Martha Calvert
 Jeff & Trisha Carlson
 Emily & Scott Dalen
 Phil & Traci Dorth
 Jim & Joanne Dumler
 Vince & Leigh Felletter
 Dale & Margaret Fetchenhier
 Dennis & Lynn Gimlin
 Kurt & Mary Haeger
 John & Peggy Harris
 David & Linda Higbea
 Koren Holden & Randall Toney
 Tom & Katherine Kaley
 Don & Jill Kreger
 John & Dinah Kress
 Mavis Kyllonen & Karen Swanhorst
 Jennifer Lambertus
 Ben Larson & Beth Titus
 Randy & Phyllis Lynn
 Michael Meyer & Enette
 Larson-Meyer
 Delores & Gerald Mueller
 Arthur Norman
 Karen Nulle
 Dave & Michelle Okes
 Mo & Marcia Oppermann
 Jon & Kate Palmquist
 Jim & Shirley Pettigrew
 Jim & Carol Reppert
 Willie & Julie Reusser
 Dave & Betsy Risendal
 Carl Sauey
 Rod & Sharie Schofield
 Steven & Anita Seagraves
 Newton & Ann Seitzinger
 Peg & Dave Slagle
 Ben Spiger & Kendra Wilde

Laura Springhetti & Siam
 Oottamasathien
 Keith & Doris Stokes
 Bob & Michelle Thomsen
 Westcliffe Market
 Erik & Kim Williams
 Tom Williamsen
 Lester & Marianne Woodward

Base Camp \$120-\$249

Margaret & Norm Aarestad
 Edna Anderson
 Marlys Bernhard
 Gary & Patty Bliss
 Liza & Nathan Blom
 Larry & Eleanor Bonicelli
 Ramona Bouzard
 Walter Bouzard
 Pauline Brodbeck
 Martin & Nancy Brown
 Phyllis & Jack Brown
 Mardella Buhr
 Jim & Deb Carson
 Addison Choi
 Lisa & Matt Christian
 Rebecca & Rich Collins
 Mark & Terri Cooper
 Sharon Cox
 Mark & Pegi Crates
 Jim & Jann Marie Crock
 Jean & Larry Danielson
 Kayla Dobson
 Russ & Pat Edwards
 Kris Ericson
 Scott & Sue Fernau
 Jav Fischer
 Don & Ginny Fisher
 Marcia Frensley
 Joel & Gloria Friesenegger
 Ron & Heather Frost
 Mark & Margo Gasta
 Tim & Cindy Goyette
 Eric & Carolyn Gustafson
 Steve Gustafson & Beth
 Knuston-Gustafson
 Jeff & Mary Haeffele
 Scott & Susan Harman
 Scott & Janet Harrison
 Greg & Barbara Haschke
 Joy Hawkins & Randall Clark
 Nancy Henning
 Stacy & Erik Hjelmstad
 Edson & Mary Holland
 Paul & Lynne Horpedahl
 Gail & Rod Hubbard
 Marlin & Mary Jahnke
 Stanley & Evelyn John
 Dennis Johnson
 Lucille Johnson
 Stan & Sandy Johnson
 Steve & Linda Jurens
 Sue Keasling
 Megan Keating
 Craig Kelly
 Jeff Kelty
 Sandy & Van Kistler
 Heather Kistler
 Oliver Korte
 Art & Michelle Kraus
 David & Rosemarie Kumpe
 Severt & Mary Kvamme
 Jean Larson
 Kyle Larson
 Mike & Kristin Lavelle
 Barbara & Nils Lindroth
 Marlise Lonn
 Steve & Nancy Lord
 Dale & Mary Ann Louis
 David & Michelle Louis
 Gail & Kay Luttimen
 Dennis & Karen Martinson
 Tim & Lori Matson
 Jeffrey Meador
 Walter & Karyl Meyer
 Adrian & Andrew Miller
 Joyce Mills
 Gail Muehlethaler
 Jim & Judy Myra
 Eric & Kirsten Nelson
 Patti Nelson
 Sigurd & Dianne Nelson
 Richard & Penny Newman
 John & Jenifer Oien
 Clark & Sara Olson-Smith
 Terry & Susan Pletkovich
 Josh & Alissa Plumley

Joe & Donna Richardson
 Mark & Michele Robinson
 Kevin & Darlene Rohrbaugh
 Elden Ronnekamp
 Holly Samuelson
 Gary & Malee Schoon
 Carl & Gail Schurman
 Brad & Brooke Shannon
 Jim & Bonnie Shumaker
 JoAnn Soker
 Kirstine Stjernholm
 Mark & Natalie Talley
 Wayne & Marion Talley
 La'Arnie & Bert Tise
 Scott Treider & Carol Serrano-
 Treider
 Amber Turner
 Bea Varney
 Clarence & Marlyn Ver Sluys
 Larry & Catherine Wacker
 Helen Wagner
 Tim & Jen Walmer
 Greg & Deb Watson
 Roberta Wentworth
 Karen Witt & James Puga
 Terry & Holly Wubbena
 Betty & Ron Yergert
 Gene & Angie Youngmann

Ben There...

By Ben Larson - Director of Compass Points & Day Camp

It's been a dry winter in much of Colorado, including at RTLC. Not so great for the first ski season that I got a season pass (although I did manage to squeeze in a good number of days on the slopes). But it definitely had its advantages for getting a good start on cleaning up from last November's wind storms, and taking a look at what's ahead for our high ropes course. We had groups of college students from St Olaf College (MN) and University Lutheran Church (OK) who spent their Spring Break with us; hauling, chipping, splitting, and stacking trees. They worked incredibly hard and by the end of the week the ropes course had a much different look and I could start to see possibilities for something new. I've been working with ropes courses for almost twenty years and as I started exploring design options for a new course, I was amazed by the wide variety of courses that are being built now. The course design that we're working on, will keep the focus of a circuit, where you start up on one end, and "zip" down on the other. However, we'll add the possibility for multiple people to participate side by side. Now you will be able to more than cheer on friends from the ground, you'll be able to reach out a hand and work through the challenge right next to each other.



Spring has come early to the mountains this year and it's gotten me excited to hit the trail again. We have some great groups coming out for Compass Points, and we are introducing a new program called "Into The Wild." This new Compass Points trip is for those who are graduating high school this spring and getting ready to head off to college. It's one more chance to come back to RTLC as a camper, and an opportunity to have great conversation about how to leap into college and make it a great experience. Two awesome guides will lead conversation and the week of backpacking and rafting. If you're a Senior this year, I hope you'll join us!

Ben ...Done That

ORGANIZATIONAL GIFTS

Adams County Chapter Thrivent Financial for Lutherans
 California Pizza Kitchen
 Collegiate Peaks Chapter Thrivent Financial for Lutherans
 Denver County Chapter Thrivent Financial for Lutherans
 Douglas County Chapter Thrivent Financial for Lutherans
 Fremont-Custer County Thrivent Financial for Lutherans
 Garden of the Gods Chapter Thrivent Financial for Lutherans
 Gateway Thrivent Financial for Lutherans
 Mesa County Chapter Thrivent Financial for Lutherans
 Metro Plains Chapter Thrivent Financial for Lutherans
 North Jeffco Chapter Thrivent Financial for Lutheran
 Pikes Peak Chapter Thrivent Financial for Lutherans
 Regional Thrivent Financial for Lutherans
 Sangre de Cristo Thrivent Financial for Lutherans
 Southeast Metro Thrivent Financial for Lutherans
 South Jeffco Thrivent Financial for Lutherans
 Twin Peaks Chapter Thrivent Financial for Lutherans

PARTNER CONGREGATIONS

These congregations have committed to partnering with Rainbow Trail by supporting the ministry through their congregation's budget.

Abiding Hope Luth, Littleton	Faith Community Outreach, Longmont	Mount Calvary Luth, Boulder
All Saints Luth, Austin, CO	Faith Luth, Security	Mount of the Holy Cross, Vail
All Saints Luther Women, Austin, CO	First Luth, Co Springs	Nativity Luth, Commerce City
Amazing Grace Luth, Littleton	First Luth, Longmont	Our Father Luth, Centennial
American Luth, Grand Junction	Good Shepherd Luth, Glenwood Springs	Our Savior Luth, Greeley
Ascension Luth, Colorado Springs	Good Shepherd Luth, Denver	Our Saviour's Lut, Ft. Collins
Ascension Luth Women, Co Springs	Grace Luth, Boulder	Peace Luth, Las Cruces, NM
Atonement Luth, Boulder	Grace Luth, Co Springs	Prince of Peace Luth, Co Springs
Atonement Luth, Lakewood	Grace Luth Women of the ELCA, Co Springs	Prince of Peace Luth, Denver
Augustana Luth, Denver	Holy Cross Luth, Wheat Ridge	Rocky Mountain Synod
Bethany Luth, Cherry Hills Village	Holy Ghost Luth, Fredericksburg, TX	Shepherd of the Hills Luth, Canon City
Bethany Luth Foundation, Cherry Hills Village	Holy Love Luth, Aurora	Shepherd of the Valley Luth, La Salle
Bethel Luth, Colorado Springs	Holy Shepherd Luth, Lakewood	Spirit of the Mountain Luth, Golden
Bethlehem Luth, Los Alamos	Holy Trinity Luth, Littleton	South Zumbro Luth, Kasson, MN
Black Forest Luth, Co Springs	Holy Trinity Luth Women of the ELCA, Littleton	St. Andrew Luth, Arvada
Centennial Luth, Englewood	King of Glory Luth, Arvada	St. Luke Luth, Albuquerque
Christ Evangelical Luth, Sante Fe, NM	King of Kings Luth, Pueblo	St. Paul Luth, Albuquerque
Christ the King Luth, Denver	Lord of the Hills Luth, Centennial	St. Peter Luth, Greenwood Village
Christ the King Luth, Durango	Lord of the Mountains Luth, Dillon	St. Philip Luth, Littleton
Christ the Savior, Aurora	Luth Church of Hope, Broomfield	Tabor Luth, Pueblo
Christ the Servant, Louisville	Luth Church of the Holy Spirit, Centennial	Trinity Evangelical Luth, Boulder
Community of Joy Luth, Rio Ranch, NM	Luth Church of the Master, Lakewood	Trinity Luth, Fowler
Cross of Christ Luth, Broomfield	Luth Church of the Servant, Santa Fe	Trinity Luth, Loveland
Cross of Glory Luth, Denver	Messiah Luth Church, Denver	Trinity Lutheran Church, Monument
Cross of Hope Luth, Albuquerque, NM	Mission Luth Church, Swink	
Elim Luth, Odgen, UT		
Evergreen Luth, Evergreen		



Rainbow Trail
LUTHERAN CAMP

2012 Events Calendar

- May 25-28.....Memorial Day Work Weekend
- June 10- August 18.....Summer Camps
- August 31 - September 3.....Labor Day Family Retreat
- September 6 - 9.....Women's Adventure Camp
- September 13 - 16.....Men's Fly Fishing Retreat
- October 7.....Grace Race 5k (Denver)
- October 12-14.....Fall Ambassadors Retreat
- November 9-11.....Fall Confirmation Retreat
- November 30-Dec. 2.....AdventFest
- February????.....Senior High Recharge Week-end



CONTRIBUTORS

Thank you to the following friends of Rainbow Trail who gave a gift in 2012.

- | | | | |
|----------------------------------|-------------------------------|--------------------------------|-------------------------------|
| Debra Alderson | John & Cathy Goodman | Mackeprang | Jim & Mary Ruden |
| Carl & Linda Almquist | Bill & Sharon Gorman | Kurt & Darlene Mader | Rosie & Dean Ruonavar |
| Kevin Althoff & Sandy Wittebort | Steve & Lewanne Graeber | Judy Marsh | Becca Sager |
| Dawn & Shannon Ambrosio | Beth Graham | Lawrence & Janet Matschull | Kent & Barbara Sather |
| Angela Andrews | Mark & Kim green | Ashley McConnell | Mark & Diane Sather |
| Scott & Karin Arndt | John & Shari Gunther | Mary McCulley | Allen Schauer |
| Gary & Marva Baldwin | Mark Hahn | Don & Rose McFall | Gwen Schiller |
| Kevin & Marybeth Barkocy | Steven & Pamela Haigh | Mary Anne McKenzie | Patti Schoenfeld |
| Deborah Bayles | Daniel Hanson | Marilyn & David Meline | Jon Schoer & Deb Fedge |
| Melissa Beaman | Landon Harman | Derek Menke | Kathy & Mike Schreiber |
| Dave & Betty Begeal | Ray & Carrie Harney | Marilyn Mernitz | Paul & Karla Schritter |
| Jan & Richard Bell | Bret Harper | Betty Merrell | Karen Schuette |
| Marty Bendel Waite | Daniel Harrison | Janet & Ernie Miller | Roger & Margaret Schutte |
| Ann Bengtson | Karen & Gregg Hartmann | Jerry & Diane Miller | Schutte |
| Karen Benuska | Karel & Tom Hemler | Jean Miller | Todd Schutte |
| Lisa Boe-Sims | Mark & Nancy Hendrickson | Kyle & Dawn Miller | Lisa & Zant Scott |
| Dan & Marcia Bollman | James & Candy Hersch | Gary & Gwynethe Miller | Hazel Shaner |
| Donna Bowles | Cindy & Joe Hess | Douglas Minter | Christy Shelinbarger |
| Cristen Brandt | John & Valerie Hess | Alma Mischke | Ray & Jean Short |
| Bernette Brandt | Paul & Elaine Hill | William & Bonnie Mohler | Robert & Barbara Sieckman |
| Daniel & Diana Breed | Susan Hill | Scott Moore | Joel & Barbara Sigdestad |
| Steve & Terrie Briley | Eric Hoffer | Nick & Kristine Moucha | Cliff & Teak Simonton |
| David Brock & Ann Graham Brock | Katherine & Derek Hogue | Randy & Gail Mundt | Kandisa Skaff |
| Jerry & Joan Brown | Luke Hollander | Karlene Murphy | Antje Sliger |
| Miles & Kim Brown | Gerald Hollander | Sarah & Mike Murphy | Larry & Elaine Sohrweid |
| Kip & Pam Bryan | Pat & Charles Holte | Johanna Nichols | Lindsay Smith |
| Roy Burger | Victor & Lois Hoops | Geoffrey & Paula Nichols | Paul & Lisa Smith |
| Amy Burke | Julia Hubbard | Brian Niess & Anne Bliss | Jessica Smoot |
| Daniel Burris | Joan & Chris Huke | Niess | Larry & Elaine Sohrweid |
| Cynthia Buschagen | Ruth Idler | Ed & Janice Norden | Jim & Pat Speckamnn |
| Robert & Carolyn Bye | Kitty Jarvis | Dion Obermeyer | Michael & Carrie Stadtmueller |
| Brian & Candace Cadena | Stephanie Jebson | Janet Okerman | Bob & Dorthea Steinke |
| Jeanell Carlson-Bjorkman | Dwight & Debbie Jerde | Paul Olsen | Robert & Rhoda Stenson |
| Robert & Ladonna Chalstrom | LaDonna Jurgesen | Orvid & Lois Olson | Harold & Susan Stitt |
| Nancy Colia | Jim & Carol Kaliamos | Joseph Ortner & Barbara Gallea | Kylie Stitt |
| Margaret Collins | Ryan & Anne Marie Kaspersen | Christine Pacheco | Lloyd & Dorothy Stivers |
| Melanie Coulson & Graham Johnson | Conrad & Kathy Kawulok | Vicki & Stacy Padilla | Mark & Julie Stover |
| Craig & Lynda Cox | Wendy Kellond | Cindy & Nathan Park | Jed & Allison Summerton |
| Krista & Jonathan Craft | Keith & Becky Kempke | Mary & Andrew Parker | Gaylene Szaltzer |
| Lynne & Joseph Craver | Neville & Phyllis Kempke | Andrea Patella | Brian & Carol Thomas |
| Johanna Crock | Colette Kerlin | Margaret Patton | Alan & Kathleen Thompson |
| Jeanne & Martin Dallman | Kittie Kerr | Harold & Cheryl Peacock | Katherine Tjeerdsman |
| Linda & Stephen Daniel | Bob & Joni Kippley | Sara Pearson | Kathryn Trendera |
| Jack & Kathy Dechant | Dave Kirberg | Kevin & Denev Perkins | Jim & Lisa Tuller |
| David & Catherine Dehn | W.K & Diana Kirk | Dave & Judy Peters | Andrew Tully |
| Verna Drennan | Ray & May Lou Koch | Lindsey Petersen | Randall & Dee Urdahl |
| Frances Dunbar | Chad & Aleshia Kohlmeier | Mari Peterson | Steven & Andrea Vahl |
| Kendra & Steve Dunn | Don & Mary Koppenhaver | Ruth Peterson | Judy & Dave Van Auken |
| Kathy Eaton | Ken & Donnell Lambertus | Ed & Karen Pforr | Lois Vitcenda |
| William Eldridge | Heather Land | Carol Picco | Wally Vives |
| Swan Ellert | Roger & Claudia Larson | Paul & Donna Picou | Larry & Jane Von Thun |
| Harry Faber | Kim Law | Dean Pieper | Wendelyn Walberg |
| Tom & Pat Fedde | Kevin & Catherine Lawrence | Jana & Matt Porta | Michel & Annette Ward |
| Peter & Emily Feig | Gregory & Gladeane Lefferdink | Jon & Jo Powers | Kira Ward |
| Mark Feigal | Steve & Nancy Lord | Julie Prange | Barbara Ward |
| Bruce Feldkamp | Theresa & Dan Lubben | John & Laura Prater | Susan Watkins |
| Clare Felletter | Leah Lucas | Elizabeth & Louis Puls | Ashley Wilking |
| Mark & Sarah Fincham | Carol & Dan Ludwig | Roy & Tami Rash | Ken & Paula Wills |
| Tod & Sudee Floyd | Carol Luzovich | Bob & Janet Reither | Sara Witte |
| Art & Lori Gaide | Waverly Machamer | Pat & Julie Rethman | Phil & Marcia Wolfe |
| Mark & Nancy Galloway | Matt & Michelle | Anastasia Reynolds | Laura Wouters |
| Karan Goldsberry | | Rhonda Rhodes | Todd & Christine Wright |
| | | Dena Richter | Nathan Wubbena |
| | | Ben & Kirsten Roeber | Einar & Lone Wulfsberg |
| | | Rick & Becky Romano | Ben & Corliss Wyatt |
| | | Adrienne Ross | Deborah & Gerald Yirku |
| | | David & Susan Ross | Marty Youngmann |
| | | David & Linda Ross | Sue & Roger Zen |
| | | Ben Rude | Lori & Neil Zimmerman |

A different, yet significant way to support the ministries of Rainbow Trail.

Needs List



These are essential items needed for our day-to-day operations. A designated monetary gift would certainly be welcome as well. You can bring these items with you any time you come to camp or call us to arrange a drop-off or pick-up. Thank you for your continued support!

- White 20# copy paper (laser quality)
- Reams of colored copy paper
- Avery 5160 & 5164 labels
- Masking tape
- Adobe Creative Suite 4 (Mac)
- Sharpie brand permanent markers
- Scotch tape
- Duct tape
- Postage stamps
- UPS surge protector power strips
- Packs medium black or blue pens
- Long barreled fire lighters
- 9x12 manila envelopes (no clasps)
- Flip chart pads
- 6x9 manila envelopes (no clasps)
- Boxes of 1/3 cut file folders
- 5 ft. round white "Lifetime" tables
- Computer battery back-up system
- 4 drawer file cabinet
- 6 or 8 ft. rect white "Lifetime" tables
- A "new" economic "commuter" car
- Extension cords (all lengths)

Wish List

These are larger items that we haven't budgeted for, but would love to have. Contact us if you would like to donate any of these items, new or gently used. You can bring them to camp, or call to arrange a drop-off or pick-up. Thank you for your continued support.



- New sound system (call us first)
- Free standing space heaters
- 50-yard intercom system
- Cotton work gloves
- Industrial mop buckets (call us first)
- 6 ft. Rectangular Tables
- Jump drives/thumb drives
- Mac desktop computers
- New PC desktop computer (call us)
- New full sheets - white
- New full or single mattress pads
- New queen sheets - white
- New queen mattress pads
- New 3-piece towel sets
- 10 gal Rubbermaid bins for kitchen
- New LCD projectors
- Digital camera (min 8 megapixel)
- Costumes for Life of Christ
- 5 gallon shop vacs
- Upright vacs
- New high chairs
- Pack-n-play Cribs
- 32" Digital flat screen TV's
- DVD players with remotes
- Gator 6 wheeled vehicle
- 20 ft. or longer extension cords
- New gas grills
- Motorola 2-way radios
- Paper Shredder
- 100 foot cloth measuring tape
- Bobcat Pallet Forks & Toothed Bucket
- "Flat proof" foam filled Bobcat Tires
- "New" Quality Socket/Wrench Set
- Airless Paint Sprayer

Administrative Office

107 S. 9th Street, Suite B
Canon City, CO 81212
Phone: 719-276-5233
Fax: 719-276-5235
Office Hours: 9 am - 5 pm



Camp Office

P.O. Box T
3056 County Road 198
Hillside, CO 81232
Phone: 719-942-4220
Fax: 719-942-4000

Full-Time Staff

- Dave Jarvis, Executive Director.....dave@rainbowtrail.org
- Sara Cumbie, Executive Secretary.....info@rainbowtrail.org
- Aurice Worley, Bookkeeper.....accounting@rainbowtrail.org
- Ben Larson, Dir of Compass Points & Day Camp.....ben@rainbowtrail.org
- Ash McConnell, Dir of Onsite & Bridging Borders.....ash@rainbowtrail.org
- Nick Ehrhardt, Dir of Site & Facilities.....nick@rainbowtrail.org
- Chris Seaman, Food Service Manager.....chris@rainbowtrail.org

Board of Directors

- President.....Michelle Okes, Bethany Lutheran, Denver, CO
- Vice Pres...Rev. Vera Guebert-Steward, Evergreen Lutheran, Evergreen, CO
- Secretary.....Scott Skrine, King of Glory Lutheran, Arvada, CO
- Treasurer.....Karen Nulle, First Lutheran, Gypsum, CO
-Rev. Jeff Carlson, Good Shepherd Luth, Glenwood Spgs, CO
-Kathy Twadell, Atonement Lutheran, Boulder, CO
-Chris Lieber, First Lutheran, Colorado Springs, CO
-Josh Nelson, Holy Trinity, Littleton, CO

www.rainbowtrail.org

We make every effort to list each donor, but mistakes do happen. If we have inadvertently omitted your name or listed you incorrectly we apologize. Please call us, 719-276-5233, and let us know so that we can make corrections.